

NIFTY FUT : IMMEDIATE RESISTANCE AT 9970



Source: Falcon, BP Equities Research

Nifty futures closed lower by 0.36% at 9916. Index has formed bearish engulfing candlestick which suggests the recent peak to act as strong resistance. Index has given breakout from a small triangle but is failing to sustain above the upper trend line. Index earlier had reversed after taking support at lower trend line of the broadening wedge wedge this trend line is expected to act as strong support for short term trend. Going ahead index has immediate resistance at 9950-10000, for index to see continuation of previous up move it needs to surpass this range while support comes at 9860-9820.

Intraday Nifty Future Resistance—9970/10020/10070 Support—9920/9880/9840

BANK NIFTY FUT : IMMEDIATE RESISTANCE AT 24400



Source: Falcon, BP Equities Research

Bank Nifty futures closed 0.20% lower at 24279. Index has formed bearish engulfing candlestick which suggests the recent peak to act as strong resistance. Index is failing to sustain above the upper trend line of the small triangle. Going ahead index has immediate support at 24300, a sustenance below this level will continue down move towards 24150-24000 while resistance comes at 24400.

Intraday Bank Nifty Future Resistance—24400/24450/24550 Support—24150/24000/23900

Technical Trend

INTRADAY TRADER'S PICKS

Sr.No.	STOCK	CLOSE	S1	S2	S3	R1	R2	R3	RECOMMENDATION
1	EKC	39.3	38.7	38.1	37.6	40.3	41	41.5	BUY ABOVE 39.5
2	GSPL	189.55	187	184	181	193	196	199	BUY ABOVE 190
3	HUDCO	87.1	86.3	85.1	84.1	88.7	90	91	BUY ABOVE 87.5
4	M&MFIN	446.6	442	436	430	454	460	466	BUY ABOVE 448
5	UJJIVAN	374.30	369	365	361	381	385	389	BUY ABOVE 375

Technical Trend

DERIVATIVES

INDICES SNAPSHOT

SCRIPS	CP AS ON 05/09/2017	CP AS ON 06/09/2017	Change (%)	OI AS ON 05/08/2017	OI AS ON 06/09/2017	Change (%)
BANKNIFTY	24388.1	24306.75	-0.33	1923480	1839200	-4.38
NIFTY	9971.6	9935.35	-0.36	18799200	19654275	4.55
NIFTYIT	10511	10443	-0.65	30850	31600	2.43

Derivative Highlights

- ⇒ Nifty Future closed with a premium of 19 points.
- ⇒ Nifty Future Open Interest increased by 4.55%. BankNifty Future Open Interest decreased by 4.38%.
- ⇒ Nifty PCR - OI decreased from 1.35 to 1.33, Nifty PCR - Vol decreased to 1.12 to 1.07
- ⇒ FII Sold Rs 1353.02 crore while DII Bought Rs. 51.57 crore in the Cash Segment. FII Bought Rs. 762.79 crore in Index Futures and Bought Rs. 1345.81 crore in index options, while in Future they Bought Rs. 507.24 crore and Bought Rs 6.33 crore in stock options
- ⇒ Among Index Option space, Highest Open Interest concentration was seen in 9700 & 9800 Strike price among the PE options. Where as among CE Options Highest Open Interest Concentration was seen in 10000 & 10100 Strike price.
- ⇒ Highest Open Interest Build Up among the PE options was seen in 9800 & 9600 Strike price. Among CE options highest build up was seen in 9950 & 9900 Strike price.

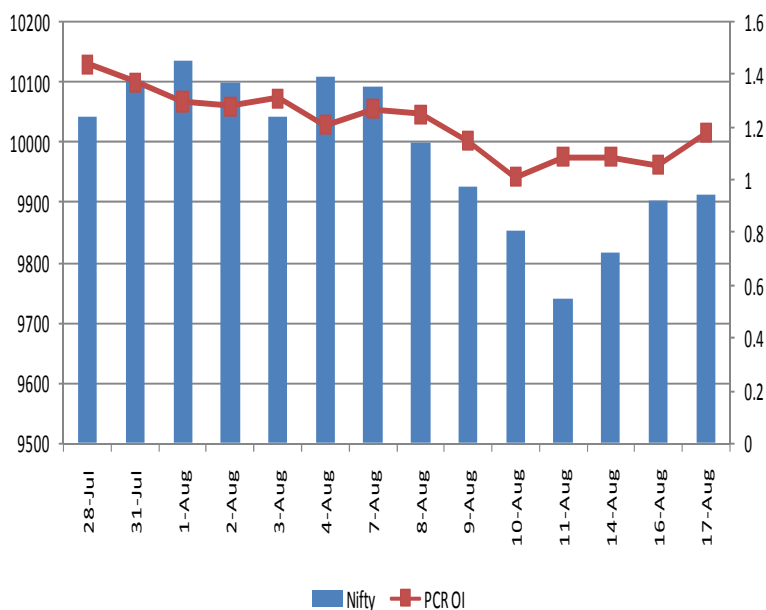
OI Concentration

PUT OPTION		CALL OPTION	
Strike Price	Open Interest	Strike Price	Open Interest
9700	4683975	10000	4327800
9800	4293825	10100	3262125
9900	3827250	10200	2975100
9600	3620550	10500	2387325
9500	3473250	9900	2323950

Highest Change in OI

PUT OPTION		CALL OPTION	
Strike Price	Change in OI	Strike Price	Change in OI
9800	410100	9950	249975
9600	185925	9900	202875
9200	102450	10100	197400
9850	80700	10500	160425
9700	49200	10000	154650

Nifty Future Price V/S PCR-OI



Technical Trend

Stock Analysis

Long Build-up	Long Unwinding	Short Build-up	Short Covering
BAJAJFINSV	AJANTPHARM	AXISBANK	EXIDEIND
CAPF	DRREDDY	BOSCHLTD	JINDALSTEL
EQUITAS	INDUSINDBK	GODREJCP	JUBLFOOD
GODREJIND	NATIONALUM	HDFCBANK	MARICO
JUSTDIAL		ITC	MOTHERSUMI
MUTHOOTFIN		LICHSGFIN	MRF

STATISTICS

Highest Premium

SCRIPS	Premium %	Price change %
JPASSOCIAT	0.85	-1.5
IDBI	0.73	-1.3
EQUITAS	0.70	3.7
PVR	0.69	0.3
GODREJIND	0.68	0.3

Highest Discount

SCRIPS	Premium %	Price change %
PTC	-2.14	0.4
NIITTECH	-2.09	-0.5
RELINFRA	-1.40	0.2
OIL	-1.28	0.2
POWERGRID	-1.10	-0.9

TOP 5 VOLUME GAINER FOR THE SESSION

SCRIPS	CP AS ON 05/09/2017	CP AS ON 06/09/2017	Change (%)	Vol AS ON 05/08/2017	Vol AS ON 06/09/2017	Change (%)
TATAGLOBAL	197.85	206.85	4.55	3741	13945	273%
MANAPPURAM	103.45	107.35	3.77	1516	5267	247%
MOTHERSUMI	316.7	326.8	3.19	1228	4043	229%
PFC	122.95	125.5	2.07	1076	3090	187%
BAJFINANCE	1799.7	1861.1	3.41	7175	20324	183%

TOP 5 VOLUME LOSER FOR THE SESSION

SCRIPS	CP AS ON 05/09/2017	CP AS ON 06/09/2017	Change (%)	Vol AS ON 05/08/2017	Vol AS ON 06/09/2017	Change (%)
BHARTIARTL	407.95	404.7	-0.80	6769	1891	-72%
JISLJALEQS	103.9	103.75	-0.14	4694	1740	-63%
SRTRANSFIN	1077.7	1065.45	-1.14	5813	2350	-60%
RAMCOCEM	728.35	722.25	-0.84	2080	888	-57%
CENTURYTEX	1279.85	1270.75	-0.71	8795	4024	-54%

Technical Trend

TOP 10 OPEN INTEREST GAINER FOR THE SESSION

SCRIPS	CP AS ON 05/09/2017	CP AS ON 06/09/2017	Change (%)	OI AS ON 05/08/2017	OI AS ON 06/09/2017	Change (%)
EQUITAS	173.6	180.4	3.92	8876800	10940800	23.25
PNB	144.3	139.75	-3.15	20783000	25518500	22.79
REPCOHOME	649.55	661.6	1.86	672700	814100	21.02
GODREJCP	932.25	905.8	-2.84	1729600	2068800	19.61
MUTHOOTFIN	468.55	507.3	8.27	2133000	2514000	17.86
RELIANCE	1634.1	1646.95	0.79	16987000	19955000	17.47
RELCAPITAL	743.95	753.05	1.22	4482000	5250000	17.14
JUSTDIAL	387.15	397.8	2.75	4776000	5570400	16.63
BAJAJFINSV	5427.4	5485.3	1.07	477875	534375	11.82
L&TFH	205.95	207.2	0.61	18337500	20340000	10.92

TOP 10 OPEN INTEREST LOSER FOR THE SESSION

SCRIPS	CP AS ON 05/09/2017	CP AS ON 06/09/2017	Change (%)	OI AS ON 05/08/2017	OI AS ON 06/09/2017	Change (%)
CONCOR	1349.75	1382.25	2.41	1144375	1019375	-10.92
COALINDIA	254.1	256.15	0.81	26950100	25736300	-4.50
DCBBANK	186.9	188.8	1.02	6327000	6057000	-4.27
ULTRACEMCO	4104.8	4154.9	1.22	1375200	1316800	-4.25
RBLBANK	540.3	541.8	0.28	3763000	3605000	-4.20
RAMCOCEM	728.35	722.25	-0.84	742400	713600	-3.88
ORIENTBANK	127.75	127.05	-0.55	14880000	14304000	-3.87
ARVIND	391.15	388.1	-0.78	5264000	5062000	-3.84
PAGEIND	18399.8	18250.75	-0.81	25550	24600	-3.72
HEXAWARE	276.1	271.15	-1.79	2337000	2253000	-3.59

Technical Trend

Pivot Report– Nifty 50

Symbol	PClose	Support3	Support2	Support1	Pivot	Resist1	Resist2	Resist3
ACC	1807.1	1771.1	1781.8	1794.5	1805.2	1817.9	1828.6	1841.3
ADANIPTS	385.1	378.8	381.6	383.3	386.1	387.8	390.6	392.3
AMBUJACEM	282.6	272.9	276.5	279.6	283.2	286.2	289.8	292.9
ASIANPAINT	1206.1	1182.8	1190.4	1198.2	1205.8	1213.7	1221.3	1229.1
AUOPHARMA	747.4	722.3	730.2	738.8	746.6	755.2	763.1	771.7
AXISBANK	492.9	478.4	485.0	488.9	495.5	499.4	506.0	509.9
BAJAJ-AUTO	2920.6	2861.8	2880.9	2900.7	2919.9	2939.7	2958.8	2978.6
BANKBARODA	138.4	133.8	135.1	136.7	138.0	139.6	140.9	142.5
BHARTIARTL	402.5	396.9	399.2	400.9	403.2	404.9	407.2	408.9
BOSCHLTD	21661.9	20701.4	21100.8	21381.3	21780.7	22061.2	22460.6	22741.1
BPCL	534.9	523.1	526.4	530.7	534.0	538.2	541.5	545.8
CIPLA	558.3	547.8	550.8	554.6	557.6	561.3	564.3	568.1
COALINDIA	255.8	245.6	248.3	252.1	254.8	258.6	261.3	265.1
DRREDDY	2196.9	2146.9	2161.3	2179.1	2193.6	2211.4	2225.8	2243.6
EICHERMOT	32082.6	31285.7	31460.5	31771.6	31946.4	32257.4	32432.2	32743.3
GAIL	382.3	363.3	369.3	375.8	381.8	388.3	394.3	400.8
HCLTECH	851.1	815.0	830.6	840.8	856.4	866.6	882.2	892.4
HDFC	1775.0	1729.3	1739.3	1757.1	1767.1	1784.9	1794.9	1812.7
HDFCBANK	1759.9	1719.5	1728.8	1744.3	1753.6	1769.1	1778.4	1793.9
HEROMOTOCO	3950.7	3873.9	3907.0	3928.8	3961.9	3983.7	4016.8	4038.6
HINDALCO	245.8	228.3	232.1	239.0	242.8	249.7	253.5	260.4
HINDUNILVR	1206.4	1188.8	1194.5	1200.5	1206.2	1212.2	1217.9	1223.9
IBULHSGFIN	1264.3	1180.4	1200.8	1232.5	1252.9	1284.7	1305.1	1336.8
ICICIBANK	295.4	292.7	293.5	294.4	295.2	296.1	296.9	297.8
INDUSINDBK	1684.8	1653.4	1663.3	1674.0	1683.9	1694.7	1704.6	1715.3
INFRATEL	371.5	362.1	364.8	368.1	370.8	374.1	376.8	380.1
INFY	895.6	880.0	885.0	890.3	895.3	900.6	905.6	910.9
IOC	428.3	414.7	420.4	424.3	430.0	433.9	439.6	443.5
ITC	275.7	267.9	271.6	273.6	277.3	279.4	283.1	285.1
KOTAKBANK	996.2	953.6	966.8	981.5	994.7	1009.4	1022.6	1037.3
LT	1117.6	1103.4	1109.7	1113.6	1119.9	1123.8	1130.1	1134.0
LUPIN	971.4	937.4	952.2	961.8	976.6	986.1	1000.9	1010.5
M&M	1316.6	1294.8	1302.4	1309.5	1317.1	1324.1	1331.7	1338.8
MARUTI	7846.7	7642.4	7706.2	7776.4	7840.2	7910.4	7974.2	8044.4
NTPC	167.8	165.4	166.0	166.9	167.5	168.4	169.0	169.9
ONGC	162.3	159.6	160.8	161.5	162.7	163.4	164.6	165.3
POWERGRID	214.3	209.8	211.4	212.9	214.5	215.9	217.5	219.0
RELIANCE	822.7	799.1	805.3	814.0	820.1	828.8	835.0	843.7
SBIN	274.3	270.1	271.9	273.1	274.9	276.1	277.9	279.1
SUNPHARMA	474.3	455.2	464.1	469.2	478.1	483.1	492.0	497.1
TATAMOTORS	382.7	376.0	378.9	380.8	383.8	385.7	388.6	390.5
TATAMTRDVR	214.9	209.8	211.7	213.3	215.1	216.7	218.6	220.2
TATAPOWER	78.0	76.9	77.4	77.7	78.2	78.5	79.0	79.3
TATASTEEL	653.0	636.4	640.9	647.0	651.5	657.6	662.1	668.2
TCS	2453.2	2419.0	2434.5	2443.9	2459.4	2468.7	2484.2	2493.6
TECHM	424.6	415.1	418.1	421.3	424.3	427.5	430.5	433.7
ULTRACEMCO	4150.3	4005.1	4041.6	4095.9	4132.5	4186.8	4223.3	4277.6
VEDL	318.3	308.4	310.9	314.6	317.0	320.7	323.2	326.9
WIPRO	297.2	294.4	295.3	296.2	297.1	298.0	298.9	299.8
YESBANK	1794.0	1726.7	1744.5	1769.2	1787.0	1811.7	1829.5	1854.2
ZEEL	520.1	516.9	518.0	519.0	520.1	521.1	522.2	523.2



BP WEALTH

Technical Research Desk

Tel: +91 22 61596173

Institutional Sales Desk

Tel: +91 22 61596403/04/05

Disclaimer Appendix

Analyst s holding in the Stock : Nil

Analyst s Certification:

We analysts and the authors of this report, hereby certify that all of the views expressed in this research report accurately reflect our personal views about any and all of the subject issuer s or securities. We also certify that no part of our compensation was, is, or will be directly or indirectly related to the specific recommendation s or view s in this report. Analysts aren't registered as research analysts by FINRA and might not be an associated person of the BP Equities Pvt. Ltd. Institutional Equities.

General Disclaimer

This report has been prepared by the research department of BP EQUITIES Pvt. Ltd, is for information purposes only. This report is not construed as an offer to sell or the solicitation of an offer to buy or sell any security in any jurisdiction where such an offer or solicitation would be illegal.

BP EQUITIES Pvt. Ltd have exercised due diligence in checking the correctness and authenticity of the information contained herein, so far as it relates to current and historical information, but do not guarantee its accuracy or completeness. The opinions expressed are our current opinions as of the date appearing in the material and may be subject to change from time to time. Prospective investors are cautioned that any forward looking statement are not predictions and are subject to change without prior notice.

Recipients of this material should rely on their own investigations and take their own professional advice. BP EQUITIES Pvt. Ltd or any of its affiliates or employees shall not be in any way responsible for any loss or damage that may arise to any person from any inadvertent error in the information contained in this report. BP EQUITIES Pvt. Ltd. or any of its affiliates or employees do not provide, at any time, any express or implied warranty of any kind, regarding any matter pertaining to this report, including without limitation the implied warranties of merchantability, fitness for a particular purpose, and non-infringement. The recipients of this report should rely on their own investigations.

BP EQUITIES Pvt. Ltd and/or its affiliates and/or employees may have interests/ positions, financial or otherwise in the securities mentioned in this report. Opinions expressed are our current opinions as of the date appearing on this material only. While we endeavor to update on a reasonable basis the information discussed in this material, there may be regulatory, compliance, or other reasons that prevent us from doing so.

This report is not directed to or intended for display, downloading, printing, reproducing or for distribution to or use by any person in any locality, state and country or other jurisdiction where such distribution, publication or use would be contrary to the law or regulation or would subject to BP EQUITIES Pvt. Ltd or any of its affiliates to any registration or licensing requirement within such jurisdiction.

Corporate Office:

4th floor,
Rustom Bldg,
29, Veer Nariman Road, Fort,
Mumbai-400001
Phone- +91 22 6159 6464
Fax-+91 22 6159 6160
Website- www.bpwealth.com

Registered Office:

24/26, 1st Floor, Cama Building,
Dalal street, Fort,
Mumbai-400001
BP Equities Pvt. Ltd.
CIN No: U67120MH1997PTC107392