



## Technical Trend

### INTRADAY TRADER'S PICKS

Sr.No.	STOCK	CLOSE	S1	S2	S3	R1	R2	R3	RECOMMENDATION
1	COROMANDEL	400.65	396	391	386	412	417	422	<b>BUY ABOVE 404</b>
2	LAKSHVILAS	181.95	180	177	174	186	189	192	<b>BUY ABOVE 183</b>
3	PROZONINTU	44.90	44.5	44	43.5	46.5	47	47.5	<b>BUY ABOVE 45.50</b>
4	PURVA	65.50	64.2	63	62	67.8	68	69	<b>BUY ABOVE 66</b>
5	SUNPHARMA	637.15	629	622	615	651	658	665	<b>BUY ABOVE 640</b>

## Technical Trend

### DERIVATIVES

#### INDICES SNAPSHOT

SCRIPS	CP AS ON 05/05/2017	CP AS ON 08/05/2017	Change (%)	OI AS ON 05/05/2017	OI AS ON 08/05/2017	Change (%)
BANKNIFTY	22652.35	22785.35	0.59	3652200	3807960	4.26
NIFTY	9316.7	9343.6	0.29	20227350	20457675	1.14
NIFTYIT	10107	10239	1.31	48950	47300	-3.37

#### Derivative Highlights

- ⇒ Nifty Future closed with a premium of 30 points v/s a premium of 31 points in the previous session.
- ⇒ Nifty Future Open Interest increased by 4.26%. BankNifty Future Open Interest increased by 1.14%
- ⇒ Nifty PCR - OI remained unchanged at 1.02, Nifty PCR - Vol increased from 1.02 to 1.11
- ⇒ FII Sold 542.47 crore while DII Bought Rs. 663.33 crore in the Cash Segment. FII Sold Rs. 237.68 crore in Index Futures and Bought Rs. 493.99 crore in index options, while in Stock Future they Bought Rs. 681.72 crore and Bought Rs 11.00 crore in stock options.
- ⇒ Among Index Option space, Highest Open Interest concentration was seen in 9300 & 9200 Strike price among the PE options. Where as among CE Options Highest Open Interest Concentration was seen in 9400 & 9500 Strike price.
- ⇒ Highest Open Interest Build Up among the PE options was seen in 9300 & 9400 Strike price. Among CE options highest build up was seen in 9450 & 9400 Strike price.

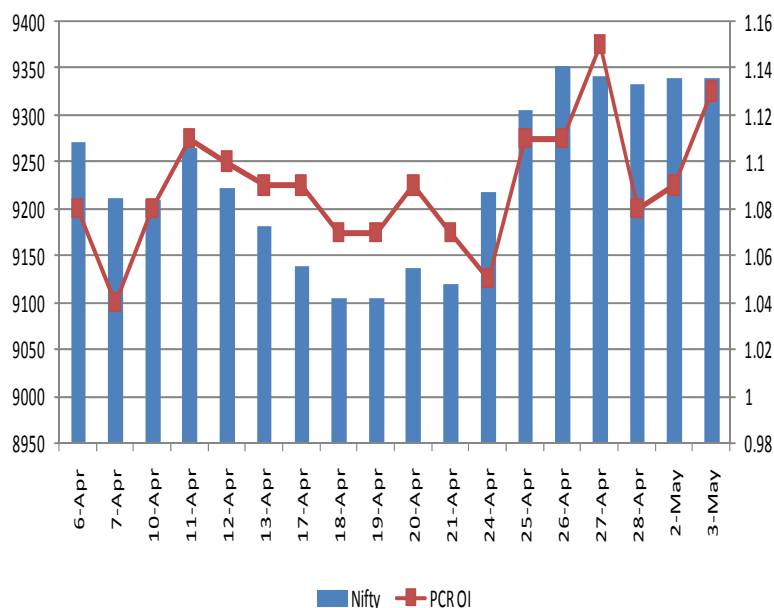
#### OI Concentration

PUT OPTION		CALL OPTION	
Strike Price	Open Interest	Strike Price	Open Interest
9300	5340675	9400	5747025
9200	4830600	9500	5498625
9000	4692000	9300	3375375
9100	4533075	9600	3258000
8900	2579850	9700	1598625

#### Highest Change in OI

PUT OPTION		CALL OPTION	
Strike Price	Change in OI	Strike Price	Change in OI
9300	441675	9450	307200
9400	366000	9400	261975
9200	213150	9500	259800
9100	140700	9600	168300
9000	133650	9300	115425

#### Nifty Future Price V/S PCR-OI



## Technical Trend

### Stock Analysis

Long Build-up	Long Unwinding	Short Build-up	Short Covering
ACC	GODREJCP	AJANTPHARM	AMBUJACEM
BHEL	UJJIVAN	CONCOR	BHARTIARTL
CESC		INFIBEAM	EQUITAS
DLF		ITC	IDEA
HEXAWARE		PETRONET	LUPIN
IBREALEST		UPL	RAYMOND

### STATISTICS

#### Highest Premium

SCRIPS	Premium %	Price change %
GMRINFRA	1.20	3.1
SOUTHBANK	0.78	1.4
ICI	0.77	0.3
IBREALEST	0.73	12.1
GSFC	0.71	1.6

#### Highest Discount

SCRIPS	Premium %	Price change %
CEATLTD	-3.85	0.4
INFIBEAM	-2.35	-3.2
BANKINDIA	-1.51	1.0
CANBK	-0.92	0.1
ORIENTBANK	-0.79	1.2

#### TOP 5 VOLUME GAINER FOR THE SESSION

SCRIPS	CP AS ON 05/05/2017	CP AS ON 08/05/2017	Change (%)	Vol AS ON 05/05/2017	Vol AS ON 08/05/2017	Change (%)
IDEA	82.05	88	7.25	1825	7863	331%
AMBUJACEM	247.85	261.7	5.59	4296	18498	331%
IBREALEST	152.8	171.45	12.21	2654	9198	247%
EQUITAS	160.6	161.55	0.59	1461	4713	223%
BHARTIARTL	345.7	353.35	2.21	2090	5770	176%

#### TOP 5 VOLUME LOSER FOR THE SESSION

SCRIPS	CP AS ON 05/05/2017	CP AS ON 08/05/2017	Change (%)	Vol AS ON 05/05/2017	Vol AS ON 08/05/2017	Change (%)
KTKBANK	167.95	166.85	-0.65	9918	1029	-90%
L&TFH	133.5	136.2	2.02	7050	1934	-73%
EXIDEIND	242.65	240.45	-0.91	5863	1638	-72%
MRF	68381.4	67864.85	-0.76	3562	1000	-72%
TATACOMM	641.8	655.4	2.12	13697	3941	-71%

## Technical Trend

### TOP 10 OPEN INTEREST GAINER FOR THE SESSION

SCRIPS	CP AS ON 05/05/2017	CP AS ON 08/05/2017	Change (%)	OI AS ON 05/05/2017	OI AS ON 08/05/2017	Change (%)
MRPL	127.5	136.05	6.71	2286000	3303000	44.49
NIITTECH	472.25	491.7	4.12	663000	870000	31.22
CANBK	386.1	391.35	1.36	13874916	15857928	14.29
BALRAMCHIN	159.2	158.5	-0.44	5407500	6142500	13.59
INFIBEAM	1000.55	981.95	-1.86	1075200	1221200	13.58
BALKRISIND	1521.9	1555.05	2.18	154000	173600	12.73
LICHSGFIN	721.6	707.5	-1.95	4667300	5205200	11.52
INDIANB	337.5	355.3	5.27	2312000	2578000	11.51
IBREALEST	152.8	171.45	12.21	23200000	25580000	10.26
MCX	1127	1119.5	-0.67	890500	976500	9.66

### TOP 10 OPEN INTEREST LOSER FOR THE SESSION

SCRIPS	CP AS ON 05/05/2017	CP AS ON 08/05/2017	Change (%)	OI AS ON 05/05/2017	OI AS ON 08/05/2017	Change (%)
IRB	257.45	256.55	-0.35	22682500	20245000	-10.75
IDEA	82.05	88	7.25	77861000	71666000	-7.96
CUMMINSIND	1038.25	1054.1	1.53	661800	613800	-7.25
TORNTPOWER	219.4	225.15	2.62	3915000	3669000	-6.28
ALBK	84.9	86.7	2.12	18070000	17020000	-5.81
KTKBANK	167.95	166.85	-0.65	34722625	32812500	-5.50
ULTRACEMCO	4331.65	4421.3	2.07	1677400	1590400	-5.19
JSWENERGY	64.65	67	3.63	55904500	53312500	-4.64
FEDERALBNK	116.8	118.7	1.63	62425000	60005000	-3.88
VGUARD	205.4	208.45	1.48	1668000	1608000	-3.60

## Technical Trend

### Pivot Report– Nifty 50

Symbol	PClose	Support3	Support2	Support1	Pivot	Resist1	Resist2	Resist3
ACC	1660.2	1565.7	1588.5	1624.3	<b>1647.1</b>	1683.0	1705.8	1741.6
ADANIPTS	345.0	328.3	332.2	338.6	<b>342.5</b>	348.9	352.8	359.2
AMBUJACEM	246.6	234.3	237.3	241.9	<b>244.9</b>	249.6	252.6	257.2
ASIANPAINT	1146.8	1107.9	1120.9	1133.9	<b>1146.9</b>	1159.9	1172.9	1185.9
AUOPHARMA	589.0	557.0	570.2	579.6	<b>592.8</b>	602.2	615.4	624.8
AXISBANK	504.5	477.3	489.9	497.2	<b>509.8</b>	517.1	529.7	537.0
BAJAJ-AUTO	2887.7	2808.6	2845.3	2866.5	<b>2903.2</b>	2924.3	2961.0	2982.2
BANKBARODA	187.4	161.9	173.1	180.2	<b>191.4</b>	198.5	209.7	216.8
BHARTIARTL	344.8	336.4	339.8	342.3	<b>345.6</b>	348.1	351.5	354.0
BOSCHLTD	23453.4	22336.1	22678.1	23065.8	<b>23407.8</b>	23795.5	24137.5	24525.2
BPCL	724.8	689.8	704.9	714.8	<b>729.9</b>	739.8	754.9	764.8
CIPLA	550.0	534.4	539.3	544.6	<b>549.5</b>	554.9	559.8	565.1
COALINDIA	278.5	269.8	273.9	276.2	<b>280.3</b>	282.6	286.7	289.0
DRREDDY	2603.0	2558.7	2576.3	2589.7	<b>2607.3</b>	2620.7	2638.3	2651.7
EICHERMOT	25833.4	24957.9	25259.6	25546.5	<b>25848.3</b>	26135.2	26436.9	26723.8
GAIL	418.8	396.6	405.1	412.0	<b>420.5</b>	427.3	435.8	442.7
GRASIM	1192.1	1141.2	1161.7	1176.9	<b>1197.5</b>	1212.7	1233.2	1248.4
HCLTECH	829.6	800.9	807.6	818.6	<b>825.3</b>	836.3	843.0	854.0
HDFC	1546.9	1505.9	1523.4	1535.1	<b>1552.7</b>	1564.4	1581.9	1593.6
HDFCBANK	1532.2	1508.1	1517.2	1524.7	<b>1533.8</b>	1541.3	1550.4	1557.9
HEROMOTOCO	3376.6	3284.2	3317.2	3346.9	<b>3379.9</b>	3409.6	3442.6	3472.3
HINDALCO	185.8	173.5	178.5	182.1	<b>187.1</b>	190.7	195.7	199.3
HINDUNILVR	953.9	938.8	944.1	949.0	<b>954.2</b>	959.1	964.4	969.3
IBULHSGFIN	1106.0	1041.1	1056.1	1081.0	<b>1096.0</b>	1121.0	1136.0	1160.9
ICICIBANK	298.6	287.5	291.0	294.8	<b>298.3</b>	302.1	305.6	309.4
INDUSINDBK	1408.1	1371.6	1387.7	1397.9	<b>1413.9</b>	1424.1	1440.2	1450.4
INFRATEL	366.6	348.6	353.5	360.1	<b>365.0</b>	371.6	376.5	383.1
INFY	931.5	904.5	912.3	921.9	<b>929.6</b>	939.2	947.0	956.6
IOC	433.1	412.1	421.0	427.0	<b>435.9</b>	442.0	450.9	456.9
ITC	277.2	270.8	273.6	275.4	<b>278.2</b>	279.9	282.7	284.5
KOTAKBANK	908.3	890.0	895.1	901.7	<b>906.9</b>	913.5	918.6	925.2
LT	1724.4	1680.1	1691.7	1708.0	<b>1719.6</b>	1735.9	1747.5	1763.8
LUPIN	1252.4	1221.5	1235.7	1244.0	<b>1258.3</b>	1266.6	1280.8	1289.1
M&M	1321.3	1284.5	1295.8	1308.5	<b>1319.8</b>	1332.5	1343.8	1356.5
MARUTI	6654.2	6537.6	6569.8	6612.0	<b>6644.2</b>	6686.4	6718.6	6760.8
NTPC	159.7	155.7	157.6	158.6	<b>160.5</b>	161.6	163.5	164.5
ONGC	183.8	174.8	178.5	181.2	<b>184.9</b>	187.5	191.2	193.9
POWERGRID	209.0	202.6	205.1	207.0	<b>209.5</b>	211.5	214.0	215.9
RELIANCE	1328.3	1270.7	1297.9	1313.1	<b>1340.2</b>	1355.4	1382.6	1397.8
SBIN	296.0	277.7	284.9	290.5	<b>297.7</b>	303.2	310.4	316.0
SUNPHARMA	630.2	612.8	619.4	624.8	<b>631.4</b>	636.8	643.4	648.8
TATAMOTORS	419.6	394.4	406.2	412.9	<b>424.7</b>	431.4	443.2	449.9
TATAMTRDVR	259.0	243.3	250.4	254.7	<b>261.7</b>	266.0	273.1	277.4
TATAPOWER	83.4	80.9	81.7	82.6	<b>83.4</b>	84.2	85.0	85.9
TATASTEEL	433.6	413.7	420.9	427.2	<b>434.4</b>	440.7	447.9	454.2
TCS	2320.5	2274.5	2288.5	2304.5	<b>2318.5</b>	2334.5	2348.5	2364.5
TECHM	413.0	400.1	405.3	409.1	<b>414.3</b>	418.1	423.3	427.1
ULTRACEMCO	4330.0	4234.9	4259.1	4294.5	<b>4318.8</b>	4354.2	4378.4	4413.8
WIPRO	499.3	492.1	494.2	496.8	<b>498.9</b>	501.4	503.5	506.1
YESBANK	1608.8	1571.8	1588.1	1598.4	<b>1614.7</b>	1625.1	1641.4	1651.7
ZEEL	505.6	479.7	491.7	498.7	<b>510.7</b>	517.6	529.6	536.6



BP WEALTH

Technical Research Desk

Tel: +91 22 61596173

Institutional Sales Desk

Tel: +91 22 61596403/04/05

## Disclaimer Appendix

### Analyst s holding in the Stock : Nil

#### Analyst s Certification:

We analysts and the authors of this report, hereby certify that all of the views expressed in this research report accurately reflect our personal views about any and all of the subject issuer s or securities. We also certify that no part of our compensation was, is, or will be directly or indirectly related to the specific recommendation s or view s in this report. Analysts aren't registered as research analysts by FINRA and might not be an associated person of the BP Equities Pvt. Ltd. Institutional Equities.

#### General Disclaimer

This report has been prepared by the research department of BP EQUITIES Pvt. Ltd, is for information purposes only. This report is not construed as an offer to sell or the solicitation of an offer to buy or sell any security in any jurisdiction where such an offer or solicitation would be illegal.

BP EQUITIES Pvt. Ltd have exercised due diligence in checking the correctness and authenticity of the information contained herein, so far as it relates to current and historical information, but do not guarantee its accuracy or completeness. The opinions expressed are our current opinions as of the date appearing in the material and may be subject to change from time to time. Prospective investors are cautioned that any forward looking statement are not predictions and are subject to change without prior notice.

Recipients of this material should rely on their own investigations and take their own professional advice. BP EQUITIES Pvt. Ltd or any of its affiliates or employees shall not be in any way responsible for any loss or damage that may arise to any person from any inadvertent error in the information contained in this report. BP EQUITIES Pvt. Ltd. or any of its affiliates or employees do not provide, at any time, any express or implied warranty of any kind, regarding any matter pertaining to this report, including without limitation the implied warranties of merchantability, fitness for a particular purpose, and non-infringement. The recipients of this report should rely on their own investigations.

BP EQUITIES Pvt. Ltd and/or its affiliates and/or employees may have interests/ positions, financial or otherwise in the securities mentioned in this report. Opinions expressed are our current opinions as of the date appearing on this material only. While we endeavor to update on a reasonable basis the information discussed in this material, there may be regulatory, compliance, or other reasons that prevent us from doing so.

This report is not directed to or intended for display, downloading, printing, reproducing or for distribution to or use by any person in any locality, state and country or other jurisdiction where such distribution, publication or use would be contrary to the law or regulation or would subject to BP EQUITIES Pvt. Ltd or any of its affiliates to any registration or licensing requirement within such jurisdiction.

#### Corporate Office:

4th floor,  
Rustom Bldg,  
29, Veer Nariman Road, Fort,  
Mumbai-400001  
Phone- +91 22 6159 6464  
Fax-+91 22 6159 6160  
Website- [www.bpwealth.com](http://www.bpwealth.com)

#### Registered Office:

24/26, 1st Floor, Cama Building,  
Dalal street, Fort,  
Mumbai-400001  
BP Equities Pvt. Ltd.  
CIN No: U67120MH1997PTC107392