

NIFTY FUT : IMMEDIATE RESISTANCE AT 10000



Source: Falcon, BP Equities Research

Nifty futures closed higher by 0.09% at 9989. Index formed Doji star candlestick pattern which suggests indecision at higher levels. Earlier index has reversed after taking support at previous trough, this trough is expected to act as strong support for short term trend. RSI has formed positive reversal with price which is a bullish signal for short term trend. Going ahead index has immediate resistance at 10000, for index to continue its up move it needs to sustain above this level which if it does will open the way for 10050-10080 while support comes at 9930-9880.

Intraday Nifty Future Resistance—10000/10050/10080 Support—9930/9880/9820

BANK NIFTY FUT : IMMEDIATE RESISTANCE AT 24200



Source: Falcon, BP Equities Research

Bank Nifty futures closed 0.26% higher at 24252. Index has surpassed its immediate resistance of 24200 which is a bullish signal for short term trend and is now expected to continue its pullback which started from 23600. Earlier Index has violated up sloping trend line which is drawn connecting the previous troughs which is a bearish signal for short term trend. Going ahead a sustenance above 24200 will continue the pullback towards 24360-24550 while support comes at 24100-23800.

Intraday Bank Nifty Future Resistance—24200/24360/24550 Support—24100/24000/23800

Technical Trend

INTRADAY TRADER'S PICKS

Sr.No.	STOCK	CLOSE	S1	S2	S3	R1	R2	R3	RECOMMENDATION
1	CHENNPETRO	427.55	424	420	416	434	438	442	BUY ABOVE 429
2	GHCL	218.30	217	214	211	225	228	231	BUY ABOVE 221
3	KECL	47.05	46.5	45.5	45	48.8	49.5	50	BUY ABOVE 47.5
4	LUPIN	1040	1030	1010	990	1070	1090	1110	BUY ABOVE 1050
5	NMDC	121.30	120	117.5	115	126	128.5	131	BUY ABOVE 123

Technical Trend

DERIVATIVES

INDICES SNAPSHOT

SCRIPS	CP AS ON 06/10/2017	CP AS ON 09/10/2017	Change (%)	OI AS ON 06/10/2017	OI AS ON 09/10/2017	Change (%)
BANKNIFTY	24228.05	24306.35	0.32	2184800	2231520	2.14
NIFTY	10003.4	10016.55	0.13	24651525	24969900	1.29
NIFTYIT	10674	10696	0.21	32450	30750	-5.24

Derivative Highlights

- ⇒ Nifty Future closed with a premium of 28 points.
- ⇒ Nifty Future Open Interest increased by 1.29%. BankNifty Future Open Interest increased by 2.14%.
- ⇒ Nifty PCR - OI increased from 1.37 to 1.38, Nifty PCR - Vol decreased from 1.65 to 1.08
- ⇒ FII Sold Rs 475.11 crore while DII Bought Rs. 55.42 crore in the Cash Segment. FII Sold Rs. 29.61 crore in Index Futures and Bought Rs.881.08 crore in index options, while in Future they Sold Rs. 218.73 crore and Bought Rs 66.11 crore in stock options
- ⇒ Among Index Option space, Highest Open Interest concentration was seen in 9800 & 9900 Strike price among the PE options. Where as among CE Options Highest Open Interest Concentration was seen in 10000 & 10100 Strike price.
- ⇒ Highest Open Interest Build Up among the PE options was seen in 9900 & 10000 Strike price. Among CE options highest build up was seen in 10100 & 10400 Strike price.

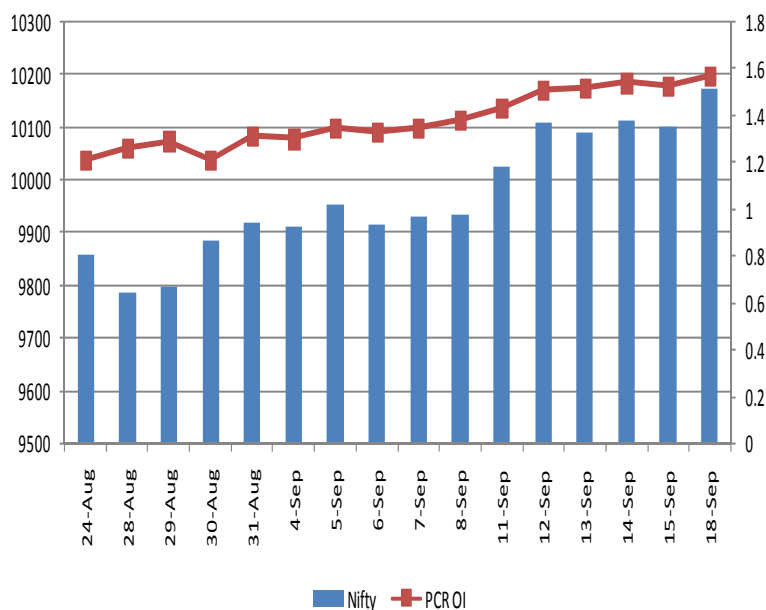
OI Concentration

PUT OPTION		CALL OPTION	
Strike Price	Open Interest	Strike Price	Open Interest
9800	5366775	10000	4083300
9900	4559100	10100	3662250
9700	4232700	9900	3310425
9500	3547875	10200	2942400
9600	3136275	10500	2213700

Highest Change in OI

PUT OPTION		CALL OPTION	
Strike Price	Change in OI	Strike Price	Change in OI
9900	1148025	10100	182925
10000	819750	10400	156750
9800	679950	10150	48600
9950	468825	10500	34050
9700	444900	11500	18825

Nifty Future Price V/S PCR-OI



Technical Trend

Stock Analysis

Long Build-up	Long Unwinding	Short Build-up	Short Covering
ADANI PORTS	CADILAHC	AMARAJABAT	BHEL
BATAINDIA	HAVELLS	BAJAJ-AUTO	DRREDDY
COALINDIA	JSWENERGY	DALMIABHA	GODREJIND
IDFC	VGUARD	INDIGO	MFSL
KOTAKBANK		LT	MGL
TATAMOTORS		POWERGRID	TATAPOWER

STATISTICS

Highest Premium

SCRIPS	Premium %	Price change %
NHPC	0.73	-1.62
MCX	0.69	0.79
GODREJIND	0.68	0.17
ADANIPOWER	0.66	-2.75
RNAVAL	0.66	2.33

Highest Discount

SCRIPS	Premium %	Price change %
COALINDIA	-0.34	1.68
BIOCON	-0.26	-1.91
NTPC	-0.26	-0.65
COLPAL	-0.17	0.05
BHARATFORG	-0.07	-0.41

TOP 5 VOLUME GAINER FOR THE SESSION

SCRIPS	CP AS ON 06/10/2017	CP AS ON 09/10/2017	Change (%)	Vol AS ON 06/10/2017	Vol AS ON 09/10/2017	Change (%)
SRF	1586.55	1752.25	10.44	923	7238	684.18%
IDFC	60.05	64.7	7.74	1569	9431	501.08%
TATAELXSI	833.5	868.8	4.24	907	4195	362.51%
IDFCBANK	57.6	59.8	3.82	707	3023	327.58%
PEL	2712.6	2782.25	2.57	629	2673	324.96%

TOP 5 VOLUME LOSER FOR THE SESSION

SCRIPS	CP AS ON 06/10/2017	CP AS ON 09/10/2017	Change (%)	Vol AS ON 06/10/2017	Vol AS ON 09/10/2017	Change (%)
NCC	86.3	86.2	-0.12	2513	649	-74.17%
ICIL	110.7	108.6	-1.90	1673	508	-69.64%
BALKRISIND	1712.3	1695.25	-1.00	720	251	-65.14%
GODFRYPHLP	1032.65	1032.45	-0.02	392	137	-65.05%
BEML	1746.55	1706.45	-2.30	2369	902	-61.92%

Technical Trend

TOP 10 OPEN INTEREST GAINER FOR THE SESSION

SCRIPS	CP AS ON 06/10/2017	CP AS ON 09/10/2017	Change (%)	OI AS ON 06/10/2017	OI AS ON 09/10/2017	Change (%)
SRF	1586.55	1752.25	10.44	655500	877500	33.87
POWERGRID	205.75	201.85	-1.90	19940000	23256000	16.63
APOLLOTYRE	243.5	239.3	-1.72	13917000	16131000	15.91
AMARAJABAT	705.7	688.75	-2.40	1995000	2282400	14.41
TATAELXSI	833.5	868.8	4.24	1540000	1740000	12.99
PCJEWELLER	375.7	382.45	1.80	10062000	11334000	12.64
M&MFIN	421.65	424.05	0.57	6685000	7487500	12.00
BIOCON	350.65	343.3	-2.10	9545400	10468800	9.67
RELCAPITAL	555.65	570.2	2.62	12486000	13690500	9.65
BATAINDIA	743.1	762.05	2.55	2225300	2435400	9.44

TOP 10 OPEN INTEREST LOSER FOR THE SESSION

SCRIPS	CP AS ON 06/10/2017	CP AS ON 09/10/2017	Change (%)	OI AS ON 06/10/2017	OI AS ON 09/10/2017	Change (%)
JUBLFOOD	1549.45	1504.1	-2.93	2093000	1743500	-16.70
JPASSOCIAT	19.95	18.6	-6.77	189856000	172856000	-8.95
PAGEIND	19039.15	18859.75	-0.94	29350	26850	-8.52
MGL	1131.45	1150.8	1.71	754200	702000	-6.92
HEXAWARE	266.55	267.3	0.28	2226000	2079000	-6.60
GRANULES	122.45	126.45	3.27	17535000	16515000	-5.82
BEML	1746.55	1706.45	-2.30	2527800	2388000	-5.53
TATAPOWER	80.85	81.95	1.36	38268000	36351000	-5.01
PVR	1318.2	1392.65	5.65	714000	680400	-4.71
CADILAHC	500.75	498.95	-0.36	3318400	3163200	-4.68

Technical Trend

Pivot Report– Nifty 50

Symbol	PClose	Support3	Support2	Support1	Pivot	Resist1	Resist2	Resist3
ADANIPTS	393.7	371.7	376.9	385.3	390.5	398.9	404.1	412.5
AMBUJACEM	280.3	270.5	273.3	276.8	279.6	283.0	285.8	289.3
ASIANPAINT	1158.6	1134.0	1143.4	1151.0	1160.4	1168.0	1177.4	1185.0
AUOPHARMA	729.1	686.5	705.9	717.5	736.8	748.4	767.8	779.4
AXISBANK	506.0	494.3	497.8	501.9	505.3	509.4	512.9	517.0
BAJAJ-AUTO	3125.5	3077.8	3097.9	3111.7	3131.8	3145.6	3165.7	3179.5
BAJFINANCE	1941.3	1882.2	1899.1	1920.2	1937.1	1958.2	1975.1	1996.2
BHARTIARTL	379.0	373.1	375.3	377.1	379.4	381.2	383.4	385.2
BOSCHLTD	21276.6	20505.0	20681.5	20979.1	21155.6	21453.1	21629.6	21927.2
BPCL	481.3	464.1	471.9	476.6	484.3	489.0	496.8	501.5
CIPLA	585.6	560.5	569.5	577.5	586.5	594.5	603.5	611.5
COALINDIA	281.4	273.0	274.9	278.1	280.0	283.3	285.2	288.4
DRREDDY	2409.0	2327.4	2353.3	2381.1	2407.1	2434.9	2460.8	2488.6
EICHERMOT	31874.2	30764.6	31032.9	31453.5	31721.8	32142.4	32410.7	32831.3
GAIL	446.1	431.5	438.0	442.0	448.5	452.5	459.0	463.0
HCLTECH	902.8	887.3	892.4	897.6	902.7	907.9	913.0	918.2
HDFC	1749.7	1713.4	1722.3	1736.0	1744.9	1758.6	1767.5	1781.2
HDFCBANK	1795.5	1777.2	1783.8	1789.7	1796.3	1802.2	1808.8	1814.7
HEROMOTOCO	3676.4	3614.3	3642.1	3659.3	3687.1	3704.3	3732.1	3749.3
HINDALCO	249.5	242.4	245.4	247.4	250.4	252.5	255.5	257.5
HINDPETRO	440.0	426.3	431.7	435.9	441.3	445.5	450.9	455.1
HINDUNILVR	1220.3	1190.8	1197.9	1209.1	1216.2	1227.4	1234.5	1245.7
IBULHSGFIN	1272.3	1228.0	1238.5	1255.4	1265.9	1282.7	1293.2	1310.1
ICICIBANK	271.8	264.9	268.1	269.9	273.1	275.0	278.2	280.0
INDUSINDBK	1699.5	1637.7	1655.9	1677.7	1695.8	1717.6	1735.8	1757.6
INFRATEL	398.5	387.0	392.3	395.4	400.7	403.8	409.1	412.2
INFY	923.9	900.6	907.3	915.6	922.3	930.6	937.3	945.6
IOC	414.2	401.3	406.6	410.4	415.6	419.4	424.7	428.5
ITC	268.0	263.8	265.1	266.6	267.9	269.3	270.6	272.1
KOTAKBANK	1050.0	1020.1	1027.6	1038.8	1046.3	1057.5	1065.0	1076.2
LT	1141.0	1114.4	1126.6	1133.8	1146.0	1153.2	1165.4	1172.6
LUPIN	1040.0	1019.2	1026.5	1033.2	1040.5	1047.3	1054.6	1061.3
M&M	1304.9	1284.4	1291.7	1298.3	1305.6	1312.2	1319.5	1326.1
MARUTI	7896.7	7766.3	7816.5	7856.6	7906.8	7946.9	7997.1	8037.2
NTPC	174.9	170.1	172.1	173.5	175.6	177.0	179.0	180.4
ONGC	170.7	166.5	168.5	169.6	171.5	172.6	174.6	175.7
POWERGRID	201.0	193.6	196.6	198.8	201.8	204.0	207.0	209.2
RELIANCE	830.7	814.0	821.0	825.8	832.8	837.6	844.6	849.4
SBIN	256.9	250.2	252.2	254.5	256.6	258.9	260.9	263.2
SUNPHARMA	531.4	507.7	514.6	523.0	530.0	538.4	545.3	553.7
TATAMOTORS	425.6	412.7	417.9	421.7	426.9	430.8	436.0	439.8
TATASTEEL	697.3	678.3	685.0	691.1	697.8	703.9	710.6	716.7
TCS	2454.1	2413.9	2427.5	2440.8	2454.4	2467.7	2481.3	2494.6
TECHM	463.3	446.9	450.4	456.9	460.4	466.9	470.4	476.9
ULTRACEMCO	3957.4	3851.7	3885.9	3921.6	3955.8	3991.5	4025.7	4061.4
UPL	792.9	775.5	782.9	787.9	795.3	800.3	807.7	812.7
VEDL	324.0	316.5	319.8	321.9	325.2	327.3	330.6	332.7
WIPRO	286.8	282.4	283.5	285.1	286.2	287.9	289.0	290.6
YESBANK	370.9	355.7	359.4	365.2	368.9	374.7	378.4	384.2
ZEEL	525.8	514.8	519.3	522.5	527.0	530.2	534.7	537.9



BP WEALTH

Technical Research Desk

Tel: +91 22 61596173

Institutional Sales Desk

Tel: +91 22 61596403/04/05

Disclaimer Appendix

Analyst s holding in the Stock : Nil

Analyst s Certification:

We analysts and the authors of this report, hereby certify that all of the views expressed in this research report accurately reflect our personal views about any and all of the subject issuer s or securities. We also certify that no part of our compensation was, is, or will be directly or indirectly related to the specific recommendation s or view s in this report. Analysts aren't registered as research analysts by FINRA and might not be an associated person of the BP Equities Pvt. Ltd. Institutional Equities.

General Disclaimer

This report has been prepared by the research department of BP EQUITIES Pvt. Ltd, is for information purposes only. This report is not construed as an offer to sell or the solicitation of an offer to buy or sell any security in any jurisdiction where such an offer or solicitation would be illegal.

BP EQUITIES Pvt. Ltd have exercised due diligence in checking the correctness and authenticity of the information contained herein, so far as it relates to current and historical information, but do not guarantee its accuracy or completeness. The opinions expressed are our current opinions as of the date appearing in the material and may be subject to change from time to time. Prospective investors are cautioned that any forward looking statement are not predictions and are subject to change without prior notice.

Recipients of this material should rely on their own investigations and take their own professional advice. BP EQUITIES Pvt. Ltd or any of its affiliates or employees shall not be in any way responsible for any loss or damage that may arise to any person from any inadvertent error in the information contained in this report. BP EQUITIES Pvt. Ltd. or any of its affiliates or employees do not provide, at any time, any express or implied warranty of any kind, regarding any matter pertaining to this report, including without limitation the implied warranties of merchantability, fitness for a particular purpose, and non-infringement. The recipients of this report should rely on their own investigations.

BP EQUITIES Pvt. Ltd and/or its affiliates and/or employees may have interests/ positions, financial or otherwise in the securities mentioned in this report. Opinions expressed are our current opinions as of the date appearing on this material only. While we endeavor to update on a reasonable basis the information discussed in this material, there may be regulatory, compliance, or other reasons that prevent us from doing so.

This report is not directed to or intended for display, downloading, printing, reproducing or for distribution to or use by any person in any locality, state and country or other jurisdiction where such distribution, publication or use would be contrary to the law or regulation or would subject to BP EQUITIES Pvt. Ltd or any of its affiliates to any registration or licensing requirement within such jurisdiction.

Corporate Office:

4th floor,
Rustom Bldg,
29, Veer Nariman Road, Fort,
Mumbai-400001
Phone- +91 22 6159 6464
Fax-+91 22 6159 6160
Website- www.bpwealth.com

Registered Office:

24/26, 1st Floor, Cama Building,
Dalal street, Fort,
Mumbai-400001
BP Equities Pvt. Ltd.
CIN No: U67120MH1997PTC107392