

NIFTY FUT : IMMEDIATE RESISTANCE AT 10070



Nifty futures closed higher by 0.72% at 10006. After consolidating for past six sessions index continued its up move which suggests the resumption of up move which start from 9685. Index earlier had reversed after taking support at lower trend line of the broadening wedge, this trend line is expected to act as strong support for short term trend. Going ahead index a sustenance above 10000 will continue the upmove towards 10050-10090 while support comes at 9960-9860.

Intraday Nifty Future Resistance—10070/10110/10150 Support—9980/9940/9900

BANK NIFTY FUT : IMMEDIATE RESISTANCE AT 24750



Bank Nifty futures closed 1.24% higher at 24672. After consolidating for past six sessions index continued its up move which suggests the resumption of up move which start from 23822. Going ahead a sustenance above 24670 will continue the up move towards 24900-25050 while support comes at 24530-24400.

Intraday Bank Nifty Future Resistance—24750/24900/25050 Support—24530/24400/24300

Technical Trend

INTRADAY TRADER'S PICKS

Sr.No.	STOCK	CLOSE	S1	S2	S3	R1	R2	R3	RECOMMENDATION
1	HINDOILEXP	95.8	94	92	90	98	100	102	BUY ABOVE 96
2	OMAXE	198	196	193	190	202	205	208	BUY ABOVE 199
3	SHREYANIND	173.60	172	169	166	178	181	184	BUY ABOVE 175
4	SPARC	374.90	371	366	361	381	386	391	BUY ABOVE 376
5	TNPL	351.95	348	344	340	359	363	367	BUY ABOVE 353.5

Technical Trend

DERIVATIVES

INDICES SNAPSHOT

SCRIPS	CP AS ON 08/09/2017	CP AS ON 11/09/2017	Change (%)	OI AS ON 08/08/2017	OI AS ON 11/09/2017	Change (%)
BANKNIFTY	24374.6	24659.9	1.17	1951800	2426880	24.34
NIFTY	9950	10025.9	0.76	20118900	20522025	2.00
NIFTYIT	10457	10455	-0.02	30700	31250	1.79

Derivative Highlights

- ⇒ Nifty Future closed with a premium of 20 points.
- ⇒ Nifty Future Open Interest increased by 2%. BankNifty Future Open Interest increased by 24.34%.
- ⇒ Nifty PCR - OI increased from 1.38 to 1.43, Nifty PCR - Vol increased from 1.15 to 1.32
- ⇒ FII Sold Rs 392.52 crore while DII Bought Rs. 877.37 crore in the Cash Segment. FII Sold Rs. 246.72 crore in Index Futures and Bought Rs. 307.80 crore in index options, while in Future they Bought Rs. 164.62 crore and Bought Rs 94.09 crore in stock options
- ⇒ Among Index Option space, Highest Open Interest concentration was seen in 9900 & 9800 Strike price among the PE options. Where as among CE Options Highest Open Interest Concentration was seen in 10000 & 10200 Strike price.
- ⇒ Highest Open Interest Build Up among the PE options was seen in 1000 & 9900 Strike price. Among CE options highest build up was seen in 10200 & 10150 Strike price.

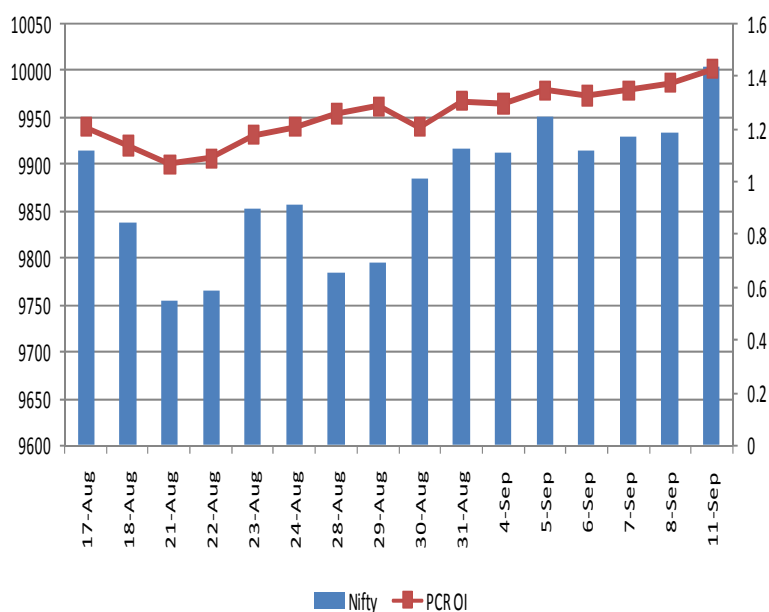
OI Concentration

PUT OPTION		CALL OPTION	
Strike Price	Open Interest	Strike Price	Open Interest
9900	5600475	10000	3889875
9800	5039775	10200	3656775
9700	5033550	10100	3627225
9500	3424800	10500	2271150
10000	3339825	9900	2258775

Highest Change in OI

PUT OPTION		CALL OPTION	
Strike Price	Change in OI	Strike Price	Change in OI
10000	1031925	10200	495225
9900	422550	10150	101700
9300	291150	10100	98925
9200	242400	9400	97500
9950	216225	11000	39150

Nifty Future Price V/S PCR-OI



Technical Trend

Stock Analysis

Long Build-up	Long Unwinding	Short Build-up	Short Covering
ADANI PORTS	-	AJANT PHARM	BHARAT FIN
BATA INDIA		AXIS BANK	COAL INDIA
CHENNPETRO		CADILAH C	GRASIM
HAVELLS		ICICI BANK	HINDUNILVR
INDUSINDBK		RBL BANK	MOTHERSUMI
PETRONET		WIPRO	STAR

STATISTICS

Highest Premium

SCRIPS	Premium %	Price change %
MCX	0.62	-0.5
GODREJIND	0.59	0.4
GMRINFRA	0.58	-1.4
KPIT	0.58	-2.7
BEL	0.56	-3.0

Highest Discount

SCRIPS	Premium %	Price change %
NIITTECH	-2.13	-2.0
PTC	-2.02	-1.3
OIL	-1.41	3.2
RELINFRA	-1.26	-2.6
RECLTD	-1.23	-0.1

TOP 5 VOLUME GAINER FOR THE SESSION

SCRIPS	CP AS ON 08/09/2017	CP AS ON 11/09/2017	Change (%)	Vol AS ON 08/08/2017	Vol AS ON 11/09/2017	Change (%)
BATAINDIA	694.85	722.2	3.94	1025	6294	514%
INDUSINDBK	1699	1788.4	5.26	2894	15433	433%
PETRONET	224.55	238.1	6.03	1393	6765	386%
GAIL	381.55	396.65	3.96	1770	7562	327%
JUBLFOOD	1386.7	1458.7	5.19	1947	7580	289%

TOP 5 VOLUME LOSER FOR THE SESSION

SCRIPS	CP AS ON 08/09/2017	CP AS ON 11/09/2017	Change (%)	Vol AS ON 08/08/2017	Vol AS ON 11/09/2017	Change (%)
DRREDDY	2164.6	2169.7	0.24	18175	3409	-81%
BIOCON	343.5	337.95	-1.62	7105	1581	-78%
MANAPPURAM	108.8	108.65	-0.14	8066	2061	-74%
TATACHEM	624.05	621.05	-0.48	4639	1452	-69%
SREINFRA	117.85	113.25	-3.90	2982	1033	-65%

Technical Trend

TOP 10 OPEN INTEREST GAINER FOR THE SESSION

SCRIPS	CP AS ON 08/09/2017	CP AS ON 11/09/2017	Change (%)	OI AS ON 08/08/2017	OI AS ON 11/09/2017	Change (%)
BATAINDIA	694.85	722.2	3.94	2286900	2818200	23.23
CADILAHC	503.65	479.55	-4.79	3065600	3651200	19.10
RBLBANK	538.8	538.35	-0.08	3809000	4460000	17.09
BERGEPAIN	257.05	267.95	4.24	2299000	2684000	16.75
TORNTPHARM	1209.1	1195.95	-1.09	216400	251200	16.08
HAVELLS	489.4	498.35	1.83	3236000	3750000	15.88
INDUSINDBK	1699	1788.4	5.26	4300200	4959000	15.32
PETRONET	224.55	238.1	6.03	11424000	13119000	14.84
PVR	1373.35	1351.7	-1.58	657200	742000	12.90
SIEMENS	1282.2	1338.05	4.36	616000	690000	12.01

TOP 10 OPEN INTEREST LOSER FOR THE SESSION

SCRIPS	CP AS ON 08/09/2017	CP AS ON 11/09/2017	Change (%)	OI AS ON 08/08/2017	OI AS ON 11/09/2017	Change (%)
NTPC	167.85	170.65	1.67	27368000	25120000	-8.21
GRASIM	1210.25	1233.35	1.91	2553000	2394750	-6.20
OIL	310.9	325.9	4.82	3319690	3127080	-5.80
BHARATFIN	938.7	967.6	3.08	12626000	11912000	-5.65
CHOLAFIN	1163.05	1177.05	1.20	410500	391500	-4.63
ALBK	67.65	68.3	0.96	12930000	12350000	-4.49
INDIANB	273.65	281.2	2.76	4942000	4730000	-4.29
JSWENERGY	72.05	74	2.71	66597500	64574500	-3.04
CIPLA	552.7	553.35	0.12	8110000	7875000	-2.90
EXIDEIND	220	221.7	0.77	13332000	12952000	-2.85

Technical Trend

Pivot Report– Nifty 50

Symbol	PClose	Support3	Support2	Support1	Pivot	Resist1	Resist2	Resist3
ACC	1797.6	1772.5	1782.5	1790.0	1800.0	1807.5	1817.5	1825.0
ADANIPTS	385.4	376.9	380.6	383.0	386.7	389.1	392.8	395.2
AMBUJACEM	285.1	276.2	279.2	282.1	285.1	288.0	291.0	293.9
ASIANPAINT	1238.1	1170.0	1184.8	1211.4	1226.2	1252.8	1267.6	1294.2
AUOPHARMA	741.7	726.3	731.9	736.8	742.4	747.3	752.9	757.8
AXISBANK	493.9	487.2	489.9	491.9	494.7	496.7	499.4	501.4
BAJAJ-AUTO	2929.6	2872.4	2891.2	2910.4	2929.2	2948.4	2967.2	2986.4
BANKBARODA	137.5	134.1	135.6	136.5	138.1	139.0	140.5	141.4
BHARTIARTL	403.0	389.6	394.1	398.5	403.0	407.4	411.9	416.3
BOSCHLTD	22057.3	21578.3	21789.2	21923.2	22134.1	22268.1	22479.0	22613.0
BPCL	512.3	493.9	502.2	507.2	515.5	520.5	528.8	533.8
CIPLA	553.9	541.7	545.9	549.9	554.0	558.0	562.2	566.2
COALINDIA	257.1	250.7	253.0	255.0	257.3	259.4	261.7	263.7
DRREDDY	2159.5	2099.0	2126.5	2143.0	2170.5	2187.0	2214.5	2231.0
EICHERMOT	32498.6	31999.1	32199.5	32349.1	32549.5	32699.1	32899.5	33049.1
GAIL	394.8	368.7	376.4	385.6	393.2	402.4	410.1	419.3
HCLTECH	860.7	837.4	844.7	852.7	860.0	868.0	875.3	883.3
HDFC	1781.7	1753.7	1765.0	1773.4	1784.7	1793.0	1804.3	1812.7
HDFCBANK	1823.4	1760.6	1775.4	1799.4	1814.2	1838.2	1853.0	1877.0
HERMOTOCO	3944.5	3857.4	3897.0	3920.8	3960.4	3984.1	4023.7	4047.5
HINDALCO	250.1	241.0	243.8	246.9	249.7	252.8	255.6	258.7
HINDUNILVR	1219.9	1180.6	1193.3	1206.6	1219.3	1232.6	1245.3	1258.6
IBULHSGFIN	1297.9	1265.4	1280.3	1289.1	1304.1	1312.9	1327.8	1336.6
ICICIBANK	290.8	284.0	286.5	288.7	291.2	293.3	295.8	298.0
INDUSINDBK	1791.3	1623.4	1662.1	1726.7	1765.3	1829.9	1868.6	1933.2
INFRATEL	369.5	361.0	363.7	366.6	369.4	372.3	375.0	377.9
INFY	878.7	852.8	863.2	871.0	881.4	889.1	899.5	907.3
IOC	429.1	417.9	422.9	426.0	431.0	434.0	439.0	442.1
ITC	273.6	269.0	270.3	271.9	273.2	274.8	276.1	277.7
KOTAKBANK	1006.5	986.2	993.6	1000.1	1007.5	1014.0	1021.4	1027.9
LT	1217.9	1099.5	1126.0	1171.9	1198.5	1244.4	1270.9	1316.8
LUPIN	977.3	954.5	961.3	969.3	976.1	984.1	990.9	998.9
M&M	1280.2	1210.1	1244.1	1262.1	1296.1	1314.1	1348.1	1366.1
MARUTI	8142.4	7870.9	7935.5	8038.9	8103.5	8206.9	8271.5	8374.9
NTPC	170.6	163.2	165.0	167.8	169.5	172.3	174.1	176.9
ONGC	163.1	158.5	159.8	161.4	162.7	164.3	165.6	167.2
POWERGRID	215.6	206.8	208.7	212.2	214.1	217.5	219.4	222.9
RELIANCE	817.9	803.7	810.1	814.0	820.4	824.3	830.7	834.6
SBIN	271.0	265.2	267.4	269.2	271.3	273.1	275.3	277.1
SUNPHARMA	467.5	453.4	459.8	463.6	470.0	473.8	480.2	484.0
TATAMOTORS	375.3	367.2	370.7	373.0	376.5	378.8	382.3	384.6
TATAMTRDVR	214.9	209.2	210.8	212.8	214.4	216.4	218.0	220.0
TATAPOWER	80.6	75.6	76.7	78.7	79.8	81.8	82.9	84.9
TATASTEEL	662.6	644.3	648.4	655.5	659.7	666.8	670.9	678.0
TCS	2454.5	2409.0	2429.5	2442.0	2462.5	2474.9	2495.4	2507.9
TECHM	441.5	427.3	430.6	436.0	439.3	444.7	448.0	453.4
ULTRACEMCO	4174.6	4112.2	4131.6	4153.1	4172.6	4194.1	4213.5	4235.0
VEDL	329.7	317.1	320.8	325.3	329.0	333.4	337.1	341.6
WIPRO	301.2	296.7	298.5	299.8	301.6	303.0	304.8	306.1
YESBANK	1842.1	1730.8	1762.5	1802.3	1834.0	1873.8	1905.5	1945.3
ZEEL	520.3	513.5	516.6	518.5	521.6	523.4	526.5	528.4



BP WEALTH

Technical Research Desk

Tel: +91 22 61596173

Institutional Sales Desk

Tel: +91 22 61596403/04/05

Disclaimer Appendix

Analyst s holding in the Stock : Nil

Analyst s Certification:

We analysts and the authors of this report, hereby certify that all of the views expressed in this research report accurately reflect our personal views about any and all of the subject issuer s or securities. We also certify that no part of our compensation was, is, or will be directly or indirectly related to the specific recommendation s or view s in this report. Analysts aren't registered as research analysts by FINRA and might not be an associated person of the BP Equities Pvt. Ltd. Institutional Equities.

General Disclaimer

This report has been prepared by the research department of BP EQUITIES Pvt. Ltd, is for information purposes only. This report is not construed as an offer to sell or the solicitation of an offer to buy or sell any security in any jurisdiction where such an offer or solicitation would be illegal.

BP EQUITIES Pvt. Ltd have exercised due diligence in checking the correctness and authenticity of the information contained herein, so far as it relates to current and historical information, but do not guarantee its accuracy or completeness. The opinions expressed are our current opinions as of the date appearing in the material and may be subject to change from time to time. Prospective investors are cautioned that any forward looking statement are not predictions and are subject to change without prior notice.

Recipients of this material should rely on their own investigations and take their own professional advice. BP EQUITIES Pvt. Ltd or any of its affiliates or employees shall not be in any way responsible for any loss or damage that may arise to any person from any inadvertent error in the information contained in this report. BP EQUITIES Pvt. Ltd. or any of its affiliates or employees do not provide, at any time, any express or implied warranty of any kind, regarding any matter pertaining to this report, including without limitation the implied warranties of merchantability, fitness for a particular purpose, and non-infringement. The recipients of this report should rely on their own investigations.

BP EQUITIES Pvt. Ltd and/or its affiliates and/or employees may have interests/ positions, financial or otherwise in the securities mentioned in this report. Opinions expressed are our current opinions as of the date appearing on this material only. While we endeavor to update on a reasonable basis the information discussed in this material, there may be regulatory, compliance, or other reasons that prevent us from doing so.

This report is not directed to or intended for display, downloading, printing, reproducing or for distribution to or use by any person in any locality, state and country or other jurisdiction where such distribution, publication or use would be contrary to the law or regulation or would subject to BP EQUITIES Pvt. Ltd or any of its affiliates to any registration or licensing requirement within such jurisdiction.

Corporate Office:

4th floor,
Rustom Bldg,
29, Veer Nariman Road, Fort,
Mumbai-400001
Phone- +91 22 6159 6464
Fax-+91 22 6159 6160
Website- www.bpwealth.com

Registered Office:

24/26, 1st Floor, Cama Building,
Dalal street, Fort,
Mumbai-400001
BP Equities Pvt. Ltd.
CIN No: U67120MH1997PTC107392