

## NIFTY FUT : IMMEDIATE RESISTANCE AT 10120



Nifty futures closed higher by 1.12% at 10096. Index had a gap up opening and continued to rise throughout the session. Price has surpassed resistance from 78.6% retracement of its previous decline from the peak of 10179 to the trough of 9688. Going ahead sustenance above 10120 can propel the price higher towards 10160-10220, whereas support is formed in the range of 10040-9980

Intraday Nifty Future

Resistance—10120/10160/10220 Support—10040/9980/9950

## BANK NIFTY FUT : IMMEDIATE RESISTANCE AT 24450



Bank Nifty futures closed 1.05% higher at 24361. Index had a gap up opening and closed the session on a positive note, however price failed to surpass the range formed by its previous candlestick on a closing basis, thus forming a Inside day Candlestick pattern. Going ahead index has immediate resistance at 24450, sustenance above this level can propel price higher towards 24700-24850 whereas support is formed at 24150-24000.

Intraday Bank Nifty Future

Resistance—24450/24700/24850 Support—24150/24000/23850

## Technical Trend

### INTRADAY TRADER'S PICKS

Sr.No.	STOCK	CLOSE	S1	S2	S3	R1	R2	R3	RECOMMENDATION
1	BAJAJCORP	416.95	411	405	399	427	433	439	<b>BUY ABOVE 419</b>
2	GNA	383.65	380	376	372	392	396	400	<b>BUY ABOVE 386</b>
3	MINDAIND	816.65	808	799	790	836	845	854	<b>BUY ABOVE 822</b>
4	SHRIRAMEPC	19.70	19.5	19.1	18.7	20.5	20.9	21.3	<b>BUY ABOVE 20</b>
5	TECHM	474.20	470	465	460	482	487	492	<b>BUY ABOVE 476</b>

## Technical Trend

### DERIVATIVES

#### INDICES SNAPSHOT

SCRIPS	CP AS ON 11/10/2017	CP AS ON 12/10/2017	Change (%)	OI AS ON 11/10/2017	OI AS ON 12/10/2017	Change (%)
BANKNIFTY	24111.55	24385.15	1.13	2605200	2369400	-9.05
NIFTY	9992.5	10111.4	1.19	26653800	27848400	4.48
NIFTYIT	10786	10869	0.77	31950	32500	1.72

#### Derivative Highlights

- ⇒ Nifty Future closed with a premium of 15 points.
- ⇒ Nifty Future Open Interest increased by 4.48%. BankNifty Future Open Interest decreased by 9.05%.
- ⇒ Nifty PCR - OI increased from 1.35 to 1.50, Nifty PCR - Vol increased from 1.15 to 1.24
- ⇒ FII Sold Rs 668.13 crore while DII Bought Rs. 872.54 crore in the Cash Segment. FII Sold Rs. 262.75 crore in Index Futures and Sold Rs.23.84 crore in index options, while in Future they Bought Rs. 742.17 crore and Bought Rs 99.22 crore in stock options
- ⇒ Among Index Option space, Highest Open Interest concentration was seen in 10000 & 9900 Strike price among the PE options. Where as among CE Options Highest Open Interest Concentration was seen in 10000 & 10100 Strike price.
- ⇒ Highest Open Interest Build Up among the PE options was seen in 10000 & 10100 Strike price. Among CE options highest build up was seen in 10250 & 10350 Strike price.

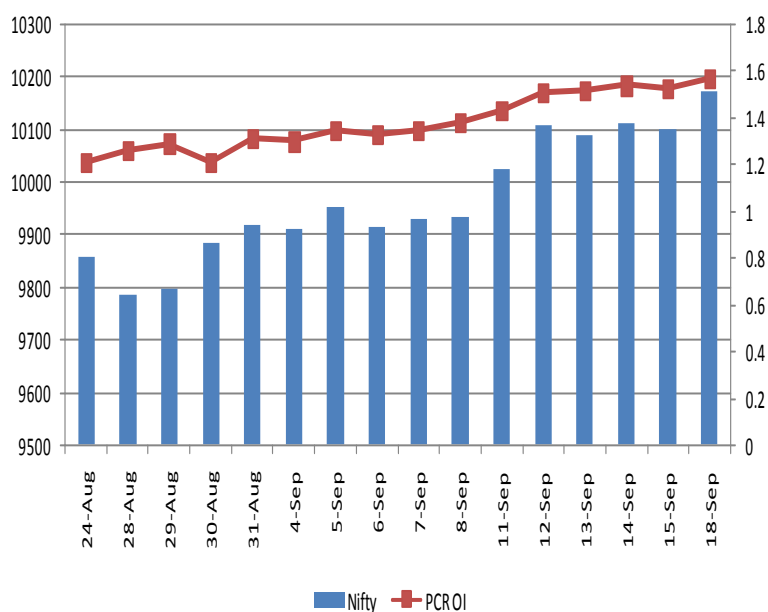
#### OI Concentration

PUT OPTION		CALL OPTION	
Strike Price	Open Interest	Strike Price	Open Interest
10000	6549300	10000	3795000
9900	5959050	10100	3777900
9800	5505900	10200	3096450
9700	4089075	9900	2649225
9500	3938775	10300	2600100

#### Highest Change in OI

PUT OPTION		CALL OPTION	
Strike Price	Change in OI	Strike Price	Change in OI
10000	1257600	10250	71775
10100	1107525	10350	55200
9900	1028400	10300	23925
9700	358575	9600	23625
9500	316500	10700	17325

#### Nifty Future Price V/S PCR-OI



## Technical Trend

### Stock Analysis

Long Build-up	Long Unwinding	Short Build-up	Short Covering
ACC	CANBK	BANKINDIA	AUROPHARMA
BRITANNIA	MINDTREE	GRASIM	BANKBARODA
FORTIS	ORIENTBANK	INFY	CHENNPETRO
GRANULES		JISLJALEQS	IDFC
IDFCBANK		PFC	KSCL
NBCC			SUNPHARMA

### STATISTICS

#### Highest Premium

SCRIPS	Premium %	Price change %
IFCI	0.88	0.2
JPASSOCIAT	0.78	3.5
BANKINDIA	0.68	1.9
ANDHRABANK	0.63	0.6
RCOM	0.62	-0.3

#### Highest Discount

SCRIPS	Premium %	Price change %
HDFCBANK	-0.22	1.6
COALINDIA	-0.14	-0.2
APOLLOTYRE	-0.04	1.8
AXISBANK	-0.03	1.8
HINDALCO	-0.02	6.0

#### TOP 5 VOLUME GAINER FOR THE SESSION

SCRIPS	CP AS ON 11/10/2017	CP AS ON 12/10/2017	Change (%)	Vol AS ON 11/10/2017	Vol AS ON 12/10/2017	Change (%)
NBCC	221.8	242.85	9.49	1043	5367	414.57%
NESTLEIND	7297.5	7415.8	1.62	157	791	403.82%
BRITANNIA	4391.3	4570.75	4.09	994	3419	243.96%
INFRATEL	411.5	432.9	5.20	2457	6983	184.21%
HINDALCO	249.65	264.4	5.91	6491	18150	179.62%

#### TOP 5 VOLUME LOSER FOR THE SESSION

SCRIPS	CP AS ON 11/10/2017	CP AS ON 12/10/2017	Change (%)	Vol AS ON 11/10/2017	Vol AS ON 12/10/2017	Change (%)
NHPC	28.3	28.5	0.71	642	151	-76.48%
IGL	1519.7	1530.3	0.70	5748	1361	-76.32%
SOUTHBANK	30.8	31.5	2.27	7653	2208	-71.15%
HINDPETRO	454.65	458.25	0.79	12320	4148	-66.33%
BPCL	491.1	492.5	0.29	6320	2157	-65.87%

## Technical Trend

### TOP 10 OPEN INTEREST GAINER FOR THE SESSION

SCRIPS	CP AS ON 11/10/2017	CP AS ON 12/10/2017	Change (%)	OI AS ON 11/10/2017	OI AS ON 12/10/2017	Change (%)
NBCC	221.8	242.85	9.49	3003000	4647000	54.75
NESTLEIND	7297.5	7415.8	1.62	95100	112400	18.19
HINDALCO	249.65	264.4	5.91	36869000	43074500	16.83
BRITANNIA	4391.3	4570.75	4.09	646800	754200	16.60
PFC	121.55	120.55	-0.82	31074000	35760000	15.08
NATIONALUM	81.8	86.65	5.93	21720000	24616000	13.33
INFRATEL	411.5	432.9	5.20	9227600	10438000	13.12
NIITTECH	595.05	615.5	3.44	769500	868500	12.87
TCS	2494.65	2538.35	1.75	7155250	8016750	12.04
SREINFRA	113.9	114.6	0.61	8350000	9220000	10.42

### TOP 10 OPEN INTEREST LOSER FOR THE SESSION

SCRIPS	CP AS ON 11/10/2017	CP AS ON 12/10/2017	Change (%)	OI AS ON 11/10/2017	OI AS ON 12/10/2017	Change (%)
OFSS	3512.1	3596	2.39	59250	55050	-7.09
ARVIND	384.65	394.2	2.48	6270000	5834000	-6.95
HEXAWARE	268.45	276.1	2.85	2487000	2364000	-4.95
CGPOWER	77.95	78.9	1.22	28500000	27168000	-4.67
BEL	166	169.6	2.17	15478650	14869800	-3.93
APOLLOTYRE	238.15	242.4	1.78	15705000	15090000	-3.92
CEATLTD	1719.6	1738.25	1.08	1639400	1576400	-3.84
M&M	1320.6	1342.6	1.67	4952000	4764500	-3.79
MGL	1146.8	1182.9	3.15	735600	708000	-3.75
CHENNPETRO	426.2	429.75	0.83	2304000	2232000	-3.13

## Technical Trend

### Pivot Report– Nifty 50

Symbol	PClose	Support3	Support2	Support1	Pivot	Resist1	Resist2	Resist3
ADANIPTS	396.9	383.8	387.0	391.9	<b>395.1</b>	400.1	403.3	408.2
AMBUJACEM	277.7	271.6	274.1	275.9	<b>278.4</b>	280.2	282.7	284.5
ASIANPAINT	1163.0	1142.7	1148.4	1155.7	<b>1161.3</b>	1168.6	1174.3	1181.6
AUOPHARMA	735.3	719.6	725.0	730.2	<b>735.6</b>	740.8	746.2	751.4
AXISBANK	514.6	495.6	499.9	507.2	<b>511.5</b>	518.8	523.1	530.4
BAJAJ-AUTO	3134.7	3075.4	3090.5	3112.6	<b>3127.8</b>	3149.9	3165.0	3187.1
BAJFINANCE	1950.8	1926.3	1934.7	1942.7	<b>1951.1</b>	1959.1	1967.5	1975.5
BHARTIARTL	384.6	364.7	369.8	377.2	<b>382.4</b>	389.8	394.9	402.3
BOSCHLTD	21226.6	20844.4	20949.8	21088.2	<b>21193.6</b>	21332.0	21437.4	21575.8
BPCL	482.3	469.4	472.7	477.5	<b>480.9</b>	485.7	489.0	493.8
CIPLA	590.2	578.1	581.8	586.0	<b>589.7</b>	593.9	597.6	601.8
COALINDIA	285.7	277.7	279.5	282.6	<b>284.4</b>	287.5	289.3	292.4
DRREDDY	2411.4	2368.6	2385.1	2398.2	<b>2414.7</b>	2427.9	2444.4	2457.5
EICHERMOT	31545.2	30687.6	31070.0	31307.6	<b>31689.9</b>	31927.5	32309.9	32547.5
GAIL	444.6	435.9	439.3	442.0	<b>445.4</b>	448.1	451.5	454.2
HCLTECH	899.6	872.2	884.7	892.1	<b>904.6</b>	912.0	924.5	931.9
HDFC	1744.8	1725.7	1731.5	1738.1	<b>1743.9</b>	1750.5	1756.3	1762.9
HDFCBANK	1802.7	1769.6	1781.1	1791.9	<b>1803.4</b>	1814.2	1825.7	1836.5
HEROMOTOCO	3695.3	3604.4	3632.8	3664.0	<b>3692.4</b>	3723.6	3752.0	3783.2
HINDALCO	252.1	243.5	245.8	248.9	<b>251.2</b>	254.3	256.6	259.7
HINDPETRO	436.6	426.0	430.3	433.4	<b>437.7</b>	440.8	445.1	448.2
HINDUNILVR	1209.2	1174.0	1189.5	1199.4	<b>1214.9</b>	1224.7	1240.2	1250.1
IBULHSGFIN	1281.9	1248.2	1257.3	1269.6	<b>1278.6</b>	1290.9	1300.0	1312.3
ICICIBANK	269.8	264.5	266.8	268.3	<b>270.7</b>	272.2	274.5	276.0
INDUSINDBK	1725.2	1691.6	1700.0	1712.6	<b>1720.9</b>	1733.5	1741.9	1754.5
INFRATEL	399.9	391.3	394.9	397.4	<b>401.0</b>	403.4	407.0	409.5
INFY	935.5	919.6	924.6	930.0	<b>935.0</b>	940.4	945.4	950.8
IOC	410.9	400.8	405.1	408.0	<b>412.3</b>	415.1	419.4	422.3
ITC	266.2	262.2	263.7	264.9	<b>266.4</b>	267.7	269.2	270.4
KOTAKBANK	1055.7	1029.8	1037.1	1046.4	<b>1053.7</b>	1063.0	1070.3	1079.6
LT	1142.7	1118.6	1128.4	1135.6	<b>1145.4</b>	1152.6	1162.4	1169.6
LUPIN	1062.0	1016.2	1028.9	1045.5	<b>1058.2</b>	1074.8	1087.5	1104.1
M&M	1305.1	1280.0	1290.6	1297.8	<b>1308.4</b>	1315.7	1326.3	1333.5
MARUTI	7893.7	7824.8	7855.0	7874.4	<b>7904.6</b>	7924.0	7954.2	7973.6
NTPC	175.5	173.0	173.7	174.6	<b>175.2</b>	176.1	176.8	177.7
ONGC	170.4	165.9	167.5	168.9	<b>170.5</b>	172.0	173.6	175.0
POWERGRID	204.8	196.8	198.9	201.8	<b>203.9</b>	206.8	208.9	211.8
RELIANCE	843.2	817.4	824.2	833.7	<b>840.5</b>	850.0	856.8	866.3
SBIN	257.0	253.2	254.5	255.7	<b>257.0</b>	258.2	259.5	260.7
SUNPHARMA	527.2	515.0	520.5	523.9	<b>529.4</b>	532.8	538.3	541.7
TATAMOTORS	423.6	412.9	417.1	420.4	<b>424.6</b>	427.9	432.1	435.4
TATASTEEL	690.8	663.5	674.3	682.6	<b>693.4</b>	701.6	712.4	720.7
TCS	2459.3	2431.7	2441.5	2450.4	<b>2460.2</b>	2469.1	2478.9	2487.8
TECHM	466.3	456.1	458.8	462.5	<b>465.2</b>	468.9	471.6	475.3
ULTRACEMCO	3970.8	3918.7	3938.1	3954.5	<b>3973.9</b>	3990.3	4009.7	4026.1
UPL	819.6	769.2	781.0	800.3	<b>812.2</b>	831.5	843.3	862.6
VEDL	321.0	310.1	314.2	317.6	<b>321.8</b>	325.2	329.3	332.7
WIPRO	287.0	281.9	283.5	285.2	<b>286.8</b>	288.5	290.1	291.8
YESBANK	372.9	368.3	369.6	371.3	<b>372.6</b>	374.3	375.6	377.3
ZEEL	522.9	506.2	512.0	517.4	<b>523.2</b>	528.7	534.5	539.9

**Disclaimer Appendix****Analyst s holding in the Stock : Nil****Analyst s Certification:**

We analysts and the authors of this report, hereby certify that all of the views expressed in this research report accurately reflect our personal views about any and all of the subject issuer s or securities. We also certify that no part of our compensation was, is, or will be directly or indirectly related to the specific recommendation s or view s in this report. Analysts aren't registered as research analysts by FINRA and might not be an associated person of the BP Equities Pvt. Ltd. Institutional Equities.

**General Disclaimer**

This report has been prepared by the research department of BP EQUITIES Pvt. Ltd, is for information purposes only. This report is not construed as an offer to sell or the solicitation of an offer to buy or sell any security in any jurisdiction where such an offer or solicitation would be illegal.

BP EQUITIES Pvt. Ltd have exercised due diligence in checking the correctness and authenticity of the information contained herein, so far as it relates to current and historical information, but do not guarantee its accuracy or completeness. The opinions expressed are our current opinions as of the date appearing in the material and may be subject to change from time to time. Prospective investors are cautioned that any forward looking statement are not predictions and are subject to change without prior notice.

Recipients of this material should rely on their own investigations and take their own professional advice. BP EQUITIES Pvt. Ltd or any of its affiliates or employees shall not be in any way responsible for any loss or damage that may arise to any person from any inadvertent error in the information contained in this report. BP EQUITIES Pvt. Ltd. or any of its affiliates or employees do not provide, at any time, any express or implied warranty of any kind, regarding any matter pertaining to this report, including without limitation the implied warranties of merchantability, fitness for a particular purpose, and non-infringement. The recipients of this report should rely on their own investigations.

BP EQUITIES Pvt. Ltd and/or its affiliates and/or employees may have interests/ positions, financial or otherwise in the securities mentioned in this report. Opinions expressed are our current opinions as of the date appearing on this material only. While we endeavor to update on a reasonable basis the information discussed in this material, there may be regulatory, compliance, or other reasons that prevent us from doing so.

This report is not directed to or intended for display, downloading, printing, reproducing or for distribution to or use by any person in any locality, state and country or other jurisdiction where such distribution, publication or use would be contrary to the law or regulation or would subject to BP EQUITIES Pvt. Ltd or any of its affiliates to any registration or licensing requirement within such jurisdiction.

**Corporate Office:**

4th floor,  
Rustom Bldg,  
29, Veer Nariman Road, Fort,  
Mumbai-400001  
Phone- +91 22 6159 6464  
Fax-+91 22 6159 6160  
Website- [www.bpwealth.com](http://www.bpwealth.com)

**Registered Office:**

24/26, 1st Floor, Cama Building,  
Dalal street, Fort,  
Mumbai-400001  
  
BP Equities Pvt. Ltd.  
CIN No: U67120MH1997PTC107392