

Technical Trend

INTRADAY TRADER'S PICKS

Sr.No.	STOCK	CLOSE	S1	S2	S3	R1	R2	R3	RECOMMENDATION
1	JKIL	211.90	210	207	204	217	220	223	BUY ABOVE 213.5
2	IDFCBANK	58.90	58	56.2	55	60.4	61.6	62.8	BUY ABOVE 59.2
3	NDTV	57.10	57	56	55	60	61	62	BUY ABOVE 58.5
4	SUNPHARMA	503.35	496	489	482	518	525	532	BUY ABOVE 507
5	TATASTEEL	679.65	668	661	654	682	689	696	SELL BELOW 675

Technical Trend

DERIVATIVES

INDICES SNAPSHOT

SCRIPS	CP AS ON 12/09/2017	CP AS ON 13/09/2017	Change (%)	OI AS ON 12/09/2017	OI AS ON 13/09/2017	Change (%)
BANKNIFTY	24782.75	24821.85	0.16	2610360	2497880	-4.31
NIFTY	10107.9	10091.45	-0.16	20860050	21515925	3.14
NIFTYIT	10475	10479	0.04	37050	33300	-10.12

Derivative Highlights

- ⇒ Nifty Future closed with a premium of 20 points.
- ⇒ Nifty Future Open Interest increased by 3.14%. BankNifty Future Open Interest decreased by 4.31%.
- ⇒ Nifty PCR - OI increased from 1.51 to 1.52, Nifty PCR - Vol decreased from 1.42 to 1.10
- ⇒ FII Sold Rs 826.77 crore while DII Bought Rs. 725.90 crore in the Cash Segment. FII Sold Rs. 531.77 crore in Index Futures and Sold Rs. 92.61 crore in index options, while in Future they Bought Rs. 62.92 crore and Bought Rs 115.78 crore in stock options
- ⇒ Among Index Option space, Highest Open Interest concentration was seen in 9900 & 9700 Strike price among the PE options. Where as among CE Options Highest Open Interest Concentration was seen in 10200 & 10000 Strike price.
- ⇒ Highest Open Interest Build Up among the PE options was seen in 10100 & 10000 Strike price. Among CE options highest build up was seen in 10300 & 10400 Strike price.

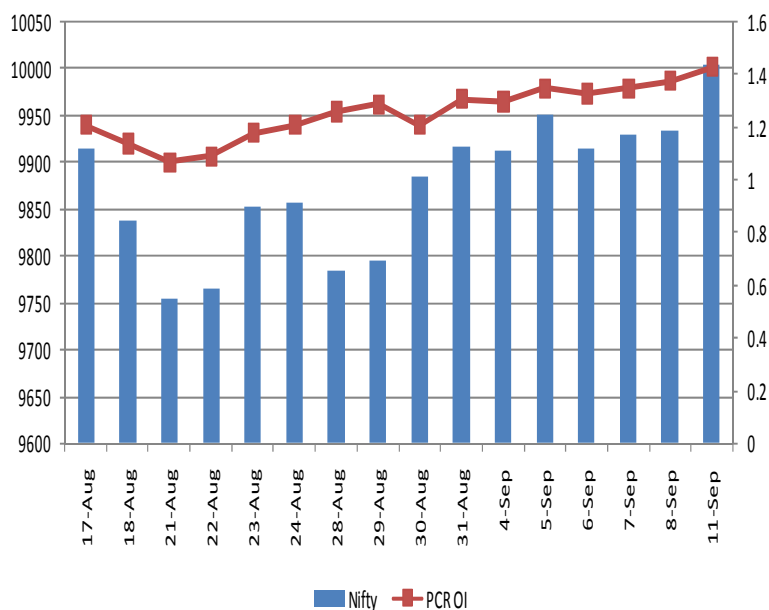
OI Concentration

PUT OPTION		CALL OPTION	
Strike Price	Open Interest	Strike Price	Open Interest
9900	6316050	10200	3836025
9700	4935750	10000	3734850
9800	4535025	10100	3560325
10000	4403475	10300	2515950
9500	3384450	10500	2232300

Highest Change in OI

PUT OPTION		CALL OPTION	
Strike Price	Change in OI	Strike Price	Change in OI
10100	1714125	10300	381225
10000	1063650	10400	183375
9900	715575	10200	179250
10050	512025	10250	96825
10200	353325	10700	78525

Nifty Future Price V/S PCR-OI



Technical Trend

Stock Analysis

Long Build-up	Long Unwinding	Short Build-up	Short Covering
AJANTPHARM	APOLLOTYRE	BAJAJ-AUTO	ANDHRABANK
BANKINDIA	CASTROLIND	BPCL	BANKBARODA
DIVISLAB	GSFC	CAPF	CUMMINSIND
HEXAWARE	L&TFH	ENGINERSIN	IDFCBANK
JSWENERGY	MRPL	HEROMOTOCO	MCDOWELL-N
SUNPHARMA	TVSMOTOR	JUSTDIAL	RELIANCE

STATISTICS

Highest Premium

SCRIPS	Premium %	Price change %
JPASSOCIAT	0.91	0.2
GMRINFRA	0.86	0.3
RCOM	0.66	2.5
ICIL	0.65	1.4
PEL	0.60	2.3

Highest Discount

SCRIPS	Premium %	Price change %
PTC	-2.34	0.9
NIITTECH	-2.07	1.3
OIL	-1.51	0.1
RELINFRA	-1.34	1.3
RECLTD	-1.12	0.0

TOP 5 VOLUME GAINER FOR THE SESSION

SCRIPS	CP AS ON 12/09/2017	CP AS ON 13/09/2017	Change (%)	Vol AS ON 12/09/2017	Vol AS ON 13/09/2017	Change (%)
WOCKPHARMA	620.9	646.95	4.20	2861	19090	5.67
JSWENERGY	77.15	77.4	0.32	1777	10245	4.77
RELIANCE	825.5	850.1	2.98	6557	31480	3.80
RECLTD	162.7	168.95	3.84	1564	7096	3.54
TATAPOWER	81.3	84.85	4.37	1452	6277	3.32

TOP 5 VOLUME LOSER FOR THE SESSION

SCRIPS	CP AS ON 12/09/2017	CP AS ON 13/09/2017	Change (%)	Vol AS ON 12/09/2017	Vol AS ON 13/09/2017	Change (%)
NCC	90.65	89.1	-1.71	4553	1518	-0.67
TATASTEEL	685.9	682.1	-0.55	19914	6970	-0.65
DHFL	558.7	555.45	-0.58	5174	2271	-0.56
MUTHOOTFIN	519.7	509.45	-1.97	3615	1597	-0.56
VOLTAS	564.05	551.7	-2.19	8261	3897	-0.53

Technical Trend

TOP 10 OPEN INTEREST GAINER FOR THE SESSION

SCRIPS	CP AS ON 12/09/2017	CP AS ON 13/09/2017	Change (%)	OI AS ON 12/09/2017	OI AS ON 13/09/2017	Change (%)
JSWENERGY	77.15	77.4	0.32	60367000	80631000	33.57
JUBLFOOD	1431.3	1324.3	-7.48	1957500	2491500	27.28
CONCOR	1394.55	1368.95	-1.84	1051250	1235625	17.54
TORNTPOWER	228.65	223.85	-2.10	6459000	7461000	15.51
BPCL	534.6	502.25	-6.05	13501800	15593400	15.49
DIVISLAB	797.2	822	3.11	8548800	9861600	15.36
APOLLOHOSP	1100.15	1074.35	-2.35	1343500	1539500	14.59
HEXAWARE	274.4	276.85	0.89	2334000	2655000	13.75
AJANTPHARM	1199.15	1206.65	0.63	612400	686400	12.08
CHOLAFIN	1195.35	1174.6	-1.74	443000	494500	11.63

TOP 10 OPEN INTEREST LOSER FOR THE SESSION

SCRIPS	CP AS ON 12/09/2017	CP AS ON 13/09/2017	Change (%)	OI AS ON 12/09/2017	OI AS ON 13/09/2017	Change (%)
IGL	1428.15	1395.9	-2.26	1116500	956450	-14.33
BHARATFORG	1231.4	1226.35	-0.41	4964400	4471800	-9.92
VOLTAS	564.05	551.7	-2.19	3240000	2940000	-9.26
TATAELXSI	1815.3	1817.85	0.14	1024800	942000	-8.08
GAIL	410.45	407.95	-0.61	11964000	11008000	-7.99
RAMCOCEM	744.05	746.9	0.38	582400	540000	-7.28
BATAINDIA	719.1	712.3	-0.95	2686200	2493700	-7.17
RECLTD	162.7	168.95	3.84	40476000	37896000	-6.37
PNB	141.9	143.25	0.95	27422500	25816000	-5.86
ASHOKLEY	118.6	117.85	-0.63	58450000	55265000	-5.45

Technical Trend

Pivot Report– Nifty 50

Symbol	PClose	Support3	Support2	Support1	Pivot	Resist1	Resist2	Resist3
ACC	1843.8	1799.6	1818.9	1831.3	1850.6	1863.1	1882.4	1894.8
ADANIPTS	390.0	377.0	381.5	385.8	390.3	394.5	399.0	403.3
AMBUJACEM	285.8	274.8	279.3	282.5	287.0	290.3	294.8	298.0
ASIANPAINT	1255.0	1235.6	1242.3	1248.6	1255.3	1261.6	1268.3	1274.6
AUOPHARMA	760.0	729.9	740.6	750.3	761.0	770.7	781.4	791.1
AXISBANK	499.3	483.8	489.4	494.4	500.0	504.9	510.5	515.5
BAJAJ-AUTO	2935.0	2858.0	2889.0	2912.0	2943.0	2966.0	2997.0	3020.0
BANKBARODA	143.8	137.3	139.5	141.6	143.8	145.9	148.1	150.2
BHARTIARTL	401.7	390.5	395.2	398.4	403.1	406.3	411.0	414.2
BOSCHLTD	22012.4	21665.7	21808.3	21910.4	22053.0	22155.1	22297.7	22399.8
BPCL	500.2	427.9	458.5	479.3	509.9	530.7	561.3	582.1
CIPLA	554.4	541.1	546.8	550.6	556.4	560.2	565.9	569.7
COALINDIA	256.4	249.8	252.5	254.4	257.1	259.0	261.7	263.6
DRREDDY	2217.4	2122.8	2146.0	2181.7	2204.8	2240.5	2263.7	2299.4
EICHERMOT	32226.4	31482.4	31782.3	32004.4	32304.3	32526.4	32826.3	33048.4
GAIL	408.0	385.3	392.7	400.3	407.7	415.3	422.7	430.3
HCLTECH	871.3	850.4	856.0	863.7	869.3	877.0	882.6	890.3
HDFC	1778.1	1741.8	1757.7	1767.9	1783.8	1794.0	1809.9	1820.1
HDFCBANK	1841.9	1802.6	1813.3	1827.6	1838.3	1852.6	1863.3	1877.6
HERMOTOCO	3893.6	3765.7	3821.9	3857.7	3913.9	3949.7	4005.9	4041.7
HINDALCO	248.0	240.3	243.3	245.7	248.7	251.0	254.0	256.4
HINDUNILVR	1251.0	1230.6	1237.9	1244.4	1251.7	1258.2	1265.5	1272.0
IBULHSGFIN	1268.9	1231.7	1248.7	1258.8	1275.8	1285.9	1302.9	1313.0
ICICIBANK	292.0	289.0	290.1	291.1	292.2	293.1	294.2	295.2
INDUSINDBK	1744.8	1703.8	1720.1	1732.4	1748.7	1761.0	1777.3	1789.6
INFRATEL	370.7	358.6	362.5	366.6	370.5	374.5	378.4	382.5
INFY	883.8	874.0	877.5	880.6	884.1	887.2	890.7	893.8
IOC	416.0	368.5	388.3	402.1	421.9	435.7	455.5	469.3
ITC	271.5	262.6	266.8	269.1	273.3	275.7	279.9	282.2
KOTAKBANK	1020.2	1006.0	1010.8	1015.5	1020.3	1025.0	1029.8	1034.5
LT	1223.4	1189.4	1198.5	1210.9	1220.0	1232.4	1241.5	1253.9
LUPIN	992.4	939.6	956.8	974.6	991.8	1009.6	1026.8	1044.6
M&M	1307.4	1283.2	1293.1	1300.2	1310.1	1317.3	1327.2	1334.3
MARUTI	8122.6	7982.0	8041.1	8081.8	8140.9	8181.7	8240.8	8281.5
NTPC	169.0	165.1	166.9	167.9	169.7	170.7	172.5	173.5
ONGC	161.1	158.4	159.6	160.3	161.6	162.3	163.5	164.2
POWERGRID	213.8	209.4	211.2	212.5	214.3	215.6	217.4	218.7
RELIANCE	849.0	789.5	805.7	827.4	843.6	865.3	881.5	903.2
SBIN	273.4	267.6	270.1	271.7	274.2	275.8	278.3	279.9
SUNPHARMA	503.4	454.7	467.3	485.3	497.9	515.9	528.5	546.5
TATAMOTORS	389.7	379.8	383.5	386.6	390.3	393.3	397.0	400.1
TATAMTRDVR	220.1	213.1	216.0	218.1	221.0	223.1	226.0	228.1
TATAPOWER	84.8	80.1	81.8	83.3	85.0	86.5	88.2	89.7
TATASTEEL	679.7	667.5	671.6	675.6	679.7	683.8	687.9	691.9
TCS	2489.2	2409.3	2442.2	2465.7	2498.7	2522.2	2555.1	2578.6
TECHM	440.8	417.8	427.5	434.2	443.9	450.6	460.3	467.0
ULTRACEMCO	4184.9	4110.9	4142.5	4163.7	4195.3	4216.5	4248.1	4269.3
VEDL	327.1	317.2	321.2	324.2	328.2	331.2	335.2	338.2
WIPRO	295.9	289.8	292.6	294.2	297.0	298.6	301.4	303.0
YESBANK	1839.0	1797.7	1815.1	1827.1	1844.5	1856.5	1873.9	1885.9
ZEEL	532.7	520.5	524.2	528.5	532.2	536.5	540.2	544.5



BP WEALTH

Technical Research Desk

Tel: +91 22 61596173

Institutional Sales Desk

Tel: +91 22 61596403/04/05

Disclaimer Appendix

Analyst s holding in the Stock : Nil

Analyst s Certification:

We analysts and the authors of this report, hereby certify that all of the views expressed in this research report accurately reflect our personal views about any and all of the subject issuer s or securities. We also certify that no part of our compensation was, is, or will be directly or indirectly related to the specific recommendation s or view s in this report. Analysts aren't registered as research analysts by FINRA and might not be an associated person of the BP Equities Pvt. Ltd. Institutional Equities.

General Disclaimer

This report has been prepared by the research department of BP EQUITIES Pvt. Ltd, is for information purposes only. This report is not construed as an offer to sell or the solicitation of an offer to buy or sell any security in any jurisdiction where such an offer or solicitation would be illegal.

BP EQUITIES Pvt. Ltd have exercised due diligence in checking the correctness and authenticity of the information contained herein, so far as it relates to current and historical information, but do not guarantee its accuracy or completeness. The opinions expressed are our current opinions as of the date appearing in the material and may be subject to change from time to time. Prospective investors are cautioned that any forward looking statement are not predictions and are subject to change without prior notice.

Recipients of this material should rely on their own investigations and take their own professional advice. BP EQUITIES Pvt. Ltd or any of its affiliates or employees shall not be in any way responsible for any loss or damage that may arise to any person from any inadvertent error in the information contained in this report. BP EQUITIES Pvt. Ltd. or any of its affiliates or employees do not provide, at any time, any express or implied warranty of any kind, regarding any matter pertaining to this report, including without limitation the implied warranties of merchantability, fitness for a particular purpose, and non-infringement. The recipients of this report should rely on their own investigations.

BP EQUITIES Pvt. Ltd and/or its affiliates and/or employees may have interests/ positions, financial or otherwise in the securities mentioned in this report. Opinions expressed are our current opinions as of the date appearing on this material only. While we endeavor to update on a reasonable basis the information discussed in this material, there may be regulatory, compliance, or other reasons that prevent us from doing so.

This report is not directed to or intended for display, downloading, printing, reproducing or for distribution to or use by any person in any locality, state and country or other jurisdiction where such distribution, publication or use would be contrary to the law or regulation or would subject to BP EQUITIES Pvt. Ltd or any of its affiliates to any registration or licensing requirement within such jurisdiction.

Corporate Office:

4th floor,
Rustom Bldg,
29, Veer Nariman Road, Fort,
Mumbai-400001
Phone- +91 22 6159 6464
Fax-+91 22 6159 6160
Website- www.bpwealth.com

Registered Office:

24/26, 1st Floor, Cama Building,
Dalal street, Fort,
Mumbai-400001
BP Equities Pvt. Ltd.
CIN No: U67120MH1997PTC107392