

NIFTY FUT : IMMEDIATE RESISTANCE AT 9900



Nifty futures closed higher by 0.12% at 9900. Index opened gap up but failed to sustain the gains and closed flat. Index has surpassed its resistance of 9700 and saw good buying followup which is a bullish signal for short term trend. Going ahead till index maintains above 9820 it is expected to continue its up move towards 9980-10080 in short term while support past 9820 comes at 9770-9740.

Intraday Nifty Future Resistance—9900/9940/9980 Support—9820/9770/9740

BANK NIFTY FUT : IMMEDIATE RESISTANCE AT 24000



Bank Nifty futures closed 0.41% higher at 23977. Index formed Dragonfly Doji, occurrence of such candlestick after an up move suggests lack of buying interest at higher levels. Going ahead till index maintains above 23700 it is expected to continue its up move towards 24250-24450 while support past 23700 comes at 23550-23450.

Intraday Bank Nifty Future Resistance—24000/24100/24250 Support—23800/23700/23550

Technical Trend

INTRADAY TRADER'S PICKS

Sr.No.	STOCK	CLOSE	S1	S2	S3	R1	R2	R3	RECOMMENDATION
1	AJANTPHARM	1493	1476	1462	1447	1524	1540	1555	BUY ABOVE 1500
2	ABFRL	182.35	180	177	174	188	191	194	BUY ABOVE 184
3	CADILAHC	530.05	526	519	512	540	547	554	BUY ABOVE 533
4	EIDPARRY	314.5	311	306	301	321	326	331	BUY ABOVE 316
5	LICHSGFIN	742.30	736	727	718	754	763	772	BUY ABOVE 745

Technical Trend

DERIVATIVES

INDICES SNAPSHOT

SCRIPS	CP AS ON 13/07/2017	CP AS ON 14/07/2017	Change (%)	OI AS ON 13/07/2017	OI AS ON 14/07/2017	Change (%)
BANKNIFTY	23879.4	23977.4	0.41	2749720	2790800	1.49
NIFTY	9887.5	9899.55	0.12	24527925	24489375	-0.16
NIFTYIT	10416	10331	-0.82	36200	37800	4.42

Derivative Highlights

- ⇒ Nifty Future closed with a premium of 13 point v/s a discount of 4 points in the previous session.
- ⇒ Nifty Future Open Interest decreased by 0.16%. BankNifty Future Open Interest increased by 1.49%.
- ⇒ Nifty PCR - OI increased from 1.46 to 1.50, Nifty PCR - Vol increased from 1.30 to 1.34
- ⇒ FII Bought Rs 673.56 crore while DII Sold Rs. 136.27 crore in the Cash Segment. FII Sold Rs. 310.89 crore in Index Futures and Sold Rs. 519.72 crore in index options, while in Future they Bought Rs. 47.17 crore and Bought Rs 44.84 crore in stock options
- ⇒ Among Index Option space, Highest Open Interest concentration was seen in 9600 & 9500 Strike price among the PE options. Where as among CE Options Highest Open Interest Concentration was seen in 10000 & 9800 Strike price.
- ⇒ Highest Open Interest Build Up among the PE options was seen in 9700 & 9800 Strike price. Among CE options highest build up was seen in 8600 & 8700 Strike price.

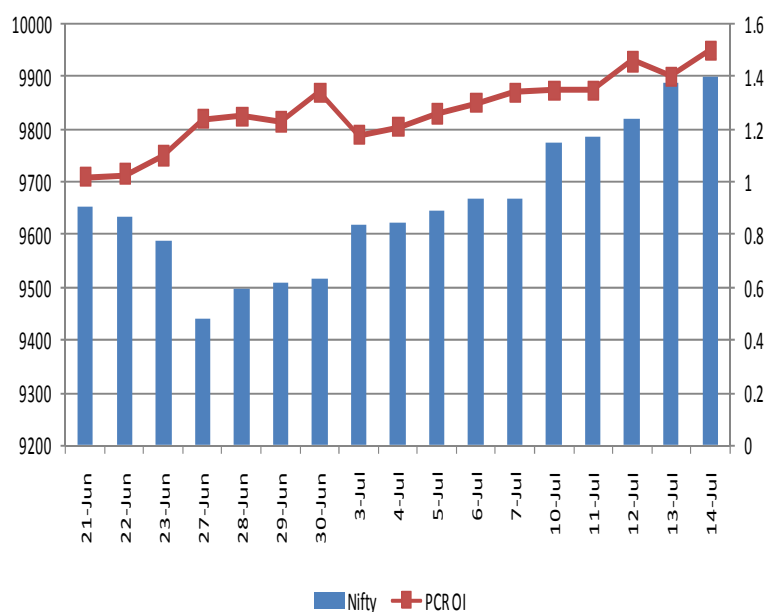
OI Concentration

PUT OPTION		CALL OPTION	
Strike Price	Open Interest	Strike Price	Open Interest
9600	6707400	10000	4306500
9500	5632350	9800	4183125
9700	5229375	9700	3176850
9400	4934775	9900	3169875
9800	4038750	9600	2185650

Highest Change in OI

PUT OPTION		CALL OPTION	
Strike Price	Change in OI	Strike Price	Change in OI
9700	868800	8600	345900
9800	834450	8700	344475
9400	117375	9900	207975
9500	80775	10000	95850
10100	63600	10100	77175

Nifty Future Price V/S PCR-OI



Technical Trend

Stock Analysis

Long Build-up	Long Unwinding	Short Build-up	Short Covering
AUROPHARMA	BALRAMCHIN	ASHOKLEY	BAJAJ-AUTO
BHARTIARTL	HINDZINC	COALINDIA	BANKBARODA
DCBBANK	IGL	FORTIS	DRREDDY
HINDUNILVR	INFY	HCLTECH	M&MFIN
M&M	SAIL	JUSTDIAL	PNB
ULTRACEMCO	TECHM	LUPIN	RELINFRA

STATISTICS

Highest Premium

SCRIPS	Premium %	Price change %
RCOM	0.62	1.67
ANDHRABANK	0.61	0.44
IFCI	0.58	-1.34
GMRINFRA	0.56	1.11
GSFC	0.56	0.32

Highest Discount

SCRIPS	Premium %	Price change %
RBLBANK	-1.38	-1.12
MRPL	-1.36	-1.54
CUMMINSIND	-0.75	0.43
IDFCBANK	-0.72	-0.16
INFRATEL	-0.66	1.80

TOP 5 VOLUME GAINER FOR THE SESSION

SCRIPS	CP AS ON 13/07/2017	CP AS ON 14/07/2017	Change (%)	OI AS ON 13/07/2017	OI AS ON 14/07/2017	Change (%)
JUBLFOOD	1117.35	1170.2	4.73	1917	8586	348%
AUROPHARMA	707.75	747.05	5.55	7317	22315	205%
INDIANB	305.05	317.6	4.11	1210	3689	205%
GAIL	372.75	390.2	4.68	2598	7316	182%
MFSL	584.95	600.95	2.74	1670	4482	168%

TOP 5 VOLUME LOSER FOR THE SESSION

SCRIPS	CP AS ON 13/07/2017	CP AS ON 14/07/2017	Change (%)	OI AS ON 13/07/2017	OI AS ON 14/07/2017	Change (%)
UJJIVAN	351.55	347.35	-1.19	9921	1339	-87%
ITC	338.8	338.1	-0.21	11969	4130	-65%
JINDALSTEL	138.9	137.85	-0.76	5989	2363	-61%
CAPF	753.6	751.5	-0.28	6658	2721	-59%
SINTEX	34.2	32.95	-3.65	15142	6289	-58%

Technical Trend

TOP 10 OPEN INTEREST GAINER FOR THE SESSION

SCRIPS	CP AS ON 13/07/2017	CP AS ON 14/07/2017	Change (%)	OI AS ON 13/07/2017	OI AS ON 14/07/2017	Change (%)
CHENNPETRO	393.85	401.9	2.04	892500	1225500	37.31
ORIENTBANK	149.9	149.55	-0.23	17292000	20340000	17.63
NATIONALUM	72.95	70.2	-3.77	7976000	9224000	15.65
MANAPPURAM	98.85	101.55	2.73	15288000	17610000	15.19
DCBBANK	199.25	202.75	1.76	7542000	8568000	13.60
SREINFRA	114.4	114.55	0.13	4225000	4715000	11.60
HEXAWARE	247.2	243	-1.70	2244000	2478000	10.43
MINDTREE	515.85	516.9	0.20	3074400	3340800	8.67
GMRINFRA	18.05	18.1	0.28	323595000	348255000	7.62
OIL	266.6	270.55	1.48	2778116	2986588	7.50

TOP 10 OPEN INTEREST LOSER FOR THE SESSION

SCRIPS	CP AS ON 13/07/2017	CP AS ON 14/07/2017	Change (%)	OI AS ON 13/07/2017	OI AS ON 14/07/2017	Change (%)
HINDALCO	205.35	206.1	0.37	49094500	45545500	-7.23
UJJIVAN	351.55	347.35	-1.19	8545200	7981200	-6.60
MUTHOOTFIN	471.4	474.3	0.62	2529000	2371500	-6.23
BIOCON	367.1	398.65	8.59	13005000	12346200	-5.07
EQUITAS	170.45	170.4	-0.03	8883200	8451200	-4.86
HINDZINC	276.7	274.3	-0.87	13212800	12576000	-4.82
MARUTI	7568.4	7559.55	-0.12	1973100	1892550	-4.08
KAJARIACER	680.15	680.8	0.10	457600	440000	-3.85
KSCL	653.1	647.6	-0.84	5449500	5244000	-3.77
CIPLA	544	549.95	1.09	6660000	6411000	-3.74

Technical Trend

Pivot Report– Nifty 50

Symbol	PClose	Support3	Support2	Support1	Pivot	Resist1	Resist2	Resist3
ACC	1703.6	1657.2	1673.6	1688.6	1705.0	1719.9	1736.3	1751.3
ADANIPTS	376.0	367.2	369.7	372.8	375.4	378.5	381.0	384.1
AMBUJACEM	263.2	257.4	258.9	261.0	262.5	264.6	266.1	268.2
ASIANPAINT	1125.5	1093.4	1107.3	1116.4	1130.3	1139.4	1153.3	1162.4
AUOPHARMA	705.2	676.8	684.0	694.6	701.8	712.4	719.6	730.2
AXISBANK	511.9	498.8	503.4	507.7	512.3	516.5	521.1	525.4
BAJAJ-AUTO	2789.8	2751.6	2766.0	2777.9	2792.3	2804.2	2818.6	2830.5
BANKBARODA	163.4	157.9	160.0	161.7	163.7	165.4	167.5	169.2
BHARTIARTL	403.2	393.4	396.1	399.6	402.3	405.8	408.5	412.0
BOSCHLTD	24253.1	23731.6	23927.0	24090.0	24285.4	24448.4	24643.8	24806.8
BPCL	458.6	442.0	448.2	453.4	459.6	464.7	470.9	476.1
CIPLA	543.7	534.6	536.7	540.2	542.3	545.8	547.9	551.4
COALINDIA	253.7	247.8	249.8	251.7	253.8	255.7	257.7	259.6
DRREDDY	2694.0	2641.3	2662.2	2678.1	2698.9	2714.8	2735.7	2751.6
EICHERMOT	28056.0	27518.2	27763.4	27909.7	28154.8	28301.1	28546.3	28692.6
GAIL	372.1	363.0	365.4	368.7	371.1	374.5	376.9	380.2
HCLTECH	858.6	846.4	850.9	854.8	859.3	863.2	867.7	871.6
HDFC	1641.7	1603.5	1614.3	1628.0	1638.9	1652.6	1663.5	1677.2
HDFCBANK	1683.6	1664.1	1671.9	1677.7	1685.5	1691.4	1699.2	1705.0
HEROMOTOCO	3751.0	3695.1	3713.1	3732.0	3750.0	3768.9	3786.9	3805.8
HINDALCO	204.7	191.8	194.8	199.7	202.7	207.6	210.6	215.5
HINDUNILVR	1134.7	1121.6	1126.3	1130.5	1135.2	1139.4	1144.1	1148.3
IBULHSGFIN	1129.2	1094.2	1103.6	1116.4	1125.8	1138.6	1148.0	1160.8
ICICIBANK	297.9	291.0	293.0	295.5	297.5	299.9	301.9	304.4
INDUSINDBK	1579.9	1542.1	1551.7	1565.8	1575.4	1589.5	1599.1	1613.2
INFRATEL	410.6	390.0	398.6	404.6	413.3	419.3	427.9	433.9
INFY	977.1	946.9	955.5	966.3	974.9	985.6	994.2	1005.0
IOC	381.0	355.3	366.5	373.7	384.9	392.1	403.3	410.5
ITC	338.8	324.8	327.9	333.3	336.4	341.8	344.9	350.3
KOTAKBANK	962.1	945.7	951.2	956.7	962.2	967.7	973.2	978.7
LT	1175.1	1140.1	1150.0	1162.6	1172.5	1185.1	1195.0	1207.6
LUPIN	1142.1	1122.9	1130.7	1136.4	1144.2	1149.9	1157.7	1163.4
M&M	1370.4	1351.7	1358.9	1364.6	1371.8	1377.6	1384.8	1390.5
MARUTI	7567.6	7387.6	7426.4	7497.0	7535.7	7606.3	7645.1	7715.7
NTPC	163.9	160.2	161.8	162.9	164.5	165.6	167.2	168.3
ONGC	158.9	151.5	155.0	157.0	160.5	162.5	166.0	168.0
POWERGRID	215.1	211.5	213.0	214.0	215.5	216.6	218.1	219.1
RELIANCE	1522.1	1491.7	1498.9	1510.5	1517.8	1529.4	1536.6	1548.2
SBIN	288.8	283.4	285.0	286.9	288.4	290.3	291.9	293.8
SUNPHARMA	569.3	550.8	555.4	562.4	567.0	573.9	578.5	585.5
TATAMOTORS	459.1	446.0	450.8	454.9	459.7	463.9	468.7	472.8
TATAMTRDVR	276.5	271.1	272.8	274.7	276.4	278.3	280.0	281.9
TATAPOWER	83.3	81.8	82.4	82.8	83.4	83.8	84.4	84.8
TATASTEEL	564.0	555.0	557.6	560.8	563.4	566.6	569.2	572.4
TCS	2446.4	2379.3	2402.9	2424.7	2448.3	2470.1	2493.7	2515.5
TECHM	389.3	383.7	385.5	387.4	389.2	391.1	392.9	394.8
ULTRACEMCO	4198.7	4138.0	4161.8	4180.3	4204.1	4222.6	4246.4	4264.9
VEDL	263.1	251.5	254.1	258.6	261.2	265.7	268.3	272.8
WIPRO	264.1	257.3	259.4	261.7	263.8	266.1	268.2	270.5
YESBANK	1582.0	1467.3	1492.7	1537.3	1562.7	1607.3	1632.7	1677.3
ZEEL	517.0	502.1	505.9	511.5	515.3	520.9	524.7	530.3

**Disclaimer Appendix****Analyst s holding in the Stock : Nil****Analyst s Certification:**

We analysts and the authors of this report, hereby certify that all of the views expressed in this research report accurately reflect our personal views about any and all of the subject issuer s or securities. We also certify that no part of our compensation was, is, or will be directly or indirectly related to the specific recommendation s or view s in this report. Analysts aren't registered as research analysts by FINRA and might not be an associated person of the BP Equities Pvt. Ltd. Institutional Equities.

General Disclaimer

This report has been prepared by the research department of BP EQUITIES Pvt. Ltd, is for information purposes only. This report is not construed as an offer to sell or the solicitation of an offer to buy or sell any security in any jurisdiction where such an offer or solicitation would be illegal.

BP EQUITIES Pvt. Ltd have exercised due diligence in checking the correctness and authenticity of the information contained herein, so far as it relates to current and historical information, but do not guarantee its accuracy or completeness. The opinions expressed are our current opinions as of the date appearing in the material and may be subject to change from time to time. Prospective investors are cautioned that any forward looking statement are not predictions and are subject to change without prior notice.

Recipients of this material should rely on their own investigations and take their own professional advice. BP EQUITIES Pvt. Ltd or any of its affiliates or employees shall not be in any way responsible for any loss or damage that may arise to any person from any inadvertent error in the information contained in this report. BP EQUITIES Pvt. Ltd. or any of its affiliates or employees do not provide, at any time, any express or implied warranty of any kind, regarding any matter pertaining to this report, including without limitation the implied warranties of merchantability, fitness for a particular purpose, and non-infringement. The recipients of this report should rely on their own investigations.

BP EQUITIES Pvt. Ltd and/or its affiliates and/or employees may have interests/ positions, financial or otherwise in the securities mentioned in this report. Opinions expressed are our current opinions as of the date appearing on this material only. While we endeavor to update on a reasonable basis the information discussed in this material, there may be regulatory, compliance, or other reasons that prevent us from doing so.

This report is not directed to or intended for display, downloading, printing, reproducing or for distribution to or use by any person in any locality, state and country or other jurisdiction where such distribution, publication or use would be contrary to the law or regulation or would subject to BP EQUITIES Pvt. Ltd or any of its affiliates to any registration or licensing requirement within such jurisdiction.

Corporate Office:

4th floor,
Rustom Bldg,
29, Veer Nariman Road, Fort,
Mumbai-400001
Phone- +91 22 6159 6464
Fax-+91 22 6159 6160
Website- www.bpwealth.com

Registered Office:

24/26, 1st Floor, Cama Building,
Dalal street, Fort,
Mumbai-400001
BP Equities Pvt. Ltd.
CIN No: U67120MH1997PTC107392