

Technical Trend

INTRADAY TRADER'S PICKS

Sr.No.	STOCK	CLOSE	S1	S2	S3	R1	R2	R3	RECOMMENDATION
1	CASTROLIND	378.8	375	370	365	386	391	396	BUY ABOVE 381
2	JBFIND	198.80	197	194	191	205	208	211	BUY ABOVE 201
3	LICHSGFIN	670.10	666	659	652	680	687	694	BUY ABOVE 673
4	MINDAIND	845.55	840	830	820	860	870	880	BUY ABOVE 850
5	MINDTREE	504.35	501	495	489	515	521	527	BUY ABOVE 508

Technical Trend

DERIVATIVES

INDICES SNAPSHOT

SCRIPS	CP AS ON 16/10/2017	CP AS ON 17/10/2017	Change (%)	OI AS ON 16/10/2017	OI AS ON 17/10/2017	Change (%)
BANKNIFTY	24743.25	24655	-0.36	2268680	2253760	-0.66
NIFTY	10255.95	10253.7	-0.02	28662075	28949625	1.00
NIFTYIT	10992	10954	-0.35	33400	33450	0.15

Derivative Highlights

- ⇒ Nifty Future closed with a premium of 19 points.
- ⇒ Nifty Future Open Interest increased by 1%. BankNifty Future Open Interest decreased by 0.66%.
- ⇒ Nifty PCR - OI decreased from 1.67 to 1.65, Nifty PCR - Vol increased from 1.08 to 1.15
- ⇒ FII Sold Rs 484.92 crore while DII Bought Rs. 89.03 crore in the Cash Segment. FII Bought Rs. 258.23 crore in Index Futures and Bought Rs.927.36 crore in index options, while in Future they Sold Rs. 8.40 crore and Sold Rs 87.95 crore in stock options
- ⇒ Among Index Option space, Highest Open Interest concentration was seen in 10000 & 9900 Strike price among the PE options. Where as among CE Options Highest Open Interest Concentration was seen in 10200 & 10300 Strike price.
- ⇒ Highest Open Interest Build Up among the PE options was seen in 10250 & 10200 Strike price. Among CE options highest build up was seen in 10600 & 10300 Strike price.

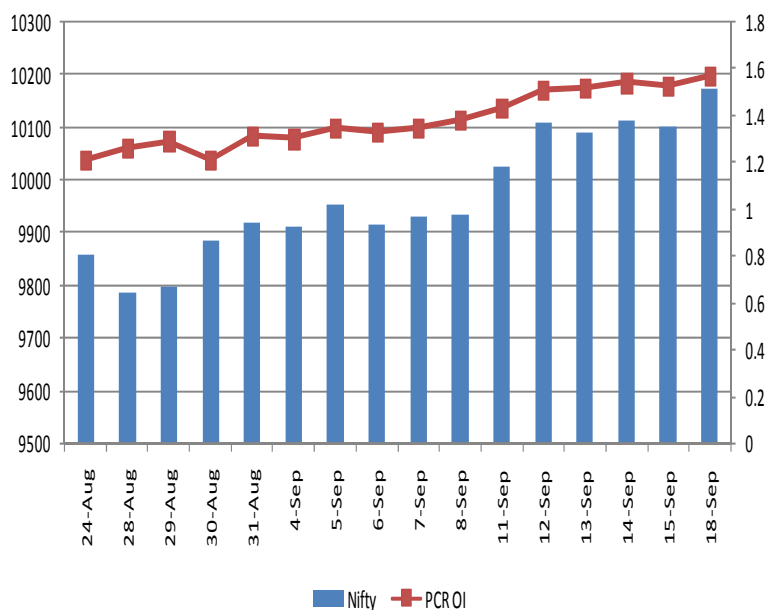
OI Concentration

PUT OPTION		CALL OPTION	
Strike Price	Open Interest	Strike Price	Open Interest
10000	7015650	10200	3349725
9900	5379300	10300	3139950
9800	4901550	10400	2805900
10200	4838400	10500	2675250
10100	4729800	10000	2450925

Highest Change in OI

PUT OPTION		CALL OPTION	
Strike Price	Change in OI	Strike Price	Change in OI
10250	372900	10600	273000
10200	324300	10300	188850
10300	126000	10250	171900
10050	58875	10200	101400
9100	32775	10500	76800

Nifty Future Price V/S PCR-OI



Technical Trend

Stock Analysis

Long Build-up	Long Unwinding	Short Build-up	Short Covering
ACC	SHREECEM	AXISBANK	AUROPHARMA
BAJAJ-AUTO	TVSMOTOR	BHARATFORG	BPCL
CENTURYTEX		DCBBANK	CIPLA
IBULHSGFIN		IGL	EXIDEIND
MCDOWELL-N		MOTHERSUMI	PETRONET
TATACHEM		WIPRO	ULTRACEMCO

STATISTICS

Highest Premium

SCRIPS	Premium %	Price change %
RCOM	0.88	0.00
RNAVAL	0.68	-0.58
GMRINFRA	0.62	0.00
CGPOWER	0.57	1.48
MRPL	0.54	1.06

Highest Discount

SCRIPS	Premium %	Price change %
COLPAL	-0.29	-2.03
PETRONET	-0.25	4.07
HDFCBANK	-0.17	-0.32
HAVELLS	-0.16	0.78
CIPLA	-0.14	4.18

TOP 5 VOLUME GAINER FOR THE SESSION

SCRIPS	CP AS ON 16/10/2017	CP AS ON 17/10/2017	Change (%)	Vol AS ON 16/10/2017	Vol AS ON 17/10/2017	Change (%)
BEML	1733.8	1784.45	2.92	594	10080	1596.97%
TORNTPHARM	1289.35	1334.7	3.52	248	1521	513.31%
GODFRYPHLP	1019.15	1029.05	0.97	158	836	429.11%
ACC	1790.2	1796.15	0.33	3048	11424	274.80%
INFIBEAM	126.7	128.95	1.78	888	3064	245.05%

TOP 5 VOLUME LOSER FOR THE SESSION

SCRIPS	CP AS ON 16/10/2017	CP AS ON 17/10/2017	Change (%)	Vol AS ON 16/10/2017	Vol AS ON 17/10/2017	Change (%)
GODREJIND	614.05	608.55	-0.90	2701	696	-74.23%
BHARATFIN	1020.65	1024.6	0.39	18293	4819	-73.66%
NHPC	28.85	28.6	-0.87	1464	430	-70.63%
UJJIVAN	346	349.7	1.07	4740	1606	-66.12%
BERGEPAIN	267.65	265.7	-0.73	897	317	-64.66%

Technical Trend

TOP 10 OPEN INTEREST GAINER FOR THE SESSION

SCRIPS	CP AS ON 16/10/2017	CP AS ON 17/10/2017	Change (%)	OI AS ON 16/10/2017	OI AS ON 17/10/2017	Change (%)
TORNTPHARM	1289.35	1334.7	3.52	287200	373200	29.94
BEML	1733.8	1784.45	2.92	2146200	2527200	17.75
ZEEL	516.7	496.45	-3.92	7553000	8665800	14.73
NBCC	240.65	251.3	4.43	4014000	4551000	13.38
ACC	1790.2	1796.15	0.33	1806400	2047600	13.35
PFC	123.85	128.7	3.92	37500000	41826000	11.54
STAR	882.85	884.55	0.19	3689000	4076000	10.49
HEXAWARE	277.35	282	1.68	2172000	2373000	9.25
DCBBANK	191.05	184.8	-3.27	7150500	7812000	9.25
MOTHERSUMI	355.75	355.1	-0.18	12101250	13166250	8.80

TOP 10 OPEN INTEREST LOSER FOR THE SESSION

SCRIPS	CP AS ON 16/10/2017	CP AS ON 17/10/2017	Change (%)	OI AS ON 16/10/2017	OI AS ON 17/10/2017	Change (%)
ESCORTS	721.4	728.1	0.93	3381400	3128400	-7.48
BERGEPAIN	267.65	265.7	-0.73	1680800	1577400	-6.15
FEDERALBNK	125.35	126.05	0.56	79640000	74932000	-5.91
VEDL	335.5	334.45	-0.31	56080500	52801000	-5.85
ULTRACEMCO	4021.55	4096.85	1.87	1401200	1350000	-3.65
TATAMTRDVR	245.95	246.2	0.10	24708600	23862300	-3.43
BHARATFIN	1020.65	1024.6	0.39	13803000	13359000	-3.22
CHOLAFIN	1132.95	1135.95	0.26	436000	422500	-3.10
JETAIRWAYS	479.2	483.5	0.90	4990800	4839600	-3.03
GRANULES	141.45	143.3	1.31	16750000	16260000	-2.93

Technical Trend

Pivot Report– Nifty 50

Symbol	PClose	Support3	Support2	Support1	Pivot	Resist1	Resist2	Resist3
ADANIPTS	396.9	383.8	387.0	391.9	395.1	400.1	403.3	408.2
AMBUJACEM	277.7	271.6	274.1	275.9	278.4	280.2	282.7	284.5
ASIANPAINT	1163.0	1142.7	1148.4	1155.7	1161.3	1168.6	1174.3	1181.6
AUOPHARMA	735.3	719.6	725.0	730.2	735.6	740.8	746.2	751.4
AXISBANK	514.6	495.6	499.9	507.2	511.5	518.8	523.1	530.4
BAJAJ-AUTO	3134.7	3075.4	3090.5	3112.6	3127.8	3149.9	3165.0	3187.1
BAJFINANCE	1950.8	1926.3	1934.7	1942.7	1951.1	1959.1	1967.5	1975.5
BHARTIARTL	384.6	364.7	369.8	377.2	382.4	389.8	394.9	402.3
BOSCHLTD	21226.6	20844.4	20949.8	21088.2	21193.6	21332.0	21437.4	21575.8
BPCL	482.3	469.4	472.7	477.5	480.9	485.7	489.0	493.8
CIPLA	590.2	578.1	581.8	586.0	589.7	593.9	597.6	601.8
COALINDIA	285.7	277.7	279.5	282.6	284.4	287.5	289.3	292.4
DRREDDY	2411.4	2368.6	2385.1	2398.2	2414.7	2427.9	2444.4	2457.5
EICHERMOT	31545.2	30687.6	31070.0	31307.6	31689.9	31927.5	32309.9	32547.5
GAIL	444.6	435.9	439.3	442.0	445.4	448.1	451.5	454.2
HCLTECH	899.6	872.2	884.7	892.1	904.6	912.0	924.5	931.9
HDFC	1744.8	1725.7	1731.5	1738.1	1743.9	1750.5	1756.3	1762.9
HDFCBANK	1802.7	1769.6	1781.1	1791.9	1803.4	1814.2	1825.7	1836.5
HEROMOTOCO	3695.3	3604.4	3632.8	3664.0	3692.4	3723.6	3752.0	3783.2
HINDALCO	252.1	243.5	245.8	248.9	251.2	254.3	256.6	259.7
HINDPETRO	436.6	426.0	430.3	433.4	437.7	440.8	445.1	448.2
HINDUNILVR	1209.2	1174.0	1189.5	1199.4	1214.9	1224.7	1240.2	1250.1
IBULHSGFIN	1281.9	1248.2	1257.3	1269.6	1278.6	1290.9	1300.0	1312.3
ICICIBANK	269.8	264.5	266.8	268.3	270.7	272.2	274.5	276.0
INDUSINDBK	1725.2	1691.6	1700.0	1712.6	1720.9	1733.5	1741.9	1754.5
INFRATEL	399.9	391.3	394.9	397.4	401.0	403.4	407.0	409.5
INFY	935.5	919.6	924.6	930.0	935.0	940.4	945.4	950.8
IOC	410.9	400.8	405.1	408.0	412.3	415.1	419.4	422.3
ITC	266.2	262.2	263.7	264.9	266.4	267.7	269.2	270.4
KOTAKBANK	1055.7	1029.8	1037.1	1046.4	1053.7	1063.0	1070.3	1079.6
LT	1142.7	1118.6	1128.4	1135.6	1145.4	1152.6	1162.4	1169.6
LUPIN	1062.0	1016.2	1028.9	1045.5	1058.2	1074.8	1087.5	1104.1
M&M	1305.1	1280.0	1290.6	1297.8	1308.4	1315.7	1326.3	1333.5
MARUTI	7893.7	7824.8	7855.0	7874.4	7904.6	7924.0	7954.2	7973.6
NTPC	175.5	173.0	173.7	174.6	175.2	176.1	176.8	177.7
ONGC	170.4	165.9	167.5	168.9	170.5	172.0	173.6	175.0
POWERGRID	204.8	196.8	198.9	201.8	203.9	206.8	208.9	211.8
RELIANCE	843.2	817.4	824.2	833.7	840.5	850.0	856.8	866.3
SBIN	257.0	253.2	254.5	255.7	257.0	258.2	259.5	260.7
SUNPHARMA	527.2	515.0	520.5	523.9	529.4	532.8	538.3	541.7
TATAMOTORS	423.6	412.9	417.1	420.4	424.6	427.9	432.1	435.4
TATASTEEL	690.8	663.5	674.3	682.6	693.4	701.6	712.4	720.7
TCS	2459.3	2431.7	2441.5	2450.4	2460.2	2469.1	2478.9	2487.8
TECHM	466.3	456.1	458.8	462.5	465.2	468.9	471.6	475.3
ULTRACEMCO	3970.8	3918.7	3938.1	3954.5	3973.9	3990.3	4009.7	4026.1
UPL	819.6	769.2	781.0	800.3	812.2	831.5	843.3	862.6
VEDL	321.0	310.1	314.2	317.6	321.8	325.2	329.3	332.7
WIPRO	287.0	281.9	283.5	285.2	286.8	288.5	290.1	291.8
YESBANK	372.9	368.3	369.6	371.3	372.6	374.3	375.6	377.3
ZEEL	522.9	506.2	512.0	517.4	523.2	528.7	534.5	539.9



BP WEALTH

Technical Research Desk

Tel: +91 22 61596173

Institutional Sales Desk

Tel: +91 22 61596403/04/05

Disclaimer Appendix

Analyst s holding in the Stock : Nil

Analyst s Certification:

We analysts and the authors of this report, hereby certify that all of the views expressed in this research report accurately reflect our personal views about any and all of the subject issuer s or securities. We also certify that no part of our compensation was, is, or will be directly or indirectly related to the specific recommendation s or view s in this report. Analysts aren't registered as research analysts by FINRA and might not be an associated person of the BP Equities Pvt. Ltd. Institutional Equities.

General Disclaimer

This report has been prepared by the research department of BP EQUITIES Pvt. Ltd, is for information purposes only. This report is not construed as an offer to sell or the solicitation of an offer to buy or sell any security in any jurisdiction where such an offer or solicitation would be illegal.

BP EQUITIES Pvt. Ltd have exercised due diligence in checking the correctness and authenticity of the information contained herein, so far as it relates to current and historical information, but do not guarantee its accuracy or completeness. The opinions expressed are our current opinions as of the date appearing in the material and may be subject to change from time to time. Prospective investors are cautioned that any forward looking statement are not predictions and are subject to change without prior notice.

Recipients of this material should rely on their own investigations and take their own professional advice. BP EQUITIES Pvt. Ltd or any of its affiliates or employees shall not be in any way responsible for any loss or damage that may arise to any person from any inadvertent error in the information contained in this report. BP EQUITIES Pvt. Ltd. or any of its affiliates or employees do not provide, at any time, any express or implied warranty of any kind, regarding any matter pertaining to this report, including without limitation the implied warranties of merchantability, fitness for a particular purpose, and non-infringement. The recipients of this report should rely on their own investigations.

BP EQUITIES Pvt. Ltd and/or its affiliates and/or employees may have interests/ positions, financial or otherwise in the securities mentioned in this report. Opinions expressed are our current opinions as of the date appearing on this material only. While we endeavor to update on a reasonable basis the information discussed in this material, there may be regulatory, compliance, or other reasons that prevent us from doing so.

This report is not directed to or intended for display, downloading, printing, reproducing or for distribution to or use by any person in any locality, state and country or other jurisdiction where such distribution, publication or use would be contrary to the law or regulation or would subject to BP EQUITIES Pvt. Ltd or any of its affiliates to any registration or licensing requirement within such jurisdiction.

Corporate Office:

4th floor,
Rustom Bldg,
29, Veer Nariman Road, Fort,
Mumbai-400001
Phone- +91 22 6159 6464
Fax-+91 22 6159 6160
Website- www.bpwealth.com

Registered Office:

24/26, 1st Floor, Cama Building,
Dalal street, Fort,
Mumbai-400001
BP Equities Pvt. Ltd.
CIN No: U67120MH1997PTC107392