

NIFTY FUT : IMMEDIATE RESISTANCE AT 10220



Source: Falcon, BP Equities Research

Nifty futures closed lower by 0.67% at 10153. Index has surpassed the previous peak to form a new all time high with a gap up and sustained the gains which is a bullish signal for short term trend. Index earlier had reversed after taking support at lower trend line of the broadening wedge and is now expected to head toward the upper trend line of the wedge. Going ahead a sustenance above 10150 will continue the up move towards 10250-10380 while support comes at 10070-10020.

Intraday Nifty Future

Resistance—10220/10250/10320 Support—10150/10070/10020

BANK NIFTY FUT : IMMEDIATE RESISTANCE AT 25100



Source: Falcon, BP Equities Research

Bank Nifty futures closed 0.82% higher at 25047. After consolidating for past three days Index opened with a gap up closed above its immediate resistance of 24900 which is a bullish signal for short term trend. Earlier index continued its up move after consolidating for past six sessions which suggests the resumption of up move which start from 23822. Going ahead a sustenance above 25050 will continue the up move towards 25200-25600 while support comes at 24750-24670.

Intraday Bank Nifty Future

Resistance—25100/25200/25350 Support—24900/24750/24670

Technical Trend

INTRADAY TRADER'S PICKS

Sr.No.	STOCK	CLOSE	S1	S2	S3	R1	R2	R3	RECOMMENDATION
1	BIOCON	356.90	354	350	346	364	368	372	BUY ABOVE 359
2	HSCL	126.85	125	122	119	131	134	137	BUY ABOVE 128
3	HPL	151.90	148	145	142	154	157	160	SELL BELOW 151
4	TATASTEEL	672.90	661	654	647	679	686	693	SELL BELOW 670
5	UBL	797.95	792	784	775	808	816	825	BUY ABOVE 800

Technical Trend

DERIVATIVES

INDICES SNAPSHOT

SCRIPS	CP AS ON 15/09/2017	CP AS ON 18/09/2017	Change (%)	OI AS ON 15/09/2017	OI AS ON 18/09/2017	Change (%)
BANKNIFTY	24853	25056.9	0.82	2526680	2619920	3.69
NIFTY	10101.95	10175.3	0.73	22034250	21696600	-1.53
NIFTYIT	10612	10660	0.45	31750	30200	-4.88

Derivative Highlights

- ⇒ Nifty Future closed with a premium of 17 points.
- ⇒ Nifty Future Open Interest decreased by 1.53%. BankNifty Future Open Interest increased by 3.69%.
- ⇒ Nifty PCR - OI increased from 1.53 to 1.57, Nifty PCR - Vol decreased from 1.18 to 1.34
- ⇒ FII Sold Rs 96.92 crore while DII Bought Rs. 775.61 crore in the Cash Segment. FII Sold Rs. 197.62 crore in Index Futures and Sold Rs. 1027.65 crore in index options, while in Future they Bought Rs. 83.84 crore and Bought Rs 2.98 crore in stock options
- ⇒ Among Index Option space, Highest Open Interest concentration was seen in 10000 & 9900 Strike price among the PE options. Where as among CE Options Highest Open Interest Concentration was seen in 10200 & 10100 Strike price.
- ⇒ Highest Open Interest Build Up among the PE options was seen in 10150 & 10200 Strike price. Among CE options highest build up was seen in 10200 & 10300 Strike price.

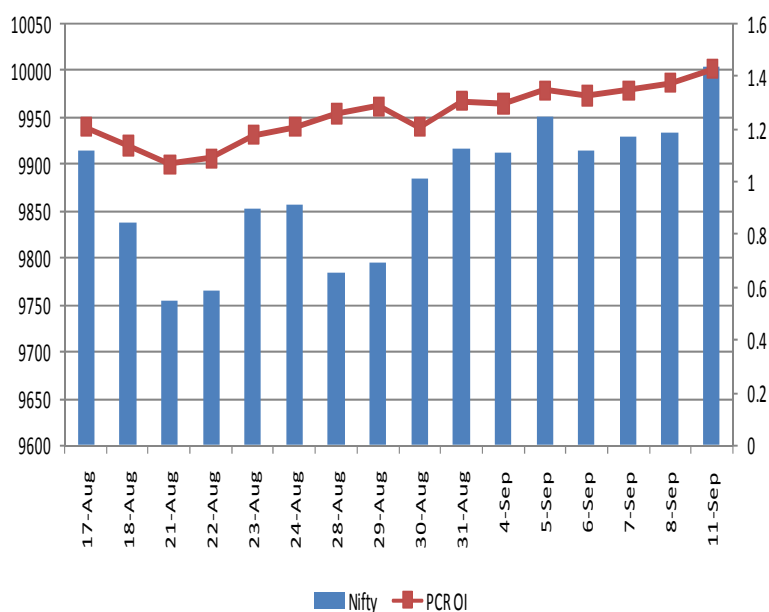
OI Concentration

PUT OPTION		CALL OPTION	
Strike Price	Open Interest	Strike Price	Open Interest
10000	6179625	10200	5399850
9900	5352375	10100	3162075
10100	4081725	10300	2978850
9800	3753525	10500	2667450
9700	3568650	10000	2287650

Highest Change in OI

PUT OPTION		CALL OPTION	
Strike Price	Change in OI	Strike Price	Change in OI
10150	1132200	10200	514050
10200	1050450	10300	410475
10000	703425	10250	405600
10050	490650	10400	93825
10100	272850	10350	61950

Nifty Future Price V/S PCR-OI



Technical Trend

Stock Analysis

Long Build-up	Long Unwinding	Short Build-up	Short Covering
BAJAJ-AUTO	HINDPETRO	BALRAMCHIN	CAPF
BIOCON	IBREALEST	CASTROLIND	CENTURYTEX
COLPAL	JPASSOCIAT	DIVISLAB	EXIDEIND
JUSTDIAL		EQUITAS	MARICO
PTC		ITC	TORNTPHARM
YESBANK		SBIN	WOCKPHARMA

STATISTICS

Highest Premium

SCRIPS	Premium %	Price change %
INFIBEAM	0.63	8.10
IDBI	0.61	1.06
HDIL	0.56	1.29
NATIONALUM	0.55	2.68
ICICIPRULI	0.54	0.01

Highest Discount

SCRIPS	Premium %	Price change %
RELCAPITAL	-1.24	1.67
DLF	-0.64	1.20
PAGEIND	-0.35	2.70
JPASSOCIAT	-0.27	-8.62
HDFCBANK	-0.25	0.62

TOP 5 VOLUME GAINER FOR THE SESSION

SCRIPS	CP AS ON 15/09/2017	CP AS ON 18/09/2017	Change (%)	Vol AS ON 15/09/2017	Vol AS ON 18/09/2017	Change (%)
GRANULES	126.7	134.95	6.51	383	3140	719.84%
JUSTDIAL	385.85	412.05	6.79	1566	10390	563.47%
SRF	1585.3	1641.8	3.56	261	1579	504.98%
INFIBEAM	147.85	159.85	8.12	1291	7673	494.35%
SREINFRA	110.2	113.45	2.95	521	2140	310.75%

TOP 5 VOLUME LOSER FOR THE SESSION

SCRIPS	CP AS ON 15/09/2017	CP AS ON 18/09/2017	Change (%)	Vol AS ON 15/09/2017	Vol AS ON 18/09/2017	Change (%)
SHREECEM	18611.3	18599.85	-0.06	734	142	-80.65%
TATACOMM	708.85	709.65	0.11	11478	2439	-78.75%
GRASIM	1238.1	1230.8	-0.59	9135	2139	-76.58%
ONGC	166	165.15	-0.51	11065	3009	-72.81%
HCC	38.1	37.9	-0.52	1620	479	-70.43%

Technical Trend

TOP 10 OPEN INTEREST GAINER FOR THE SESSION

SCRIPS	CP AS ON 15/09/2017	CP AS ON 18/09/2017	Change (%)	OI AS ON 15/09/2017	OI AS ON 18/09/2017	Change (%)
JUSTDIAL	385.85	412.05	6.79	4992000	5815200	16.49
INDIGO	1180.7	1168.35	-1.05	2017200	2314800	14.75
MFSL	617.6	630.9	2.15	5659000	6426000	13.55
JUBLFOOD	1365.05	1429.3	4.71	2353500	2651500	12.66
BALKRISIND	1681.85	1752.6	4.21	631600	698000	10.51
BAJAJ-AUTO	3034	3136.95	3.39	1616250	1778250	10.02
CGPOWER	83.7	82.6	-1.31	22548000	24516000	8.73
MRF	64570.2	65200.45	0.98	51165	55620	8.71
ITC	270.2	268.15	-0.76	50868000	54943200	8.01
APOLLOTYRE	256.75	262.55	2.26	11592000	12483000	7.69

TOP 10 OPEN INTEREST LOSER FOR THE SESSION

SCRIPS	CP AS ON 15/09/2017	CP AS ON 18/09/2017	Change (%)	OI AS ON 15/09/2017	OI AS ON 18/09/2017	Change (%)
POWERGRID	212.55	215.4	1.34	16024000	14580000	-9.01
ADANI PORTS	405.7	404.35	-0.33	8730000	7997500	-8.39
ALBK	72.8	73.15	0.48	14220000	13340000	-6.19
ZEEL	534.35	543.35	1.68	6806800	6410300	-5.83
BERGEPAIN	265.55	268.5	1.11	2813800	2659800	-5.47
EXIDEIND	218.4	224.45	2.77	13700000	12964000	-5.37
IDEA	80	82.55	3.19	64771000	61733000	-4.69
HINDZINC	305.75	311.1	1.75	10214400	9782400	-4.23
BEL	190.7	193	1.21	16573500	15894000	-4.10
JPASSOCIAT	20.3	18.5	-8.87	179724000	172788000	-3.86

Technical Trend

Pivot Report– Nifty 50

Symbol	PClose	Support3	Support2	Support1	Pivot	Resist1	Resist2	Resist3
ACC	1820.7	1778.9	1795.0	1807.8	1823.9	1836.8	1852.9	1865.7
ADANIPOINTS	405.2	395.9	399.6	402.4	406.1	408.9	412.6	415.4
AMBUJACEM	284.4	275.1	277.8	281.1	283.8	287.1	289.8	293.1
ASIANPAINT	1245.5	1207.8	1217.0	1231.3	1240.5	1254.7	1263.9	1278.2
AUOPHARMA	758.3	735.3	744.2	751.2	760.1	767.1	776.0	783.0
AXISBANK	516.2	502.4	506.7	511.4	515.7	520.4	524.7	529.4
BAJAJ-AUTO	3025.6	2804.8	2853.2	2939.4	2987.7	3073.9	3122.3	3208.5
BANKBARODA	145.3	141.7	142.7	144.0	145.0	146.3	147.3	148.6
BHARTIARTL	396.0	382.3	387.8	391.9	397.4	401.5	407.0	411.1
BOSCHLTD	21819.0	21374.0	21515.4	21667.2	21808.6	21960.4	22101.8	22253.6
BPCL	497.3	479.6	485.4	491.3	497.2	503.1	508.9	514.8
CIPLA	561.4	547.5	552.0	556.7	561.2	565.9	570.4	575.1
COALINDIA	259.8	248.9	252.1	255.9	259.1	262.9	266.1	269.9
DRREDDY	2211.2	2149.3	2175.2	2193.2	2219.1	2237.1	2263.0	2281.0
EICHERMOT	32008.0	31289.4	31469.7	31738.8	31919.1	32188.2	32368.5	32637.6
GAIL	399.9	388.1	392.6	396.2	400.7	404.3	408.8	412.4
HCLTECH	887.1	847.4	857.9	872.5	882.9	897.5	908.0	922.6
HDFC	1769.0	1734.2	1746.1	1757.5	1769.4	1780.8	1792.7	1804.1
HDFCBANK	1849.0	1819.3	1826.4	1837.7	1844.7	1856.0	1863.1	1874.4
HEROMOTOCO	3888.0	3828.7	3849.3	3868.7	3889.3	3908.7	3929.3	3948.7
HINDALCO	247.8	234.6	238.0	242.9	246.3	251.2	254.6	259.5
HINDUNILVR	1246.0	1214.3	1224.9	1235.5	1246.1	1256.7	1267.3	1277.9
IBULHSGFIN	1266.0	1227.8	1237.1	1251.5	1260.8	1275.2	1284.5	1298.9
ICICIBANK	291.6	285.3	288.1	289.9	292.7	294.5	297.3	299.1
INDUSINDBK	1699.4	1647.8	1669.5	1684.4	1706.1	1721.1	1742.8	1757.7
INFRATEL	374.0	354.9	362.3	368.1	375.5	381.4	388.8	394.6
INFY	908.3	874.8	883.5	895.9	904.6	916.9	925.6	938.0
IOC	415.7	399.3	406.3	411.0	418.0	422.7	429.7	434.4
ITC	269.3	262.9	265.5	267.4	270.1	272.0	274.6	276.5
KOTAKBANK	1005.1	983.6	990.6	997.8	1004.8	1012.0	1019.0	1026.2
LT	1212.4	1182.8	1192.4	1202.4	1212.0	1222.0	1231.6	1241.6
LUPIN	1009.6	969.8	979.9	994.7	1004.9	1019.7	1029.8	1044.6
M&M	1294.3	1265.8	1275.4	1284.8	1294.4	1303.8	1313.4	1322.8
MARUTI	8099.8	7980.2	8011.9	8055.8	8087.5	8131.4	8163.1	8207.0
NTPC	167.4	165.5	166.2	166.8	167.5	168.1	168.8	169.4
ONGC	166.8	152.4	155.7	161.2	164.5	170.1	173.4	178.9
POWERGRID	212.5	203.9	206.0	209.3	211.4	214.6	216.7	220.0
RELIANCE	841.8	815.3	825.0	833.4	843.1	851.5	861.2	869.6
SBIN	271.5	264.8	267.4	269.4	272.0	274.0	276.6	278.6
SUNPHARMA	520.7	498.9	504.7	512.7	518.5	526.5	532.2	540.2
TATAMOTORS	401.8	392.2	396.1	398.9	402.8	405.7	409.6	412.4
TATAMTRDVR	228.3	221.4	224.2	226.2	229.0	231.1	233.9	235.9
TATAPOWER	84.3	82.6	83.2	83.8	84.4	84.9	85.5	86.1
TATASTEEL	679.0	663.4	667.5	673.2	677.3	683.1	687.2	692.9
TCS	2506.1	2456.4	2470.7	2488.4	2502.7	2520.4	2534.7	2552.4
TECHM	444.3	427.9	432.6	438.5	443.2	449.0	453.7	459.6
ULTRACEMCO	4211.0	4132.4	4154.2	4182.6	4204.4	4232.7	4254.5	4282.9
VEDL	319.0	301.6	306.7	312.9	318.0	324.2	329.3	335.5
WIPRO	285.8	276.9	279.3	282.5	284.9	288.1	290.5	293.7
YESBANK	1845.1	1796.9	1812.1	1828.6	1843.8	1860.3	1875.5	1892.0
ZEEL	534.2	509.4	515.5	524.8	530.9	540.2	546.3	555.6



BP WEALTH

Technical Research Desk

Tel: +91 22 61596173

Institutional Sales Desk

Tel: +91 22 61596403/04/05

Disclaimer Appendix

Analyst s holding in the Stock : Nil

Analyst s Certification:

We analysts and the authors of this report, hereby certify that all of the views expressed in this research report accurately reflect our personal views about any and all of the subject issuer s or securities. We also certify that no part of our compensation was, is, or will be directly or indirectly related to the specific recommendation s or view s in this report. Analysts aren't registered as research analysts by FINRA and might not be an associated person of the BP Equities Pvt. Ltd. Institutional Equities.

General Disclaimer

This report has been prepared by the research department of BP EQUITIES Pvt. Ltd, is for information purposes only. This report is not construed as an offer to sell or the solicitation of an offer to buy or sell any security in any jurisdiction where such an offer or solicitation would be illegal.

BP EQUITIES Pvt. Ltd have exercised due diligence in checking the correctness and authenticity of the information contained herein, so far as it relates to current and historical information, but do not guarantee its accuracy or completeness. The opinions expressed are our current opinions as of the date appearing in the material and may be subject to change from time to time. Prospective investors are cautioned that any forward looking statement are not predictions and are subject to change without prior notice.

Recipients of this material should rely on their own investigations and take their own professional advice. BP EQUITIES Pvt. Ltd or any of its affiliates or employees shall not be in any way responsible for any loss or damage that may arise to any person from any inadvertent error in the information contained in this report. BP EQUITIES Pvt. Ltd. or any of its affiliates or employees do not provide, at any time, any express or implied warranty of any kind, regarding any matter pertaining to this report, including without limitation the implied warranties of merchantability, fitness for a particular purpose, and non-infringement. The recipients of this report should rely on their own investigations.

BP EQUITIES Pvt. Ltd and/or its affiliates and/or employees may have interests/ positions, financial or otherwise in the securities mentioned in this report. Opinions expressed are our current opinions as of the date appearing on this material only. While we endeavor to update on a reasonable basis the information discussed in this material, there may be regulatory, compliance, or other reasons that prevent us from doing so.

This report is not directed to or intended for display, downloading, printing, reproducing or for distribution to or use by any person in any locality, state and country or other jurisdiction where such distribution, publication or use would be contrary to the law or regulation or would subject to BP EQUITIES Pvt. Ltd or any of its affiliates to any registration or licensing requirement within such jurisdiction.

Corporate Office:

4th floor,
Rustom Bldg,
29, Veer Nariman Road, Fort,
Mumbai-400001
Phone- +91 22 6159 6464
Fax-+91 22 6159 6160
Website- www.bpwealth.com

Registered Office:

24/26, 1st Floor, Cama Building,
Dalal street, Fort,
Mumbai-400001
BP Equities Pvt. Ltd.
CIN No: U67120MH1997PTC107392