

NIFTY FUT : IMMEDIATE RESISTANCE AT 9880



Source: Falcon, BP Equities Research

Nifty futures closed lower by 0.67% at 9837. Index opened gap down and remained under pressure throughout the session. Index earlier has formed Morning Doji star a bullish reversal candlestick pattern which suggests recent trough to act as strong support and index can see a pullback. Index has reversed after taking support at lower trend line of the broadening wedge wedge which is a bullish signal for short term trend. RSI has formed positive reversal with price which is a bullish signal and compliments the bullish view of price. Going ahead index has immediate resistance at 9930, for index to continue its up move it needs to surpass this level while support comes at 9780-9710.

Intraday Nifty Future Resistance—9880/9930/9970 Support—9780/9710/9680

BANK NIFTY FUT : IMMEDIATE RESISTANCE AT 24250



Source: Falcon, BP Equities Research

Bank Nifty futures closed 0.67% lower at 24074. Index opened gap up but failed to sustain the gains and closed in red. Going ahead index has immediate support at 23950, a sustenance below this level will open the way for 23840-23740 while resistance comes at 24250-24350.

Intraday Bank Nifty Future Resistance—24250/24350/24570 Support—23980/23840/23740

Technical Trend

INTRADAY TRADER'S PICKS

Sr.No.	STOCK	CLOSE	S1	S2	S3	R1	R2	R3	RECOMMENDATION
1	APTECHT	229.30	227	224	221	236	239	242	BUY ABOVE 231.5
2	BHARATFIN	876.6	865	854	843	895	896	907	BUY ABOVE 880
3	CENTRALBK	74.45	73.5	72.7	71.9	76.9	77.8	78.6	BUY ABOVE 75.2
4	ONGC	160.90	159.5	157.5	155	164.5	166.5	169	BUY ABOVE 162
5	POWERGRID	222.95	221	218	215	227	230	233	BUY ABOVE 224

Technical Trend

DERIVATIVES

INDICES SNAPSHOT

SCRIPS	CP AS ON 17/08/2017	CP AS ON 18/08/2017	Change (%)	OI AS ON 17/08/2017	OI AS ON 18/08/2017	Change (%)
BANKNIFTY	24262.15	24097	-0.68	2026120	2165400	6.87
NIFTY	9909.45	9854.4	-0.56	26833050	26985225	0.57
NIFTYIT	10806	10592	-1.98	30150	33350	10.61

Derivative Highlights

- ⇒ Nifty Future closed with a premium of 17 points v/s a premium of 5 points in the previous session
- ⇒ Nifty Future Open Interest increased by 0.57%. BankNifty Future Open Interest decreased by 6.87%.
- ⇒ Nifty PCR - OI decreased from 1.21 to 1.14, Nifty PCR - Vol remained unchanged at 1.10
- ⇒ FII Sold Rs 2182.12 crore while DII Bought Rs. 584.59 crore in the Cash Segment. FII Sold Rs. 385.21 crore in Index Futures and Sold Rs.1442.01 crore in index options, while in Future they Sold Rs. 664.37 crore and Sold Rs 112.46 crore in stock options¹
- ⇒ Among Index Option space, Highest Open Interest concentration was seen in 9800 & 9500 Strike price among the PE options. Where as among CE Options Highest Open Interest Concentration was seen in 10000 & 10200 Strike price.
- ⇒ Highest Open Interest Build Up among the PE options was seen in 8000 & 9550 Strike price. Among CE options highest build up was seen in 9900 & 9800 Strike price.

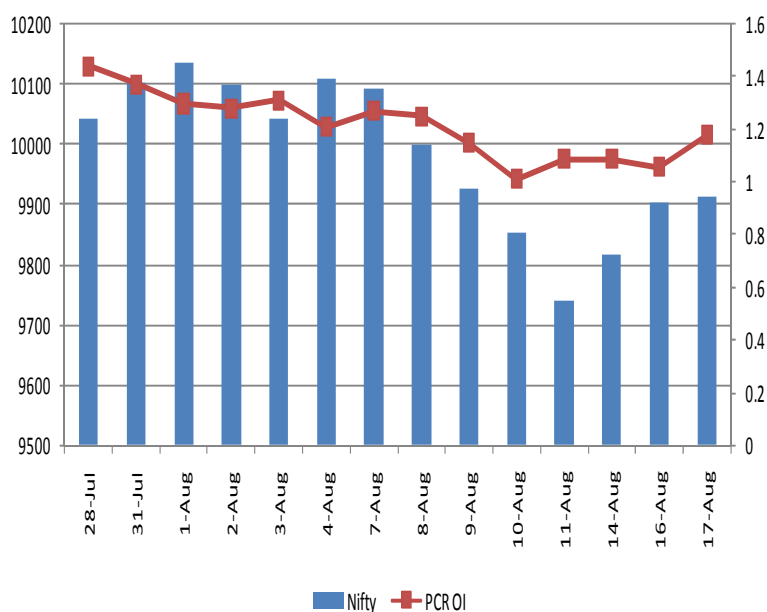
OI Concentration

PUT OPTION		CALL OPTION	
Strike Price	Open Interest	Strike Price	Open Interest
9800	5892825	10000	5903925
9500	5175675	10200	4928325
9700	4538400	10100	4487700
9600	3773700	9900	4106475
9900	2969025	9800	3150375

Highest Change in OI

PUT OPTION		CALL OPTION	
Strike Price	Change in OI	Strike Price	Change in OI
8000	52275	9900	743100
9550	49275	9800	561150
9650	39600	10000	535350
9750	14100	11000	180975
9100	13650	9850	173700

Nifty Future Price V/S PCR-OI



Technical Trend

Stock Analysis

Long Build-up	Long Unwinding	Short Build-up	Short Covering
ACC	BALKRISIND	AJANTPHARM	APOLLOTYRE
BHARATFIN	CENTURYTEX	BANKINDIA	CHENNPETRO
HINDUNILVR	GRASIM	INFY	ENGINEERSIN
MRPL	INDIGO	JETAIRWAYS	INFRATEL
PCJEWELLER	SUZLON	PNB	ITC
TATAGLOBAL	UNIONBANK	ZEEL	RAYMOND

STATISTICS

Highest Premium

SCRIPS	Premium %	Price change %
INFIBEAM	0.63	0.25
JSWSTEEL	0.63	1.04
RCOM	0.62	4.09
SAIL	0.59	1.10
HCC	0.57	-2.65

Highest Discount

SCRIPS	Premium %	Price change %
RBLBANK	-1.02	1.99
GSFC	-0.91	0.69
MARUTI	-0.63	0.22
PIDILITIND	-0.59	0.41
GAIL	-0.51	1.34

TOP 5 VOLUME GAINER FOR THE SESSION

SCRIPS	CP AS ON 17/08/2017	CP AS ON 18/08/2017	Change (%)	Vol AS ON 17/08/2017	Vol AS ON 18/08/2017	Change (%)
INFY	1021.2	927.15	-9.21	32222	189498	488%
DISHTV	74	78.4	5.95	1136	3957	248%
INDIGO	1280.7	1274.6	-0.48	1372	3726	172%
RCOM	23.3	24.3	4.29	1574	3672	133%
TCS	2486.75	2512.05	1.02	4611	9772	112%

TOP 5 VOLUME LOSER FOR THE SESSION

SCRIPS	CP AS ON 17/08/2017	CP AS ON 18/08/2017	Change (%)	Vol AS ON 17/08/2017	Vol AS ON 18/08/2017	Change (%)
GMRINFRA	18.6	18.3	-1.61	7600	2300	-70%
COALINDIA	246.95	244.2	-1.11	11329	3853	-66%
BIOCON	329.4	329.7	0.09	7324	2645	-64%
HEXAWARE	278.45	274.55	-1.40	4438	1772	-60%
GODFRYPHLP	1076.95	1088.6	1.08	3727	1672	-55%

Technical Trend

TOP 10 OPEN INTEREST GAINER FOR THE SESSION

SCRIPS	CP AS ON 17/08/2017	CP AS ON 18/08/2017	Change (%)	OI AS ON 17/08/2017	OI AS ON 18/08/2017	Change (%)
INFY	1021.2	927.15	-9.21	28683000	41559000	44.89
ZEEL	526.85	513.7	-2.50	6501300	7317700	12.56
MRPL	121.65	125.25	2.96	8473500	9265500	9.35
PCJEWELLER	356.85	373.7	4.72	4917000	5343000	8.66
APOLLOHOSP	1103.75	1073.05	-2.78	1467500	1586000	8.07
ACC	1782.35	1798.35	0.90	1220000	1316800	7.93
JUSTDIAL	362.75	365.05	0.63	4870800	5253600	7.86
BERGEPAIN	242.9	241.75	-0.47	1047200	1111000	6.09
NHPC	30.95	30.3	-2.10	19791000	20871000	5.46
SINTEX	34.3	32.75	-4.52	16722375	17634375	5.45

TOP 10 OPEN INTEREST LOSER FOR THE SESSION

SCRIPS	CP AS ON 17/08/2017	CP AS ON 18/08/2017	Change (%)	OI AS ON 17/08/2017	OI AS ON 18/08/2017	Change (%)
INDIGO	1280.7	1274.6	-0.48	1603200	1426200	-11.04
ITC	279.9	282.15	0.80	50352000	46188000	-8.27
CHENNPETRO	393.25	399.4	1.56	2254500	2070000	-8.18
VOLTAS	544.4	539.55	-0.89	3306000	3074000	-7.02
BATAINDIA	677.1	680.1	0.44	3071200	2871000	-6.52
RAYMOND	746.25	776.6	4.07	2084800	1969600	-5.53
INDIANB	304.55	304.95	0.13	3534000	3352000	-5.15
GODFRYPHLP	1076.95	1088.6	1.08	729000	692000	-5.08
HAVELLS	473.6	479.5	1.25	3312000	3144000	-5.07
MFSL	601.6	598.45	-0.52	4820000	4591000	-4.75

Technical Trend

Pivot Report– Nifty 50

Symbol	PClose	Support3	Support2	Support1	Pivot	Resist1	Resist2	Resist3
ACC	1780.1	1705.8	1738.6	1759.3	1792.1	1812.9	1845.7	1866.4
ADANIPTS	389.3	371.1	379.6	384.4	392.9	397.8	406.3	411.1
AMBUJACEM	270.9	263.0	266.2	268.5	271.7	274.1	277.3	279.6
ASIANPAINT	1135.0	1119.6	1125.8	1130.4	1136.6	1141.2	1147.4	1152.0
AUROPHARMA	703.5	669.9	685.2	694.4	709.7	718.8	734.1	743.3
AXISBANK	497.2	485.2	490.1	493.6	498.5	502.1	507.0	510.5
BAJAJ-AUTO	2825.9	2753.1	2784.6	2805.2	2836.7	2857.3	2888.8	2909.4
BANKBARODA	148.3	140.3	143.5	145.9	149.1	151.5	154.7	157.1
BHARTIARTL	416.4	394.2	400.1	408.2	414.1	422.3	428.2	436.3
BOSCHLTD	22038.0	21358.6	21679.3	21858.6	22179.3	22358.6	22679.3	22858.6
BPCL	493.7	457.0	468.6	481.1	492.7	505.3	516.9	529.4
CIPLA	573.2	540.0	554.9	564.1	579.0	588.2	603.1	612.3
COALINDIA	247.0	227.3	232.2	239.6	244.5	251.9	256.8	264.2
DRREDDY	2011.3	1952.4	1972.4	1991.8	2011.9	2031.3	2051.3	2070.7
EICHERMOT	30928.0	30189.3	30403.2	30665.6	30879.4	31141.8	31355.7	31618.1
GAIL	376.2	363.6	366.8	371.5	374.7	379.4	382.6	387.3
HCLTECH	871.4	848.7	854.7	863.1	869.1	877.4	883.4	891.8
HDFC	1759.3	1685.3	1702.8	1731.0	1748.5	1776.8	1794.3	1822.5
HDFCBANK	1765.4	1725.3	1739.5	1752.5	1766.7	1779.7	1793.9	1806.9
HERMOTOCO	3997.9	3906.8	3941.2	3969.5	4003.9	4032.2	4066.6	4094.9
HINDALCO	230.3	213.9	220.8	225.6	232.5	237.3	244.2	249.0
HINDUNILVR	1177.3	1146.5	1155.8	1166.5	1175.8	1186.5	1195.8	1206.5
IBULHSGFIN	1200.5	1164.1	1179.1	1189.8	1204.8	1215.5	1230.5	1241.2
ICICIBANK	293.2	283.8	287.6	290.4	294.1	296.9	300.7	303.5
INDUSINDBK	1628.5	1581.3	1599.4	1613.9	1632.0	1646.5	1664.6	1679.1
INFRATEL	379.4	365.5	372.0	375.7	382.2	385.9	392.4	396.1
INFY	1020.9	971.7	984.9	1002.9	1016.1	1034.1	1047.3	1065.3
IOC	425.3	415.5	418.8	422.0	425.3	428.6	431.8	435.1
ITC	280.0	272.6	275.3	277.6	280.3	282.6	285.3	287.6
KOTAKBANK	989.0	958.7	970.3	979.7	991.3	1000.7	1012.3	1021.7
LT	1134.0	1098.4	1114.7	1124.4	1140.7	1150.3	1166.6	1176.3
LUPIN	954.0	929.7	940.4	947.2	957.8	964.6	975.3	982.1
M&M	1367.0	1342.4	1350.5	1358.8	1366.9	1375.1	1383.2	1391.5
MARUTI	7582.5	7384.8	7474.9	7528.7	7618.8	7672.5	7762.6	7816.4
NTPC	176.8	163.4	166.4	171.6	174.5	179.7	182.7	187.9
ONGC	160.6	158.2	159.1	159.9	160.8	161.5	162.4	163.2
POWERGRID	219.5	215.4	217.1	218.3	219.9	221.1	222.8	224.0
RELIANCE	1567.1	1516.5	1538.8	1553.0	1575.3	1589.5	1611.8	1626.0
SBIN	280.9	274.3	277.2	279.0	281.9	283.7	286.6	288.4
SUNPHARMA	488.3	472.6	476.6	482.4	486.4	492.3	496.3	502.1
TATAMOTORS	385.3	374.4	379.5	382.4	387.4	390.3	395.4	398.3
TATAMTRDVR	228.6	219.2	223.6	226.1	230.5	233.0	237.4	239.9
TATAPOWER	81.7	79.9	80.6	81.1	81.9	82.4	83.1	83.6
TATASTEEL	625.4	607.8	615.9	620.7	628.8	633.6	641.7	646.5
TCS	2485.7	2420.6	2441.4	2463.5	2484.3	2506.4	2527.2	2549.3
TECHM	424.4	412.1	416.8	420.6	425.3	429.1	433.8	437.6
ULTRACEMCO	3932.9	3827.2	3872.1	3902.5	3947.5	3977.9	4022.8	4053.2
VEDL	304.8	291.2	296.1	300.5	305.4	309.7	314.6	319.0
WIPRO	288.4	284.2	286.1	287.2	289.1	290.2	292.1	293.2
YESBANK	1738.1	1668.9	1699.1	1718.6	1748.8	1768.3	1798.5	1818.0
ZEEL	526.8	493.2	501.2	514.0	521.9	534.7	542.7	555.5



BP WEALTH

Technical Research Desk

Tel: +91 22 61596173

Institutional Sales Desk

Tel: +91 22 61596403/04/05

Disclaimer Appendix

Analyst s holding in the Stock : Nil

Analyst s Certification:

We analysts and the authors of this report, hereby certify that all of the views expressed in this research report accurately reflect our personal views about any and all of the subject issuer s or securities. We also certify that no part of our compensation was, is, or will be directly or indirectly related to the specific recommendation s or view s in this report. Analysts aren't registered as research analysts by FINRA and might not be an associated person of the BP Equities Pvt. Ltd. Institutional Equities.

General Disclaimer

This report has been prepared by the research department of BP EQUITIES Pvt. Ltd, is for information purposes only. This report is not construed as an offer to sell or the solicitation of an offer to buy or sell any security in any jurisdiction where such an offer or solicitation would be illegal.

BP EQUITIES Pvt. Ltd have exercised due diligence in checking the correctness and authenticity of the information contained herein, so far as it relates to current and historical information, but do not guarantee its accuracy or completeness. The opinions expressed are our current opinions as of the date appearing in the material and may be subject to change from time to time. Prospective investors are cautioned that any forward looking statement are not predictions and are subject to change without prior notice.

Recipients of this material should rely on their own investigations and take their own professional advice. BP EQUITIES Pvt. Ltd or any of its affiliates or employees shall not be in any way responsible for any loss or damage that may arise to any person from any inadvertent error in the information contained in this report. BP EQUITIES Pvt. Ltd. or any of its affiliates or employees do not provide, at any time, any express or implied warranty of any kind, regarding any matter pertaining to this report, including without limitation the implied warranties of merchantability, fitness for a particular purpose, and non-infringement. The recipients of this report should rely on their own investigations.

BP EQUITIES Pvt. Ltd and/or its affiliates and/or employees may have interests/ positions, financial or otherwise in the securities mentioned in this report. Opinions expressed are our current opinions as of the date appearing on this material only. While we endeavor to update on a reasonable basis the information discussed in this material, there may be regulatory, compliance, or other reasons that prevent us from doing so.

This report is not directed to or intended for display, downloading, printing, reproducing or for distribution to or use by any person in any locality, state and country or other jurisdiction where such distribution, publication or use would be contrary to the law or regulation or would subject to BP EQUITIES Pvt. Ltd or any of its affiliates to any registration or licensing requirement within such jurisdiction.

Corporate Office:

4th floor,
Rustom Bldg,
29, Veer Nariman Road, Fort,
Mumbai-400001
Phone- +91 22 6159 6464
Fax-+91 22 6159 6160
Website- www.bpwealth.com

Registered Office:

24/26, 1st Floor, Cama Building,
Dalal street, Fort,
Mumbai-400001

BP Equities Pvt. Ltd.
CIN No: U67120MH1997PTC107392