

NIFTY FUT : IMMEDIATE RESISTANCE AT 10180



Source: Falcon, BP Equities Research

Nifty futures closed lower by 0.06% at 10141. Index remained flat for second consecutive day which suggests lack of followup buying after consolidation breakout. Index earlier had reversed after taking support at lower trend line of the broadening wedge and is now expected to head toward the upper trend line of the wedge. Going ahead a sustenance above 10150 will continue the up move towards 10250-10380 while support comes at 10070-10020.

Intraday Nifty Future Resistance—10180/10220/10250 Support—10130/10070/10020

BANK NIFTY FUT : IMMEDIATE RESISTANCE AT 25100



Source: Falcon, BP Equities Research

Bank Nifty futures closed 0.31% lower at 24965. Index opened gap down and remained sideways negative during the session. After consolidating for past three days Index opened with a gap up closed above its immediate resistance of 24900 which is a bullish signal for short term trend. Earlier index continued its up move after consolidating for past six sessions which suggests the resumption of up move which start from 23822. Going ahead a sustenance above 25050 will continue the up move towards 25200-25600 while support comes at 24750-24670.

Intraday Bank Nifty Future Resistance—25100/25200/25350 Support—24900/24750/24670

Technical Trend

INTRADAY TRADER'S PICKS

Sr.No.	STOCK	CLOSE	S1	S2	S3	R1	R2	R3	RECOMMENDATION
1	CADILAHC	486.85	483	477	470	495	501	507	BUY ABOVE 489
2	NALCO	82.5	81.9	80.8	79.7	84.1	85.2	86.3	BUY ABOVE 83
3	NBCC	220.15	217	214	211	225	228	231	BUY ABOVE 221
4	SANGAMIND	221.20	220	216	212	228	232	236	BUY ABOVE 224
5	SBIN	270.05	267	264	261	277	280	283	BUY ABOVE 272

Technical Trend

DERIVATIVES

INDICES SNAPSHOT

SCRIPS	CP AS ON 19/09/2017	CP AS ON 20/09/2017	Change (%)	OI AS ON 19/09/2017	OI AS ON 20/09/2017	Change (%)
BANKNIFTY	25060.5	25023.6	-0.15	2560960	2475600	-3.33
NIFTY	10168.85	10167.55	-0.01	21909225	22498275	2.69
NIFTYIT	10660	10664	0.04	29450	30250	2.72

Derivative Highlights

- ⇒ Nifty Future closed with a premium of 27 points.
- ⇒ Nifty Future Open Interest increased by 2.69%. BankNifty Future Open Interest decreased by 3.33%.
- ⇒ Nifty PCR - OI was observed to be 1.57, Nifty PCR - Vol was observed to be 1.20
- ⇒ FII Sold Rs 1185.44 crore while DII Bought Rs. 946.23 crore in the Cash Segment. FII Sold Rs. 469.13 crore in Index Futures and Bought Rs. 831.40 crore in index options, while in Future they Bought Rs. 128.52 crore and Sold Rs 33.48 crore in stock options
- ⇒ Among Index Option space, Highest Open Interest concentration was seen in 10000 & 9900 Strike price among the PE options. Where as among CE Options Highest Open Interest Concentration was seen in 10200 & 10100 Strike price.
- ⇒ Highest Open Interest Build Up among the PE options was seen in 10150 & 10200 Strike price. Among CE options highest build up was seen in 10200 & 10300 Strike price.

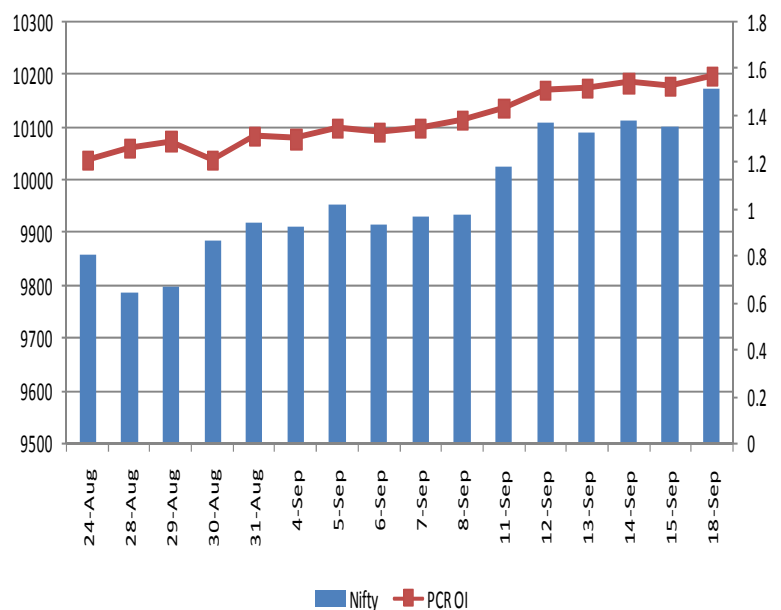
OI Concentration

PUT OPTION		CALL OPTION	
Strike Price	Open Interest	Strike Price	Open Interest
10000	6179625	10200	5399850
9900	5352375	10100	3162075
10100	4081725	10300	2978850
9800	3753525	10500	2667450
9700	3568650	10000	2287650

Highest Change in OI

PUT OPTION		CALL OPTION	
Strike Price	Change in OI	Strike Price	Change in OI
10150	1132200	10200	514050
10200	1050450	10300	410475
10000	703425	10250	405600
10050	490650	10400	93825
10100	272850	10350	61950

Nifty Future Price V/S PCR-OI



Technical Trend

Stock Analysis

Long Build-up	Long Unwinding	Short Build-up	Short Covering
ADANI PORTS	BALRAMCHIN	ACC	BANKBARODA
CANBK	HINDUNILVR	AXISBANK	BHARATFIN
DRREDDY	ICICIBANK	CEATLTD	HDFCBANK
KAJARIACER	INDUSINDBK	HINDALCO	INFY
NATIONALUM	MCX	JSWSTEEL	MOTHERSUMI
TATASTEEL	TCS	MINDTREE	SBIN

STATISTICS

Highest Premium

SCRIPS	Premium %	Price change %
INFIBEAM	0.79	-1.7
IFCI	0.62	1.5
ADANIPOWER	0.62	2.1
PNB	0.59	0.6
CGPOWER	0.55	-0.9

Highest Discount

SCRIPS	Premium %	Price change %
RELCAPITAL	-0.96	-1.0
IGL	-0.29	1.0
ICICIPRULI	-0.27	-2.8
DJIA	-0.14	0.07
MOTHERSUMI	-0.13	1.1

TOP 5 VOLUME GAINER FOR THE SESSION

SCRIPS	CP AS ON 19/09/2017	CP AS ON 20/09/2017	Change (%)	Vol AS ON 19/09/2017	Vol AS ON 20/09/2017	Change (%)
NIITTECH	506.55	533.55	5.33	270	1970	629.63%
KTKBANK	155.45	163.7	5.31	1328	9285	599.17%
STAR	1010.95	1021.5	1.04	758	4966	555.15%
SOUTHBANK	29.25	31.7	8.38	870	5383	518.74%
BHARTIARTL	396.35	397.1	0.19	1939	10527	442.91%

TOP 5 VOLUME LOSER FOR THE SESSION

SCRIPS	CP AS ON 19/09/2017	CP AS ON 20/09/2017	Change (%)	Vol AS ON 19/09/2017	Vol AS ON 20/09/2017	Change (%)
BEML	1940.5	1872.65	-3.50	14492	2131	-85.30%
IBREALEST	254.2	253.2	-0.39	2601	595	-77.12%
MFSL	647.1	637.7	-1.45	5725	1315	-77.03%
TATAMOTORS	423.45	416.3	-1.69	35762	9127	-74.48%
VGUARD	202.85	200.5	-1.16	1345	359	-73.31%

Technical Trend

TOP 10 OPEN INTEREST GAINER FOR THE SESSION

SCRIPS	CP AS ON 19/09/2017	CP AS ON 20/09/2017	Change (%)	OI AS ON 19/09/2017	OI AS ON 20/09/2017	Change (%)
SOUTHBANK	29.25	31.7	8.38	112016580	133823358	19.47
NATIONALUM	80.9	82.85	2.41	19760000	22040000	11.54
NBCC	215.65	221.05	2.50	3282000	3639000	10.88
KTKBANK	155.45	163.7	5.31	23506800	25927400	10.30
CGPOWER	82.25	81.6	-0.79	25668000	28236000	10.00
INDIACEM	190.65	185.8	-2.54	28045500	30660000	9.32
HEROMOTOCO	3960.45	3870.25	-2.28	1465600	1596400	8.92
HINDALCO	247.6	244.9	-1.09	36274000	39385500	8.58
TATASTEEL	678.9	688.6	1.43	23726000	25616000	7.97
TITAN	642.9	633.05	-1.53	4369500	4711500	7.83

TOP 10 OPEN INTEREST LOSER FOR THE SESSION

SCRIPS	CP AS ON 19/09/2017	CP AS ON 20/09/2017	Change (%)	OI AS ON 19/09/2017	OI AS ON 20/09/2017	Change (%)
KOTAKBANK	1033.1	1026.85	-0.60	9747200	8552800	-12.25
BEML	1940.5	1872.65	-3.50	3079200	2725800	-11.48
JUSTDIAL	409.95	403.85	-1.49	4446000	4082400	-8.18
INDUSINDBK	1747	1733.1	-0.80	5135400	4786200	-6.80
ZEEL	544.8	548.6	0.70	6059300	5729100	-5.45
CAPF	827.85	824.65	-0.39	4055200	3862400	-4.75
HAVELLS	512.15	516.8	0.91	4410000	4206000	-4.63
TATAMTRDVR	241.6	238.85	-1.14	22932000	21945000	-4.30
IBULHSGFIN	1309.1	1310.25	0.09	7661600	7336000	-4.25
RPOWER	44.05	45.6	3.52	62112000	59496000	-4.21

Technical Trend

Pivot Report– Nifty 50

Symbol	PClose	Support3	Support2	Support1	Pivot	Resist1	Resist2	Resist3
ACC	1786.1	1721.0	1749.6	1767.8	1796.4	1814.6	1843.2	1861.4
ADANIPTS	409.7	399.4	402.7	406.2	409.5	413.0	416.3	419.8
AMBUJACEM	279.9	269.2	273.8	276.8	281.4	284.5	289.1	292.1
ASIANPAINT	1237.3	1207.3	1221.2	1229.2	1243.1	1251.1	1265.0	1273.0
AUOPHARMA	745.6	720.4	729.2	737.4	746.2	754.4	763.2	771.4
AXISBANK	519.5	510.9	513.8	516.6	519.6	522.4	525.3	528.1
BAJAJ-AUTO	3090.6	3041.1	3062.7	3076.6	3098.2	3112.1	3133.7	3147.6
BANKBARODA	148.4	137.2	140.5	144.4	147.7	151.6	154.9	158.8
BHARTIARTL	396.9	351.0	361.0	378.9	388.9	406.8	416.8	434.7
BOSCHLTD	21823.4	21562.6	21653.8	21738.6	21829.8	21914.6	22005.8	22090.6
BPCL	494.3	474.4	483.4	488.9	497.9	503.4	512.4	517.9
CIPLA	569.7	556.7	561.0	565.3	569.6	573.9	578.2	582.5
COALINDIA	256.6	248.1	250.7	253.6	256.2	259.1	261.7	264.6
DRREDDY	2314.7	2171.1	2205.6	2260.1	2294.6	2349.1	2383.6	2438.1
EICHERMOT	32443.5	31935.7	32117.9	32280.7	32462.8	32625.6	32807.8	32970.6
GAIL	417.3	402.2	408.9	413.1	419.7	423.9	430.6	434.8
HCLTECH	889.5	872.4	878.7	884.1	890.4	895.7	902.0	907.4
HDFC	1767.2	1726.8	1736.4	1751.8	1761.4	1776.8	1786.4	1801.8
HDFCBANK	1848.9	1826.1	1835.7	1842.3	1851.9	1858.5	1868.1	1874.7
HEROMOTOCO	3856.1	3701.3	3773.2	3814.6	3886.5	3927.9	3999.8	4041.2
HINDALCO	244.1	233.8	237.8	241.0	245.0	248.1	252.1	255.3
HINDUNILVR	1259.4	1222.9	1239.0	1249.2	1265.3	1275.4	1291.5	1301.7
IBULHSGFIN	1310.8	1280.5	1292.1	1301.4	1313.0	1322.3	1333.9	1343.2
ICICIBANK	290.6	285.9	287.8	289.2	291.0	292.4	294.3	295.7
INDUSINDBK	1726.4	1680.0	1701.3	1713.9	1735.2	1747.7	1769.0	1781.6
INFRATEL	394.0	383.1	388.1	391.0	396.0	398.9	403.9	406.8
INFY	912.7	898.2	902.8	907.8	912.4	917.3	921.9	926.9
IOC	414.0	403.4	407.7	410.8	415.1	418.3	422.6	425.7
ITC	271.6	264.6	266.2	268.9	270.4	273.1	274.7	277.4
KOTAKBANK	1023.2	1000.0	1010.1	1016.7	1026.8	1033.4	1043.5	1050.1
LT	1236.0	1203.6	1215.9	1225.9	1238.2	1248.3	1260.6	1270.6
LUPIN	1002.3	983.3	990.2	996.2	1003.1	1009.1	1016.0	1022.0
M&M	1292.5	1269.4	1279.5	1286.0	1296.1	1302.6	1312.7	1319.2
MARUTI	8120.2	8042.7	8075.9	8098.0	8131.2	8153.3	8186.5	8208.6
NTPC	167.8	163.8	165.2	166.5	168.0	169.3	170.7	172.0
ONGC	166.9	157.3	160.5	163.7	166.9	170.1	173.3	176.4
POWERGRID	212.9	207.8	210.2	211.5	213.9	215.2	217.6	218.9
RELIANCE	847.2	809.9	827.5	837.3	854.9	864.7	882.3	892.1
SBIN	270.1	263.1	265.3	267.7	269.9	272.3	274.5	276.9
SUNPHARMA	505.5	483.8	493.7	499.6	509.5	515.4	525.3	531.2
TATAMOTORS	414.8	401.2	407.1	411.0	416.9	420.7	426.6	430.5
TATAMTRDVR	238.6	231.2	234.6	236.6	240.0	242.0	245.4	247.4
TATAPOWER	84.0	80.7	82.2	83.1	84.7	85.6	87.1	88.0
TATASTEEL	687.7	660.1	667.3	677.5	684.6	694.8	702.0	712.2
TCS	2493.6	2434.2	2454.3	2473.9	2494.0	2513.6	2533.7	2553.3
TECHM	448.9	440.9	443.0	445.9	448.0	450.9	453.0	455.9
ULTRACEMCO	4209.7	4103.5	4128.8	4169.2	4194.5	4235.0	4260.3	4300.7
VEDL	323.3	315.6	318.4	320.8	323.6	326.0	328.8	331.2
WIPRO	291.9	282.2	284.2	288.1	290.1	294.0	296.0	299.9
YESBANK	376.0	368.1	370.1	373.1	375.1	378.1	380.1	383.1
ZEEL	549.1	536.5	539.3	544.2	547.1	552.0	554.8	559.7

**Disclaimer Appendix****Analyst s holding in the Stock : Nil****Analyst s Certification:**

We analysts and the authors of this report, hereby certify that all of the views expressed in this research report accurately reflect our personal views about any and all of the subject issuer s or securities. We also certify that no part of our compensation was, is, or will be directly or indirectly related to the specific recommendation s or view s in this report. Analysts aren't registered as research analysts by FINRA and might not be an associated person of the BP Equities Pvt. Ltd. Institutional Equities.

General Disclaimer

This report has been prepared by the research department of BP EQUITIES Pvt. Ltd, is for information purposes only. This report is not construed as an offer to sell or the solicitation of an offer to buy or sell any security in any jurisdiction where such an offer or solicitation would be illegal.

BP EQUITIES Pvt. Ltd have exercised due diligence in checking the correctness and authenticity of the information contained herein, so far as it relates to current and historical information, but do not guarantee its accuracy or completeness. The opinions expressed are our current opinions as of the date appearing in the material and may be subject to change from time to time. Prospective investors are cautioned that any forward looking statement are not predictions and are subject to change without prior notice.

Recipients of this material should rely on their own investigations and take their own professional advice. BP EQUITIES Pvt. Ltd or any of its affiliates or employees shall not be in any way responsible for any loss or damage that may arise to any person from any inadvertent error in the information contained in this report. BP EQUITIES Pvt. Ltd. or any of its affiliates or employees do not provide, at any time, any express or implied warranty of any kind, regarding any matter pertaining to this report, including without limitation the implied warranties of merchantability, fitness for a particular purpose, and non-infringement. The recipients of this report should rely on their own investigations.

BP EQUITIES Pvt. Ltd and/or its affiliates and/or employees may have interests/ positions, financial or otherwise in the securities mentioned in this report. Opinions expressed are our current opinions as of the date appearing on this material only. While we endeavor to update on a reasonable basis the information discussed in this material, there may be regulatory, compliance, or other reasons that prevent us from doing so.

This report is not directed to or intended for display, downloading, printing, reproducing or for distribution to or use by any person in any locality, state and country or other jurisdiction where such distribution, publication or use would be contrary to the law or regulation or would subject to BP EQUITIES Pvt. Ltd or any of its affiliates to any registration or licensing requirement within such jurisdiction.

Corporate Office:

4th floor,
Rustom Bldg,
29, Veer Nariman Road, Fort,
Mumbai-400001
Phone- +91 22 6159 6464
Fax-+91 22 6159 6160
Website- www.bpwealth.com

Registered Office:

24/26, 1st Floor, Cama Building,
Dalal street, Fort,
Mumbai-400001

BP Equities Pvt. Ltd.
CIN No: U67120MH1997PTC107392