

NIFTY FUT : IMMEDIATE RESISTANCE AT 10300



Nifty futures closed 0.15% higher at 10342. Index is facing resistance at 61.8% retracement of its downmove from 10490-10094. Earlier Index has given breakout from the consolidation in which it was moving for past over two months which is a bullish signal for medium term trend. Going ahead index has immediate resistance at 10340, for index to continue its up move it needs to sustain above this level which if it does will open the way for 10400 while support comes at 10280-10230.

Intraday Nifty Future Resistance—10340/10400/10450 Support—10280/10230/10180

BANK NIFTY FUT : IMMEDIATE RESISTANCE AT 25800



Bank Nifty futures closed 0.04% higher at 25767. Index had a gap up opening but failed to sustain the gains and closed flat. Index remained sideways throughout the session. Earlier index has given a breakout from the sideways movement of last three months which is a bullish signal for medium term trend. Going ahead index has immediate resistance at 25900, for index to continue its up move it needs to sustain above this level which if it does will open the way for 26200-26500 while support comes at 25500-25350.

Intraday Bank Nifty Future Resistance—25800/25900/26200 Support—25680/25500/25350

Technical Trend

INTRADAY TRADER'S PICKS

Sr.No.	STOCK	CLOSE	S1	S2	S3	R1	R2	R3	RECOMMENDATION
1	AEGISCHEM	234.75	232	228	224	240	244	248	BUY ABOVE 236
2	ACC	1722	1705	1690	1675	1745	1760	1785	BUY ABOVE 1725
3	ARROWGREEN	486.80	486	480	474	498	504	510	BUY ABOVE 492
4	BANCOINDIA	227.30	224	220	216	234	238	242	BUY ABOVE 229
5	GANESHHOUC	128.10	125	122	119	133	136	139	BUY ABOVE 129

Technical Trend

DERIVATIVES

INDICES SNAPSHOT

SCRIPS	CP AS ON 21/11/2017	CP AS ON 22/11/2017	Change (%)	OI AS ON 21/11/2017	OI AS ON 22/11/2017	Change (%)
BANKNIFTY	25831.85	25792.5	-0.15	2558280	2527280	-1.21
NIFTY	10320.05	10357.95	0.37	25954350	25369350	-2.25
NIFTYIT	11126	11137	0.10	30600	30950	1.14

Derivative Highlights

- ⇒ Nifty Future closed with a premium of 16 points.
- ⇒ Nifty Future Open Interest decreased by 2.25%. BankNifty Future Open Interest decreased by 1.21%.
- ⇒ Nifty PCR - OI increased from 1.30 to 1.32, Nifty Bank PCR - OI decreased from 1.07 to 0.94
- ⇒ FII Sold Rs 441.46 crore while DII Bought Rs. 837.22 crore in the Cash Segment. FII Bought Rs. 141.85 crore in Index Futures and Sold Rs.101.96 crore in index options, while in Future they Sold Rs. 231.46 crore and Bought Rs 1.34 crore in stock options
- ⇒ Among Index Option space, Highest Open Interest concentration was seen in 10200 & 10000 Strike price among the PE options. Where as among CE Options Highest Open Interest Concentration was seen in 10500 & 10400 Strike price.
- ⇒ Highest Open Interest Build Up among the PE options was seen in 10200 & 10250 Strike price. Among CE options highest build up was seen in 10500 & 10300 Strike price.

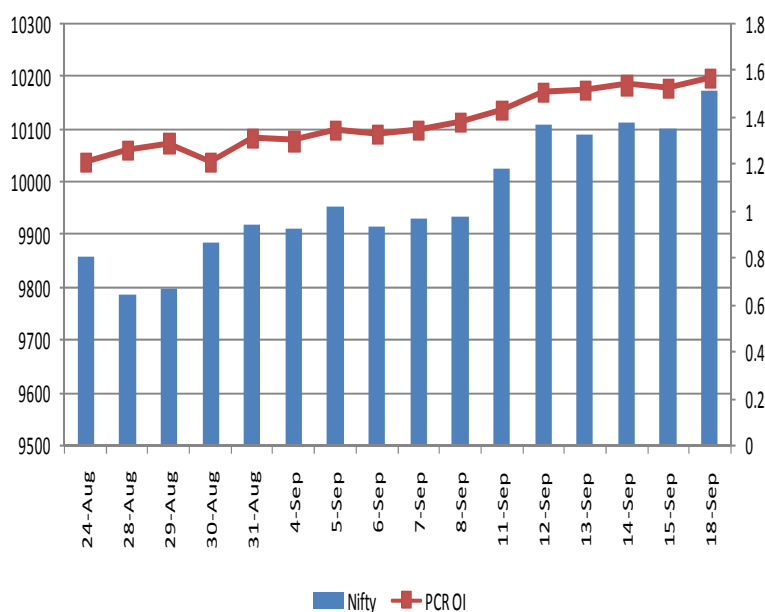
OI Concentration

PUT OPTION		CALL OPTION	
Strike Price	Open Interest	Strike Price	Open Interest
10200	5296650	10500	6404400
10000	4958400	10400	5104050
10300	4641525	10600	4250850
10100	2763975	10300	4031025
9900	2182350	10700	3062550

Highest Change in OI

PUT OPTION		CALL OPTION	
Strike Price	Change in OI	Strike Price	Change in OI
10200	664950	10500	408750
10250	353100	10300	306750
10000	300600	10400	224100
10300	244425	10350	144300
10050	39150	10800	94800

Nifty Future Price V/S PCR-OI



Technical Trend

Stock Analysis

Long Build-up	Long Unwinding	Short Build-up	Short Covering
ADANI PORTS	BANKINDIA	ASHOKLEY	APOLLOTYRE
BATAINDIA	CAPF	BANKBARODA	CEATLTD
CESC	DCBBANK	CASTROLIND	GODFRYPHLP
HINDPETRO	IBULHSGFIN	GLENMARK	HEROMOTOCO
MUTHOOTFIN	JUBLFOOD	JETAIRWAYS	MANAPPURAM
TATAMOTORS	NIITTECH	RBLBANK	SBIN

STATISTICS

Highest Premium

SCRIPS	Premium %	Price change %
RCOM	1.43	3.33
IFCI	0.61	2.91
INFIBEAM	0.59	-0.22
AMBUJACEM	0.55	1.51
ALBK	0.51	0.13

Highest Discount

SCRIPS	Premium %	Price change %
APOLLOHOSP	-0.94	3.76
GAIL	-0.20	1.98
BPCL	-0.19	-0.74
HDIL	-0.16	-2.07
CONCOR	-0.15	0.17

TOP 5 VOLUME GAINER FOR THE SESSION

SCRIPS	CP AS ON 21/11/2017	CP AS ON 22/11/2017	Change (%)	Vol AS ON 21/11/2017	Vol AS ON 22/11/2017	Change (%)
ZEEL	534.95	563.85	5.40	1120	10402	828.75%
BATAINDIA	743.9	749.45	0.75	1056	9763	824.53%
CESC	1011.6	1036.8	2.49	1424	7341	415.52%
JPASSOCIAT	18.8	19.3	2.66	360	1770	391.67%
IFCI	24.05	24.9	3.53	296	1453	390.88%

TOP 5 VOLUME LOSER FOR THE SESSION

SCRIPS	CP AS ON 21/11/2017	CP AS ON 22/11/2017	Change (%)	Vol AS ON 21/11/2017	Vol AS ON 22/11/2017	Change (%)
JUSTDIAL	553.95	529.3	-4.45	6546	843	-87.12%
INFIBEAM	179.75	179.1	-0.36	1991	351	-82.37%
BIOCON	422.95	410.25	-3.00	10379	2588	-75.07%
TV18BRDCST	46.95	46.5	-0.96	2866	732	-74.46%
AJANTPHARM	1341.85	1347.3	0.41	4289	1288	-69.97%

Technical Trend

TOP 10 OPEN INTEREST GAINER FOR THE SESSION

SCRIPS	CP AS ON 21/11/2017	CP AS ON 22/11/2017	Change (%)	OI AS ON 21/11/2017	OI AS ON 22/11/2017	Change (%)
KAJARIACER	715.55	720.75	0.73	1180800	1993600	68.83
L&TFH	188.45	178.75	-5.15	35163000	54382500	54.66
SUNTV	838.5	878.1	4.72	5410000	6955000	28.56
SHREECEM	17522.7	17163.7	-2.05	41600	53300	28.13
BATAINDIA	743.9	749.45	0.75	2473900	3086600	24.77
NTPC	180.35	182.25	1.05	30800000	37600000	22.08
MOTHERSUMI	359.1	346	-3.65	12024100	14517850	20.74
ZEEL	534.95	563.85	5.40	6349200	7374900	16.15
POWERGRID	208.8	207.15	-0.79	24612000	27516000	11.80
LT	1230.15	1224	-0.50	13330500	14874000	11.58

TOP 10 OPEN INTEREST LOSER FOR THE SESSION

SCRIPS	CP AS ON 21/11/2017	CP AS ON 22/11/2017	Change (%)	OI AS ON 21/11/2017	OI AS ON 22/11/2017	Change (%)
JUSTDIAL	553.95	529.3	-4.45	3725000	3167000	-14.98
HDIL	64.5	61.3	-4.96	36373000	32285000	-11.24
IBREALEST	234.05	213.2	-8.91	43275000	38610000	-10.78
ICIL	128.5	122.45	-4.71	12225500	10916500	-10.71
PAGEIND	23052.05	22582.95	-2.03	39450	35500	-10.01
AJANTPHARM	1341.85	1347.3	0.41	1163400	1049500	-9.79
DLF	228.15	219.95	-3.59	46465000	42265000	-9.04
STAR	819.9	830.15	1.25	5406500	4924500	-8.92
RELCAPITAL	446.25	455.85	2.15	12802500	11779500	-7.99
HEROMOTOCO	3667.2	3673.1	0.16	1673200	1541600	-7.87

Technical Trend

Pivot Report– Nifty 50

Symbol	PClose	Support3	Support2	Support1	Pivot	Resist1	Resist2	Resist3
ADANIPTS	401.0	387.3	391.7	396.3	400.7	405.3	409.7	414.3
AMBUJACEM	274.5	265.6	269.6	272.0	276.0	278.4	282.4	284.8
ASIANPAINT	1171.3	1132.3	1149.2	1160.2	1177.1	1188.1	1205.0	1216.0
AUOPHARMA	708.8	686.7	696.7	702.8	712.8	718.9	728.9	735.0
AXISBANK	542.4	519.3	529.9	536.2	546.8	553.0	563.6	569.9
BAJAJ-AUTO	3206.9	3131.4	3162.3	3184.6	3215.5	3237.8	3268.7	3291.0
BAJFINANCE	1787.4	1732.4	1755.3	1771.3	1794.2	1810.2	1833.1	1849.1
BHARTIARTL	493.5	472.8	481.9	487.7	496.8	502.6	511.7	517.5
BOSCHLTD	18965.9	18110.7	18515.3	18740.6	19145.3	19370.6	19775.2	20000.5
BPCL	504.0	485.8	490.6	497.3	502.2	508.9	513.7	520.4
CIPLA	608.6	586.9	593.8	601.2	608.0	615.4	622.3	629.7
COALINDIA	272.8	265.3	267.0	269.9	271.7	274.6	276.3	279.2
DRREDDY	2322.6	2244.1	2273.6	2298.1	2327.5	2352.0	2381.5	2406.0
EICHERMOT	30707.5	30185.4	30342.8	30525.1	30682.5	30864.9	31022.3	31204.6
GAIL	444.8	426.2	434.5	439.6	447.9	453.0	461.3	466.4
HCLTECH	840.0	815.9	827.2	833.6	844.9	851.3	862.6	869.0
HDFC	1705.5	1657.5	1672.9	1689.2	1704.6	1720.9	1736.3	1752.6
HDFCBANK	1825.6	1787.9	1800.5	1813.0	1825.7	1838.2	1850.8	1863.3
HEROMOTOCO	3631.2	3528.9	3575.7	3603.4	3650.2	3677.9	3724.7	3752.4
HINDALCO	258.9	249.6	253.2	256.0	259.6	262.5	266.1	268.9
HINDPETRO	414.8	400.5	405.7	410.3	415.5	420.1	425.3	429.9
HINDUNILVR	1278.2	1241.1	1256.2	1267.2	1282.3	1293.3	1308.4	1319.4
IBULHSGFIN	1184.0	1144.6	1159.9	1172.0	1187.3	1199.3	1214.6	1226.7
ICICIBANK	325.1	313.3	318.5	321.8	327.1	330.4	335.6	338.9
INDUSINDBK	1631.9	1598.6	1607.2	1619.5	1628.1	1640.4	1649.0	1661.3
INFRATEL	380.2	362.6	369.6	374.9	381.8	387.1	394.1	399.4
INFY	971.0	941.9	953.5	962.2	973.9	982.6	994.2	1002.9
IOC	395.2	384.0	387.8	391.5	395.2	398.9	402.7	406.4
ITC	258.0	253.3	254.7	256.3	257.7	259.3	260.7	262.3
KOTAKBANK	1023.2	999.4	1006.9	1015.0	1022.5	1030.7	1038.2	1046.3
LT	1222.8	1187.6	1201.3	1212.1	1225.8	1236.5	1250.2	1261.0
LUPIN	829.6	811.7	819.4	824.5	832.2	837.3	845.0	850.1
M&M	1416.8	1397.8	1404.9	1410.8	1417.9	1423.8	1430.9	1436.8
MARUTI	8348.4	8112.3	8165.2	8256.8	8309.6	8401.2	8454.1	8545.7
NTPC	177.6	171.8	174.0	175.8	177.9	179.7	181.9	183.7
ONGC	177.6	169.1	173.1	175.4	179.4	181.7	185.7	188.0
POWERGRID	208.6	205.4	206.6	207.6	208.8	209.8	211.0	212.0
RELIANCE	911.9	888.9	898.7	905.3	915.1	921.7	931.5	938.1
SBIN	337.5	322.7	329.4	333.4	340.1	344.1	350.8	354.8
SUNPHARMA	517.1	498.6	504.3	510.7	516.4	522.8	528.5	534.9
TATAMOTORS	421.8	411.6	414.3	418.1	420.8	424.5	427.2	431.0
TATASTEEL	701.2	678.4	686.2	693.7	701.5	709.0	716.8	724.3
TCS	2707.3	2646.7	2675.2	2691.2	2719.7	2735.7	2764.2	2780.2
TECHM	484.6	459.2	470.9	477.7	489.4	496.2	507.9	514.7
ULTRACEMCO	4267.1	4114.6	4178.0	4222.5	4285.9	4330.4	4393.8	4438.3
UPL	724.2	698.0	710.3	717.2	729.5	736.4	748.7	755.6
VEDL	307.6	295.6	300.3	304.0	308.7	312.3	317.0	320.7
WIPRO	295.2	289.1	291.8	293.5	296.2	297.8	300.5	302.2
YESBANK	306.1	293.4	299.2	302.7	308.5	312.0	317.8	321.3
ZEEL	535.5	520.3	526.6	531.1	537.4	541.9	548.2	552.7



BP WEALTH

Technical Research Desk

Tel: +91 22 61596173

Institutional Sales Desk

Tel: +91 22 61596403/04/05

Disclaimer Appendix

Analyst s holding in the Stock : Nil

Analyst s Certification:

We analysts and the authors of this report, hereby certify that all of the views expressed in this research report accurately reflect our personal views about any and all of the subject issuer s or securities. We also certify that no part of our compensation was, is, or will be directly or indirectly related to the specific recommendation s or view s in this report. Analysts aren't registered as research analysts by FINRA and might not be an associated person of the BP Equities Pvt. Ltd. Institutional Equities.

General Disclaimer

This report has been prepared by the research department of BP EQUITIES Pvt. Ltd, is for information purposes only. This report is not construed as an offer to sell or the solicitation of an offer to buy or sell any security in any jurisdiction where such an offer or solicitation would be illegal.

BP EQUITIES Pvt. Ltd have exercised due diligence in checking the correctness and authenticity of the information contained herein, so far as it relates to current and historical information, but do not guarantee its accuracy or completeness. The opinions expressed are our current opinions as of the date appearing in the material and may be subject to change from time to time. Prospective investors are cautioned that any forward looking statement are not predictions and are subject to change without prior notice.

Recipients of this material should rely on their own investigations and take their own professional advice. BP EQUITIES Pvt. Ltd or any of its affiliates or employees shall not be in any way responsible for any loss or damage that may arise to any person from any inadvertent error in the information contained in this report. BP EQUITIES Pvt. Ltd. or any of its affiliates or employees do not provide, at any time, any express or implied warranty of any kind, regarding any matter pertaining to this report, including without limitation the implied warranties of merchantability, fitness for a particular purpose, and non-infringement. The recipients of this report should rely on their own investigations.

BP EQUITIES Pvt. Ltd and/or its affiliates and/or employees may have interests/ positions, financial or otherwise in the securities mentioned in this report. Opinions expressed are our current opinions as of the date appearing on this material only. While we endeavor to update on a reasonable basis the information discussed in this material, there may be regulatory, compliance, or other reasons that prevent us from doing so.

This report is not directed to or intended for display, downloading, printing, reproducing or for distribution to or use by any person in any locality, state and country or other jurisdiction where such distribution, publication or use would be contrary to the law or regulation or would subject to BP EQUITIES Pvt. Ltd or any of its affiliates to any registration or licensing requirement within such jurisdiction.

Corporate Office:

4th floor,
Rustom Bldg,
29, Veer Nariman Road, Fort,
Mumbai-400001
Phone- +91 22 6159 6464
Fax-+91 22 6159 6160
Website- www.bpwealth.com

Registered Office:

24/26, 1st Floor, Cama Building,
Dalal street, Fort,
Mumbai-400001
BP Equities Pvt. Ltd.
CIN No: U67120MH1997PTC107392