

Technical Trend

INTRADAY TRADER'S PICKS

Sr.No.	STOCK	CLOSE	S1	S2	S3	R1	R2	R3	RECOMMENDATION
1	MFSL	581.5	578	571	564	592	599	606	BUY ABOVE 585
2	THOMASCOOK	238.95	236	232	228	246	250	254	BUY ABOVE 241
3	TWL	139.85	139	136	133	145	148	151	BUY ABOVE 142
4	UJJIVAN	329.20	326	322	318	336	340	344	BUY ABOVE 331
5	ZEEL	549	545	539	533	557	563	569	BUY ABOVE 551

Technical Trend

DERIVATIVES

INDICES SNAPSHOT

SCRIPS	CP AS ON 27/10/2017	CP AS ON 30/10/2017	Change (%)	OI AS ON 27/10/2017	OI AS ON 30/10/2017	Change (%)
BANKNIFTY	24981.25	25066.35	0.34	1735200	1798200	3.63
NIFTY	10356.85	10388.45	0.31	23779350	24357450	2.43
NIFTYIT	10841	10837	-0.04	30450	31950	4.93

Derivative Highlights

- ⇒ Nifty Future closed with a premium of 24 points.
- ⇒ Nifty Future Open Interest increased by 2.43%. BankNifty Future Open Interest increased by 3.63%.
- ⇒ Nifty PCR - OI decreased from 1.42 to 1.37, Nifty Bank PCR - OI increased from 1.12 to 1.09
- ⇒ FII Sold Rs 186.04 crore while DII Bought Rs. 139.68 crore in the Cash Segment. FII Bought Rs. 191.31 crore in Index Futures and Bought Rs.483.60 crore in index options, while in Future they Bought Rs. 124.81 crore and Sold Rs 99.59 crore in stock options
- ⇒ Among Index Option space, Highest Open Interest concentration was seen in 1000 & 10200 Strike price among the PE options. Where as among CE Options Highest Open Interest Concentration was seen in 10400 & 10500 Strike price.
- ⇒ Highest Open Interest Build Up among the PE options was seen in 10100 & 10300 Strike price. Among CE options highest build up was seen in 10400 & 11000 Strike price.

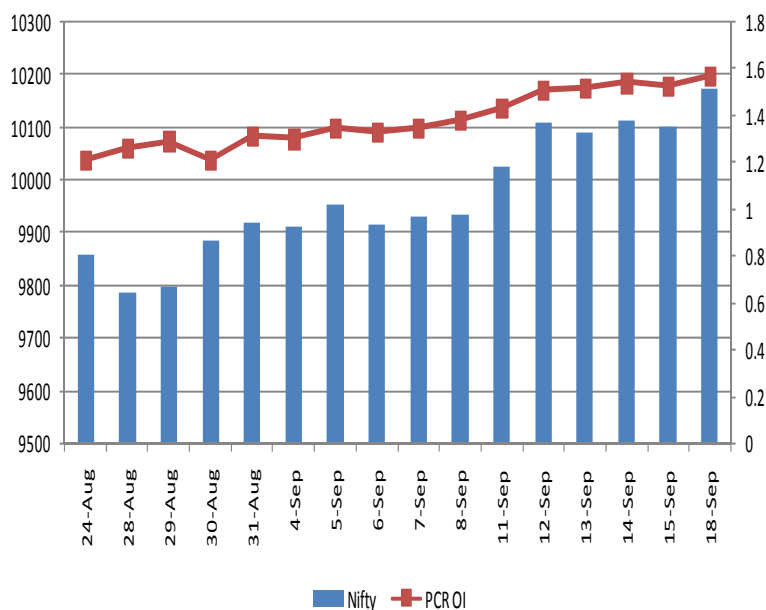
OI Concentration

PUT OPTION		CALL OPTION	
Strike Price	Open Interest	Strike Price	Open Interest
10000	4898625	10400	3251250
10200	3828600	10500	2983875
10300	3499425	10700	2427600
10100	3317475	10300	2379075
9900	2283375	10600	2259525

Highest Change in OI

PUT OPTION		CALL OPTION	
Strike Price	Change in OI	Strike Price	Change in OI
10100	888750	10400	273225
10300	575625	11000	122625
10400	551925	10800	107925
10200	358500	10900	107475
10000	253500	10600	21375

Nifty Future Price V/S PCR-OI



Technical Trend

Stock Analysis

Long Build-up	Long Unwinding	Short Build-up	Short Covering
ACC	TATAELXSI	ASIANPAINT	ADANIENT
BATAINDIA		BANKBARODA	BALRAMCHIN
DHFL		HCLTECH	GODREJIND
GLENMARK		INFY	ICICIPRULI
JUSTDIAL		JSWSTEEL	NBCC
SBIN		WOCKPHARMA	RELCAPITAL

STATISTICS

Highest Premium

SCRIPS	Premium %	Price change %
JPASSOCIAT	1.04	3.49
CHOLAFIN	0.74	0.06
IDEA	0.69	-1.68
PTC	0.66	-0.57
IFCI	0.65	0.66

Highest Discount

SCRIPS	Premium %	Price change %
COALINDIA	-0.16	1.53
COLPAL	-0.15	0.08
NTPC	-0.14	0.34
JSWENERGY	-0.13	4.47
BATAINDIA	-0.07	2.43

TOP 5 VOLUME GAINER FOR THE SESSION

SCRIPS	CP AS ON 27/10/2017	CP AS ON 30/10/2017	Change (%)	Vol AS ON 27/10/2017	Vol AS ON 30/10/2017	Change (%)
KAJARIACER	689.1	690.35	0.18	327	3032	827.22%
LUPIN	1005.15	1032.9	2.76	8230	49522	501.73%
JETAIRWAYS	529	573.05	8.33	1921	11445	495.78%
BATAINDIA	783.55	827	5.55	972	4624	375.72%
OIL	348.15	369	5.99	466	2142	359.66%

TOP 5 VOLUME LOSER FOR THE SESSION

SCRIPS	CP AS ON 27/10/2017	CP AS ON 30/10/2017	Change (%)	Vol AS ON 27/10/2017	Vol AS ON 30/10/2017	Change (%)
JSWENERGY	86.85	87.45	0.69	6685	686	-89.74%
CUMMINSIND	912.45	913.5	0.12	2117	283	-86.63%
PVR	1431.1	1408.4	-1.59	3850	778	-79.79%
JISLJALEQS	100.95	101.15	0.20	4577	1119	-75.55%
IOC	410.95	415.65	1.14	20302	5445	-73.18%

Technical Trend

TOP 10 OPEN INTEREST GAINER FOR THE SESSION

SCRIPS	CP AS ON 27/10/2017	CP AS ON 30/10/2017	Change (%)	OI AS ON 27/10/2017	OI AS ON 30/10/2017	Change (%)
BATAINDIA	783.55	827	5.55	1434400	2009700	40.11
KAJARIACER	689.1	690.35	0.18	943200	1215200	28.84
CANBK	406.4	416.25	2.42	5292144	6605928	24.83
UBL	994.55	1047.95	5.37	1432900	1758400	22.72
JETAIRWAYS	529	573.05	8.33	5104800	6175200	20.97
JUSTDIAL	414.05	442.55	6.88	4291200	4934400	14.99
ESCORTS	744.55	778.75	4.59	2410100	2765400	14.74
BERGEPAIN	275.4	268.75	-2.41	1258400	1438800	14.34
PAGEIND	19879.7	19899.95	0.10	18800	21350	13.56
DALMIABHA	2904.35	2982.8	2.70	543900	612300	12.58

TOP 10 OPEN INTEREST LOSER FOR THE SESSION

SCRIPS	CP AS ON 27/10/2017	CP AS ON 30/10/2017	Change (%)	OI AS ON 27/10/2017	OI AS ON 30/10/2017	Change (%)
TATAGLOBAL	222.15	227.4	2.36	36247500	32643000	-9.94
NIITTECH	646.15	646.4	0.04	742500	696000	-6.26
CHENNPETRO	451.1	463.05	2.65	1692000	1593000	-5.85
HCC	40.45	40.05	-0.99	26268000	25023000	-4.74
COLPAL	1060.15	1066.75	0.62	1522500	1464400	-3.82
RELCAPITAL	579.85	587.25	1.28	11981250	11535000	-3.72
ICICIPRULI	394.5	404.5	2.53	6086600	5868200	-3.59
RBLBANK	526.55	526.75	0.04	6146000	5941000	-3.34
RELINFRA	509.2	504.7	-0.88	10914800	10553400	-3.31
PEL	2729.15	2777.65	1.78	1420500	1373700	-3.29

Pivot Report– Nifty 50

Symbol	PClose	Support3	Support2	Support1	Pivot	Resist1	Resist2	Resist3
ADANIPTS	429.8	417.5	422.7	426.2	431.4	434.9	440.1	443.6
AMBUJACEM	283.6	271.4	275.0	279.3	282.8	287.1	290.7	295.0
ASIANPAINT	1179.9	1153.3	1165.1	1172.5	1184.3	1191.7	1203.5	1210.9
AUOPHARMA	767.2	740.8	748.6	757.9	765.7	775.0	782.8	792.1
AXISBANK	484.0	473.3	477.5	480.7	484.9	488.1	492.3	495.5
BAJAJ-AUTO	3282.2	3214.6	3244.8	3263.5	3293.7	3312.4	3342.6	3361.3
BAJFINANCE	1804.3	1750.9	1774.3	1789.3	1812.8	1827.8	1851.2	1866.2
BHARTIARTL	492.9	475.1	480.6	486.7	492.2	498.4	503.9	510.0
BOSCHLTD	21259.1	20935.5	21068.6	21163.8	21296.9	21392.1	21525.2	21620.4
BPCL	536.3	496.4	510.5	523.4	537.5	550.3	564.4	577.3
CIPLA	626.1	601.6	608.1	617.1	623.5	632.5	639.0	648.0
COALINDIA	288.9	279.9	282.5	285.7	288.3	291.5	294.1	297.3
DRREDDY	2438.5	2284.1	2325.6	2382.0	2423.5	2480.0	2521.5	2577.9
EICHERMOT	32371.1	31330.7	31590.4	31980.7	32240.4	32630.7	32890.4	33280.7
GAIL	475.7	456.8	462.0	468.9	474.1	481.0	486.2	493.1
HCLTECH	836.4	793.0	812.5	824.4	843.9	855.9	875.4	887.3
HDFC	1705.8	1648.6	1666.9	1686.3	1704.6	1724.0	1742.3	1761.7
HDFCBANK	1815.0	1776.0	1784.2	1799.6	1807.8	1823.2	1831.4	1846.8
HEROMOTOCO	3833.0	3769.4	3785.5	3809.3	3825.4	3849.1	3865.2	3889.0
HINDALCO	273.2	265.2	267.8	270.5	273.2	275.9	278.5	281.2
HINDPETRO	454.8	436.4	444.9	449.9	458.4	463.3	471.8	476.8
HINDUNILVR	1234.2	1180.2	1205.1	1219.7	1244.6	1259.1	1284.0	1298.6
IBULHSGFIN	1261.1	1217.7	1229.6	1245.4	1257.3	1273.0	1284.9	1300.7
ICICIBANK	300.6	281.2	288.2	294.4	301.4	307.6	314.6	320.8
INDUSINDBK	1620.8	1588.2	1603.2	1612.0	1626.9	1635.7	1650.7	1659.5
INFRATEL	429.7	409.3	415.5	422.6	428.8	435.9	442.1	449.2
INFY	931.1	912.2	920.2	925.7	933.6	939.1	947.0	952.5
IOC	416.3	404.9	409.2	412.7	417.0	420.5	424.8	428.3
ITC	265.2	255.1	259.3	262.2	266.4	269.4	273.6	276.5
KOTAKBANK	1028.9	1008.1	1014.3	1021.6	1027.8	1035.1	1041.3	1048.6
LT	1237.0	1211.7	1217.9	1227.4	1233.7	1243.2	1249.4	1258.9
LUPIN	1026.0	884.8	938.7	982.3	1036.2	1079.8	1133.7	1177.3
M&M	1374.8	1343.1	1356.6	1365.7	1379.2	1388.3	1401.8	1410.9
MARUTI	8195.3	8030.3	8096.8	8146.0	8212.5	8261.7	8328.2	8377.4
NTPC	182.6	181.0	181.6	182.1	182.6	183.1	183.7	184.2
ONGC	186.6	179.3	182.6	184.6	188.0	190.0	193.3	195.3
POWERGRID	212.4	208.7	210.3	211.3	212.9	214.0	215.6	216.6
RELIANCE	942.5	918.6	924.6	933.6	939.6	948.5	954.5	963.5
SBIN	312.0	295.9	303.2	307.6	315.0	319.4	326.7	331.1
SUNPHARMA	553.1	532.5	538.3	545.7	551.5	558.9	564.7	572.1
TATAMOTORS	436.6	416.9	422.6	429.6	435.3	442.3	448.0	455.0
TATASTEEL	718.3	687.4	700.3	709.3	722.1	731.1	744.0	753.0
TCS	2616.2	2553.6	2567.7	2591.9	2606.0	2630.2	2644.3	2668.5
TECHM	485.6	462.5	468.3	476.9	482.7	491.4	497.2	505.8
ULTRACEMCO	4472.3	4383.6	4406.8	4439.5	4462.8	4495.5	4518.7	4551.4
UPL	824.4	777.9	797.3	810.9	830.3	843.8	863.2	876.8
VEDL	341.0	333.8	336.8	338.9	341.8	343.9	346.9	349.0
WIPRO	293.3	287.2	289.6	291.4	293.9	295.7	298.1	299.9
YESBANK	314.9	300.1	304.1	309.5	313.5	318.8	322.8	328.2
ZEEL	549.0	532.2	536.2	542.6	546.7	553.1	557.1	563.5



BP WEALTH

Technical Research Desk

Tel: +91 22 61596173

Institutional Sales Desk

Tel: +91 22 61596403/04/05

Disclaimer Appendix

Analyst s holding in the Stock : Nil

Analyst s Certification:

We analysts and the authors of this report, hereby certify that all of the views expressed in this research report accurately reflect our personal views about any and all of the subject issuer s or securities. We also certify that no part of our compensation was, is, or will be directly or indirectly related to the specific recommendation s or view s in this report. Analysts aren't registered as research analysts by FINRA and might not be an associated person of the BP Equities Pvt. Ltd. Institutional Equities.

General Disclaimer

This report has been prepared by the research department of BP EQUITIES Pvt. Ltd, is for information purposes only. This report is not construed as an offer to sell or the solicitation of an offer to buy or sell any security in any jurisdiction where such an offer or solicitation would be illegal.

BP EQUITIES Pvt. Ltd have exercised due diligence in checking the correctness and authenticity of the information contained herein, so far as it relates to current and historical information, but do not guarantee its accuracy or completeness. The opinions expressed are our current opinions as of the date appearing in the material and may be subject to change from time to time. Prospective investors are cautioned that any forward looking statement are not predictions and are subject to change without prior notice.

Recipients of this material should rely on their own investigations and take their own professional advice. BP EQUITIES Pvt. Ltd or any of its affiliates or employees shall not be in any way responsible for any loss or damage that may arise to any person from any inadvertent error in the information contained in this report. BP EQUITIES Pvt. Ltd. or any of its affiliates or employees do not provide, at any time, any express or implied warranty of any kind, regarding any matter pertaining to this report, including without limitation the implied warranties of merchantability, fitness for a particular purpose, and non-infringement. The recipients of this report should rely on their own investigations.

BP EQUITIES Pvt. Ltd and/or its affiliates and/or employees may have interests/ positions, financial or otherwise in the securities mentioned in this report. Opinions expressed are our current opinions as of the date appearing on this material only. While we endeavor to update on a reasonable basis the information discussed in this material, there may be regulatory, compliance, or other reasons that prevent us from doing so.

This report is not directed to or intended for display, downloading, printing, reproducing or for distribution to or use by any person in any locality, state and country or other jurisdiction where such distribution, publication or use would be contrary to the law or regulation or would subject to BP EQUITIES Pvt. Ltd or any of its affiliates to any registration or licensing requirement within such jurisdiction.

Corporate Office:

4th floor,
Rustom Bldg,
29, Veer Nariman Road, Fort,
Mumbai-400001
Phone- +91 22 6159 6464
Fax-+91 22 6159 6160
Website- www.bpwealth.com

Registered Office:

24/26, 1st Floor, Cama Building,
Dalal street, Fort,
Mumbai-400001
BP Equities Pvt. Ltd.
CIN No: U67120MH1997PTC107392