



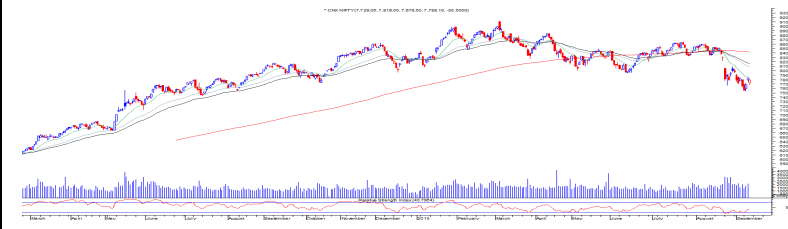
TECHNICALS

MARKET OUTLOOK

NIFTY (7788) CNX Nifty opened negative and tumbled down by around 90 points in the opening trade and drifted towards 7678 levels. However, throughout the day every decline was being bought and the index recouped most of the opening losses by moving towards 7800 levels. It headed towards its 13 DMA but finally ended the day with the loss of around 30 points. Now it has to hold above 7765-7777 zones the continue an up move towards 7850 and 7900 zones while if it fails to hold 7750 levels then profit booking decline may be seen towards next major support of 7700 and 7665 levels. The markets will be watching IIP data, CPI data, FED meet and RBI policy so traders are required to remain cautious for next coming sessions.

CNX NIFTY

COMMENTS



SENSEX (25622) BSE Sensex opened negative with the deep cut of around 200 points and fell down towards 25285 levels owing to the weakness in global cues. However due to buying activities it pared most of the intraday losses and headed towards 25740 levels. Finally the day ended with the loss of around 100 points. Now till the bulls manage to overpower the bears and hold the index above 25600 levels, the up move may continue towards 25800 and 26000 zones, while if it fails to hold 25500 zones then bears may again force the index to drift towards 25250 then 25000 zones.

S&P BSE-SENSEX

PIVOT TABLE



	NIFTY	SENSEX	BANK NIFTY	CNX IT
HIGH	7820	25734	16712	11469
LOW	7679	25288	16192	11292
CLOSE	7788	25622	16598	11397
PIVOT	7762	25548	16500	11386
R 1	7846	25808	16809	11480
R 2	7904	25994	17020	11563
S 1	7704	25362	16289	11303
S 2	7621	25102	15981	11209



Friday, September 11, 2015

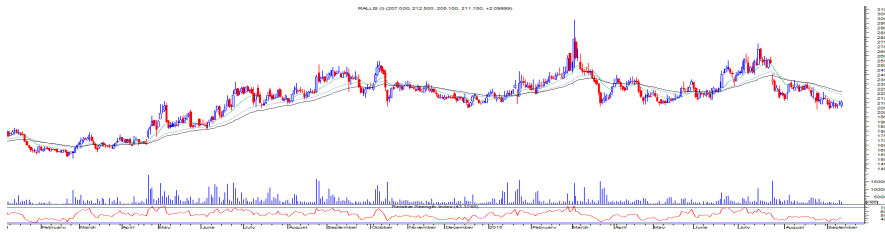
TECHNICAL CALLS

RALLIS: Rs. 211

EXECUTION PRICE RANGE
Buy Between Rs. 206 To Rs.208

STOP LOSS
203.00

TARGET
228.00



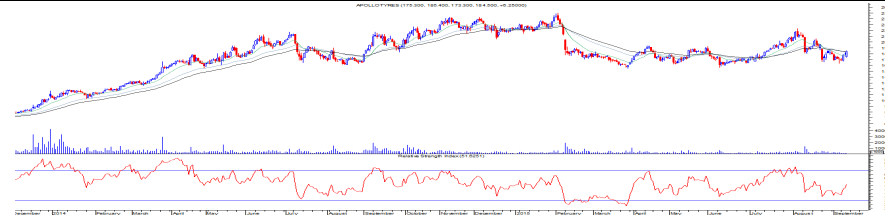
RALLIS has taken multiple support at 203-205 zones and turning from the lower band of the trading range. It has given highest close in last eight trading sessions, looks attractive in terms of risk reward ratio and as per the recent price behavior it has potential to move towards 228 and higher levels. Thus traders can buy the stock with stop loss of 203 for the upside immediate target of 228 levels.

APOLLOTYRES: Rs. 185

EXECUTION PRICE RANGE
Buy Between Rs.181 To Rs.183

STOP LOSS
177.00

TARGET
194.00



APOLLOTYRES surpassed the falling supply trend line and gave a strong breakout with the highest daily close of last thirteen trading sessions. It has made a strong base and crossed its 50 DMA. Thus traders can buy the stock with stop loss of 177 for the upside immediate target of 194 levels.



Friday, September 11, 2015

INDIAN INDICES					
INDICES	CLOSE	CHANGE	% CHG		
SENSEX	25622	-97.41	-0.38		
NIFTY	7788	-30.50	-0.39		
TURNOVER & MARKET CAP					
Rs. (Cr.)	YEST'DAY	PREV.DAY	% CHG		
BSE Cash	2953	2668	10.67		
NSE Cash	15364	17185	-10.60		
Derivatives(bn)	2179	2191	-0.53		
INSTITUTIONAL ACTIVITIES					
DII Equity	1195	447	167.00		
FII Equity	-452	-660	-31.46		
FII F&O	2033	-1129	-280.02		
ADVANCES & DECLINES					
EXCHANGE	ADV	DECLINES	TOTAL		
BSE	1080	722	1802		
NSE	592	896	1488		
INDIAN ADR's					
ADR	CLOSE	PREV.CLOSE	% CHG		
Infosys	17.44	17.27	-0.97		
HDFC Bank	56.90	56.88	-0.04		
Wipro	11.75	11.47	-2.38		
ICICI Bank	8.42	8.39	-0.36		
Sterlite Inds.	14.28	14.18	-0.70		
Dr. Reddy's Lab	61.70	60.59	-1.80		
SECTORAL INDICES					
BSE			NSE		
INDICES	CLOSE	%	INDICES	CLOSE	%
CNX Bank	16598	-0.20	BSE MIDcap	10503	0.65
CNX IT	11397	-0.94	BSE SmallCap	10632	-0.40
CNX Realty	163	-0.61	BSE 200	3287	-0.20
CNX FMCG	19307	0.00	OTHER IMP.DATA		
CNX Infra	2905	0.46	10 Yr Gsec yield		7.78
CNX Pharma	12315	-0.36	RS/\$		66.49
BSE Auto	17699	0.70	\$ Index		96.06
BSE Metal	7310	-0.77	Brent Crude (\$)		47.86
CNX MNC	9431	-0.07	Gold (\$)		1106.54
BSE 500	10278	-0.21	Silver (\$)		14.71
Nifty Midcap	3062	-0.07	PE	CURRENT	AVG
BSE 100	7923	-0.26	NIFTY	20.3	19.7

TOP OUTPERFORMERS					
SENSEX			NIFTY		
SYMBOL	CLOSE	%	SYMBOL	CLOSE	%
Tata power	60.9	2.87	TATA POWER	61.0	2.96
Tata Motors	354.3	2.71	TATA MOTORS	354.1	2.67
BHEL	216.6	1.74	BPCL	839.7	2.37
Bajaj Auto	2302.5	1.47	BAJAJ AUTO	2318.0	2.11
L&T	1613.3	1.31	BHEL	217.1	2.02
TOP UNDERPERFORMERS					
SENSEX			NIFTY		
SYMBOL	CLOSE	%	SYMBOL	CLOSE	%
JP Asso.	9.4	-3.20	NMDC	101.2	-2.93
Hindalco	76.6	-2.61	POWERGRID	123.4	-2.10
Jindal Steel	60.8	-2.49	HDFC	1162.8	-2.01
HDFC	1164.2	-1.89	SBI	227.5	-1.81
ONGC	226.7	-1.71	DR REDDYS	3973.6	-1.67
BSE 500					
TOP OUTPERFORMERS			TOP UNDERPERFORMERS		
SYMBOL	CLOSE	%	SYMBOL	CLOSE	%
Suven Life Sciences Ltd	231.6	11.94	Sun TV Network L	344.4	-7.29
Unichem Laboratories Ltd	282.2	8.27	Star Ferro and Ce	124.5	-6.08
Wockhardt Ltd	1316.2	8.12	Birla Corp Ltd	462.8	-5.01
Ceat Ltd	1217.7	6.91	Sunrise Asian Ltd	148.0	-4.95
Welspun Corp Ltd	105.3	6.42	Metalyst Forgings	35.8	-4.92
Fortis Healthcare Ltd	167.2	6.40	Torrent Pharmace	1417.6	-4.83
Bajaj Holdings & Investment Ltd	1601.6	6.34	Monsanto India Ltd	2306.4	-4.81
Container Corp Of India Ltd	1491.6	6.29	Cox & Kings Ltd	217.6	-4.67
Shree Cement Ltd	11173.7	5.21	UPL Ltd	496.4	-4.53
JSW Energy Ltd	82.0	5.00	PMC Fincorp Ltd	1.5	-4.52
Lycos Internet Ltd	22.2	4.98	Dishman Pharmac	245.6	-4.36
Kesoram Industries Ltd	95.8	4.87	Whirlpool of India	612.1	-4.10
Aarti Drugs Ltd	540.8	4.74	Bharti Infratel Ltd	390.8	-4.10
J Kumar Infraprojects Ltd	717.7	4.70	Lanco Infratech Lt	3.2	-3.94
Can Fin Homes Ltd	801.8	4.66	Ruchi Soya Indust	31.7	-3.65
Relaxo Footwears Ltd	515.4	4.49	Gujarat Pipavav P	175.2	-3.60
ABG Shipyard Ltd	149.8	4.28	Steel Authority of I	52.3	-3.51
Reliance Communications Ltd	64.9	4.26	DCM Shriram Ltd	108.0	-3.40
Divi's Laboratories Ltd	2160.5	4.15	ISGEC Heavy Eng	5030.1	-3.37
Apollo Hospitals Enterprise Ltd	1405.7	4.10	Century Textiles &	505.9	-3.36
Shriram Transport Finance Co Ltd	871.4	3.87	NHPC Ltd	16.2	-3.29
GlaxoSmithKline Consumer Healthca	6152.0	3.84	Prestige Estates P	204.4	-3.22
Godrej Consumer Products Ltd	1208.4	3.77	Rajesh Exports Ltd	460.7	-3.21
Astral Polytechnic Ltd	433.9	3.64	Bhushan Steel Ltd	47.1	-3.19
Great Eastern Shipping Co Ltd/The	358.6	3.36	Thermax Ltd	895.5	-3.16



Friday, September 11, 2015

TRENDER+ OF NIFTY 50 STOCKS

SCRIP NAME	OPEN	HIGH	LOW	CLOSE	PIVOT	R 1	R 2	S 1	S 2	TRENDER+	DAILY PROJECTED RANGE
ACC	1367	1386	1346	1379	1370	1395	1410	1355	1330	UP	1402 - 1363
AMBUJA CEMENT	210	213	206	211	210	214	217	207	203	UP	216 - 209
ASIAN PAINTS	817	818	800	808	809	817	826	800	791	Flat	813 - 795
AXIS BANK	478	487	472	483	481	489	496	474	466	Flat	492 - 477
BAJAJ AUTO	2240	2320	2215	2318	2284	2354	2389	2248	2179	UP	2372 - 2266
BHARTI AIRTEL	353	356	346	350	351	355	360	346	341	Down	353 - 343
BHEL	207	219	205	217	214	222	227	209	200	Down	224 - 211
BPCL	820	843	818	840	834	849	859	824	809	UP	854 - 829
CAIRN INDIA	145	153	144	152	150	155	158	146	141	Down	157 - 148
CIPLA	649	659	641	654	651	661	669	643	633	UP	665 - 647
COAL INDIA	337	341	334	338	338	341	344	335	331	Down	343 - 336
LUPIN	1817	1830	1785	1818	1811	1837	1856	1792	1766	UP	1846 - 1802
Dr.REDDY'S LABS	4018	4044	3959	3974	3992	4025	4077	3941	3908	UP	4009 - 3924
GAIL INDIA	287	294	287	292	291	295	298	288	284	Down	297 - 290
GRASIM INDS	3460	3482	3425	3466	3458	3490	3515	3433	3401	Flat	3502 - 3445
HCL TECH	933	940	909	916	922	934	953	903	891	Down	928 - 899
HDFC	1168	1175	1150	1163	1162	1175	1188	1150	1137	Down	1169 - 1143
HDFC BANK	1003	1018	996	1011	1008	1021	1030	999	987	Flat	1025 - 1004
HERO MOTOCORP	2327	2365	2300	2349	2338	2376	2402	2311	2273	Flat	2389 - 2324
HINDALCO	77	77	74	77	76	78	79	75	73	Flat	78 - 75
HINDUSTAN UNILEVER	801	801	778	790	790	802	813	778	766	Down	796 - 772
ICICI BANK	260	270	256	267	265	273	278	259	251	Flat	276 - 262
IDEA	148	150	145	149	148	151	153	146	143	Flat	152 - 147
IDFC	128	134	127	130	130	134	137	127	124	Flat	134 - 127
INDUSIND BANK	846	878	836	867	860	884	902	842	818	Flat	893 - 851
INFOSYS	1085	1092	1061	1080	1078	1094	1108	1064	1047	Flat	1086 - 1055
ITC	311	316	310	313	313	316	319	311	308	Down	317 - 312
ULTRATECH CEMENT	2931	2994	2901	2964	2953	3006	3047	2912	2860	UP	3026 - 2933
TECH MAHINDRA	532	538	526	534	532	539	544	527	520	Down	542 - 530
KOTAK MAHINDRA BANK	624	640	603	635	626	649	663	612	589	Flat	656 - 619
LARSEN & TOUBRO	1571	1625	1555	1615	1599	1642	1668	1572	1529	Flat	1655 - 1585
MAHINDRA & MAHINDRA	1166	1184	1148	1170	1167	1186	1203	1151	1132	Flat	1195 - 1159
MARUTI SUZUKI	4255	4320	4225	4301	4282	4339	4377	4244	4187	UP	4358 - 4263
NMDC	101	102	99	101	101	103	104	100	98	UP	102 - 99
NTPC	121	121	118	119	119	121	122	118	116	Flat	120 - 117
ONGC	229	230	224	227	227	230	233	224	221	Down	228 - 222
POWERGRID	125	125	121	123	123	125	127	121	119	Down	124 - 120
PUNJAB NATIONAL BANK	132	135	130	134	133	136	138	131	128	Flat	137 - 132
RELIANCE INDS	861	871	856	867	864	873	879	858	849	Flat	876 - 861
ZEE ENTERTAINMENT ENTERP	383	395	376	392	388	400	407	380	369	UP	403 - 384
SAIL	53	54	52	52	52	53	54	51	51	UP	53 - 51
SBI	227	230	224	227	227	230	233	224	221	Flat	232 - 226
VEDANTA Ltd	97	100	95	100	98	102	104	96	93	UP	103 - 97
YES BANK	695	720	688	713	707	726	739	694	675	UP	733 - 701
SUNPHARMA	835	844	825	840	836	848	856	828	817	Down	852 - 832
TATA MOTORS	340	357	331	354	347	363	373	338	322	UP	368 - 343
TATA POWER	59	61	58	61	60	62	63	59	57	Flat	63 - 60
TATA STEEL	236	243	232	240	238	245	250	234	227	UP	247 - 236
TCS	2542	2579	2527	2545	2550	2574	2602	2522	2499	Flat	2588 - 2536
WIPRO	555	561	550	552	554	559	565	548	543	Down	557 - 546



Friday, September 11, 2015

HOW TO TRADE USING THE TRENDER+

CLOSING PRICES

Closing price is the price at which scrip closes on the date mentioned in the report. Traders may initiate their intraday trade on this level. The stock or index should sustain above or below the pivot else you should exit the trade.

TREND

Trend is the level at which the tendency of stocks can be identified. For best results, you can use the 'trender' to trade. A 'weak' trend denoted by "DOWN" means that traders can trade with a negative bias. If the trend is 'strong', denoted by "UP", one can trade with a positive bias on the long side. Base price should be the pivot point price.

IF THE TREND IS UP

Ideally, for a buy position, buy at the pivot point and use S1 as the stop loss for a target of levels around R2 and higher.

IF THE TREND IS DOWN

Ideally, for a sell position, sell at the pivot point and use R1 as a stop loss and S2 or lower levels as a target level.

TRENDER + : This is a broad based technical trend of the stock prevalent, may or may not be necessarily for the day.

DAILY PROJECTED RANGE : Projected Daily high and low are indicative range for the day, if the price moves out of the range the trend in that side may accelerate and turn bullish or bearish.

THE TREND AND THE DAILY PROJECTED RANGE IS BASED ON CERTAIN SIMPLE CALCULATIONS WHICH IS PROVIDED BY BLOOMBERG, EXCLUSIVELY USED BY ANAND RATHI

Disclaimer-This report has been issued by Anand Rathi Share and Stock Brokers Limited (ARSSBL), which is regulated by SEBI. The information herein was obtained from various sources; we do not guarantee its accuracy or completeness. Neither the information nor any opinion expressed constitutes an offer, or an invitation to make an offer, to buy or sell any securities or any options, futures or other derivatives related to such securities ("related investments"). ARSSBL and its affiliates may trade for their own accounts as market maker / jobber and/or arbitrageur in any securities of this issuer(s) or in related investments, and may be on the opposite side of public orders. ARSSBL, its affiliates, directors, officers, and employees may have a long or short position in any securities of this issuer(s) or in related investments. ARSSBL or its affiliates may from time to time perform investment banking or other services for, or solicit investment banking or other business from, any entity mentioned in this report. This research report is prepared for private circulation. It does not have regard to the specific investment objectives, financial situation and the particular needs of any specific person who may receive this report. Investors should seek financial advice regarding the appropriateness of investing in any securities or investment strategies discussed or recommended in this report and should understand that statements regarding future prospects may not be realized. Investors should note that income from such securities, if any, may fluctuate and that each security's price or value may rise or fall. Past performance is not necessarily a guide to future performance. Foreign currency rates of exchange may adversely affect the value, price or income of any security or related investment mentioned in this report.

ANAND RATHI SHARE AND STOCK BROKERS LIMITED

4 th Floor , Silver Metropolis, Jaicoach Compound Opposite Bimbisar Nagar, Goregaon(East), Mumbai - 400063.

Tel No: +91 22 4001 3700 | Fax No: +91 22 4001 3770 | Website: www.rathi.com