



TECHNICALS

MARKET OUTLOOK

NIFTY (7796) CNX Nifty opened positive but failed to cross previous sessions high of 7894.50 and after the early consolidation it lost the hope of recovery and fell towards 7787 levels. It snapped the profit of previous day and formed a bearish engulfing candle as it fell below the previous sessions low of 7804 levels. It gave the lowest close of last nine trading sessions as traders opted to liquidate their position before RBI policy decision. Now the index needs to hold above 7777 levels to witness support based buying towards 7850 and 7900 levels, while if it fails to hold 7750 levels then selling pressure may propel the index to drift towards 7700 and 7665 levels.

CNX NIFTY



COMMENTS

SENSEX (25617) BSE Sensex opened positive but witnessed a choppy session for the initial part of the day. However in the last hour of the trade it shed around 350 points from day's high levels and drifted towards 25590 levels. Finally it ended the day with the loss of around 245 points. Hereafter if the index manages to hold 25600 levels then buying interest will take the index towards 25850 and 26000 levels but if it fails to hold on to 25550 levels, then a fall might be seen taking it to 25250 and 25000 levels.

S&P BSE-SENSEX



PIVOT TABLE

	NIFTY	SENSEX	BANK NIFTY	CNX IT
HIGH	7894	25937	17385	12008
LOW	7788	25594	17074	11819
CLOSE	7796	25617	17100	11841
PIVOT	7826	25716	17186	11889
R 1	7864	25838	17299	11960
R 2	7932	26059	17497	12078
S 1	7758	25495	16988	11771
S 2	7720	25372	16876	11701



Tuesday, September 29, 2015

TECHNICAL CALLS

NIIT TECH: Rs. 480

EXECUTION PRICE RANGE
Buy Between Rs. 468 To Rs. 473

STOP LOSS
458.00

TARGET
500.00



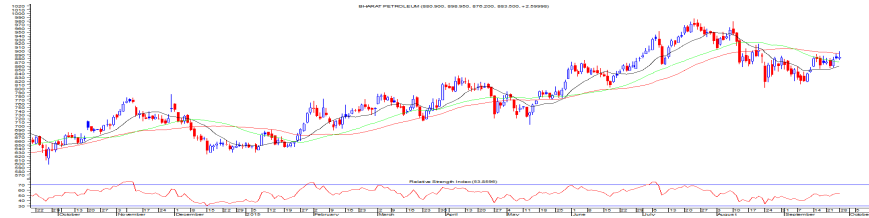
NIIT TECH has taken multiple support near its 430 zones and is moving upwards from last three sessions by crossing its hurdle of 458 and 475 zones. Now the previous hurdle of 458 may act as a support to continue the up move towards 500-510 levels. Thus recommending buying the stock with the stop loss of 458 for the upside target of 500 levels.

BPCL: Rs. 884

EXECUTION PRICE RANGE
Buy Between Rs. 866 To Rs. 875

STOP LOSS
853.00

TARGET
910.00



BPCL has been making higher lows from last three weeks and holding the support which is shifting to higher levels even after the volatility in broader market. It crossed the immediate hurdle of 890 levels and closed near the 50 DMA. Overall the trend of the stock is positive and after the recent consolidation it is set to start fresh rally towards higher levels. Thus recommending buying the stock with the stop loss of 853 for the upside target of 910 levels.



Tuesday, September 29, 2015

INDIAN INDICES					
INDICES	CLOSE	CHANGE	% CHG		
SENSEX	25617	-246.66	-0.95		
NIFTY	7796	-72.80	-0.93		
TURNOVER & MARKET CAP					
Rs. (Cr.)	YEST.DAY	PREV.DAY	% CHG		
BSE Cash	2567	2475	3.72		
NSE Cash	14167	19664	-27.95		
Derivatives(bn)	5582	4835	15.46		
INSTITUTIONAL ACTIVITIES					
DII Equity	51	891	-94.32		
FII Equity	-115	-1330	-91.35		
FII F&O	3011	-137	-2291.29		
ADVANCES & DECLINES					
EXCHANGE	ADV	DECLINES	TOTAL		
BSE	1150	1270	2420		
NSE	562	924	1486		
INDIAN ADR's					
ADR	CLOSE	PREV.CLOSE	% CHG		
Infosys	17.68	17.81	0.74		
HDFC Bank	59.22	60.56	2.26		
Wipro	11.74	11.80	0.51		
ICICI Bank	8.43	8.47	0.47		
Sterlite Inds.	14.54	14.72	1.24		
Dr. Reddy's Lab	60.23	59.79	-0.73		
SECTORAL INDICES					
BSE			NSE		
INDICES	CLOSE	%	INDICES	CLOSE	%
CNX Bank	17100	-0.56	BSE MIDcap	10573	-0.23
CNX IT	11841	-0.95	BSE SmallCap	10916	-0.24
CNX Realty	172	1.21	BSE 200	3291	-0.82
CNX FMCG	19422	-0.32	OTHER IMP.DATA		
CNX Infra	2753	-0.85	10 Yr Gsec yield	7.71	
CNX Pharma	12844	0.14	RS/\$	66.14	
BSE Auto	17015	-1.74	\$ Index	96.22	
BSE Metal	6708	-2.60	Brent Crude (\$)	47.93	
CNX MNC	9415	-0.59	Gold (\$)	1134.10	
BSE 500	10315	-0.73	Silver (\$)	14.69	
Nifty Midcap	3154	-0.59	PE	CURRENT	AVG
BSE 100	7926	-0.85	NIFTY	20.2	19.7

TOP OUTPERFORMERS					
SENSEX			NIFTY		
SYMBOL	CLOSE	%	SYMBOL	CLOSE	%
DLF	129.3	2.30	DR REDDYS	4191.3	5.57
HUL	792.6	1.43	IDEA	142.8	2.55
Tata power	65.5	0.85	LUPIN	2034.2	2.20
TCS	2590.4	0.57	YES BANK	729.9	1.25
SBI	239.6	0.17	HINDUSTAN UNII	790.7	1.14
TOP UNDERPERFORMERS					
SENSEX			NIFTY		
SYMBOL	CLOSE	%	SYMBOL	CLOSE	%
Tata Motors	285.3	-6.06	TATA MOTORS	285.0	-6.06
SESA Goa	91.2	-4.60	ULTRATECHCEM	2717.8	-3.32
JP Asso.	11.1	-4.30	INFY	1105.6	-3.07
Sun Pharma	860.8	-3.42	COAL INDIA	308.9	-3.00
Infosys	1108.2	-2.91	Zee Entertainment	383.7	-2.76
BSE 500					
TOP OUTPERFORMERS			TOP UNDERPERFORMERS		
SYMBOL	CLOSE	%	SYMBOL	CLOSE	%
Lanco Infratech Ltd	3.8	17.19	Tata Motors Ltd	206.6	-6.35
Rajesh Exports Ltd	549.5	12.27	Tata Motors Ltd	285.3	-6.06
Bairampur Chini Mills Ltd	53.5	11.47	Standard Chartere	64.7	-5.41
IDBI Bank Ltd	79.1	6.97	Kesoram Industrie	83.1	-4.98
Rashtriya Chemicals & Fertilizers Ltd	47.1	6.09	Gold Line Internati	172.9	-4.95
PTC India Ltd	59.9	5.64	Motherson Sumi S	239.0	-4.88
Dr Reddy's Laboratories Ltd	4191.9	5.54	Castex Technolog	24.4	-4.87
Claris Lifesciences Ltd	202.4	5.25	Bharti Infratel Ltd	376.8	-4.79
Natco Pharma Ltd	2401.4	5.06	Tree House Educa	328.1	-4.79
Metalyt Forgings Ltd	57.9	4.99	Aegis Logistics Ltd	87.2	-4.70
Lycos Internet Ltd	26.4	4.97	PMC Fincorp Ltd	1.0	-4.67
Sobha Ltd	262.9	4.87	Future Lifestyle Fa	69.5	-4.60
PS IT Infrastructure & Services Ltd	9.4	4.68	Vedanta Ltd	91.2	-4.40
Shree Renuka Sugars Ltd	7.7	4.60	Jaiprakash Associ	11.1	-4.30
Kitex Garments Ltd	844.7	4.43	Force Motors Ltd	2265.2	-4.23
Petronet LNG Ltd	179.2	4.03	SML ISUZU Ltd	1157.2	-3.96
India Cements Ltd/The	76.9	3.92	Hindustan Zinc Ltd	137.7	-3.67
CCL Products India Ltd	233.2	3.88	Motilal Oswal Fina	296.1	-3.66
Aarti Industries	512.2	3.87	Cera Sanitaryware	1892.2	-3.64
Bajaj Hindusthan Sugar Ltd	13.6	3.82	TV18 Broadcast Lt	33.5	-3.60
Housing Development & Infrastructur	66.1	3.69	Jet Airways India	320.2	-3.58
Wockhardt Ltd	1413.3	3.41	Century Textiles &	504.3	-3.51
Atul Ltd	1493.2	3.24	GIC Housing Fina	182.3	-3.49
Godfrey Phillips India Ltd	661.5	3.16	Sun Pharmaceutic	860.8	-3.42
SE Investments Ltd	257.4	3.15	Greaves Cotton Lt	128.7	-3.41



Tuesday, September 29, 2015

TRENDER+ OF NIFTY 50 STOCKS

SCRIP NAME	OPEN	HIGH	LOW	CLOSE	PIVOT	R 1	R 2	S 1	S 2	TRENDER+	DAILY PROJECTED RANGE
ACC	1344	1357	1326	1337	1340	1354	1371	1323	1309	Down	1347 - 1316
AMBUJIA CEMENT	207	207	202	203	204	206	210	201	199	UP	205 - 200
ASIAN PAINTS	810	813	790	794	799	808	822	785	776	Down	804 - 781
AXIS BANK	515	522	505	507	511	518	529	500	494	Down	514 - 497
BAJAJ AUTO	2300	2310	2262	2274	2282	2302	2330	2255	2235	UP	2292 - 2245
BHARTI AIRTEL	332	337	323	328	329	335	343	322	316	Down	332 - 319
BHEL	200	200	194	195	196	199	202	193	191	Down	198 - 192
BPCL	881	899	876	884	886	896	909	873	863	UP	903 - 880
CAIRN INDIA	149	151	146	148	148	150	153	145	143	Down	149 - 144
CIPLA	648	654	639	642	645	651	660	636	630	UP	648 - 633
COAL INDIA	322	322	308	309	313	318	327	304	299	Down	315 - 301
LUPIN	2000	2068	1983	2034	2028	2074	2113	1989	1944	UP	2093 - 2009
Dr.REDDY'S LABS	3992	4227	3921	4191	4113	4305	4419	3999	3807	UP	4362 - 4056
GAIL INDIA	295	298	291	292	294	297	301	289	286	Down	295 - 288
GRASIM INDS	3435	3475	3425	3452	3451	3476	3501	3426	3401	UP	3488 - 3439
HCL TECH	956	964	945	951	953	962	973	942	934	UP	957 - 938
HDFC	1180	1190	1163	1172	1175	1187	1201	1161	1149	Down	1181 - 1155
HDFC BANK	1055	1061	1043	1046	1050	1057	1068	1039	1032	UP	1054 - 1036
HERO MOTOCORP	2383	2400	2336	2350	2362	2388	2426	2324	2298	Down	2375 - 2311
HINDALCO	72	73	70	71	71	72	74	70	68	Down	72 - 69
HINDUSTAN UNILEVER	785	803	781	791	791	802	813	780	770	Flat	807 - 786
ICICI BANK	272	273	266	268	269	272	276	265	263	Down	271 - 264
IDEA	140	145	140	143	143	145	148	140	137	Flat	142 - 141
IDFC	141	143	140	141	141	142	144	139	138	UP	142 - 139
INDUSIND BANK	927	938	916	921	925	934	946	912	903	UP	929 - 908
INFOSYS	1140	1143	1101	1106	1117	1132	1159	1090	1074	Down	1124 - 1082
ITC	323	325	318	319	321	323	328	317	314	UP	322 - 315
ULTRATECH CEMENT	2790	2790	2711	2718	2740	2768	2819	2689	2661	Down	2754 - 2675
TECH MAHINDRA	573	582	570	573	575	580	587	568	563	UP	584 - 572
KOTAK MAHINDRA BANK	653	660	639	641	647	654	668	633	625	Down	651 - 629
LARSEN & TOUBRO	1464	1469	1425	1430	1441	1458	1485	1414	1397	Down	1450 - 1406
MAHINDRA & MAHINDRA	1225	1240	1213	1222	1225	1237	1252	1210	1198	UP	1231 - 1204
MARUTI SUZUKI	4570	4615	4517	4536	4556	4595	4654	4497	4458	UP	4576 - 4477
NMDC	95	96	93	93	94	95	97	93	92	Down	95 - 92
NTPC	122	123	120	121	121	123	124	120	119	Down	122 - 119
ONGC	228	229	224	225	226	228	231	223	221	Down	227 - 222
POWERGRID	126	129	125	127	127	129	131	125	123	Down	130 - 126
PUNJAB NATIONAL BANK	137	138	134	135	136	137	139	133	132	Down	136 - 133
RELIANCE INDS	840	841	829	834	835	841	847	828	822	Down	838 - 825
ZEE ENTERTAINMENT ENTERP	398	398	383	384	388	393	403	378	373	Down	391 - 376
SAIL	53	53	51	52	52	53	54	51	50	UP	52 - 51
SBI	241	244	239	239	241	243	246	237	235	Down	242 - 236
VEDANTA Ltd	96	96	91	91	93	95	98	89	87	Down	94 - 88
YES BANK	720	742	720	730	730	741	752	719	709	Down	746 - 725
SUNPHARMA	895	895	857	861	871	885	909	847	833	Down	878 - 840
TATA MOTORS	304	305	284	285	291	299	313	277	270	Down	295 - 274
TATA POWER	65	67	64	66	65	67	69	64	62	UP	68 - 65
TATA STEEL	218	218	209	209	212	216	222	206	202	Down	214 - 204
TCS	2594	2619	2580	2594	2597	2615	2637	2576	2558	UP	2606 - 2567
WIPRO	602	602	590	593	595	600	607	588	583	Down	597 - 586



Tuesday, September 29, 2015

HOW TO TRADE USING THE TRENDER+

CLOSING PRICES

Closing price is the price at which scrip closes on the date mentioned in the report. Traders may initiate their intraday trade on this level. The stock or index should sustain above or below the pivot else you should exit the trade.

TREND

Trend is the level at which the tendency of stocks can be identified. For best results, you can use the 'trender' to trade. A 'weak' trend denoted by "DOWN" means that traders can trade with a negative bias. If the trend is 'strong', denoted by "UP", one can trade with a positive bias on the long side. Base price should be the pivot point price.

IF THE TREND IS UP

Ideally, for a buy position, buy at the pivot point and use S1 as the stop loss for a target of levels around R2 and higher.

IF THE TREND IS DOWN

Ideally, for a sell position, sell at the pivot point and use R1 as a stop loss and S2 or lower levels as a target level.

TRENDER + : This is a broad based technical trend of the stock prevalent, may or may not be necessarily for the day.

DAILY PROJECTED RANGE : Projected Daily high and low are indicative range for the day, if the price moves out of the range the trend in that side may accelerate and turn bullish or bearish.

THE TREND AND THE DAILY PROJECTED RANGE IS BASED ON CERTAIN SIMPLE CALCULATIONS WHICH IS PROVIDED BY BLOOMBERG, EXCLUSIVELY USED BY ANAND RATHI

Disclaimer-This report has been issued by Anand Rathi Share and Stock Brokers Limited (ARSSBL), which is regulated by SEBI. The information herein was obtained from various sources; we do not guarantee its accuracy or completeness. Neither the information nor any opinion expressed constitutes an offer, or an invitation to make an offer, to buy or sell any securities or any options, futures or other derivatives related to such securities ("related investments"). ARSSBL and its affiliates may trade for their own accounts as market maker / jobber and/or arbitrageur in any securities of this issuer(s) or in related investments, and may be on the opposite side of public orders. ARSSBL, its affiliates, directors, officers, and employees may have a long or short position in any securities of this issuer(s) or in related investments. ARSSBL or its affiliates may from time to time perform investment banking or other services for, or solicit investment banking or other business from, any entity mentioned in this report. This research report is prepared for private circulation. It does not have regard to the specific investment objectives, financial situation and the particular needs of any specific person who may receive this report. Investors should seek financial advice regarding the appropriateness of investing in any securities or investment strategies discussed or recommended in this report and should understand that statements regarding future prospects may not be realized. Investors should note that income from such securities, if any, may fluctuate and that each security's price or value may rise or fall. Past performance is not necessarily a guide to future performance. Foreign currency rates of exchange may adversely affect the value, price or income of any security or related investment mentioned in this report.

ANAND RATHI SHARE AND STOCK BROKERS LIMITED

4 th Floor , Silver Metropolis , Jaicoach Compound Opposite Bimbisar Nagar, Goregaon(East), Mumbai - 400063.

Tel No: +91 22 4001 3700 | Fax No: +91 22 4001 3770 | Website: www.rathi.com