

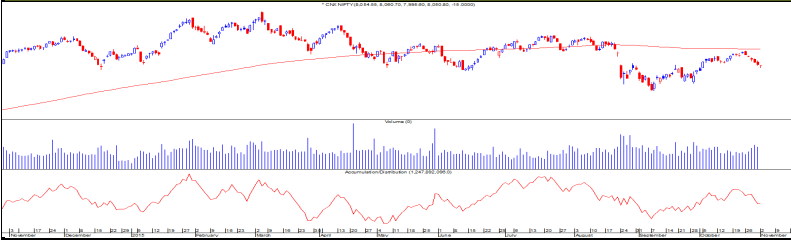


### TECHNICALS

#### MARKET OUTLOOK

**NIFTY (8051)** CNX Nifty opened flat to negative and continued witnessing selling pressure for sixth consecutive session. It breached its 8000 levels and witnessed a push towards its 20 days low of 7995 levels. However it managed to recover around 55 points from the day's low of 7995 levels in the last hour of trade. It ended the day lower for sixth consecutive day in a row but made a dragonfly doji in candlestick pattern which has long lower shadow indicates trend reversal, if follow up buying supports it current level. It has been making lower highs lower lows from last five trading sessions. Now it needs to negate the negative pattern of making lower highs – lower lows by holding above 8050-8060 levels to get back a bounce back move towards 8120 and 8150 zones, while if it fails to sustain the 8025 levels then selling pressure might drag the index towards 7980-7950 levels.

#### CNX NIFTY



#### COMMENTS

**SENSEX (26559)** BSE Sensex opened negatively and continued trading in bears grip for sixth consecutive session. It observed selling pressure but it witnessed a minor pull back in the final hour of trade of about 180 points from day's low of 26378 levels. It finally ended the session with a loss of around 97 points. Now its needs to sustain above 26650 levels to witness a pause in the immediate negative trend and bounce back towards 26850 levels while if it fails to hold 26500 levels then index might get in the grip of the bears and continue to witness selling pressure towards 26250 and lower levels.

#### S&P BSE~SENSEX



#### PIVOT TABLE

|              | NIFTY       | SENSEX       | BANK NIFTY   | CNX IT       |
|--------------|-------------|--------------|--------------|--------------|
| <b>HIGH</b>  | 8061        | 26824        | 17372        | 11561        |
| <b>LOW</b>   | 7996        | 26378        | 17209        | 11428        |
| <b>CLOSE</b> | 8051        | 26559        | 17341        | 11546        |
| <b>PIVOT</b> | <b>8036</b> | <b>26587</b> | <b>17307</b> | <b>11512</b> |
| <b>R 1</b>   | 8076        | 26796        | 17406        | 11595        |
| <b>R 2</b>   | 8101        | 27033        | 17471        | 11644        |
| <b>S 1</b>   | 8011        | 26350        | 17242        | 11463        |
| <b>S 2</b>   | 7971        | 26141        | 17144        | 11379        |



Tuesday, November 3, 2015

### TECHNICAL CALLS

#### MARUTI : Rs. 4496

**EXECUTION PRICE RANGE**  
Buy Between Rs. 4410 To Rs. 4454

**STOP LOSS**  
4345.00

**TARGET**  
4610.00



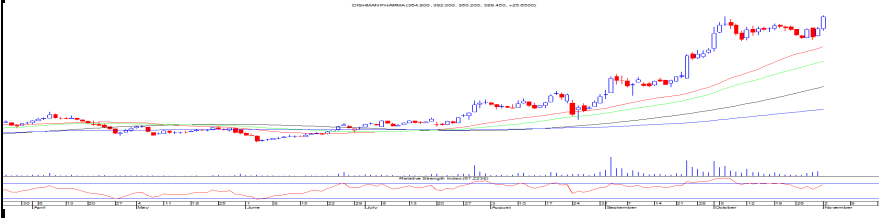
**MARUTI** is holding its positive stance and consolidating in a range even after a profit booking decline in the broader market which indicates that the major trend of the stock is intact to positive. It is continuously taking support at its rising support trend line and has been respecting to its 50 DMA. It has been making higher lows from last three weeks. Thus recommending the traders to buy the stock with the stop loss 4345 for the upside immediate target of 4610 levels.

#### DISHMAN PHARMA : Rs. 389

**EXECUTION PRICE RANGE**  
Buy Between Rs.382 To Rs.385

**STOP LOSS**  
375.00

**TARGET**  
420.00



**DISHMAN PHARMA** has given a breakout from the consolidation of last four weeks and registered seven years high levels with rise in trading volume activities. It may continue its momentum towards new territory as overall the counter is showing strength. Thus recommending to buy the stock with the stop loss 375 for the upside immediate target of 420 levels.



Tuesday, November 3, 2015

| INDIAN INDICES           |          |            |                  |         |       |
|--------------------------|----------|------------|------------------|---------|-------|
| INDICES                  | CLOSE    | CHANGE     | % CHG            |         |       |
| SENSEX                   | 26559    | -97.68     | -0.37            |         |       |
| NIFTY                    | 8051     | -15.00     | -0.19            |         |       |
| TURNOVER & MARKET CAP    |          |            |                  |         |       |
| Rs. (Cr.)                | YEST.DAY | PREV.DAY   | % CHG            |         |       |
| BSE Cash                 | 3187     | 2773       | 14.92            |         |       |
| NSE Cash                 | 15314    | 19049      | -19.61           |         |       |
| Derivatives(bn)          | 1703     | 5162       | -67.01           |         |       |
| INSTITUTIONAL ACTIVITIES |          |            |                  |         |       |
| DII Equity               | 1560     | -299       | -621.43          |         |       |
| FII Equity               | -1465    | 174        | -941.31          |         |       |
| FII F&O                  | 2631     | 1046       | 151.68           |         |       |
| ADVANCES & DECLINES      |          |            |                  |         |       |
| EXCHANGE                 | ADV      | DECLINES   | TOTAL            |         |       |
| BSE                      | 1125     | 1652       | 2777             |         |       |
| NSE                      | 592      | 907        | 1499             |         |       |
| INDIAN ADR's             |          |            |                  |         |       |
| ADR                      | CLOSE    | PREV.CLOSE | % CHG            |         |       |
| Infosys                  | 18.29    | 18.16      | -0.71            |         |       |
| HDFC Bank                | 62.24    | 61.14      | -1.77            |         |       |
| Wipro                    | 12.37    | 12.38      | 0.08             |         |       |
| ICICI Bank               | 8.66     | 8.62       | -0.46            |         |       |
| Sterlite Inds.           | 15.77    | 15.39      | -2.41            |         |       |
| Dr. Reddy's Lab          | 64.91    | 64.79      | -0.18            |         |       |
| SECTORAL INDICES         |          |            |                  |         |       |
| BSE                      |          |            | NSE              |         |       |
| INDICES                  | CLOSE    | %          | INDICES          | CLOSE   | %     |
| CNX Bank                 | 17341    | -0.08      | BSE MIDcap       | 10983   | 0.08  |
| CNX IT                   | 11546    | 0.52       | BSE SmallCap     | 11292   | -0.21 |
| CNX Realty               | 178      | 0.85       | BSE 200          | 3398    | -0.17 |
| CNX FMCG                 | 20215    | 0.48       | OTHER IMP.DATA   |         |       |
| CNX Infra                | 2821     | -0.43      | 10 Yr Gsec yield | 7.63    |       |
| CNX Pharma               | 13030    | -1.07      | RS/\$            | 65.60   |       |
| BSE Auto                 | 18175    | 0.05       | \$ Index         | 96.89   |       |
| BSE Metal                | 7215     | -1.27      | Brent Crude (\$) | 48.83   |       |
| CNX MNC                  | 9619     | 0.28       | Gold (\$)        | 1137.05 |       |
| BSE 500                  | 10655    | -0.16      | Silver (\$)      | 15.40   |       |
| Nifty Midcap             | 3301     | 0.28       | PE               | CURRENT | AVG   |
| BSE 100                  | 8182     | -0.15      | NIFTY            | 20.6    | 19.7  |

| TOP OUTPERFORMERS                   |        |       |                     |        |        |
|-------------------------------------|--------|-------|---------------------|--------|--------|
| SENSEX                              |        |       | NIFTY               |        |        |
| SYMBOL                              | CLOSE  | %     | SYMBOL              | CLOSE  | %      |
| M&M                                 | 1209.2 | 2.25  | TECH MAHINDR        | 556.1  | 3.13   |
| DLF                                 | 118.7  | 1.76  | M&M                 | 1208.9 | 2.13   |
| Coal India                          | 325.0  | 1.59  | YES BANK            | 772.0  | 1.76   |
| Reliance Inds.                      | 959.2  | 1.19  | COAL INDIA          | 325.0  | 1.59   |
| Maruti                              | 4495.4 | 1.05  | AMBUJA              | 210.0  | 1.47   |
| TOP UNDERPERFORMERS                 |        |       |                     |        |        |
| SENSEX                              |        |       | NIFTY               |        |        |
| SYMBOL                              | CLOSE  | %     | SYMBOL              | CLOSE  | %      |
| Bajaj Auto                          | 2432.2 | -4.61 | BAJAJ AUTO          | 2432.7 | -4.62  |
| JP Asso.                            | 13.0   | -4.00 | VEDANTA LTD         | 97.0   | -3.00  |
| Hindalco                            | 81.0   | -3.69 | HDFC                | 1221.1 | -2.85  |
| Tata Steel                          | 238.7  | -3.28 | SUNPHARMA           | 865.4  | -2.72  |
| SESA Goa                            | 97.0   | -3.00 | L&T                 | 1388.7 | -1.57  |
| BSE 500                             |        |       |                     |        |        |
| TOP OUTPERFORMERS                   |        |       | TOP UNDERPERFORMERS |        |        |
| SYMBOL                              | CLOSE  | %     | SYMBOL              | CLOSE  | %      |
| Greaves Cotton Ltd                  | 143.4  | 14.26 | Central Bank of Ir  | 69.3   | -17.15 |
| Onental Bank of Commerce            | 145.8  | 8.08  | Opto Circuits Indi  | 13.1   | -12.44 |
| Jaiprakash Power Ventures Ltd       | 7.5    | 7.77  | Indian Overseas     | 31.1   | -11.29 |
| India Cements Ltd/The               | 83.6   | 6.77  | IFB Industries Ltd  | 486.7  | -8.60  |
| Oberoi Realty Ltd                   | 302.7  | 6.27  | Lanco Infratech L   | 4.3    | -7.10  |
| Reliance Communications Ltd         | 79.9   | 6.18  | ABG Shipyard Ltd    | 118.8  | -5.94  |
| Indian Bank                         | 132.7  | 6.08  | Kaveri Seed Co L    | 479.3  | -5.30  |
| Intellect Design Arena Ltd          | 264.1  | 6.02  | Mahindra Holiday    | 369.7  | -5.06  |
| Piramal Enterprises Ltd             | 990.5  | 5.56  | Castex Technolog    | 22.5   | -4.86  |
| Geometric Ltd                       | 143.0  | 5.11  | PMC Fincorp Ltd     | 1.2    | -4.69  |
| PS IT Infrastructure & Services Ltd | 10.9   | 4.89  | Bajaj Auto Ltd      | 2432.2 | -4.61  |
| Mphasis Ltd                         | 499.3  | 4.53  | Emami Ltd           | 1023.3 | -4.41  |
| Jubilant Life Sciences Ltd          | 427.2  | 4.48  | VRL Logistics Ltd   | 389.5  | -4.38  |
| TAKE Solutions Ltd                  | 183.3  | 4.41  | SJVN Ltd            | 27.3   | -4.38  |
| Balrampur Chini Mills Ltd           | 63.4   | 4.28  | Mindtree Ltd        | 1500.7 | -4.31  |
| Finolex Industries Ltd              | 325.9  | 4.27  | Monsanto India L    | 2273.1 | -4.12  |
| Cera Sanitaryware Ltd               | 1986.9 | 4.27  | Adani Enterprises   | 88.5   | -4.12  |
| PVR Ltd                             | 861.3  | 4.24  | Jaiprakash Assoc    | 13.0   | -4.00  |
| NIIT Technologies Ltd               | 590.3  | 4.12  | NMDC Ltd            | 96.1   | -3.85  |
| Shipping Corp of India Ltd          | 82.1   | 3.99  | Elgi Equipments L   | 133.9  | -3.84  |
| Wockhardt Ltd                       | 1548.6 | 3.59  | Hindalco Industrie  | 81.0   | -3.69  |
| Sobha Ltd                           | 335.5  | 3.49  | Housing Develop     | 70.0   | -3.65  |
| Century Plyboards India Ltd         | 180.6  | 3.41  | Ashok Leyland Lt    | 90.3   | -3.63  |
| TVS Motor Co Ltd                    | 274.2  | 3.30  | Vakrangee Ltd       | 126.1  | -3.48  |
| United Spirits Ltd                  | 3250.2 | 3.11  | KSK Energy Vent     | 36.6   | -3.43  |



### TRENDER+ OF NIFTY 50 STOCKS

| SCRIP NAME              | OPEN | HIGH | LOW  | CLOSE | PIVOT | R 1  | R 2  | S 1  | S 2  | TRENDER+ | DAILY PROJECTED RANGE |
|-------------------------|------|------|------|-------|-------|------|------|------|------|----------|-----------------------|
| ACC                     | 1373 | 1405 | 1363 | 1398  | 1389  | 1415 | 1431 | 1373 | 1347 | UP       | 1423 - 1381           |
| AMBUJA CEMENT           | 208  | 211  | 205  | 210   | 209   | 212  | 214  | 207  | 203  | UP       | 213 - 208             |
| ASIAN PAINTS            | 831  | 837  | 826  | 830   | 831   | 836  | 842  | 825  | 819  | Flat     | 834 - 822             |
| AXIS BANK               | 478  | 480  | 473  | 478   | 477   | 481  | 484  | 474  | 470  | Down     | 482 - 476             |
| BAJAJ AUTO              | 2542 | 2575 | 2392 | 2433  | 2467  | 2541 | 2650 | 2358 | 2284 | UP       | 2504 - 2321           |
| BHARTI AIRTEL           | 348  | 352  | 344  | 350   | 348   | 353  | 357  | 345  | 340  | Down     | 355 - 347             |
| BHEL                    | 198  | 203  | 197  | 200   | 200   | 203  | 206  | 197  | 194  | Down     | 204 - 199             |
| BPCL                    | 873  | 879  | 862  | 872   | 871   | 880  | 889  | 862  | 853  | UP       | 876 - 858             |
| CAIRN INDIA             | 154  | 154  | 151  | 153   | 153   | 155  | 156  | 151  | 149  | Down     | 154 - 150             |
| CIPLA                   | 689  | 691  | 674  | 680   | 682   | 689  | 698  | 673  | 666  | UP       | 685 - 669             |
| COAL INDIA              | 320  | 326  | 317  | 325   | 323   | 328  | 332  | 319  | 313  | Down     | 330 - 321             |
| LUPIN                   | 1929 | 1935 | 1868 | 1900  | 1901  | 1934 | 1968 | 1867 | 1834 | UP       | 1917 - 1850           |
| Dr.REDDY'S LABS         | 4253 | 4315 | 4233 | 4296  | 4281  | 4330 | 4364 | 4248 | 4199 | UP       | 4347 - 4265           |
| GAIL INDIA              | 310  | 313  | 300  | 311   | 308   | 316  | 321  | 303  | 295  | Down     | 318 - 305             |
| GRASIM INDS             | 3712 | 3737 | 3651 | 3691  | 3693  | 3735 | 3779 | 3649 | 3607 | Down     | 3714 - 3628           |
| HCL TECH                | 875  | 881  | 870  | 876   | 876   | 882  | 887  | 871  | 865  | UP       | 884 - 873             |
| HDFC                    | 1252 | 1267 | 1213 | 1221  | 1234  | 1254 | 1288 | 1200 | 1180 | Down     | 1244 - 1190           |
| HDFC BANK               | 1095 | 1097 | 1077 | 1083  | 1086  | 1095 | 1106 | 1074 | 1065 | Down     | 1090 - 1070           |
| HERO MOTOCORP           | 2575 | 2584 | 2533 | 2546  | 2554  | 2576 | 2606 | 2524 | 2503 | Down     | 2565 - 2513           |
| HINDALCO                | 84   | 85   | 80   | 81    | 82    | 84   | 86   | 79   | 77   | Down     | 83 - 78               |
| HINDUSTAN UNILEVER      | 799  | 805  | 792  | 803   | 800   | 808  | 813  | 795  | 786  | Down     | 811 - 797             |
| ICICI BANK              | 277  | 281  | 276  | 280   | 279   | 282  | 284  | 276  | 273  | Flat     | 283 - 278             |
| IDEA                    | 141  | 142  | 139  | 141   | 140   | 142  | 143  | 139  | 138  | Down     | 141 - 138             |
| IDFC                    | 55   | 59   | 55   | 58    | 57    | 60   | 61   | 56   | 53   | Down     | 61 - 56               |
| INDUSIND BANK           | 912  | 917  | 904  | 914   | 912   | 919  | 924  | 906  | 899  | Down     | 922 - 909             |
| INFOSYS                 | 1130 | 1136 | 1114 | 1131  | 1127  | 1140 | 1149 | 1118 | 1105 | Down     | 1144 - 1123           |
| ITC                     | 333  | 340  | 330  | 337   | 336   | 341  | 346  | 331  | 326  | Down     | 343 - 333             |
| ULTRATECH CEMENT        | 2906 | 2934 | 2860 | 2928  | 2907  | 2954 | 2981 | 2881 | 2834 | UP       | 2967 - 2894           |
| TECH MAHINDRA           | 541  | 558  | 532  | 556   | 549   | 565  | 574  | 540  | 524  | UP       | 569 - 544             |
| KOTAK MAHINDRA BANK     | 688  | 690  | 680  | 687   | 686   | 691  | 696  | 681  | 676  | UP       | 688 - 678             |
| LARSEN & TOUBRO         | 1400 | 1404 | 1374 | 1389  | 1389  | 1404 | 1419 | 1374 | 1359 | Down     | 1396 - 1367           |
| MAHINDRA & MAHINDRA     | 1200 | 1237 | 1200 | 1209  | 1215  | 1230 | 1252 | 1194 | 1179 | Down     | 1241 - 1204           |
| MARUTI SUZUKI           | 4470 | 4525 | 4425 | 4496  | 4482  | 4539 | 4582 | 4439 | 4382 | UP       | 4560 - 4460           |
| ADSEZ                   | 293  | 303  | 290  | 296   | 296   | 302  | 309  | 290  | 284  | Down     | 305 - 293             |
| NTPC                    | 132  | 133  | 130  | 133   | 132   | 134  | 136  | 131  | 128  | UP       | 135 - 131             |
| ONGC                    | 247  | 249  | 242  | 247   | 246   | 250  | 253  | 243  | 239  | Down     | 251 - 245             |
| POWERGRID               | 129  | 130  | 127  | 129   | 129   | 130  | 131  | 127  | 126  | Down     | 131 - 128             |
| PUNJAB NATIONAL BANK    | 129  | 130  | 127  | 129   | 129   | 131  | 132  | 128  | 126  | Down     | 131 - 128             |
| RELIANCE INDS           | 949  | 962  | 945  | 960   | 956   | 966  | 972  | 950  | 939  | UP       | 969 - 953             |
| ZEE ENTERTAINMENT ENTER | 413  | 416  | 405  | 413   | 411   | 418  | 422  | 407  | 400  | Down     | 414 - 403             |
| SAIL                    | 53   | 54   | 51   | 52    | 52    | 53   | 54   | 51   | 50   | Down     | 53 - 50               |
| SBI                     | 238  | 239  | 233  | 237   | 236   | 240  | 242  | 234  | 230  | Down     | 238 - 232             |
| VEDANTA Ltd             | 100  | 101  | 96   | 97    | 98    | 100  | 103  | 95   | 93   | Down     | 99 - 94               |
| YES BANK                | 755  | 774  | 752  | 772   | 766   | 780  | 787  | 758  | 745  | UP       | 783 - 762             |
| SUNPHARMA               | 875  | 878  | 858  | 865   | 867   | 876  | 888  | 856  | 846  | Down     | 872 - 851             |
| TATA MOTORS             | 386  | 392  | 384  | 388   | 388   | 392  | 396  | 384  | 380  | UP       | 394 - 386             |
| TATA POWER              | 69   | 69   | 68   | 69    | 69    | 69   | 70   | 68   | 67   | Down     | 70 - 68               |
| TATA STEEL              | 247  | 247  | 236  | 239   | 241   | 245  | 252  | 234  | 230  | Down     | 243 - 232             |
| TCS                     | 2500 | 2523 | 2488 | 2517  | 2509  | 2531 | 2544 | 2496 | 2474 | Flat     | 2538 - 2502           |
| WIPRO                   | 574  | 577  | 569  | 575   | 574   | 579  | 583  | 570  | 565  | Flat     | 581 - 572             |



## HOW TO TRADE USING THE TRENDER+

## CLOSING PRICES

Closing price is the price at which scrip closes on the date mentioned in the report. Traders may initiate their intraday trade on this level. The stock or index should sustain above or below the pivot else you should exit the trade.

## TREND

Trend is the level at which the tendency of stocks can be identified. For best results, you can use the 'trender' to trade. A 'weak' trend denoted by "DOWN" means that traders can trade with a negative bias. If the trend is 'strong', denoted by "UP", one can trade with a positive bias on the long side. Base price should be the pivot point price.

## IF THE TREND IS UP

Ideally, for a buy position, buy at the pivot point and use S1 as the stop loss for a target of levels around R2 and higher.

## IF THE TREND IS DOWN

Ideally, for a sell position, sell at the pivot point and use R1 as a stop loss and S2 or lower levels as a target level.

TRENDER + : This is a broad based technical trend of the stock prevalent, may or may not be necessarily for the day.

DAILY PROJECTED RANGE : Projected Daily high and low are indicative range for the day, if the price moves out of the range the trend in that side may accelerate and turn bullish or bearish.

THE TREND AND THE DAILY PROJECTED RANGE IS BASED ON CERTAIN SIMPLE CALCULATIONS WHICH IS PROVIDED BY BLOOMBERG, EXCLUSIVELY USED BY ANAND RATHI

**Disclaimer-** This report has been issued by Anand Rathi Share and Stock Brokers Limited (ARSSBL), which is regulated by SEBI. The information herein was obtained from various sources; we do not guarantee its accuracy or completeness. Neither the information nor any opinion expressed constitutes an offer, or an invitation to make an offer, to buy or sell any securities or any options, futures or other derivatives related to such securities ("related investments"). ARSSBL and its affiliates may trade for their own accounts as market maker / jobber and/or arbitrageur in any securities of this issuer(s) or in related investments, and may be on the opposite side of public orders. ARSSBL, its affiliates, directors, officers, and employees may have a long or short position in any securities of this issuer(s) or in related investments. ARSSBL or its affiliates may from time to time perform investment banking or other services for, or solicit investment banking or other business from, any entity mentioned in this report. This research report is prepared for private circulation. It does not have regard to the specific investment objectives, financial situation and the particular needs of any specific person who may receive this report. Investors should seek financial advice regarding the appropriateness of investing in any securities or investment strategies discussed or recommended in this report and should understand that statements regarding future prospects may not be realized. Investors should note that income from such securities, if any, may fluctuate and that each security's price or value may rise or fall. Past performance is not necessarily a guide to future performance. Foreign currency rates of exchange may adversely affect the value, price or income of any security or related investment mentioned in this report.

ANAND RATHI SHARE AND STOCK BROKERS LIMITED  
4th Floor, Silver Metropolis, Jaicoach Compound Opposite Bimbisar Nagar, Goregaon(East), Mumbai - 400063.

Tel No: +91 22 4001 3700 | Fax No: +91 22 4001 3770 | Website: www.rathi.com