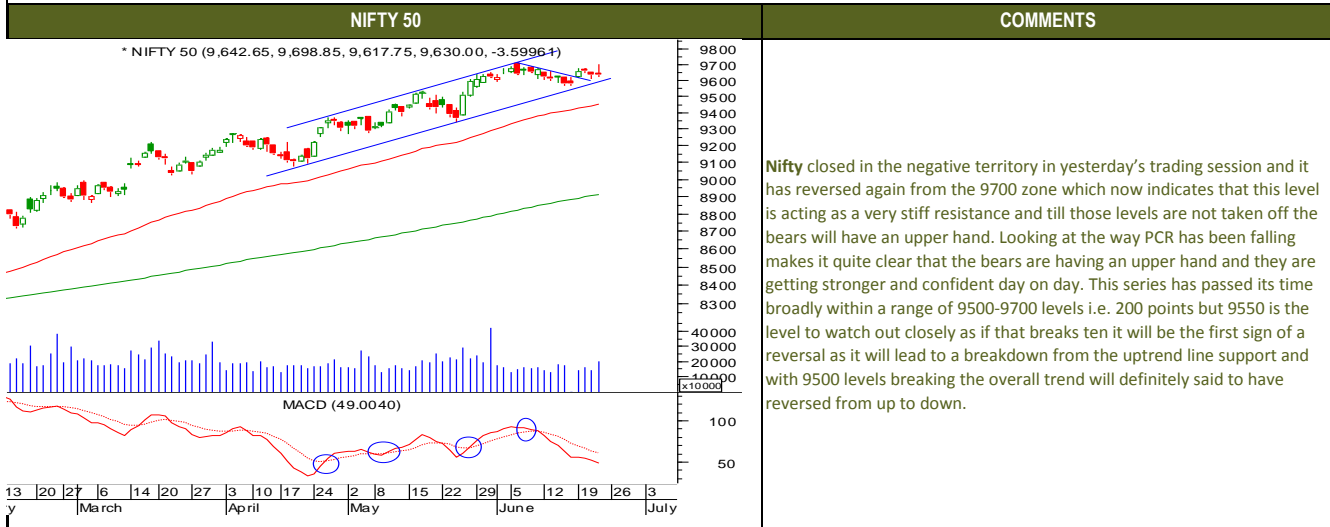




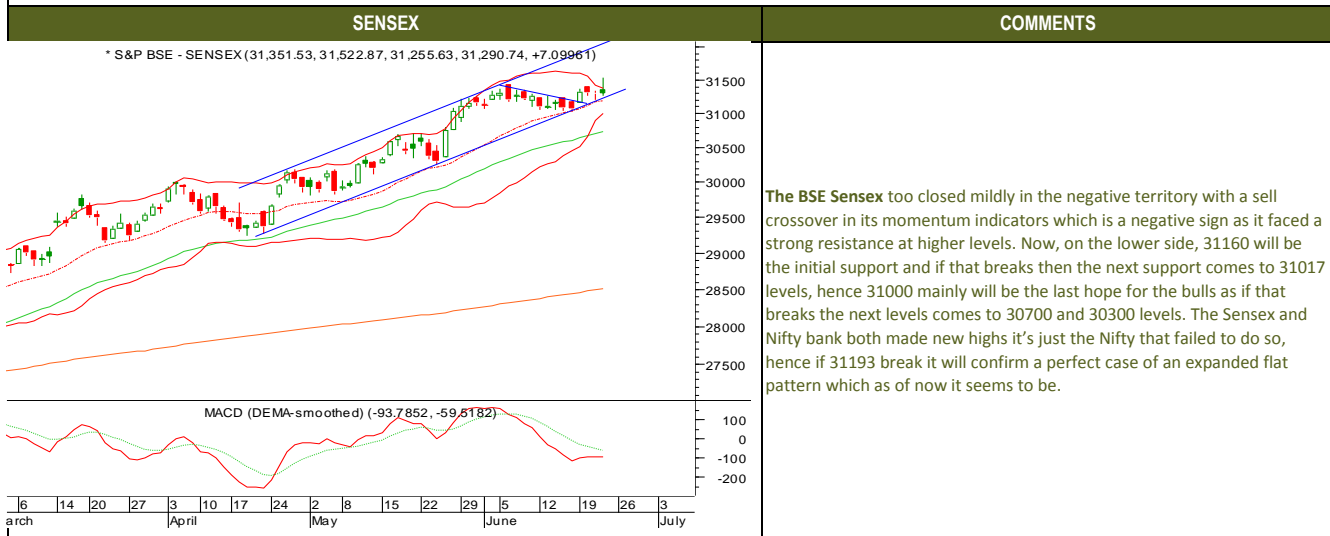
Friday, June 23, 2017

TECHNICALS



Friday, June 23, 2017

TECHNICALS





Friday, June 23, 2017

TECHNICALS

BANK NIFTY	COMMENTS
<p>* NIFTY BANK (23,716.85, 23,897.85, 23,694.15, 23,736.10, +27.3496)</p> <p>MACD (DEMA-smoothed) (-60.0566, -46.7961)</p>	<p>The Nifty bank closed in mildly negative territory even after making record highs again the momentum indicators are still in sell mode which is absolutely not a good sign in the short term for the bulls. Today it's a weekly close before a long weekend and the F&O expiry week and the momentum indicators on the weekly charts too are reversing from buy to sell which now indicates that the time might have come for the reversal. The Nifty bank has formed an ending diagonal pattern on the daily charts and it has completed the wave C of the same which indicates that the markets are likely to reverse from these levels now. On the upside, 24000 is the ultimate resistance for this series, whereas, 23400 is the ultimate support, hence if 23400 breaks then trend will be said to have reversed from up to down. Below 23400, the target for the Banknifty will be 23150 and below those 22500 levels, hence 23150 will be the last hope for the bulls. On the Flip side, if 24000 levels gets taken off then the next level will be 24250 levels, so it's time now be very cautious.</p>



Friday, June 23, 2017

INDIAN INDICES

INDICES	CLOSE	CHANGE	% CHG
SENSEX	31291	7.10	0.02
NIFTY	9630	-3.60	-0.04

TURNOVER & MARKET CAP

Rs. (Cr.)	YEST'DAY	PREV.DAY	% CHG
BSE Cash	7510	2989	151.26
NSE Cash	26262	21625	21.44
Derivatives(bn)	5032	3347	50.37

INSTITUTIONAL ACTIVITIES

DII Equity	-41	477	-108.67
FII Equity	-153	-313	-51.15
FII F&O	-89	163	-154.62

ADVANCES & DECLINES

EXCHANGE	ADV	DECLINES	TOTAL
BSE	1107	1366	2473
NSE	619	1050	1669

INDIAN ADR's

ADR	CLOSE	PREV.CLOSE	% CHG
Infosys	14.90	14.98	0.54
HDFC Bank	89.03	88.15	-0.99
Wipro	4.95	4.99	101.62
ICICI Bank	8.97	8.91	-0.67
Sterlite Inds.	23.20	22.95	-1.08
Dr. Reddy's Lab	41.44	41.89	1.09

SECTORAL INDICES

INDICES	BSE		NSE	
	CLOSE	%	INDICES	CLOSE
CNX Bank	23736	0.12	BSE MIDcap	14763
CNX IT	10200	-0.23	BSE SmallCap	15609
CNX Realty	268	-1.58	BSE 200	4189
CNX FMCG	26188	-0.26	OTHER IMP.DATA	
CNX Infra	3220	-0.55	10 Yr Gsec yield	6.45
CNX Pharma	9472	0.16	RSI	64.55
BSE Auto	23984	-0.16	\$ Index	97.54
BSE Metal	11056	-1.35	Brent Crude (\$)	45.22
CNX MNC	12085	-0.63	Gold (\$)	1250.87
BSE 500	13316	-0.20	Silver (\$)	16.59
Nifty Midcap	4579	-0.63	PE	CURRENT
BSE 100	9958	-0.12	NIFTY	23.3
				19.7

TOP OUTPERFORMERS

SENSEX			NIFTY	
SYMBOL	CLOSE	%	SYMBOL	CLOSE
JP Asso.	16.5	7.17	GRASIM	1172.3
Sun Pharma	538.7	2.03	SUNPHARMA	538.7
HDFC	1654.7	1.68	AMBUJA	245.0
SBI	294.6	1.50	AUROBINDO PHARMA	666.0
Reliance Inds.	1433.2	1.06	HDFC	1653.8

TOP UNDERPERFORMERS

SENSEX			NIFTY	
SYMBOL	CLOSE	%	SYMBOL	CLOSE
ONGC	160.5	-2.82	ONGC	160.5
HUL	1094.3	-2.62	HINDALCO	191.6
Hindalco	191.6	-2.52	GAIL	360.1
Jindal Steel	121.8	-2.29	BPCL	641.8
SESA Goa	234.3	-1.82	DR REDDYS	2635.6

BSE 500

TOP OUTPERFORMERS			TOP UNDERPERFORMERS	
SYMBOL	CLOSE	%	SYMBOL	CLOSE
Amtek Auto Ltd	31.0	9.95	Indiabulls Real Estate Ltd	#####
Jaiprakash Associates Ltd	16.5	7.17	Magma Fincorp Ltd	#####
Cox & Kings Ltd	284.3	6.34	Videcon Industries Ltd	#####
Reliance Defence and Engineering	60.0	5.54	Corp Bank	#####
Entertainment Network India Ltd	955.0	5.10	OnMobile Global Ltd	#####
Unitech Ltd	5.2	4.17	Just Dial Ltd	#####
Rain Industries Ltd	102.2	4.02	Indian Oil Corp Ltd	#####
Force Motors Ltd	4376.6	4.01	Persistent Systems Ltd	#####
Caplin Point Laboratories Ltd	575.5	3.97	Wockhardt Ltd	#####
Avanti Feeds Ltd	1350.3	3.66	Future Retail Ltd	#####
Godfrey Phillips India Ltd	1278.7	3.59	Hindustan Petroleum Corp Ltd	#####
Manappuram Finance Ltd	97.1	3.52	Monsanto India Ltd	#####
Grasim Industries Ltd	1172.0	3.48	Gulf Oil Lubricants India Ltd	#####
Kitex Garments Ltd	286.3	3.34	Future Consumer Ltd	#####
Aditya Birla Nuvo Ltd	1738.3	3.22	Ashoka Buildcon Ltd	#####
Gujarat Pipavav Port Ltd	149.4	3.04	Rolta India Ltd	#####
LA Opala RG Ltd	520.0	2.60	PNB Housing Finance Ltd	#####
Shriram City Union Finance Ltd	2454.1	2.55	Techno Electric & Engineering Co Ltd	#####
Hatsun Agro Products Ltd	593.5	2.46	Gujarat State Petronet Ltd	#####
BEML Ltd	1544.4	2.40	Exide Industries Ltd	#####
Page Industries Ltd	16676.8	2.28	Oil & Natural Gas Corp Ltd	#####
Prism Cement Ltd	119.8	2.26	Cholamandalam Investment and Finance Co	#####
Redington India Ltd	134.1	2.25	Eros International Media Ltd	#####
Steel Authority of India Ltd	58.5	2.19	Kwality Ltd	#####
Punj Lloyd Ltd	19.4	2.11	GHCL Ltd	#####



Friday, June 23, 2017

TRENDER+ OF NIFTY 50 STOCKS

SCRIP NAME	CLOSE	R 1	R 2	S 1	S 2	TRENDER+	PIVOT TABLE				
ACC Ltd	1651	1668	1685	1640	1629	UP					
Adani Ports & Special Economic	369	373	377	367	364	Down					
Ambuja Cements Ltd	245	248	250	242	238	UP					
Asian Paints Ltd	1163	1170	1178	1156	1149	UP	HIGH	9699	31523	23898	10355
Aurobindo Pharma Ltd	666	673	679	659	651	UP	LOW	9618	31256	23694	10167
Axis Bank Ltd	508	513	518	505	502	UP	CLOSE	9630	31291	23736	10200
Bajaj Auto Ltd	2846	2862	2878	2818	2791	UP	PIVOT	9649	31356	23776	10240
Bank of Baroda	165	168	170	164	162	Down	R 1	9680	31457	23858	10314
Bharat Petroleum Corp Ltd	642	652	662	634	627	Down	R 2	9730	31624	23980	10428
Bharti Airtel Ltd	366	369	372	363	359	Down	S 1	9599	31190	23654	10126
Bharti Infratel Ltd	375	377	380	372	369	Down	S 2	9568	31089	23572	10053
Bosch Ltd	24300	24525	24751	24137	23975	Down					
Cipla Ltd/India	540	544	548	538	535	Down					
Coal India Ltd	246	250	254	243	241	Down					
Dr Reddy's Laboratories Ltd	2636	2684	2733	2603	2570	Down					
Eicher Motors Ltd	27681	27946	28211	27463	27246	Down					
GAIL India Ltd	360	367	373	354	349	UP					
Grasim Industries Ltd	1172	1199	1225	1137	1102	UP					
HCL Technologies Ltd	849	857	864	839	829	Flat					
HDFC Bank Ltd	1698	1712	1727	1687	1677	UP					
Hero MotoCorp Ltd	3731	3773	3816	3703	3675	Down					
Hindalco Industries Ltd	192	196	200	189	187	UP					
Hindustan Unilever Ltd	1094	1110	1127	1085	1076	Down					
Housing Development Finance	1654	1667	1681	1633	1613	UP					
ICICI Bank Ltd	290	293	296	287	285	Down					
Indiabulls Housing Finance Ltd	1114	1129	1144	1104	1093	Down					
Indian Oil Corp Ltd	394	405	416	387	381	Down					
IndusInd Bank Ltd	1491	1502	1514	1483	1476	Down					
Infosys Ltd	940	961	982	927	914	Flat					
ITC Ltd	311	314	317	308	305	UP					
Kotak Mahindra Bank Ltd	998	1005	1012	991	983	UP					
Larsen & Toubro Ltd	1736	1757	1778	1724	1711	Down					
Lupin Ltd	1067	1083	1098	1058	1048	Down					
Mahindra & Mahindra Ltd	1396	1408	1421	1383	1370	UP					
Maruti Suzuki India Ltd	7316	7349	7383	7285	7255	UP					
NTPC Ltd	159	160	162	158	157	Down					
Oil & Natural Gas Corp Ltd	160	164	167	159	157	Down					
Power Grid Corp of India Ltd	202	207	212	199	195	Down					
Reliance Industries Ltd	1433	1443	1453	1425	1418	UP					
State Bank of India	295	297	299	292	289	UP					
Sun Pharmaceutical Industries	639	543	547	532	525	UP					
Tata Consultancy Services Ltd	2395	2422	2450	2376	2358	Down					
Tata Motors Ltd	282	287	292	279	277	Down					
Tata Motors Ltd	453	460	467	449	444	Down					
Tata Power Co Ltd/The	83	84	85	81	80	UP					
Tata Steel Ltd	515	521	527	511	506	UP					
Tech Mahindra Ltd	387	392	398	384	380	Down					
UltraTech Cement Ltd	4058	4100	4141	4004	3950	Down					
Wipro Ltd	255	258	261	253	250	Flat					
Yes Bank Ltd	1452	1469	1486	1436	1420	Flat					
Zee Entertainment Enterprises	511	513	515	508	505	UP					



Friday, June 23, 2017

HOW TO TRADE USING THE TRENDER+

CLOSING PRICES

Closing price is the price at which scrip closes on the date mentioned in the report. Traders may initiate their intraday trade on this level. The stock or index should sustain above or below the pivot else you should exit the trade.

TREND

Trend is the level at which the tendency of stocks can be identified. For best results, you can use the 'trender' to trade. A 'weak' trend denoted by "DOWN" means that traders can trade with a negative bias. If the trend is 'strong', denoted by "UP", one can trade with a positive bias on the long side. Base price should be the pivot point price.

IF THE TREND IS UP

Ideally, for a buy position, buy at the pivot point and use S1 as the stop loss for a target of levels around R2 and higher.

IF THE TREND IS DOWN

Ideally, for a sell position, sell at the pivot point and use R1 as a stop loss and S2 or lower levels as a target level.

TRENDER + : This is a broad based technical trend of the stock prevalent, may or may not be necessarily for the day.

DAILY PROJECTED RANGE : Projected Daily high and low are indicative range for the day, if the price moves out of the range the trend in that side may accelerate and turn bullish or bearish.

THE TREND AND THE DAILY PROJECTED RANGE IS BASED ON CERTAIN SIMPLE CALCULATIONS WHICH IS PROVIDED BY BLOOMBERG, EXCLUSIVELY USED BY ANAND RATHI

Disclaimer-This report has been issued by Anand Rathi Share and Stock Brokers Limited (ARSSBL), which is regulated by SEBI. The information herein was obtained from various sources; we do not guarantee its accuracy or completeness. Neither the information nor any opinion expressed constitutes an offer, or an invitation to make an offer, to buy or sell any securities or any options, futures or other derivatives related to such securities ("related investments"). ARSSBL and its affiliates may trade for their own accounts as market maker / jobber and/or arbitrageur in any securities of this issuer(s) or in related investments, and may be on the opposite side of public orders. ARSSBL, its affiliates, directors, officers and employees may have a long or short position in any securities of this issuer(s) or in related investments. ARSSBL or its affiliates may from time to time perform investment banking or other services for, or solicit investment banking or other business from, any entity mentioned in this report. This research report is prepared for private circulation. It does not have regard to the specific investment objectives, financial situation and the particular needs of any specific person who may receive this report. Investors should seek financial advice regarding the appropriateness of investing in any securities or investment strategies discussed or recommended in this report and should understand that statements regarding future prospects may not be realized. Investors should note that income from such securities, if any, may fluctuate and that each security's price or value may rise or fall. Past performance is not necessarily a guide to future performance. Foreign currency rates of exchange may adversely affect the value, price or income of any security or related investment mentioned in this report.

ANAND RATHI SHARE AND STOCK BROKERS LIMITED

4 th Floor , Silver Metropolis, Jaicoach Compound Opposite Bimbisar Nagar, Goregaon(East), Mumbai - 400063.

Tel No: +91 22 4001 3700 | Fax No: +91 22 4001 3770 | Website: www.rathi.com