

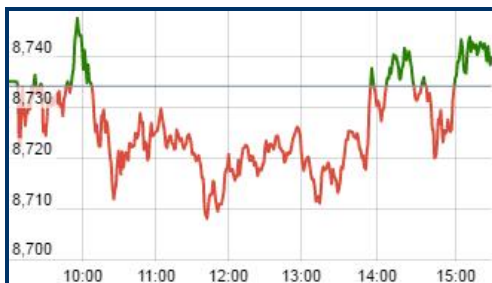


**WALLFORT**  
Financial Services Ltd.

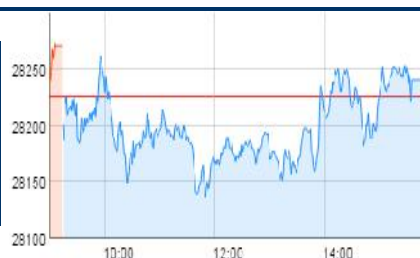


6th February, 2017

# Wake-Up Call



Nifty	
Open	8735.15
High	8748.25
Low	8707.75
Close	8740.95
% Chg	0.08



Sensex	
Open	28270.67
High	28280.58
Low	28127.18
Close	28240.52
% Chg	+0.05%

STOCK INDICES	Closing	1D%
SENSEX	28240.52	+0.05%
NIFTY	8740.95	0.08
BSE MIDCAP	13285.41	+0.61%
CNX MIDCAP	16035.20	1.29

Nifty Top Gainer			
<a href="#">BANKBARODA</a>	186.1	177.7	4.73
<a href="#">TECHM</a>	481	461.1	4.32
<a href="#">CIPLA</a>	608.7	584.4	4.17
<a href="#">BHEL</a>	142.6	139	2.55
<a href="#">INFRADEL</a>	298.9	292.5	2.19

Nifty Top Loser	Closing	Previous	Change
<a href="#">BOSCHLTD</a>	22,350.00	22,947.15	-2.6
<a href="#">ZEEL</a>	495	507.4	-2.44
<a href="#">EICHERMOT</a>	23,320.00	23,779.15	-1.93
<a href="#">TATAMTRDVR</a>	333.3	339.8	-1.91
<a href="#">TATAMOTORS</a>	522.35	531.5	-1.72

## Securities Ban in Trade

**CENTURYTEX**  
**IBREALEST**  
**JINDALSTEL**  
**JPASSOCIAT**  
**ORIENTBANK**

## Domestic-

## Corporate-

- **Godrej Properties:** The real estate company expects to monetise commercial properties worth about Rs 1,500 crore at Mumbai, Kolkata and Chandigarh over the next six months and reduce net debt, which now stands at Rs 3,278 crore.
- **Jindal Steel (JSPL):** Naveen Jindal-led JSPL has said it is exploring various options, including divestment, to reduce its debt of around Rs 46,000 crore.
- **United Breweries (Holdings) Ltd:** With CBI seizing its documents and records in the ongoing investigation against Chairman Vijay Mallya, United Breweries (Holdings) has stated that it is unable to file financial results within stipulated time and has sought time up to March 15 to file its quarterly report.
- **IL&FS Transportation Networks:** The company's joint venture with IL&FS Engineering & Construction bags projects under Madhya Pradesh Road Development Corporation.
- **Lupin:** The pharma company received final approval for Triamcinolone Acentonide cream from the USFDA.
- **Grasim Industries:** The company has increased FPI stake limit to 49% from 30% of the total paid up equity share capital.
- **Accelya Kale Solutions:** The company announced their intention to combine with Mercator to create a leading global technology enabled solutions provider to airlines, travel agents and freight forwarders.

## Comments:

*The benchmark indices on Friday ended flat as investors preferred to stay on the sidelines ahead of the Reserve Bank of India's policy meeting next week*



**WALLFORT**  
Financial Services Ltd.

6th February, 2017

# Wake-Up Call

Wallfort Research is also available on Bloomberg <Code WFSR>

**Disclaimer:** This document has been prepared by the Research Division of Wallfort Financial Services Ltd. Mumbai, India (WFSL) and is meant for use by the recipient only as information and is not for circulation. This document is not to be reported or copied or made available to others without prior permission of WFSL. It should not be considered or taken as an offer to sell or a solicitation to buy or sell any security. The information contained in this report has been obtained from sources that are considered to be reliable. However, WFSL has not independently verified the accuracy or completeness of the same. Neither WFSL nor any of its affiliates, its directors or its employees accept any responsibility of whatsoever nature for the information, statements and opinion given, made available or expressed herein or for any omission therein. Recipients of this report should be aware that past performance is not necessarily a guide to future performance and value of investments can go down as well. The suitability or otherwise of any investments will depend upon the recipient's particular circumstances and, in case of doubt, advice should be sought from an independent expert/advisor. Either WFSL or its affiliates or its directors or its employees or its representatives or its clients or their relatives may have position(s), make market, act as principal or engage in transactions of securities of companies referred to in this report and they may have used the research material prior to publication. We may from time to time solicit or perform investment banking or other services for any company mentioned in this document.

Disclosure: Wallfort Financial Services Ltd. / its affiliates entities / employees may hold a position in the stock(s) recommended above.