

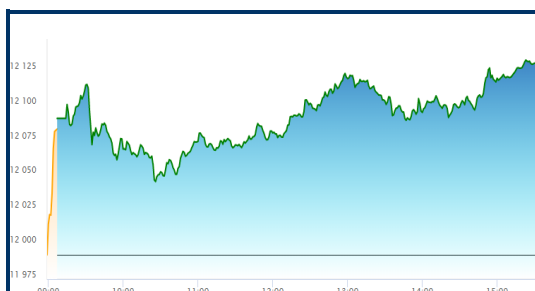


WALLFORT
Financial Services Ltd.



20th February, 2020

Wake-Up Call



Nifty 50	
Open	12,090.60
High	12,134.70
Low	12,042.10
Close	12,130.30
% Chg.	+1.15%



Sensex	
Open	41,121.51
High	41,357.16
Low	41,048.93
Close	41,323.00
% Chg.	+1.05%

STOCK INDICES	Closing	% Chg.
BSE SENSEX	41,323.00	+1.05%
BSE MIDCAP	15,631.91	+1.34%
NIFTY 50	12,130.30	+1.15%
NIFTY MIDCAP 50	4,903.65	+1.67%
NIFTY BANK	30,842.05	+0.91%

Nifty 50 Top Gainers	LTP	% Chg.	Prev. Close
INFRA TEL	224.7	7.00%	210
GRASIM	755.8	4.41%	723.9
COALINDIA	177.8	3.46%	171.85
ZEEL	252.5	2.81%	245.6
HINDUNILVR	2,296.00	2.76%	2,234.40

Nifty 50 Top Losers	LTP	% Chg.	Prev. Close
TATAMOTORS	158.1	-2.17%	161.6
JSWSTEEL	280.8	-1.40%	284.8
SUNPHARMA	403.25	-1.32%	408.65
TCS	2,194.10	-0.98%	2,215.75
BHARTIARTL	544	-0.78%	548.25

Securities Ban in Trade

NCC
YESBANK

Domestic Corporate –

Simplex Infra: The Adani Group is in talks with promoters of Simplex Infrastructures to take equity exposure in the latter through a fresh share sale. A couple of private equity investors have also expressed interest in Simplex Infra.

Power Grid: The state-run firm will not go to the telecom tribunal against the telecom department's demand notice for Rs 22,168 crore as licence fee dues, as it feels the Supreme Court's latest order and hearing seem to exempt it, a senior government official said.

Tata Power: Global investors including Brookfield, Omers, Mubadala and Abu Dhabi Investment Authority are in early stage discussions with Tata Power to invest around \$500-600 million in its renewable energy platform.

NIIT: The company said it has approved the proposal of voluntary liquidation of its wholly-owned subsidiaries NIIT Institute of Process Excellence and NIIT Yuva Jyoti.

Tata Communications: State-owned Hemisphere Properties India Ltd's board has approved issuance of shares to Tata Communications under an agreement between them in connection with transfer of surplus land during the disinvestment of erstwhile VSNL in 2002.

Man Industries: The company received new export orders of about Rs 300 crore from MENA region. With this, the total unexecuted order book for the company stood at about Rs 1,600 crore.

Vodafone Idea: On the derivatives counter, the open interest of the February futures contract rose by almost 8 per cent as the stock price jumped 40 per cent on Wednesday, indicating creation of fresh bullish bets.

Comment – An uptick in stock markets globally supported by a fall in coronavirus cases and expectations of more Chinese stimulus is likely to keep the Dalal Street's mood upbeat today.



WALLFORT
Financial Services Ltd.



20th February, 2020

Wake-Up Call

Wallfort Research is also available on Bloomberg <Code WFS:IN>

Disclaimer: This document has been prepared by the Research Division of Wallfort Financial Services Ltd. Mumbai, India (WFSL) and is meant for use by the recipient only as information and is not for circulation. This document is not to be reported or copied or made available to others without prior permission of WFSL. It should not be considered or taken as an offer to sell or a solicitation to buy or sell any security. The information contained in this report has been obtained from sources that are considered to be reliable. However, WFSL has not independently verified the accuracy or completeness of the same. Neither WFSL nor any of its affiliates, its directors or its employees accepts any responsibility of whatsoever nature for the information, statements and opinion given, made available or expressed herein or for any omission therein. Recipients of this report should be aware that past performance is not necessarily a guide to future performance and value of investments can go down as well. The suitability or otherwise of any investments will depend upon the recipient's particular circumstances and, in case of doubt, advice should be sought from an independent expert/advisor. Either WFSL or its affiliates or its directors or its employees or its representatives or its clients or their relatives may have position(s), make market, act as principal or engage in transactions of securities of companies referred to in this report and they may have used the research material prior to publication. We may from time to time solicit or perform investment banking or other services for any company mentioned in this