

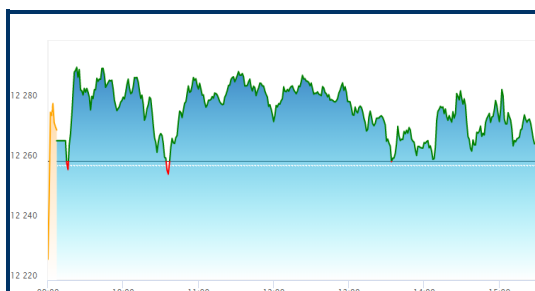


**WALLFORT**  
Financial Services Ltd.

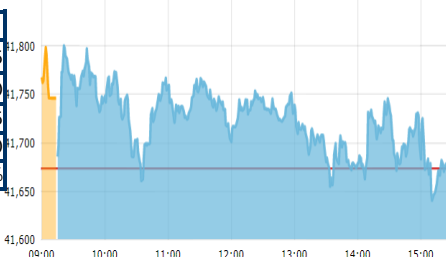


23<sup>rd</sup> December, 2019

Wake-Up Call



Nifty 50	
Open	12,266.45
High	12,293.90
Low	12,252.75
Close	12,271.80
% Chg.	+0.1%



Sensex	
Open	41,746.20
High	41,809.96
Low	41,636.11
Close	41,681.54
% Chg.	+0.02%

STOCK INDICES	Closing	% Chg.
BSE SENSEX	41,681.54	+0.02%
BSE MIDCAP	14,835.97	+0.15%
NIFTY 50	12,271.80	+0.10%
NIFTY MIDCAP 50	4,641.30	+0.11%
NIFTY BANK	32,384.95	+0.45%

Nifty 50 Top Gainers	LTP	% Chg.	Prev. Close
TITAN	1,199.70	3.51%	1,159.05
TATASTEEL	461.75	3.36%	446.75
UPL	580	3.07%	562.75
SBIN	337.25	2.77%	328.15
NESTLEIND	14,600.00	2.20%	14,285.40

Nifty 50 Top Losers	LTP	% Chg.	Prev. Close
VEDL	145.3	-2.71%	149.35
KOTAKBANK	1,694.30	-2.04%	1,729.50
TATAMOTORS	176.55	-1.45%	179.15
EICHERMOT	22,120.10	-1.37%	22,427.15
ITC	241.45	-1.19%	244.35

Securities Ban in Trade

**DISHTV**  
**YESBANK**

## Domestic Corporate –

**KEC International:** The flagship company of the RPG Group said it has bagged orders worth Rs 1,520 crore across various business verticals.

**Reliance Infra:** The company has won an arbitration award of Rs 1,250 crore against Damodar Valley Corporation. The company said it would use the proceeds to pay lenders and reduce debt.

**Bharti Infratel:** The government is unlikely to clear the proposed merger of Bharti Infratel with Indus Towers by the December 24 deadline, which may force the three major signatories – Bharti Airtel, Vodafone Group Plc and Vodafone Idea – to call off the deal and explore other options to monetise their stakes.

**GAIL:** The Department of Telecommunications has sought Rs 1.72 lakh crore in past statutory dues from state-owned gas utility GAIL India Ltd following the Supreme Court's ruling on revenues that need to be taken into consideration for payment of government dues.

**ZEEL:** Zee Entertainment clarified that all its television channels in Tamil Nadu are fully operational across leading cable and DTH operators. No changes have been made in the consumer price of the individual channels or channel packs whatsoever.

**Puravankara:** The realty firm will invest around Rs 850 crore over the next four years to develop three ultra-luxury residential projects in Bengaluru, Chennai and Mumbai.

**YES Bank, Tata Motors and Titan Company:** Tata Motors DVR, Yes Bank and Vedanta will be dropped from the BSE's benchmark Sensex from December 23. They will be replaced by UltraTech Cement, Titan and Nestle India.

**Comment –** Despite a range-bound trade, domestic markets hit fresh lifetime highs for the third consecutive day on Friday.



**WALLFORT**  
Financial Services Ltd.



23<sup>rd</sup> December, 2019

# Wake-Up Call

Wallfort Research is also available on Bloomberg <Code WFS:IN>

**Disclaimer:** This document has been prepared by the Research Division of Wallfort Financial Services Ltd. Mumbai, India (WFSL) and is meant for use by the recipient only as information and is not for circulation. This document is not to be reported or copied or made available to others without prior permission of WFSL. It should not be considered or taken as an offer to sell or a solicitation to buy or sell any security. The information contained in this report has been obtained from sources that are considered to be reliable. However, WFSL has not independently verified the accuracy or completeness of the same. Neither WFSL nor any of its affiliates, its directors or its employees accepts any responsibility of whatsoever nature for the information, statements and opinion given, made available or expressed herein or for any omission therein. Recipients of this report should be aware that past performance is not necessarily a guide to future performance and value of investments can go down as well. The suitability or otherwise of any investments will depend upon the recipient's particular circumstances and, in case of doubt, advice should be sought from an independent expert/advisor. Either WFSL or its affiliates or its directors or its employees or its representatives or its clients or their relatives may have position(s), make market, act as principal or engage in transactions of securities of companies referred to in this report and they may have used the research material prior to publication. We may from time to time solicit or perform investment banking or other services for any company mentioned in this