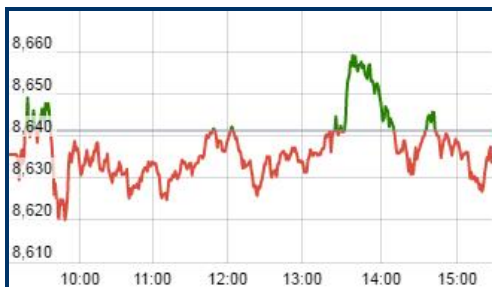




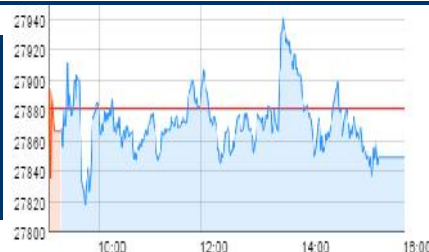
WALLFORT
Financial Services Ltd



31st January, 2017



Nifty	
Open	8635.55
High	8662.60
Low	8617.75
Close	8632.75
% Chg	-0.10



Sensex	
Open	27866.80
High	27947.37
Low	27813.32
Close	27849.56
% Chg	-0.12%

STOCK INDICES	Closing	1D%
SENSEX	27849.56	-0.12
NIFTY	8632.75	-0.10
BSE MIDCAP	13000.95	+0.28%
CNX MIDCAP	15638.65	-0.02%

Nifty Top Gainer			
IDEA	98	78	25.64
BHARTIARTL	346.4	323.75	7
GRASIM	972	931.2	4.38
RELIANCE	1,044.95	1,025.10	1.94
TECHM	472.1	467.1	1.07

Nifty Top Loser	Closing	Previous	Change
INFRADEL	327.5	353.9	-7.46
AUROPHARMA	696	713.6	-2.47
TATAMOTORS	532.75	541.95	-1.7
TATASTEEL	462.2	469.3	-1.51
TATAMTRDVR	337	341.85	-1.42

Securities Ban in Trade

IBREALEST

JINDALSTEL

Domestic-

Sugar Stocks in Focus: Sugar production updates continue to point downwards. With Maharashtra and Karnataka, two important states for production, being impacted by low rain, the output is likely to decline for the second year. This has led to a rally in sugar prices. CARE Ratings says prices were Rs 35-Rs 35.8 a kg between September 1 and December 22, 2016. These rose to Rs 37.5 a kg by January 6 and a high of Rs 39 a kg on January 13.

Metal Stocks in Focus: Metal prices are likely to climb 11 per cent in 2017, a World Bank study said on Monday. Despite a 10 per cent increase in October-December, metal prices posted a six per cent decline in 2016.

Corporate-

Idea Cellular: The third largest telco Idea Cellular, which is in talks with larger rival Vodafone for a merger, on Monday unveiled a five-point plan to grow its digital revenues, as the arrival of Reliance Jio disturbs the largest segment of voice revenue. The new strategy will focus on entertainment, digital communication, payments, cloud and information offerings.

Tata Motors: Jaguar Land Rover (JLR) has shelved its plan to manufacture a small SUV (sport utility vehicle) in India, as a feasibility study didn't favour the project and also in the backdrop of Donald Trump's protectionist stance in the US and Britain's decision to exit the European Union. The UK unit of Tata Motors will instead focus on building manufacturing facilities in the US and Europe to escape potential import curbs in those markets in the changed macroeconomic environment.

Comments:

The market on Monday settled lower as sentiment remained cautious ahead of the Union Budget 2017, while a steep surge in stocks of Bharti Airtel and Idea Cellular provided some succour to the frontline indices.



WALLFORT
Financial Services Ltd.

31st January, 2017

Wake-Up Call

Wallfort Research is also available on Bloomberg <Code WFSR>

Disclaimer: This document has been prepared by the Research Division of Wallfort Financial Services Ltd. Mumbai, India (WFSL) and is meant for use by the recipient only as information and is not for circulation. This document is not to be reported or copied or made available to others without prior permission of WFSL. It should not be considered or taken as an offer to sell or a solicitation to buy or sell any security. The information contained in this report has been obtained from sources that are considered to be reliable. However, WFSL has not independently verified the accuracy or completeness of the same. Neither WFSL nor any of its affiliates, its directors or its employees accept any responsibility of whatsoever nature for the information, statements and opinion given, made available or expressed herein or for any omission therein. Recipients of this report should be aware that past performance is not necessarily a guide to future performance and value of investments can go down as well. The suitability or otherwise of any investments will depend upon the recipient's particular circumstances and, in case of doubt, advice should be sought from an independent expert/advisor. Either WFSL or its affiliates or its directors or its employees or its representatives or its clients or their relatives may have position(s), make market, act as principal or engage in transactions of securities of companies referred to in this report and they may have used the research material prior to publication. We may from time to time solicit or perform investment banking or other services for any company mentioned in this document.

Disclosure: Wallfort Financial Services Ltd. / its affiliates entities / employees may hold a position in the stock(s) recommended above.