

Technical Report

Closing Brief

Benchmark index opened gap up on bargain hunting after registering losses in the preceding two trading sessions. Lastly, Nifty shut the shop at 9765.55 with a gain of 11.20 points or 0.11% on closing basis.

Technical Build up

- ❖ Bearish candle with increase in volume
- ❖ Sell crossover in oscillators.
- ❖ Lower band of Bollinger exist at 9700
- ❖ Crucial moving average of 20/50 SMA are at 9940 and 9795
- ❖ 200 SMA trend deciding level exist at 9040

Outlook for the day

Indian Equity market managed to end flat in a volatile trading session, taking a breather after the recent fall. European markets gained half percent ahead of the Jackson Hole meeting of central bankers later this week. On the technical front, Nifty formed an inside bar pattern which means that the index traded inside the trading range of the previous day. It closed below its 50 DEMA for last two consecutive sessions which has a negative implication. Nifty closed marginally above the support trend line connecting the lows of 9088 & 9448, if the trendline is broken then the short term trend might change to negative and selling pressure might intensify towards 9500. During the day Nifty has an immediate support near 9750 below which next support is placed at 9680 and immediate resistance is pegged at 9800-9820 followed by 9885. On the option front maximum Put OI is intact at 9800 followed by 9700 strike while maximum Call OI is at 10000 followed by 10100 strike.

Technical & Derivative Report

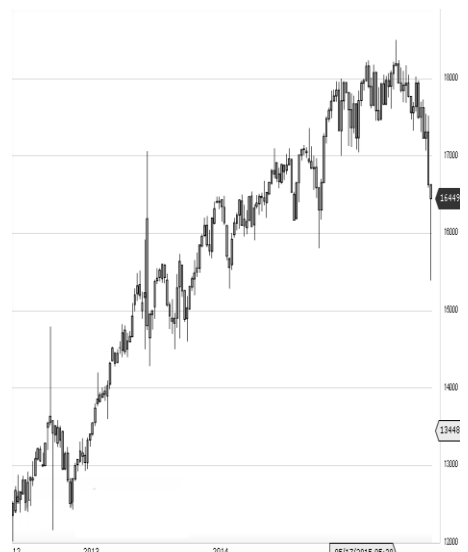
World Indices	LTP	Daily Ch(Pts)	Daily Ch(%)
Dow Jones	21899	196	0.90
Nasdaq	6297	84	1.36
S&P 500	2452	24	0.99
FTSE 100	7381	62	0.86
DAX	12229	163	1.35
Hang Seng	27401	246	0.91
Nikkei	19498	115	0.59
Sensex	31291	33	0.11
Nifty	9765	11	0.11

Commodity /Forex	LTP	Daily Ch(Pts)	Daily Ch(%)
Gold (\$/Oz)	1288.40	-2.60	-0.20
Silver (\$/Oz)	16.93	-0.05	-0.31
Copper(USD/lb.)	299.25	-1.50	-0.50
Brent Crude(USD/bbl)	51.61	-0.26	-0.50
USD/INR	64.10	-0.03	-0.05
USD/YEN	109.69	0.12	0.11
USD/EUR	1.1754	-0.0008	-0.07

Support/Resistance levels for Indian Equity Indices					
	S1	S2	CMP	R1	R2
Sensex	31240	31010	31291	31410	31690
Nifty	9750	9680	9765	9800	9885
Nifty (Fut)	9770	9700	9784	9820	9905

Pivot Level	
Sensex	31339
Nifty	9782

US: US market closed higher on Tuesday on renewed hopes of U.S. tax reform. Technically DJIA is presently trading at the 5th leg through Elliot wave count with negative divergence in oscillators.



Increase in OI with Increase in Price (Long Buildup)

Symbol	Prev OI	Curr OI	OI Chg (%)	Curr Pr.	Pr.Chg (%)
TECHM	8688900	9678900	11.4	438.9	1.9
BATAIN	2549800	2839100	11.4	683	2
DIA	1879350	1996350	6.2	457.4	1.6
DHFL	0	0	6.2	457.4	1.6
APOLLO	1491000	1577500	5.8	1098.2	4.3
HOSP	1491000	1577500	5.8	1098.2	4.3
TVSMO	5720000	6046000	5.7	575.25	0.4
TOR	5720000	6046000	5.7	575.25	0.4

Increase in OI with Decrease in Price (Short Buildup)

Symbol	Prev OI	Curr OI	OI Chg (%)	Curr Pr.	Pr.Chg (%)
SIEMENS	475500	524000	10.2	1263.55	[1.4]
MOTHE	8201250	9000000	9.7	309.65	[3.5]
RSUMI	1069250	1069250	9.7	309.65	[3.5]
ICIL	9856000	0	8.5	100.2	[8.2]
RELCAPITAL	1039050	1127100	8.5	743.25	[4.4]
TAL	0	0	8.5	743.25	[4.4]
DLF	4050500	4372000	7.9	173.45	[4.1]
DLF	0	0	7.9	173.45	[4.1]

Nifty gained by 0.11% with Nifty future shaded 3.9 lakh shares in open interest and stock future added 25.3 Lakh shares in open interest.

- Nifty PCR increased to 1.09 from 1.07
- Total Nifty Calls added 8.1 lakh shares in open interest.
- Total Nifty Puts shaded 25.2 lakh shares in open interest.
- Maximum open interest (Nifty) in Calls for July series is at 10000 and 9800 put.
- FII's sold net Rs.828.69 Cr(provisional), while DIIs bought net Rs.435.05 Cr in cash market.
- FII sold net Rs.285.97 Cr in F&O
- Securities in Ban Period: DLF, FORTIS, GMRINFRA, HDIL, IBREALEST, JPASSOCIAT, JSWENERGY & JUSTDIAL

Nifty Tracker

PARTICULARS	22/08/2017	21/08/2017	18/08/2017	17/08/2017
Spot	9765.55	9754.35	9837.4	9904.15
% Change in Spot	0.11%	-0.84%	-0.67%	0.07%
Nifty(FUT) Aug	9784.65	9768.6	9854.4	9909.45
Nifty(FUT) Aug Vol.	139197	123699	133438	112740
Nifty(FUT) Aug - OI	25101075	25573275	25042725	24989400
Nifty(FUT) Sep	9816.9	9801.75	9881.7	9939
Nifty(FUT) Sep Vol.	12730	6921	8119	7594
Nifty(FUT) Sep - OI	1932825	1849425	1773825	1672725

Trade Statistics for 22/08/2017

PARTICULARS	NO. OF CONTRACTS	TURNOVER (RS. CR.)	PUT CALL RATIO
NSE Index Futures	2,47,047	20272	-
NSE Stock Futures	7,02,704	49306	-
NSE Index Options	60,14,407	5,18,255.00	-
NSE Stock Options	5,57,141	40322	0.51
NSE F&O Total Turnover	75,21,299	628,156	0.91
NSE Cash Turnover	-	23,680.90	-
BSE Cash Turnover	-	3063.18	-
Total Turnover	-	654900	-

FII Corner (F&O)

FII NET BUYING/SELLING & CHANGE IN OPEN INTEREST (Cr. Rupee)						
PARTICULARS	22/08/2017		21/08/2017		18/08/2017	
	Net Buying /Selling	Change In Open interest	Net Buying /Selling	Change In Open interest	Net Buying /Selling	Change In Open interest
Index Future	209	223	486	12	-385	1147
Index option	-561	4256	194	508	-1442	1207
Stock Future	168	328	348	-377	-664	341
Stock option	-103	45	-464	521	-112	785
Total	-287	4852	564	665	-2603	3481

Market Open Interest

ADDITION/REDUCTION IN MARKET OPEN INTEREST					
Contracts	22/08/2017	21/08/2017	18/08/2017	17/08/2017	16/08/2017
Index Futures	-371	778	265	1280	1319
Index Options	-331	-711	630	1884	3061
Stock Futures	8285	8492	-27044	18737	8478
Stock Options	190	1455	2034	769	444
F&O Total	7774	10014	-24114.97	22669.82	13301.91

Nifty Option Open Interest Statistics

NIFTY OPTIONS HIGHEST ADDITION IN OPEN INTEREST						
Expiry	Strike	Option Type	Settlement Price	Volume	Open Interest	Change In OI
31-Aug-17	9400	PE	7.15	76639	2697975	1110300
28-Sep-17	9700	PE	115.1	17155	1313175	490275
31-Aug-17	9950	CE	16	41508	1192050	470475
28-Sep-17	8600	CE	1209	5130	393150	377850
31-Aug-17	9600	PE	26.35	184877	3949275	376800
31-Aug-17	9850	CE	42.75	42647	863550	269775
28-Sep-17	9400	PE	48.75	9188	999900	216450
28-Dec-17	10000	PE	341.75	3891	3532950	212925
28-Dec-17	10000	CE	278.45	3305	2028900	204675
28-Sep-17	9800	CE	166.25	12522	635025	197250

NIFTY OPTIONS HIGHEST REDUCTION IN OPEN INTEREST						
Expiry	Strike	Option Type	Settlement Price	Volume	Open Interest	Change In OI
31-Aug-17	8600	CE	1177.25	5061	160800	-313500
31-Aug-17	9800	CE	66.15	327646	4037925	-213075
31-Aug-17	9800	PE	83.15	280049	5116650	-210450
31-Aug-17	9000	PE	1.85	17863	2653500	-163950
31-Aug-17	8700	CE	1078.2	2228	232950	-163425
31-Aug-17	10200	CE	2.15	41528	4578525	-155775
31-Aug-17	11000	CE	0.7	7823	1311450	-154950
31-Aug-17	10300	CE	1.7	17371	2663100	-141150
31-Aug-17	10500	CE	1.2	11372	2580975	-130500
31-Aug-17	10500	PE	707.9	2302	831075	-130200

Stock Option Open Interest Statistics

STOCK OPTIONS WITH HIGHEST ADDITION IN OPEN INTEREST							
Symbol	Expiry	Strike	Option Type	Settl. Price	Volume	Open Interest	Change in OI
GMRINFRA	31-Aug-17	17.5	CE	0.3	840	19440000	3150000
SUZLON	28-Sep-17	17.5	CE	0.7	108	3330000	1290000
RCOM	31-Aug-17	25	CE	0.3	811	12586000	1148000
RECLTD	31-Aug-17	160	CE	1.8	735	1326000	1014000
RPOWER	31-Aug-17	40	CE	0.4	154	2172000	1008000
ASHOKLEY	31-Aug-17	105	CE	0.75	1249	3766000	980000
DLF	31-Aug-17	240	CE	0.1	199	1230000	915000
SBIN	31-Aug-17	280	CE	2	5407	4806000	882000
SUZLON	31-Aug-17	17.5	CE	0.2	307	35940000	840000
DLF	31-Aug-17	170	PE	3.3	1684	3375000	820000

STOCK OPTIONS WITH HIGHEST REDUCTION IN OPEN INTEREST							
Symbol	Expiry	Strike	Option Type	Settl. Price	Volume	Open Int.	Change in OI
SBIN	31-Aug-17	310	CE	0.2	2514	5769000	-2853000
ASHOKLEY	31-Aug-17	115	CE	0.15	650	5544000	-1463000
JISLJALEQS	31-Aug-17	130	CE	0.05	145	2700000	-1242000
SBIN	31-Aug-17	290	CE	0.65	6926	5682000	-1089000
RCOM	31-Aug-17	22.5	PE	0.6	462	3318000	-994000
SUZLON	31-Aug-17	20	CE	0.05	313	54420000	-960000
SINTEX	31-Aug-17	45	CE	0.05	138	2151750	-869250
DLF	31-Aug-17	180	PE	7.5	789	1960000	-760000
JPASSOCIAT	31-Aug-17	30	CE	0.1	12	10744000	-748000
INDIACEM	31-Aug-17	210	CE	0.25	348	819000	-728000

Research Team

Name	Designation	Email ID	Contact No.
Paras Bothra	President Equity Research	paras@ashikagroup.com	+91 22 6611 1704
Sanjeev Jain	AVP Equity Research	sanjeev.j@ashikagroup.com	+91 33 4036 0650
Krishna Kumar Agarwal	Equity Research Analyst	krishna.a@ashikagroup.com	+91 33 4036 0646
Partha Mazumder	Equity Research Analyst	partha.m@ashikagroup.com	+91 33 4036 0647
Arijit Malakar	Equity Research Analyst	amalakar@ashikagroup.com	+91 33 4036 0644
Kapil Jagasia	Equity Research Analyst	kapil.j@ashikagroup.com	+91 22 6611 1715
Tirthankar Das	Technical & Derivative Analyst	tirthankar.d@ashikagroup.com	+91 33 4036 0645

Ashika Stock Broking Limited ("ASBL") or Research Entity has started its journey in the year 1994 and is engaged in the business of broking services, depository services, distributor of financial products (Mutual fund, IPO & Bonds). This research report has been prepared and distributed by ASBL in the sole capacity of a Research Analyst (Reg No. INH00000206) of SEBI (Research Analyst) Regulations 2014. ASBL is a wholly owned subsidiary of Ashika Global Securities (P) Ltd., a RBI registered non-deposit taking NBFC Company. Ashika group (details is enumerated on our website www.ashikagroup.com) is an integrated financial service provider inter alia engaged in the business of Investment Banking, Corporate Lending, Commodity Broking, Debt Syndication & Other Advisory Services.

There were no significant and material disciplinary actions against ASBL taken by any regulatory authority during last three years.

Disclosure

ASBL or its associates, its Research Analysts (including their relatives) may have financial interest in the subject company(ies). However, the said financial interest is not limited to having an open stock market position in /acting as advisor to /having a loan transaction with the subject company(ies) apart from registration as clients.

- 1) ASBL or its Research Analysts (including their relatives) do not have any actual / beneficial ownership of 1% or more of securities of the subject company(ies) at the end of the month immediately preceding the date of publication of this report or date of the public appearance. However ASBL's associates may have actual / beneficial ownership of 1% or more of securities of the subject company(ies).
- 2) ASBL or their Research Analysts (including their relatives) do not have any other material conflict of interest at the time of publication of this research report or date of the public appearance. However ASBL's associates might have an actual / potential conflict of interest (other than ownership).
- 3) ASBL or its associates may have received compensation for investment banking, merchant banking, and brokerage services and for other products and services from the subject companies during the preceding 12 months. However, ASBL or its associates or its Research analysts (forming part of Research Desk) have not received any compensation or other benefits from the subject companies or third parties in connection with the research report. Moreover, Research Analysts have not received any compensation from the companies mentioned herein in the past twelve months.
- 4) ASBL or their Research Analysts have not managed or co-managed public offering of securities for the subject company(ies) in the past twelve months. However ASBL's associates may have managed or co-managed public offering of securities for the subject company(ies) in the past twelve months.
- 5) Research Analysts have not served as an officer, director or employee of the companies mentioned in the report.
- 6) Neither ASBL nor its Research Analysts have been engaged in market making activity for the companies mentioned in the report.

Disclaimer

The research recommendation and information herein are solely for the personal information of the authorized recipient and does not construe to be an offer documents or any investment, legal or taxation advice or solicitation of any action based upon it. This report is not for public distribution or use by any person or entity, where such distribution, publication, availability or use would be contrary to law, regulation or subject to any registration or licensing requirement. We will not treat recipients as customer by virtue of their receiving this report. The report is based upon the information obtained from public sources that we consider reliable, but we do not guarantee its accuracy or completeness. ASBL shall not be in anyways responsible for any loss or damage that may arise to any such person from any inadvertent error in the information contained in this report. The recipients of this report should rely on their own investigations.