

NIFTY FUT : IMMEDIATE RESISTANCE AT 9840



Nifty futures closed higher by 0.11% at 9766. Index failed to sustain the gap up opening and remained under pressure throughout the session. Index earlier has formed Morning Doji star a bullish reversal candlestick pattern which suggests recent trough to act as strong support and index can see a pullback. Index has reversed after taking support at lower trend line of the broadening wedge which is a bullish signal for short term trend. RSI has formed positive reversal with price which is a bullish signal and compliments the bullish view of price. Going ahead a sustenance below 9790 will continue down move towards 9720-9650 while resistance comes at 9820-9920.

Intraday Nifty Future Resistance—9840/9920/9970 Support—9740/9690/9650

BANK NIFTY FUT : IMMEDIATE RESISTANCE AT 24100



Bank Nifty futures closed 0.16% higher at 23975. Index failed to sustain the gap up opening and remained under pressure throughout the session. Going ahead a sustenance below 23950 will open the way for 23840-23500 while resistance comes at 24100-24250.

Intraday Bank Nifty Future Resistance—24100/24250/24350 Support—23840/23740/23500

Technical Trend

INTRADAY TRADER'S PICKS

Sr.No.	STOCK	CLOSE	S1	S2	S3	R1	R2	R3	RECOMMENDATION
1	APOLLOHOSP	1099	1085	1070	1055	1125	1140	1155	BUY ABOVE 1105
2	JSWENERGY	61	59	58	57	62	63	64	SELL BELOW 60.5
3	LUPIN	944.40	937	928	919	957	966	975	BUY ABOVE 947
4	ONGC	159.45	158	156	154	163	165	167	BUY ABOVE 160.5
5	ZEEL	516.45	511	505	500	525	531	536	BUY ABOVE 518

Technical Trend

DERIVATIVES

INDICES SNAPSHOT

SCRIPS	CP AS ON 21/08/2017	CP AS ON 22/08/2017	Change (%)	OI AS ON 21/08/2017	OI AS ON 22/08/2017	Change (%)
BANKNIFTY	23979.65	24042.9	0.26	2344200	2323280	-0.89
NIFTY	9768.6	9784.65	0.16	27597225	27211050	-1.40
NIFTYIT	10462	10471	0.09	36000	35200	-2.22

Derivative Highlights

- ⇒ Nifty Future closed with a premium of 19 points v/s a premium of 15 points in the previous session
- ⇒ Nifty Future Open Interest decreased by 1.40%. BankNifty Future Open Interest decreased by 0.89%.
- ⇒ Nifty PCR - OI increased from 1.07 to 1.09, Nifty PCR - Vol decreased from at 1.04 to 0.95
- ⇒ FII Sold Rs 828.69 crore while DII Bought Rs. 435.05 crore in the Cash Segment. FII Bought Rs. 209.35 crore in Index Futures and Sold Rs.560.53 crore in index options, while in Future they Bought Rs. 168.27 crore and Sold Rs 103.06 crore in stock options¹
- ⇒ Among Index Option space, Highest Open Interest concentration was seen in 9800 & 9700 Strike price among the PE options. Where as among CE Options Highest Open Interest Concentration was seen in 10000 & 10100 Strike price.
- ⇒ Highest Open Interest Build Up among the PE options was seen in 9750 & 9650 Strike price. Among CE options highest build up was seen in 9800 & 9900 Strike price.

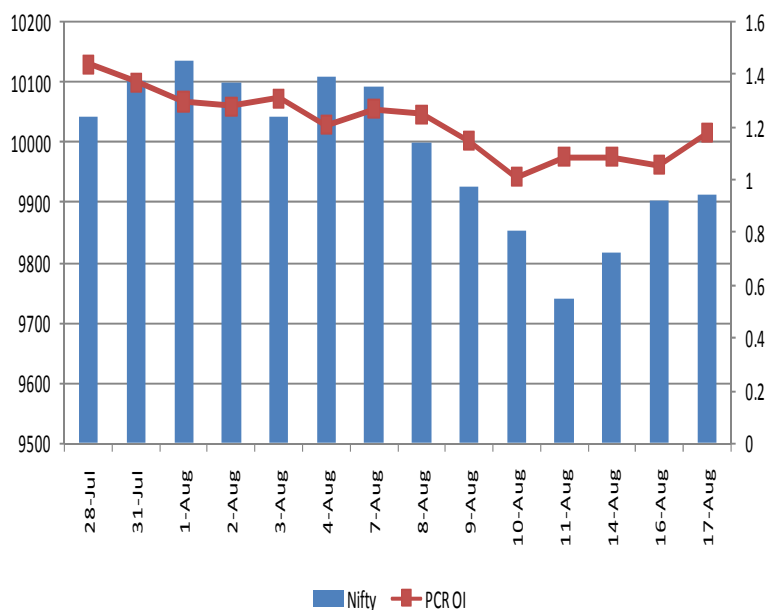
OI Concentration

PUT OPTION		CALL OPTION	
Strike Price	Open Interest	Strike Price	Open Interest
9800	5327100	10000	5896800
9700	4655250	10100	4905300
9500	4606425	10200	4734300
9600	3572475	9900	4612650
9900	2505825	9800	4251000

Highest Change in OI

PUT OPTION		CALL OPTION	
Strike Price	Change in OI	Strike Price	Change in OI
9750	237675	9800	1100625
9650	144075	9900	506175
9700	116850	10100	417600
9550	78300	9700	352125
8000	41925	9950	261450

Nifty Future Price V/S PCR-OI



Technical Trend

Stock Analysis

Long Build-up	Long Unwinding	Short Build-up	Short Covering
APOLLOHOSP	ADANI PORTS	ASIANPAINT	BIOCON
DHFL	APOLLOTYRE	BANKBARODA	DISHTV
TECHM	FORTIS	CENTURYTEX	DRREDDY
TVSMOTOR	GODFRYPHLP	DLF	HINDALCO
WIPRO	MARUTI	GMRINFRA	UBL
WOCKPHARMA	RELCAPITAL	INDIACEM	ZEEL

STATISTICS

Highest Premium

SCRIPS	Premium %	Price change %
DLF	0.77	-1.16
IBREALEST	0.68	-1.55
INFIBEAM	0.51	-0.74
BEML	0.50	-2.06
DHFL	0.47	2.17

Highest Discount

SCRIPS	Premium %	Price change %
GSFC	-1.10	-1.38
RBLBANK	-1.02	-1.05
PIDILITIND	-0.83	0.06
MARUTI	-0.75	0.08
BHEL	-0.60	1.04

TOP 5 VOLUME GAINER FOR THE SESSION

SCRIPS	CP AS ON 21/08/2017	CP AS ON 22/08/2017	Change (%)	Vol AS ON 21/08/2017	Vol AS ON 22/08/2017	Change (%)
APOLLOHOSP	1052.95	1098.4	4.32	1634	4192	157%
INFIBEAM	1403.65	1396.15	-0.53	1179	2874	144%
ICIL	109.1	100.25	-8.11	2165	4810	122%
DLF	180.85	176.65	-2.32	6322	13948	121%
WOCKPHARMA	536.8	545.55	1.63	1108	2425	119%

TOP 5 VOLUME LOSER FOR THE SESSION

SCRIPS	CP AS ON 21/08/2017	CP AS ON 22/08/2017	Change (%)	Vol AS ON 21/08/2017	Vol AS ON 22/08/2017	Change (%)
MANAPPURAM	94	91.95	-2.18	8654	3223	-63%
ONGC	157.6	159.55	1.24	5276	2769	-48%
AMARAJABAT	759.9	760.8	0.12	3927	2091	-47%
TATAGLOBAL	196.3	190.3	-3.06	11180	5977	-47%
INFY	876.7	879.15	0.28	89378	50234	-44%

Technical Trend

TOP 10 OPEN INTEREST GAINER FOR THE SESSION

SCRIPS	CP AS ON 21/08/2017	CP AS ON 22/08/2017	Change (%)	OI AS ON 21/08/2017	OI AS ON 22/08/2017	Change (%)
MOTHERSUMI	320.8	311.55	-2.88	8565000	9573750	11.78
ICIL	109.1	100.25	-8.11	10122000	11007500	8.75
DLF	180.85	176.65	-2.32	42555000	46200000	8.57
APOLLOHOSP	1052.95	1098.4	4.32	1580000	1697500	7.44
DHFL	450.15	457.95	1.73	19960500	21426000	7.34
NHPC	29.9	29.45	-1.51	20898000	22383000	7.11
UPL	812.1	799.55	-1.55	5016000	5338800	6.44
CANFINHOME	2795.15	2709.4	-3.07	588500	622750	5.82
CEATLTD	1679.75	1630.75	-2.92	1804600	1896300	5.08
SUNTV	719	700.7	-2.55	7538000	7909000	4.92

TOP 10 OPEN INTEREST LOSER FOR THE SESSION

SCRIPS	CP AS ON 21/08/2017	CP AS ON 22/08/2017	Change (%)	OI AS ON 21/08/2017	OI AS ON 22/08/2017	Change (%)
HEXAWARE	266.65	266.05	-0.23	2523000	2283000	-9.51
GODFRYPHLP	1071.65	1054.15	-1.63	666500	621500	-6.75
FORTIS	144.1	142.1	-1.39	40219200	37548900	-6.64
AJANTPHARM	1151.35	1154.05	0.23	584000	547200	-6.30
BEML	1838.95	1798.45	-2.20	2046000	1934400	-5.45
OIL	273.5	276.8	1.21	2132306	2016740	-5.42
UBL	803.65	805.65	0.25	996100	945700	-5.06
CUMMINSIND	880.7	897.7	1.93	627600	596400	-4.97
AXISBANK	494.8	499.6	0.97	34681200	33033600	-4.75
COLPAL	1080.15	1084.05	0.36	1306200	1245300	-4.66

Technical Trend

Pivot Report– Nifty 50

Symbol	PClose	Support3	Support2	Support1	Pivot	Resist1	Resist2	Resist3
ACC	1789.3	1740.4	1756.2	1772.8	1788.6	1805.2	1821.0	1837.6
ADANIPTS	375.7	357.5	363.6	369.6	375.7	381.8	387.9	393.9
AMBUJACEM	273.2	265.4	268.5	270.8	273.9	276.2	279.3	281.6
ASIANPAINT	1129.5	1106.1	1116.0	1122.7	1132.7	1139.4	1149.3	1156.0
AUOPHARMA	695.7	674.4	683.8	689.8	699.2	705.1	714.5	720.5
AXISBANK	499.2	483.5	489.7	494.5	500.7	505.5	511.7	516.5
BAJAJ-AUTO	2740.6	2673.1	2702.3	2721.4	2750.7	2769.8	2799.0	2818.1
BANKBARODA	139.4	131.6	134.9	137.1	140.4	142.7	146.0	148.2
BHARTIARTL	422.1	409.0	412.8	417.4	421.2	425.9	429.7	434.3
BOSCHLTD	21898.6	21371.7	21607.6	21753.1	21989.1	22134.6	22370.5	22516.0
BPCL	510.4	478.7	486.1	498.2	505.6	517.7	525.1	537.2
CIPLA	559.3	546.0	552.0	555.6	561.6	565.3	571.3	574.9
COALINDIA	240.6	233.9	236.2	238.4	240.7	242.9	245.2	247.4
DRREDDY	1984.2	1862.4	1898.7	1941.4	1977.7	2020.4	2056.7	2099.4
EICHERMOT	30977.2	29635.6	30270.7	30623.9	31259.0	31612.2	32247.3	32600.5
GAIL	377.8	367.2	370.2	374.0	377.0	380.8	383.8	387.6
HCLTECH	875.9	857.7	865.5	870.7	878.5	883.6	891.4	896.6
HDFC	1750.4	1720.6	1729.1	1739.8	1748.3	1758.9	1767.4	1778.1
HDFCBANK	1747.0	1720.7	1728.7	1737.9	1745.9	1755.1	1763.1	1772.3
HEROMOTOCO	3888.1	3729.8	3805.5	3846.8	3922.4	3963.7	4039.4	4080.7
HINDALCO	228.9	220.1	222.9	225.9	228.8	231.8	234.6	237.6
HINDUNILVR	1199.6	1170.0	1179.0	1189.3	1198.3	1208.6	1217.6	1227.9
IBULHSGFIN	1176.4	1118.9	1142.1	1159.2	1182.4	1199.6	1222.8	1239.9
ICICIBANK	294.0	286.4	289.3	291.6	294.5	296.8	299.7	302.0
INDUSINDBK	1626.3	1581.3	1596.1	1611.2	1626.1	1641.2	1656.0	1671.1
INFRATEL	387.9	373.3	379.5	383.7	389.8	394.0	400.2	404.4
INFY	875.4	820.9	840.4	857.9	877.5	895.0	914.5	932.0
IOC	423.2	401.5	408.3	415.8	422.6	430.0	436.8	444.3
ITC	282.9	275.9	278.1	280.5	282.8	285.2	287.4	289.8
KOTAKBANK	970.8	954.4	960.4	965.6	971.5	976.7	982.7	987.9
LT	1117.7	1086.9	1100.0	1108.8	1121.9	1130.8	1143.9	1152.7
LUPIN	944.4	920.0	927.5	936.0	943.5	951.9	959.4	967.9
M&M	1374.7	1353.7	1362.4	1368.5	1377.2	1383.3	1392.0	1398.1
MARUTI	7496.1	7365.9	7420.5	7458.3	7512.9	7550.7	7605.3	7643.1
NTPC	167.7	158.7	162.9	165.3	169.6	172.0	176.2	178.6
ONGC	159.5	154.9	156.2	157.8	159.1	160.7	162.0	163.6
POWERGRID	219.5	213.3	215.7	217.6	220.0	221.9	224.3	226.2
RELIANCE	1560.1	1526.9	1541.5	1550.8	1565.3	1574.6	1589.2	1598.5
SBIN	273.9	265.3	268.2	271.1	274.0	276.9	279.8	282.7
SUNPHARMA	470.5	453.3	457.6	464.0	468.3	474.7	479.0	485.4
TATAMOTORS	373.6	362.9	367.6	370.6	375.3	378.3	383.0	386.0
TATAMTRDVR	224.0	219.3	221.2	222.6	224.6	226.0	227.9	229.3
TATAPOWER	80.1	77.5	78.6	79.3	80.4	81.2	82.3	83.0
TATASTEEL	619.6	597.1	605.8	612.7	621.3	628.2	636.9	643.8
TCS	2497.6	2432.4	2462.2	2479.9	2509.7	2527.4	2557.2	2574.9
TECHM	439.4	422.9	427.6	433.5	438.1	444.0	448.7	454.6
ULTRACEMCO	3975.3	3869.2	3917.6	3946.4	3994.8	4023.6	4072.0	4100.8
VEDL	293.1	281.5	286.5	289.8	294.8	298.0	303.0	306.3
WIPRO	290.3	284.3	286.6	288.4	290.7	292.5	294.8	296.6
YESBANK	1712.9	1642.6	1664.3	1688.6	1710.3	1734.6	1756.3	1780.6
ZEEL	516.5	504.8	507.8	512.1	515.1	519.4	522.4	526.7



BP WEALTH

Technical Research Desk

Tel: +91 22 61596173

Institutional Sales Desk

Tel: +91 22 61596403/04/05

Disclaimer Appendix

Analyst s holding in the Stock : Nil

Analyst s Certification:

We analysts and the authors of this report, hereby certify that all of the views expressed in this research report accurately reflect our personal views about any and all of the subject issuer s or securities. We also certify that no part of our compensation was, is, or will be directly or indirectly related to the specific recommendation s or view s in this report. Analysts aren't registered as research analysts by FINRA and might not be an associated person of the BP Equities Pvt. Ltd. Institutional Equities.

General Disclaimer

This report has been prepared by the research department of BP EQUITIES Pvt. Ltd, is for information purposes only. This report is not construed as an offer to sell or the solicitation of an offer to buy or sell any security in any jurisdiction where such an offer or solicitation would be illegal.

BP EQUITIES Pvt. Ltd have exercised due diligence in checking the correctness and authenticity of the information contained herein, so far as it relates to current and historical information, but do not guarantee its accuracy or completeness. The opinions expressed are our current opinions as of the date appearing in the material and may be subject to change from time to time. Prospective investors are cautioned that any forward looking statement are not predictions and are subject to change without prior notice.

Recipients of this material should rely on their own investigations and take their own professional advice. BP EQUITIES Pvt. Ltd or any of its affiliates or employees shall not be in any way responsible for any loss or damage that may arise to any person from any inadvertent error in the information contained in this report. BP EQUITIES Pvt. Ltd. or any of its affiliates or employees do not provide, at any time, any express or implied warranty of any kind, regarding any matter pertaining to this report, including without limitation the implied warranties of merchantability, fitness for a particular purpose, and non-infringement. The recipients of this report should rely on their own investigations.

BP EQUITIES Pvt. Ltd and/or its affiliates and/or employees may have interests/ positions, financial or otherwise in the securities mentioned in this report. Opinions expressed are our current opinions as of the date appearing on this material only. While we endeavor to update on a reasonable basis the information discussed in this material, there may be regulatory, compliance, or other reasons that prevent us from doing so.

This report is not directed to or intended for display, downloading, printing, reproducing or for distribution to or use by any person in any locality, state and country or other jurisdiction where such distribution, publication or use would be contrary to the law or regulation or would subject to BP EQUITIES Pvt. Ltd or any of its affiliates to any registration or licensing requirement within such jurisdiction.

Corporate Office:

4th floor,
Rustom Bldg,
29, Veer Nariman Road, Fort,
Mumbai-400001
Phone- +91 22 6159 6464
Fax-+91 22 6159 6160
Website- www.bpwealth.com

Registered Office:

24/26, 1st Floor, Cama Building,
Dalal street, Fort,
Mumbai-400001
BP Equities Pvt. Ltd.
CIN No: U67120MH1997PTC107392