

Weekly Tactical Picks

Sectoral Indices

Index	Last Close	WoW (% Change)	P/E	Dividend Yield (%)
Sensex	71,424	-1.58%	24.93	1.12
Nifty 50	21,572	-1.47%	22.73	1.24
Nifty Midcap 50	13,473	0.89%	21.86	1.03
Nifty Auto	18,651	-0.34%	26.38	0.90
Nifty Bank	46,058	-3.46%	15.47	0.80
Nifty Energy	35,236	0.76%	12.45	2.52
Nifty Financial Serv	20,542	-3.56%	17.39	0.81
Nifty FMCG	55,977	-0.90%	45.09	1.81
Nifty IT	36,698	0.48%	30.87	1.95
Nifty Metal	7,753	-1.85%	32.43	2.81
Nifty PSU Bank	6,055	3.32%	8.58	1.75
Nifty Realty	862	-2.17%	55.46	0.25
Nifty Pharma	17,234	-0.66%	34.72	0.77



23 January 2024

Weekly Tactical Picks 23 January 2024

Weekly Volume Gainers

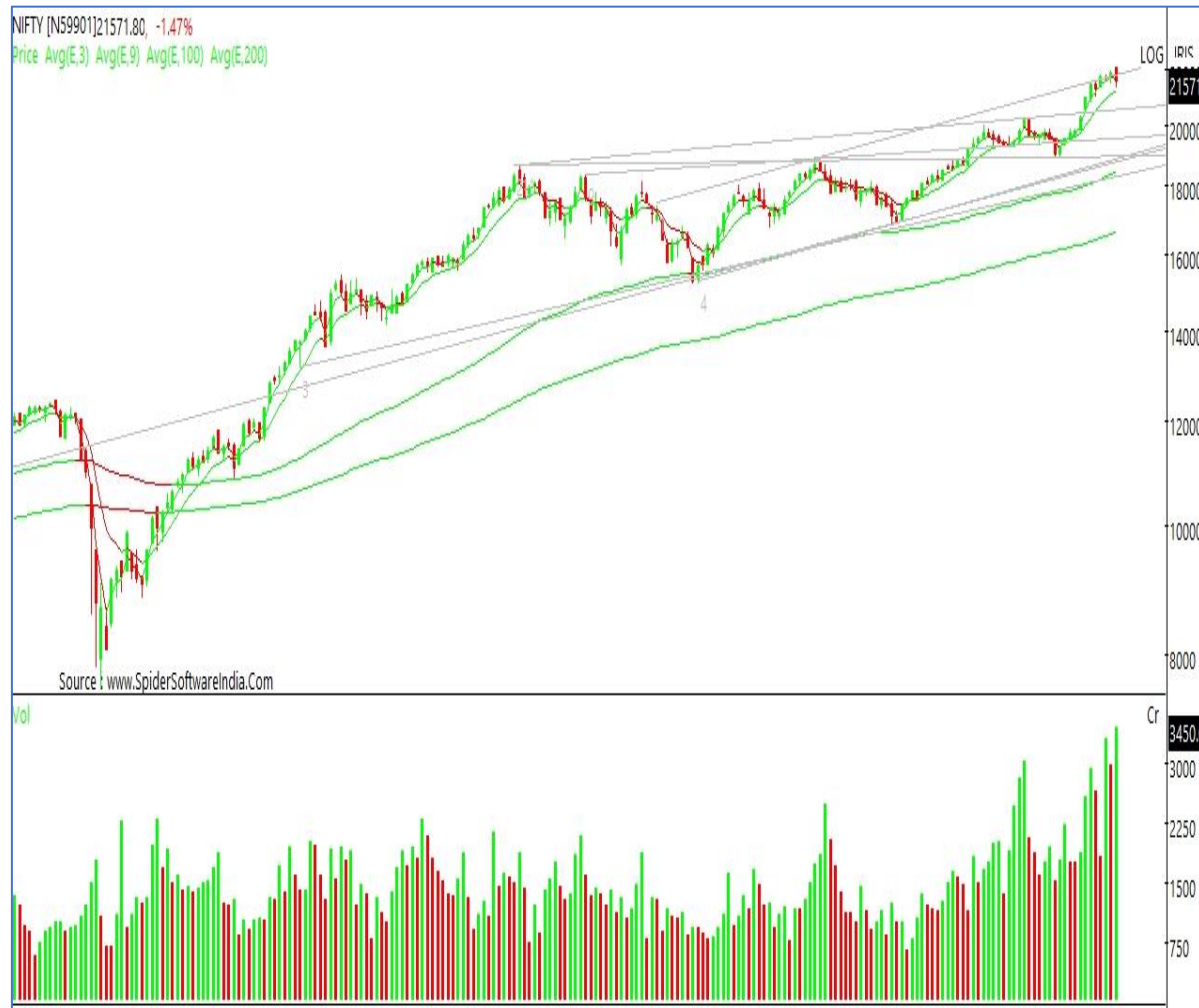
Sl. No	Symbol	LTP	Weekly Average Volume	Weekly Volume Change (Number of times)
1	PRAXIS	37	482087	5.55
2	SIS	515	410679	4.74
3	AUSOMENT	94.25	109235	4.65
4	KEYFINSERV	151.3	25881	4.36
5	NETF	233.19	6622	4.36
6	HNDFDS	554.85	108011	4.34
7	BRNL	78.15	888402	4.34
8	RATNAVEER	125.7	763932	4.05
9	INDNIPPON	648	104988	3.94
10	RAIN	163.4	5552639	3.90

Technical Stock Scanners

Wkly Avg(E,20,E,50) Cutting Avg Upward		Wkly RSI(14,E,9) -Entering Over Bought Zone	
WHIRLPOOL	↑	CENTURYPLY	↓
SFCL	↑	DBCORP	↓
KIRIINDUS	↑	EIHOTEL	↓
NAHARSPING	↑	GRSE	↓
KHAICHEM	↑	HFCL	↓
Wkly Avg(E,20,E,50) Cutting Avg Downward		Wkly RSI(14,E,9) Entering Over Sold Zone	
NGCT	↓	GUJNRECOKE	↑
NUVOCO	↓	NETFINCO	↑
STEELTUBES	↓	KINETICMOT	↑
ESILVER	↓	LITL	↑
EXXARO	↓	UGARSUGAR	↑

Weekly Tactical Picks 23 January 2024

NIFTY (21571.80)



Weekly Technical View

The benchmark index NIFTY50 witnessed strident fall last week after testing an all time high of 22124 and ended below its key level 21600 due to Q3 earnings and mixed global cues. Technically the index closed with bearish kind of candlestick pattern on weekly chart suggesting weak bias and selling pressure may continue in the upcoming week. Also, the weekly momentum indicators like MACD and RSI are accelerating the downside risk. The support and resistance part, the index has resistance @ 21650/21750 levels. If NIFTY index moves above 21750, could take the index towards the levels of 22050 and 22125 near term. However, on the downside, the support will be at 21330-280 levels. Breakdown of 21210 would invite further selling pressure and then we could see NIFTY testing at 20970/20770 levels. Traders are advised to keep an eye on interest rate decisions of the BoJ and ECB, along with US GDP data, more quarterly numbers announcement and pre-Budget sentiment which would be predicted to initiative the market active.

Weekly Tactical Picks 23 January 2024

1. JSW ENERGENCY - Cmp (510.65)



Buy JSW ENERGY (504-512), Target : 548/556, Stop loss : 482, Holding Period : 14-16 days

2. TIMKEN - Cmp (3428.60)



Buy TIMKEN (3420-3440), Target : 3690/3758, Stop loss : 3260, Holding Period : 14-16 days

Weekly Tactical Picks

23 January 2024

Research Desk

S. Devarajan	Head - Technical & Derivatives Research	devarajan.s@way2wealth.com
Jebaris Nadar	Research Associate	jebarisn@way2wealth.com

Disclaimer

Analyst Certification: I, Devarajan Sadasivam, the research analysts and authors of this report, hereby certify that the views expressed in this research report accurately reflect our personal views about the subject securities, issuers, products, sectors or industries. It is also certified that no part of the compensation of the analyst(s) was, is, or will be directly or indirectly related to the inclusion of specific recommendations or views in this research. The analyst(s), principally responsible for the preparation of this research report, receives compensation based on overall revenues of the company (Way2Wealth Brokers Private Limited, hereinafter referred to as Way2Wealth) and has taken reasonable care to achieve and maintain independence and objectivity in making any recommendations.

It is confirmed that the authors of this report has not received any compensation from the companies mentioned in the report in the preceding 12 months. Our research professionals are paid in part based on the profitability of Way2Wealth, which include earnings from other business. Neither Way2Wealth nor its directors, employees, agents or representatives shall be liable for any damages whether direct or indirect, incidental, special or consequential including lost revenue or lost profits that may arise from or in connection with the use of the information contained in this report.

This report is for the personal information of the authorized recipient and does not construe to be any investment, legal or taxation advice to you. Way2Wealth is not soliciting any action based upon it. Nothing in this research shall be construed as a solicitation to buy or sell any security or product, or to engage in or refrain from engaging in any such transaction. The contents of this material are general and are neither comprehensive nor appropriate for every individual and are solely for the informational purposes of the readers. This material does not take into account the specific objectives, financial situation or needs of an individual/s or a Corporate/s or any entity/s.

This research has been prepared for the general use of the clients of the Way2Wealth and must not be copied, either in whole or in part, or distributed or redistributed to any other person in any form. If you are not the intended recipient you must not use or disclose the information in this research in any way. Though disseminated to all the customers simultaneously, not all customers may receive this report at the same time. Way2Wealth will not treat recipients as customers by virtue of their receiving this report. The distribution of this document in other jurisdictions may be restricted by the law applicable in the relevant jurisdictions and persons into whose possession this document comes should inform themselves about, and observe any such restrictions.

The report is based upon information obtained from sources believed to be reliable, but we do not make any representation or warranty that it is accurate, complete or up to date and it should not be relied upon as such. Way2Wealth or any of its affiliates or employees makes no warranties, either express or implied of any kind regarding any matter pertaining to this report, including, but not limited to warranties of suitability, fitness for a particular purpose, accuracy, timeliness, completeness or non-infringement. We accept no obligation to correct or update the information or opinions in it. Way2Wealth or any of its affiliates or employees shall not be in any way responsible for any loss or damage that may arise to any person from any inadvertent error in the information contained in this report. The recipients of this report should rely on their own investigations. In no event shall Way2Wealth be liable for any damages of any kind, including, but not limited to, indirect, special, incidental, consequential, punitive, lost profits, or lost opportunity, whether or not Way2Wealth has advised of the possibility of such damages.

This material contains statements that are forward-looking; such statements are based upon the current beliefs and expectations and are subject to significant risks and uncertainties. Actual results may differ from those set forth in the forward-looking statements. These uncertainties include but are not limited to: the risk of adverse movements or volatility in the securities markets or in interest or foreign exchange rates or indices; adverse impact from an economic slowdown; downturn in domestic or foreign securities and trading conditions or markets; increased competition; unfavorable political and diplomatic developments; change in the governmental or regulatory policies; failure of a corporate event and such others. This is not an offer to buy or sell or a solicitation of an offer to buy or sell any security or instrument or to participate in any particular trading strategy. No part of this material may be copied or duplicated in any form by any means or redistributed without the written consent of Way2Wealth. In no event shall any reader publish, retransmit, redistribute or otherwise reproduce any information provided by Way2Wealth in any format to anyone. Way2Wealth and its affiliates, officers, directors and employees including persons involved in the preparation or issuance of this report may from time to time have interest in securities / positions, financial or otherwise in the securities related to the information contained in this report.

This information is subject to change without any prior notice. Way2Wealth reserves at its absolute discretion the right to make or refrain from making modifications and alterations to this statement from time to time. Nevertheless, Way2Wealth is committed to providing independent and transparent recommendations to its clients, and would be happy to provide information in response to specific client queries.

Investment in securities market are subject to market risks. Read all the related documents carefully before investing.

Registration granted by SEBI, membership of BASL (in case of IAs) and certification from NISM in no way guarantee performance of the intermediary or provide any assurance of returns to investors.

Way2Wealth Brokers Pvt.Ltd.(CIN U67120KA2000PTC027628) SEBI Rgn. No.: INH200008705

Registered Office: Rukmini Towers, 3rd& 4th Floor, # 3/1, Platform Road, Sheshadripuram, Bangalore - 560 020,

Website: www.way2wealth.com Email: research@way2wealth.com *Way2wealth Research is also available on Bloomberg WTWL<GO>*

