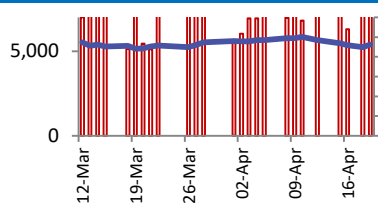
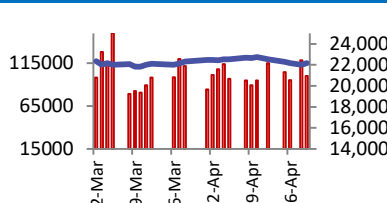


BSE



Open	72000
High	73210
Low	71816
Close	73088
Change	599
Volume (Lacs)	6540
Turnover (Rs.inCr)	8124

NSE



Open	21862
High	22180
Low	21778
Close	22147
Change	151
Volume(Lacs)	38001
Turnover(Rs.in Cr)	100281

World Markets	Current	Previous	Pt. Chg	Var(%)
Dow	37986	37775	211	0.6%
Dow Futures	38291	38208	83	0.2%
Nasdaq	15282	15602	(319)	-2.0%
FTSE	7896	7877	19	0.2%
Nikkei	37335	37068	267	0.7%
Hang Seng	16528	16224	304	1.9%
Gift Nifty	22261	22204	58	0.3%
Straits Singapore	3223	3177	46	1.5%
South Korea	2615	2592	23	0.9%
Taiwan	19503	19527	(24)	-0.1%
Shanghai	3055	3065	(10)	-0.3%

Commodity Prices	Current	Previous	Pt. Chg	Var(%)
Copper (\$/MT)	9914	9876	38.0	0.4%
Alumin (\$/MT)	2661	2669	(8.5)	-0.3%
Zinc (\$/MT)	2845	2852	(7.0)	-0.2%
Brent Crude (\$/bbl)	86.6	87.3	(0.7)	-0.8%
Gold (\$/Ounce)	2365	2392	(27.3)	-1.1%
Silver (\$/Ounce)	27.9	28.7	(0.8)	-2.6%
Light Crude (\$/bbl)	82.7	83.1	(0.4)	-0.5%
N G (\$/mmbtu)	1.7	1.8	(0.0)	-0.2%
Sugar (\$/MT)	563.5	568.9	(5.4)	-0.9%
Rubber (Rs./kg)	179.0	180.0	(1.0)	-0.6%
Baltic Dry Index	1919	1901	18.0	0.9%

Currency Exchange Rate	Current	Previous	Var(%)
Rs./\$ rate	83.47	83.54	-0.09%
Rs./ Euro	88.97	89.15	-0.20%
Rs./Chinese Yuan	11.52	11.53	-0.06%
Yen /\$ rate	154.69	154.64	0.03%
\$ US/Euro	1.07	1.07	0.07%

Dollar Index	Current	Previous	Var(%)
Dollar Index	105.26	105.28	-0.02%

Support/ Resistance Levels for Today		
	Nifty	Bank Nifty Fut
Support 1	21970	47400
Support 2	21900	47150
Resistance	22240	48000

Securities in Ban For Trade	
BALRAMCHIN	BANDHANBNK
SAIL	METROPOLIS
IDEA	EXIDEIND
ZEEL	PEL
BIOCON	

Market Review

US: The Nasdaq and the S&P 500 ended lower on Friday as Netflix shares weighed, but American Express kept the Dow afloat after quarterly earnings from both companies, while growing pessimism that the Federal Reserve would cut interest rates soon also dented sentiment.

Asia: Asian markets traded higher on Monday as focus shifted to a slew of company earnings and economic data this week.

India: The Indian indices broke their four-day losing streak and ended higher as banks and metals displayed strong performances. Nifty ended 0.69% higher at 22,147.00 and the Sensex was up 0.83% at 73,088.33. **Market is expected to open gap up and likely to witness positive move during the day.**

Global Economy: The People's Bank of China kept its benchmark loan prime rate unchanged on Monday as widely expected, amid some recent improvement in the Chinese economy, although the central bank is still expected to trim rates eventually. The PBOC kept its one-year LPR at 3.45%, while the five-year LPR, which is used to set mortgage rates, was left at 3.95%.

Australia's treasurer warned on Monday that events in the Middle East are fueling concerns for the global economy and will shape the government's budget in May, with near-term outlook downgrades for its major trading partners. The treasury will also downgrade its growth forecasts for economies like China, Japan and Britain. The government is expected to report a budget surplus for the year ended June 30, although the revenue upgrade would be smaller than the year before as commodity prices fell and labour market softened.

Commodities: Gold prices edged lower on Monday as higher U.S. Treasury yields weighed on dollar-priced bullion, while investors kept a close watch on any potential escalation in the Middle East conflict.

Oil prices fell at Asia's open on Monday, dragged down by a renewed focus on market fundamentals, as Israel and Iran played down the risks of an escalation of hostilities in the Middle East after Israel's apparently small strike on Iran.

Currency: The euro and yen were relatively steady in early Asian trading on Monday and the US dollar stayed near its highs after last week's hectic policy and geopolitical developments.

FII Derivative Transactions (Rs. Cr)

Contracts	Purchase		Sell		Net Value	Open Interest (OI)		OI (Previous day)		Change	
	Contract	Value	Contract	Value		Contract	Value	Contract	Value	Contract	Value
Index Future	108117	10514	103663	9855	659	351390	33337	306614	28442	44776	4895
Index Option	17758176	1548118	17631508	1542365	5753	3965416	358205	3057188	276093	908228	82112
Stock Future	562522	45952	508776	41736	4216	3232274	263183	3246110	264388	(13836)	(1205)
Stock Option	938530	81895	943533	82146	(251)	413792	34867	418461	35071	(4669)	(204)
Total	19367345	1686479	19187480	1676102	10377	7962872	689592	7028373	603994	934499	85598

FII All Activity-BBG (Rs Cr)	Buy	Sell	Net
10-Apr-24	13830	10599	3230
12-Apr-24	15335	23274	(7940)
15-Apr-24	10735	13969	(3233)
16-Apr-24	10994	14258	(3265)
18-Apr-24	18545	22708	(4163)
Month to date-Apr	197519	202773	(5254)
FII (Prov.) (Rs Cr)	Buy	Sell	Net
12-Apr-24	15405	23432	(8027)
15-Apr-24	10444	13712	(3268)
16-Apr-24	10209	14677	(4468)
18-Apr-24	18231	22492	(4260)
19-Apr-24	16286	16156	129
Month to date-Apr	171612	193842	(22229)
DII (Prov.) (Rs. Cr)	Buy	Sell	Net
12-Apr-24	17220	10879	6342
15-Apr-24	13579	8816	4763
16-Apr-24	13537	11497	2040
18-Apr-24	14274	11988	2286
19-Apr-24	9397	9449	(53)
Month to date-Apr	161282	140014	21269
FII Debt - BBG (Rs. Cr)	Buy	Sell	Net
10-Apr-24	3458	2082	1377
12-Apr-24	2353	4119	(1766)
15-Apr-24	2119	2103	16
16-Apr-24	1304	4668	(3363)
18-Apr-24	1742	4324	(2582)
Month to date-Apr	25948	32122	(6174)

Market Breadth	BSE		NSE	
	No.	%	No.	%
Advance	1662	43%	1162	44%
Decline	2127	54%	1396	53%
Unchanged	114	3%	95	4%

Market Turnover	19-Apr	18-Apr	Var (%)
BSE Cash	8124	7395	10%
NSE Cash	100281	118491	-15%
NSE Futures	216512	224730	-4%
NSE Options	13681364	53065033	-74%
Total (Rs.Cr)	14006281	53415649	-74%

Volatility Index	19-Apr	18-Apr
Volatility Index	13.46	13.04

Index PE - TTM	19-Apr	Yr. High	Yr. Low
Sensex	25.0	26.0	22.2
Nifty	22.7	28.8	20.3

Corporate News

UltraTech Cement buys grinding unit from India Cements, announces expansion

UltraTech Cement has announced the acquisition of a grinding unit from India Cements for Rs 315 crore and said it will invest an additional Rs 504 crore to expand capacity of two units. The company said it has entered into an Asset Purchase Agreement with the seller. (BS)

Hero MotoCorp inaugurates assembly unit in Nepal

Hero Motocorp has opened an assembly facility in Nepal in partnership with distributor CG Motors. The facility, with a capacity of 75,000 units per annum, will assemble four products locally, including motorcycles and scooters. This move is expected to bring new investments and job opportunities to the region. Hero Motocorp aims to expand its sales and service network in Nepal, while CG Motors plans to leverage Hero Motocorp's expertise to scale up operations and build a robust market presence. (ET)

JSW Energy arm bags 700 MW solar project from NTPC; capacity up at 13.3 GW

JSW Neo Energy has received a letter of award from NTPC for setting up a 700 MW solar project. With the latest project win, JSW Energy's total locked-in generation capacity has increased to 13.3 GW of which 3.1 GW is solar power. The company aims to reach 20 GW generation capacity and 40 GWh of energy storage capacity before 2030. JSW Energy has set an ambitious target of achieving Carbon Neutrality by 2050. (BS)

Economy

Direct tax collections jump 18% to Rs 19.58 trn; exceed estimates in FY24

India's net direct tax collections surged by a massive 17.7 per cent year-on-year, surpassing even revised estimates by a wide margin. Net collections of income and corporate taxes, which make up for most of the direct taxes, in FY24 financial year exceeded the Budget estimates by Rs 1.35 trillion (7.40 per cent) and the revised estimates by Rs 13,000 crore. (BS)

International

Tesla cuts price of Full Self-Driving software by a third to \$8,000; cuts prices around the globe

Musk is betting the technology will become a major source of revenue for the world's most valuable automaker. But he has for years failed to achieve the goal of self-driving capability, with the technology under growing regulatory and legal scrutiny. Grappling with falling sales and an intensifying price war for electric vehicles, Tesla cut prices by nearly \$2,000 across its lineup in China, mirroring price cuts in the United States. Tesla has cut prices in a number of its major markets, including Germany. (Reuters)

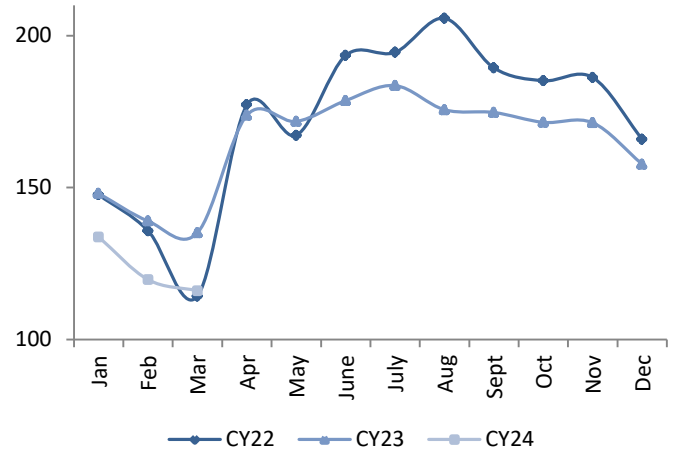
Top 5 Nifty Gainers	19-Apr	18-Apr	Var(%)
BAJFINANCE	7120	6893	3.3%
M&M	2083	2025	2.9%
MARUTI	12711	12405	2.5%
HDFCBANK	1531	1495	2.4%
JSWSTEEL	865	845	2.4%
Top 5 Nifty Losers	19-Apr	18-Apr	Var(%)
BAJAJ-AUTO	8805	9021	-2.4%
HCLTECH	1448	1467	-1.3%
NESTLEIND	2438	2463	-1.0%
DIVISLAB	3672	3709	-1.0%
TCS	3826	3862	-0.9%

BSE Index Watch	Last	1 day	1 wk	1 mth	1 yr
SENSEX	73088	0.8%	-2.6%	0.4%	22.5%
MIDCAP	40005	-0.4%	-2.7%	3.1%	61.0%
SMLCAP	45434	0.0%	-1.5%	6.2%	60.9%
AUTO	49083	0.3%	-1.9%	1.7%	65.5%
BANKEX	53721	1.0%	-3.0%	1.2%	12.5%
Capital Goods	61035	-0.2%	-2.4%	3.9%	73.5%
FMCG	19109	0.5%	-2.2%	-1.0%	13.5%
Health Care	34423	-0.4%	-3.6%	-0.2%	50.7%
IT	34140	-0.6%	-5.4%	-4.7%	28.0%
METAL	30244	0.9%	-0.9%	8.6%	52.4%
Oil & Gas	28233	-0.2%	-1.3%	3.9%	57.4%
Power	6904	-0.4%	-2.5%	5.6%	90.7%
Realty	7287	-0.7%	-3.7%	5.5%	114.9%

NSE USD Futures	19-Apr	18-Apr	Var (%)
April Expiry (Rs./\$)	83.53	83.53	0.0%
May Expiry (Rs./\$)	83.49	83.54	-0.1%
Total Turnover (Rs. Crore)	6672	9904	-33%

Sectors	TTM PE
Auto	31.74
Auto Ancillary	45.4
Banking	16.04
Engineering	40.48
Cement	78.93
Diamonds & Jewellery	46.05
Housing Finance	20.07
Infrastructure & Const	30.18
Metals-Aluminium	39.82
Metal - Steel	17.69
Oil Expl.	20.83
Pharma	12.95
Power – Gen. Supp.	45.81
Information Tech.	21.95
Sugar	14.93
Telecom Serv. Prov.	84.42
Tyres	25.85

All India Tea Prices (Rs/Kg) (Source: teaboard.gov.in)



10 year G-Sec Yield	Current	Previous	Change
US	4.66%	4.62%	4 bps
Japan	0.87%	0.85%	2 bps
India	7.23%	7.19%	4 bps
UK	4.23%	4.27%	(4) bps
Libor 3 Mths	5.59%	5.59%	0 bps

Indian Eco Data	Current	Previous	Var(%)
Forex Reserve (US\$ in bn)	525	528	-0.7%
Inflation - WPI	0.53%	0.20%	33 bps
Inflation - CPI	4.85%	5.09%	(24) bps

India GDP	Q3FY24	Q2FY24	Var(%)
Growth	8.36%	7.60%	76 bps

Monetary Policy	Current	Previous	Change
Repo Rate	6.50%	6.50%	0 bps
Reverse Repo Rate	3.35%	3.35%	0 bps
CRR	4.50%	4.50%	0 bps
O/S Banking System Liquidity (Rs bn)	1032	697	335.3

IIP Growth %	Jan-24	Jan-23	Apr-Feb
IIP	5.7	6.0	6.2
Mining	5.9	9.0	8.5
Manufacturing	3.2	4.5	5.7
Electricity	5.6	12.7	7.0

Bulk Deal As On 19/04/24

BSE					
Security Code	Security Name	Client Name	Deal	Quantity	Price
543319	AAPLUSTRAD	ANDAZ JAIN	S	56000	12.97
543319	AAPLUSTRAD	SHUBHAM ASHOKBHAI PATEL	B	440000	12.9
540956	BHATIA	ORCHARD ROAD PROPERTIES PVT LT	B	864290	21.93
540956	BHATIA	WAYBROAD TRADING PRIVATE LIMITED	S	870000	21.93
543439	BRANDBUCKET	DEV GANPAT PAWAR	S	278000	10
543439	BRANDBUCKET	SANKET RAMESH FUKE	B	120000	10
538817	CAPPIPES	NK SECURITIES RESEARCH PVT. LTD.	S	1236819	22.65
538817	CAPPIPES	NK SECURITIES RESEARCH PVT. LTD.	B	1236819	22.61
538817	CAPPIPES	SAHASTRAA ADVISORS PRIVATE LIMITED	S	900000	22.62
538817	CAPPIPES	SAHASTRAA ADVISORS PRIVATE LIMITED	B	50000	22.15
543594	DPL	POOJA TEKRIWAL	B	174000	8.5
543594	DPL	SUMAN TEKRIWAL	B	258000	8.88
531259	ESHAMEDIA	LAKSHMINARAYANPURAM VENKATRAMAN RAMNARAYAN	S	100000	6.61
531259	ESHAMEDIA	OPULUS BIZSERVE PRIVATE LIMITED	B	195276	6.61
531259	ESHAMEDIA	SHRIDHAR PARAMESHWARAN IYER	S	100000	6.62
523696	FORTISMLR	MULTIPLIER SHARE & STOCK ADVISORS PRIVATE LIMITED	S	277500	97
523696	FORTISMLR	TOPGAIN FINANCE PRIVATE LIMITED	S	215000	97
540190	FRANKLININD	HJS SECURITIES PRIVATE LIMITED	B	640762	5.31
540190	FRANKLININD	SNEHABEN CHRISTIAN	S	433170	5.37
544156	GCONNECT	PURE BROKING PRIVATE LIMITED	S	24000	41.33
543490	GMRP&UI	SINGULARITY HOLDINGS LIMITED	B	4000000	57.3
543490	GMRP&UI	VARANIUM INDIA OPPORTUNITY LTD	S	7943771	57.3
543490	GMRP&UI	WINRO COMMERCIAL INDIA LIMITED	B	3992811	57.3
536709	INDRENEW	HARNISH NITIN BRAHMBHATT	S	118670	17.69
536709	INDRENEW	PROFIN COMMODITIES PRIVATE LIMITED	S	81016	17.7
536709	INDRENEW	VINEET KUMAR	B	200000	17.68
544160	JAYKAILASH	POOJA ADVANI	S	65600	81.28
544160	JAYKAILASH	RIKHAV SECURITIES LIMITED	S	78400	81.18
544160	JAYKAILASH	RIKHAV SECURITIES LIMITED	B	6400	79.52
504076	JYOTI	SHAH DIPAK KANAYALAL	S	121303	78.58
511535	NDASEC	VEDANT MANGLUNIA	S	46971	59.1
543400	OMNIPOTENT	GRISHMA VIRAL JHAVERI	B	44000	8.75
543400	OMNIPOTENT	INDHUMATHI RAMESH	S	48000	8.65
530095	PRADHIN	DEEPAL PRAVINBHAI SHAH HUF	B	35500	45.5
530095	PRADHIN	GUJARAT TOOLROOM LIMITED	S	63500	45.41
530251	RISAINTL	MANJUDEVIMEENA	S	950000	0.66
530025	SAMYAKINT	DIVYANSH SURYA	B	50000	25.52
530025	SAMYAKINT	SUNITA GARG	S	48101	25.52
531982	SPECFOOD	NITTAL NARESHBHAI SHAH	S	26579	31.28
539255	STARDELTA	BIJAL PRADEEP DESAI	S	19311	1253.35
542765	TRANSPACT	EMERALD COMMERCIAL LIMITED	B	12000	361
542765	TRANSPACT	GAURANG JITENDRA PAREKH	S	12000	361
542765	TRANSPACT	GAURANG JITENDRA PAREKH HUF	S	8000	361
542765	TRANSPACT	USHA SHARMA	B	4000	361
542765	TRANSPACT	VENKATESHWARA INDUSTRIAL PROMOTION CO LIMITED	B	5000	361
544157	VRUDDHI	ASHWIN STOCKS AND INVESTMENT PRIVATE LIMITED	B	18000	126.99
544157	VRUDDHI	MULTIPLIER SHARE & STOCK ADVISORS PRIVATE LIMITED	S	14000	127
544157	VRUDDHI	MULTIPLIER SHARE & STOCK ADVISORS PRIVATE LIMITED	B	6000	127
539337	WAAREE	PURVESH MUKESHKUMAR SHAH	S	100100	2015.08

NSE

Security Code	Security Name	Client Name	Deal	Quantity	Price
ASPIRE	Aspire & Innovative Adv L	L7 HITECH PRIVATE LIMITED	BUY	114000	93.43
COFFEEDAY	Coffee Day Enterprise Ltd	TIKRI INVESTMENTS	SELL	1192508	62.97
CGRAPHICS	Creative Graphics S Ind L	ANKUSH KEDIA	BUY	160000	213.55
DEEM	Deem Roll Tech Limited	SS CORPORATE SECURITIES LIMITED	SELL	47000	109
ELECTCAST	Electrosteel Cast Ltd.	ISHARES II PUBLIC LIMITED COMPANY - ISHARES GLOBAL WATER UCITS ETF	BUY	3228750	196.21
IONEXCHANG	Ion Exchange (India) Ltd	ISHARES II PUBLIC LIMITED COMPANY - ISHARES GLOBAL WATER UCITS ETF	SELL	855047	541.08
JYOTI-RE	Jyoti Structures Ltd	GDN INVESTMENTS PRIVATE LIMITED	BUY	1684656	7.45
JYOTI-RE	Jyoti Structures Ltd	MEMG FAMILY OFFICE LLP	SELL	954136	7.48
JYOTI-RE	Jyoti Structures Ltd	PRASHANT RAGHUNATH DESHPANDE	SELL	1092023	7.42
JYOTI-RE	Jyoti Structures Ltd	RAJTARU ENTERPRISES	BUY	1000000	7.38
KTL	Kalahridhaan Trendz Ltd	MITESH MAKVANA	BUY	120000	50.75
KTL	Kalahridhaan Trendz Ltd	PANKAJKUMAR JAYANTILAL PATEL	SELL	120000	50.75
KRYSTAL	Krystal Integrated Ser L	NIRAJ RAJNIKANT SHAH	SELL	75000	797.05
CBAZAAR	Net Avenue Technologies L	ARUN MAHESHWARI HUF	BUY	128000	21
CBAZAAR	Net Avenue Technologies L	CHANAKYA OPPORTUNITIES FUND I	SELL	288000	21
ONELIFECAP	Onelife Cap Advisors Ltd	DARSHAN GULAB CHANDAK	SELL	66872	19.61
PRUDMOULI	PrudentialSugar-Roll Sett	PILOT CONSULTANTS PVT LTD	SELL	300000	26.25
PTC	PTC India Limited	BNP PARIBAS ARBITRAGE	SELL	1618173	215.88
PTC	PTC India Limited	ISHARES GLOBAL CLEAN ENERGY ETF	BUY	2750232	217.53
PTC	PTC India Limited	ISHARES GLOBAL CLEAN ENERGY UCITS ETF	BUY	3867095	217.53
RADIOWALLA	Radiowalla Network Ltd	MANSI SHARE AND STOCK ADVISORS PVT LTD	SELL	94400	127.9
VIPULLTD	Vipul Limited	SRESTHA FINVEST LIMITED	SELL	625974	32.4

Disclosure:

Research Reports that are published by Nirmal Bang Securities Private Limited (hereinafter referred to as "NBSPL") are for private circulation only. NBSPL is a registered Research Analyst under SEBI (Research Analyst) Regulations, 2014 having Registration no. INH000001766. NBSPL is also a registered Stock Broker with National Stock Exchange of India Limited, BSE Limited, Metropolitan Stock Exchange of India Limited, Multi Commodity Exchange of India Limited and , National Commodity and Derivative Exchange Limited in Capital Market , Equity and Commodities derivatives segments and Currency Derivatives Segment .

NBSPL has other business divisions with independent research teams separated by Chinese walls, and therefore may, at times, have different or contrary views on stocks and markets.

NBSPL or its associates have not been debarred / suspended by SEBI or any other regulatory authority for accessing / dealing in securities Market since last 20 years. NBSPL, its associates or analyst or his relatives do not hold any financial interest (Except Investment) in the subject company. NBSPL or its associates or Analyst do not have any conflict or material conflict of interest at the time of publication of the research report with the subject company. NBSPL or its associates or Analyst or his relatives may or may not hold beneficial ownership of 1% or more in the subject company at the end of the month immediately preceding the date of publication of this research report.

NBSPL or its associates / analyst has not received any compensation / managed or co-managed public offering of securities of the company covered by Analyst during the past twelve months. NBSPL or its associates have not received any compensation or other benefits from the company covered by Analyst or third party in connection with the research report. Analyst has not served as an officer, director or employee of Subject Company. NBSPL / analyst has not been engaged in market making activity of the subject company.

Analyst Certification: The research analysts and authors of these reports, hereby certify that the views expressed in this research report accurately reflects my/our personal views about the subject securities, issuers, products, sectors or industries. It is also certified that no part of the compensation of the analyst(s) was, is, or will be directly or indirectly related to the inclusion of specific recommendations or views in this research. The analyst(s) principally responsible for the preparation of this research report and has taken reasonable care to achieve and maintain independence and objectivity in making any recommendations.

Disclaimer:

The Research Report is for the personal information of the authorized recipient and does not construe to be any investment, legal or taxation advice. NBSPL is not soliciting any action based upon it. Nothing in the research report shall be construed as a solicitation to buy or sell any security or product, or to engage in or refrain from engaging in any such transaction. In preparing the research report, we did not take into account the investment objectives, financial situation and particular needs of the reader.

The research report has been prepared for the general use of the clients of NBSPL and must not be copied, either in whole or in part, or distributed or redistributed to any other person in any form. If you are not the intended recipient you must not use or disclose the information in the research report in any way. Though disseminated to all the customers simultaneously, not all customers may receive the research report at the same time. NBSPL will not treat recipients as customers by virtue of their receiving the research report. The research report is not directed or intended for distribution to or use by any person or entity resident in a state, country or any jurisdiction, where such distribution, publication, availability or use would be contrary to law, regulation or which would subject NBSPL & its group companies to registration or licensing requirements within such jurisdictions.

The report is based on the information obtained from sources believed to be reliable, but we do not make any representation or warranty that it is accurate, complete or up-to-date and it should not be relied upon as such. We accept no obligation to correct or update the information or opinions in it. NBSPL or any of its affiliates or employees shall not be in any way responsible for any loss or damage that may arise to any person from any inadvertent error in the information contained in the research report. NBSPL or any of its affiliates or employees do not provide, at any time, any express or implied warranty of any kind, regarding any matter pertaining to this report, including without limitation the implied warranties of merchantability, fitness for a particular purpose, and non-infringement. The recipients of the research report should rely on their own investigations.

This information is subject to change without any prior notice. NBSPL reserves its absolute discretion and right to make or refrain from making modifications and alterations to this statement from time to time. Nevertheless, NBSPL is committed to providing independent and transparent recommendations to its clients, and would be happy to provide information in response to specific client queries.

Before making an investment decision on the basis of research report, the reader needs to consider, with or without the assistance of an adviser, whether the advice is appropriate in light of their particular investment needs, objectives and financial circumstances. There are risks involved in securities trading. The price of securities can and does fluctuate, and an individual security may even become valueless. International investors are reminded of the additional risks inherent in international investments, such as currency fluctuations and international stock market or economic conditions, which may adversely affect the value of the investment. Opinions expressed are subject to change without any notice. Neither the company nor the director or the employees of NBSPL accept any liability whatsoever for any direct, indirect, consequential or other loss arising from any use of the research report and/or further communication in relation to the research report. Here it may be noted that neither NBSPL, nor its directors, employees, agents or representatives shall be liable for any damages whether direct or indirect, incidental, special or consequential including lost revenue or lost profit that may arise from or in connection with the use of the information contained in the research report.

Copyright of this document vests exclusively with NBSPL.

Our reports are also available on our website

Registration granted by SEBI and certification from NISM in no way guarantee performance of NBSPL or provide any assurance of returns to investors.

Nirmal Bang Research (Division of Nirmal Bang Securities Pvt. Ltd.)

B-2, 301/302, Marathon Innova,
Opp. Peninsula Corporate Park
Off. Ganpatrao Kadam Marg
Lower Parel(W), Mumbai-400013
Board No. : 91 22 6723 8000/8001
Fax. : 022 6723 8010