





NIFTY SPOT : IMMEDIATE RESISTANCE AT 15120-15220

NIFTY [N59901]14981.75, -1.20%
Price Avg(E,13)



Source : IRIS, BP Equities Research

Technical View

Index opened the week with a gap up opening but failed to sustain the gains and witnessed selling pressure at higher levels. Index violated the streak of higher highs and higher lows and made a lower low. Index has formed bearish engulfing candlestick pattern occurrence of such candlestick after previous indecisive candlestick suggests sellers out performing buyers and makes the recent peak a strong resistance at higher levels. RSI has formed negative divergence which is a bearish signal and suggests caution at higher levels. This week the selling has come with rise in volume which is a bearish signal and suggests recent peak to act as immediate resistance for short term. **Going ahead index has immediate resistance at 15120-15220, till it maintains below this range it is expected to continue its decline towards 14880-14740.**

Key Data

% Change (D)	(0.91)
% Change (W)	(1.20)
21 SMA (D)	14751
21 SMA (W)	13319
100 EMA (D)	13310
100 EMA (W)	11585
MACD (D)	274.80
MACD (W)	920.95
RSI (D)	58.02
RSI (W)	71.37

NIFTY : 14982

SUP :14880-14740-14550

RES : 15120-15220-15360

HANSRAJ MODI,CMT,HEAD TECHNICAL & DERIVATIVE
hansrajmodi@bpwealth.com

AAKASH CHAUHAN, DERIVATIVE ANALYST
aakash@bpwealth.com

ROHAN SHAH, TECHNICAL ANALYST
rohanshah@bpwealth.com

RICHES VANARA, RESEARCH ASSOCIATE
riches@bpwealth.com



BANKNIFTY : IMMEDIATE RESISTANCE AT 36640

BANKNIFTY [N59906]35841.60 -0.74%
Price Avg(E,13)



Source: IRIS, BP Equities Research

Technical View

Index opened the week with a gap up opening but failed to sustain the gains and witnessed selling pressure at higher levels. Index has formed candlestick with longer upper shadow which shows selling pressure at higher levels and occurrence of such candlestick after previous indecisive candlestick suggests seller outperforming buyers which make the recent peak important resistance for short term. This week the selling has come with rise in volume which suggests recent peak to act as immediate resistance for short term. **Going ahead index has immediate resistance at 36640, for index to continue its up move it needs to sustain above this level while support comes at 35280-34930.**

Key Data

% Change (D)	(2.04)
% Change (W)	(0.74)
21 SMA (D)	34395
21 SMA (W)	29472
100 SMA (D)	29449
100 EMA (W)	27362
MACD (D)	1320.28
MACD (W)	2850.49
RSI (D)	62.01
RSI (W)	74.84

BANKNIFTY : 35842

SUP : 35280-34930-34540

RES : 36000-36640-37280



MOMENTUM PICKS

HINDPETRO

HINDPETRO [N1406] 244.00, 9.00%
Price Avg(E,100)



BUY

LOG IRIS 236.27
12/04/19 Fri
Op 260.40
Hi 264.35
Lo 247.05
Cl 260.15
Av 286.25

Technical View

The stock has surpassed the immediate supply zone of 230-240 which was acting as strong resistance for the past many months, also it has given breakout form double bottom pattern which is a bullish signal for medium term trend, the breakout has occurred after consolidation of over two months which increases the reliability of the breakout. Volume has declined on price decline and sideways price movement and increased on price advance which is a bullish signal and compliments the bullish view of price. RSI has given a range shift wherein it has surpassed the immediate resistance zone of 55-60 which was acting as strong resistance for the past three months which is a bullish signal and compliments the bullish view of price.

We recommend to BUY HINDPETRO @244 and on any decline towards 233 for the target of 289 while stop loss comes at 224 in 2-4 weeks.

Execution Data

Target (Rs)	285
Stop loss (Rs)	224
Buying Range (Rs)	CMP-233
Last Close Price (Rs)	244
% change weekly	9

Key Data

21 SMA (D)	226
21 SMA (W)	211
MACD (W)	6.7
RSI (W)	64
MARKET CAP	371.8(B)



MOMENTUM PICKS

PETRONET

PETRONET [N11351] 252.25, 4.15%
Price Avg(E,100)

BUY



Technical View

After sharp up move form Oct-Dec'20 stock underwent sideways correction and is moving sideways in the range of 270-230 for the past two months and recently has reversed after taking support at the lower end of the consolidation zone. It has formed bullish reversal candlestick and has reversed after consolidating around 100 EMA for past couple of weeks which suggests the recent trough to act as strong support and short term trend to turn bullish. Volume has declined on price decline and sideways price movement and increased on price advance which is a bullish signal and indicative of up move in price.

We recommend to BUY PETRONET @252 for the target of 302 while stop loss comes at 233 in 2-4 weeks.

Execution Data

Target (Rs)	302
Stop loss (Rs)	233
Buying Range (Rs)	CMP
Last Close Price (Rs)	252.25
% change weekly	4.2

Key Data

21 SMA (D)	
21 SMA (W)	245
MACD (W)	1.24
RSI (W)	53
MARKET CAP	378.4(B)



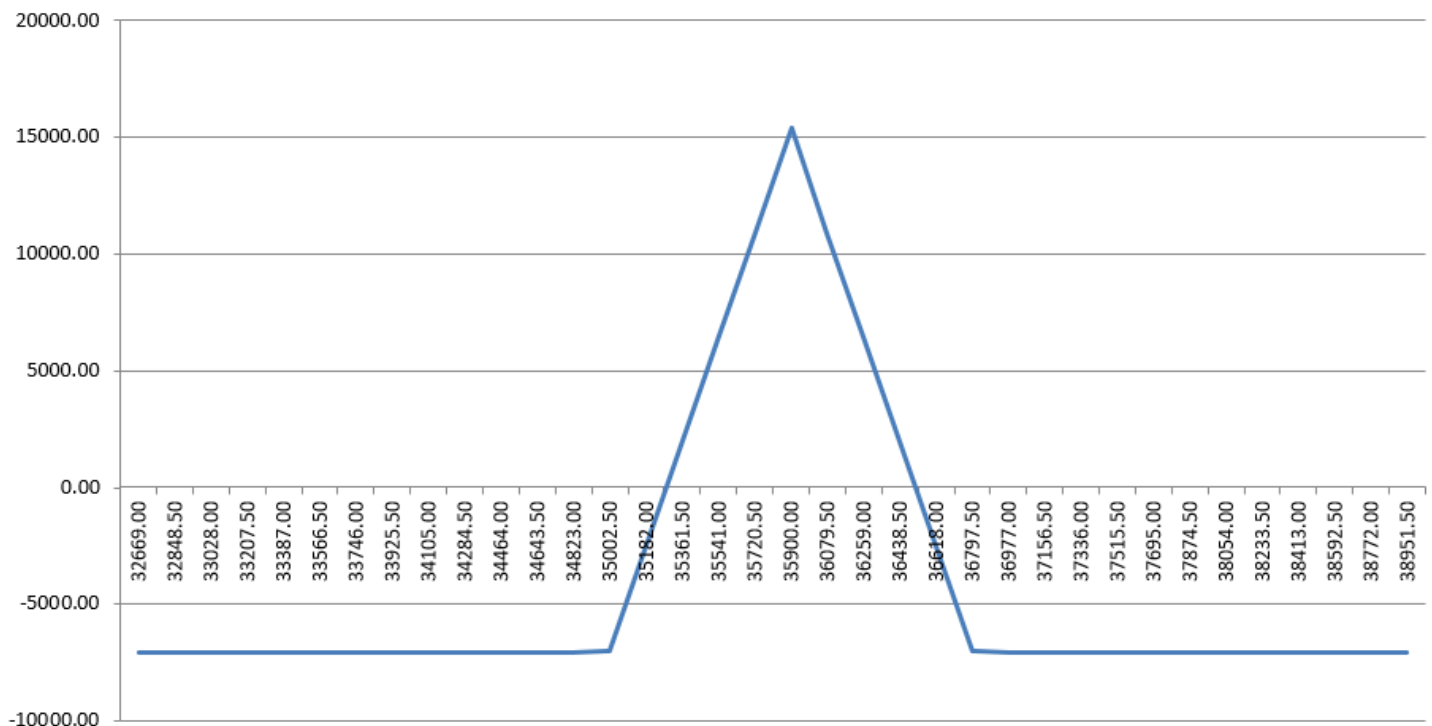
BANKNIFTY OPTION STRATEGY

Banknifty closed 0.74% lower this week @ 35842. We have seen call addition in 36000, 36300, 37000 call options as call writers are active in these strike prices and we have seen major put addition in 35500, 35000, 34000 put options as put writers are writing put options. Highest Put option volume is visible in 36000 PE which will act as a good support and highest volume on call side is visible in 37000 CE. Highest OI concentration is visible in 35000 PE which will act as a support and 37000 CE which will act as a resistance. Banknifty max pain is at 35700.

OPTION STRATEGY: -

STRATEGY : SELL 35900 CE @ 470, BUY 36800 CE @ 160 AND SELL 35900 PE @ 450, BUY 35000 PE @ 143 (25FEB21 EXPIRY)
 MAX PROFIT : Rs.15400
 MAX LOSS : Rs.7075
 LOT SIZE : 25 Shares
 BREAK EVEN POINT : 35283 - 36517
 MARGIN REQUIRED : Rs.80000 APPROX

OPTION PAYOFF: -



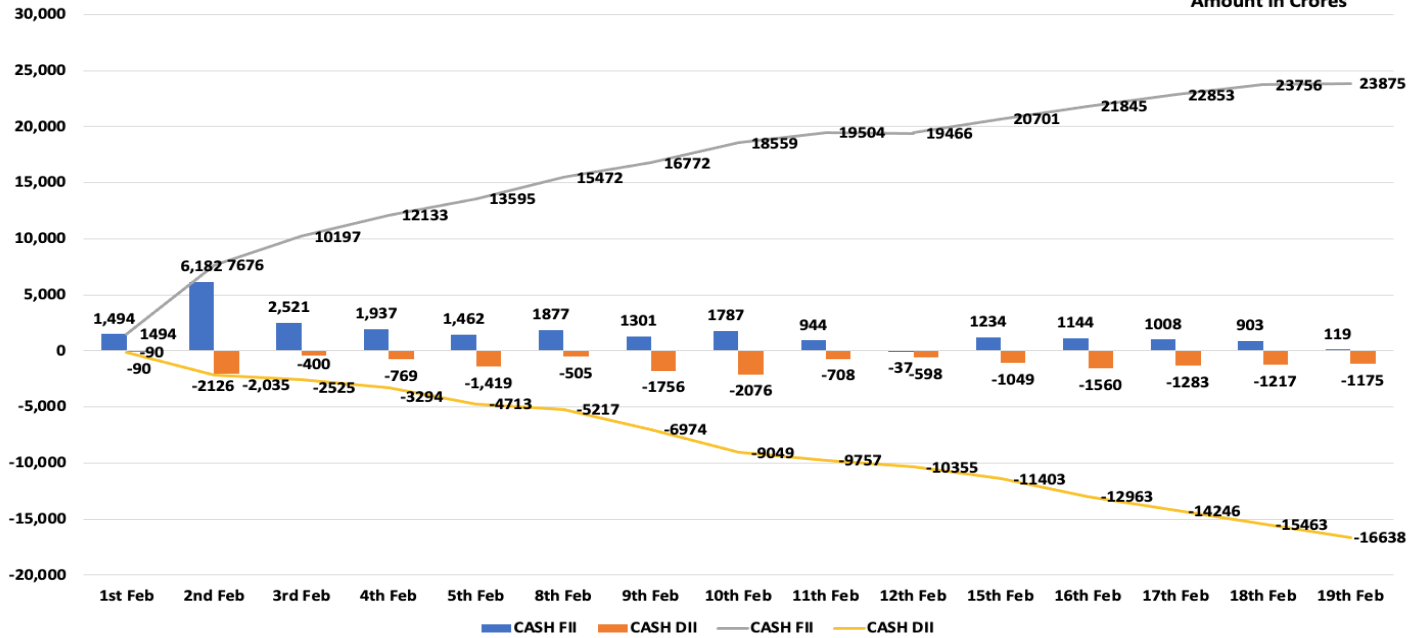


FII DII DATA

FII DII CASH DATA

FII/DII CASH STATS DAILY AND CUMULATIVE

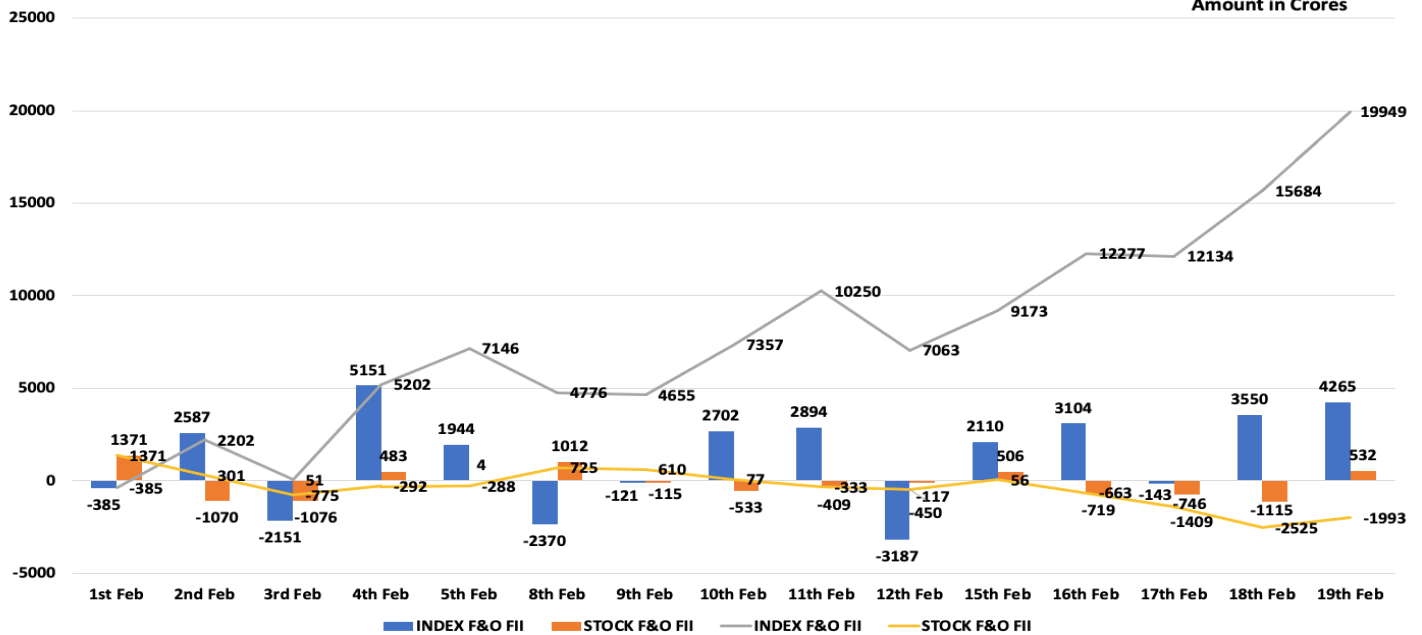
Amount in Crores



FII F&O DATA

FII F&O STATS DAILY AND CUMULATIVE

Amount in Crores





MOMENTUM PICK PERFORMANCE

DATE	ACTION	STOCK	EP	SL	TGT	CMP	STATUS	%GAIN
12-Oct	BUY	JK CEMENT	1645	1560	1800	2610	TARGET ACHIEVED	6%
12-Oct	BUY	RAMCO CEM	771	719	880	962	TARGET ACHIEVED	7%
14-Oct	BUY	MUTHOOTFIN	1156	1105	1300	1297	PROFIT BOOKED @ 1205	4%
15-Oct	BUY	BERGER PAINTS	613	585	670	741	TARGET ACHIEVED	7%
19-Oct	BUY	OFSS	3225	3030	3600-3800	3049	FAIL	(6%)
19-Oct	BUY	KANSAINER	502	466	580	562	TARGET ACHIEVED	12%
20-Oct	BUY	GODREJCP	691	669	742	710	FAIL	(3%)
22-Oct	BUY	VOLTAS	713	675	790	1001	TARGET ACHIEVED	8%
26-Oct	BUY	ASHOKLEY	81.8	74	98	123	TARGET ACHIEVED	13%
26-Oct	BUY	CEATLTD	1122	1033	1300	1587	TARGET ACHIEVED	5%
28-Oct	BUY	HDFCLIFE	591	572	630	711	TARGET ACHIEVED	5%
02-Nov	BUY	KPRMILL	739	683	850	921	TARGET ACHIEVED	8%
02-Nov	BUY	TATACONSUM	493	465	560	617	TARGET ACHIEVED	14%
02-Nov	BUY	COLPAL	1516	1434	1700	1555	PROFIT BOOKED @ 1598	5%
09 Nov	BUY	ESCORTS	1285	1200	1460	1336	TARGET ACHIEVED	6%
09 Nov	BUY	CROMPTON	309	289	350	397	FAIL	(7%)
12 Nov	BUY	JUBILANT	700	674	770	773	TARGET ACHIEVED	8%
17 Nov	BUY	AUROPHARMA	852	790	989	889	PROFIT BOOKED @910	7%
17 Nov	BUY	HINDALCO	209	194	240	308	TARGET ACHIEVED	10%
23 Nov	BUY	CCL	260	242	300	232	PROFIT BOOKED @268	3%
23 Nov	BUY	ENDURANCE	1084	1020	1260	1395	TARGET ACHIEVED	13%
23 Nov	BUY	POLYCAB	958	890	1100	1329	TARGET ACHIEVED	7%
03 Dec	BUY	CESC	620	585	690	611	FAIL	(6%)
07 Dec	BUY	BHARATFORG	552	512	630	603	FAIL	(7%)
07 Dec	BUY	MARICO	395	367	450	425	PROFIT BOOKED @ 422	7%
09 Dec	BUY	OFSS	3118	2960	3405	3050	TARGET ACHIEVED	8%
14 Dec	BUY	GLENMARK	527	490	615	481	FAIL	(7%)
14 Dec	BUY	ECLERX	809	757	936	971	FAIL	(7%)
21-Dec	BUY	MPHASIS	1373	1280	1580	1689	TARGET ACHIEVED	12%



DATE	ACTION	STOCK	EP	SL	TGT	CMP	STATUS	%GAIN
21-Dec	BUY	RELAXO	787	740	886	874	TARGET ACHIEVED	9%
28-Dec	BUY	SBILIFE	874	820	985	882	PROFIT BOOKED @ 953	9%
28-Dec	BUY	LALPATHLAB	2272	2120	2630	2429	PROFIT BOOKED @ 2440	7%
04-Jan	BUY	BAJAJ-AUTO	3481	3320	3834	4001	TARGET ACHIEVED	7%
04-Jan	BUY	METROPOLIS	2015	1880	2320	1971	TARGET ACHIEVED	12%
11-Jan	BUY	CRISIL	1956	1835	2210	1958	OPEN	-
11-Jan	BUY	PHND	2340	2200	2680	2261	FAIL	(6%)
18-Jan	BUY	CESC	692	640	790	611	FAIL	(8%)
18-Jan	BUY	PEL	1625	1522	1835	1841	FAIL	(7%)
25-Jan	BUY	GODREJCP	790	745	880	710	FAIL	(6%)
25-Jan	BUY	FORTIS	165	152	198	159	OPEN	-
28-Jan	BUY	AJANTA PHARMA	1755	1680	1980	889	OPEN	-
15-Feb	BUY	CDSL	538	496	630	571	OPEN	-
15-Feb	BUY	MGL	1141	1045	1350	1183	OPEN	-

OPTION STRATEGY PERFORMANCE

DATE	ACTION	STOCK	EP	SL	TGT	EXIT	STATUS	Gain/Loss
19-Oct	BUY	AMBUJACEM BULL CALL SPREAD	2.75	0	5.5	1.25	CLOSED	-8550
26-Oct	BUY	BAJAJ-AUTO BULL CALL SPREAD	35	0	70	13	EXITED	-2000
2-Nov	BUY	AMARAJABAT BULL CALL SPREAD	9.6	4.8	19.20	17.10	CLOSED	7500
9-Nov	BUY	TORNTPOWER BULL CALL SPREAD	3.45	1.70	7	1.70	CLOSED	-5000
17-Nov	BUY	BANKNIFTY SPREAD	849	1289	0	766	CLOSED	2079
23-Nov	BUY	BANKNIFTY SPREAD	587	800	0	310	CLOSED	6925
23-Nov	BUY	NIFTY SPREAD	139	200	0	86	CLOSED	3975
1-Dec	BUY	BANKNIFTY SPREAD	578	761	0	258	CLOSED	8000
1-Dec	BUY	NIFTY SPREAD	139	200	0	145	CLOSED	-450
7-Dec	BUY	BANKNIFTY SPREAD	499	700	0	309	CLOSED	4750
14-Dec	BUY	BANKNIFTY SPREAD	552	750	0	281	CLOSED	6775
21-Dec	BUY	BANKNIFTY SPREAD	476	600	0	366	CLOSED	2750
28-Dec	BUY	BANKNIFTY SPREAD	477	600	0	600	CLOSED	-3075
4-Jan	BUY	BANKNIFTY SPREAD	530	680	0	680	CLOSED	-3750
11-Jan	BUY	BANKNIFTY SPREAD	488	600	0	390	CLOSED	2450
18-Jan	BUY	BANKNIFTY SPREAD	568	750	0	299	CLOSED	6725
25-Jan	BUY	BANKNIFTY SPREAD	534	700	0	700	CLOSED	-4150
8-Feb	BUY	BANKNIFTY SPREAD	430	600	0	105	CLOSED	8125
15-Feb	BUY	BANKNIFTY SPREAD	613	750	0	497	CLOSED	2900

**Technical Research Desk****Tel: +91 22 61596406/11****Institutional Sales Desk****Tel: +91 22 61596403/04/05****Disclaimer Appendix****Analysts holding in the Stock : Nil****Analysts Certification:**

We analysts and the authors of this report, hereby certify that all of the views expressed in this research report accurately reflect our personal views about any and all of the subject issuer s or securities. We also certify that no part of our compensation was, is, or will be directly or indirectly related to the specific recommendation s or view s in this report. Analysts aren't registered as research analysts by FINRA and might not be an associated person of the BP Equities Pvt. Ltd. Institutional Equities.

General Disclaimer

This report has been prepared by the research department of BP EQUITIES Pvt. Ltd, is for information purposes only. This report is not construed as an offer to sell or the solicitation of an offer to buy or sell any security in any jurisdiction where such an offer or solicitation would be illegal.

BP EQUITIES Pvt. Ltd have exercised due diligence in checking the correctness and authenticity of the information contained herein, so far as it relates to current and historical information, but do not guarantee its accuracy or completeness. The opinions expressed are our current opinions as of the date appearing in the material and may be subject to change from time to time. Prospective investors are cautioned that any forward looking statement are not predictions and are subject to change without prior notice.

Recipients of this material should rely on their own investigations and take their own professional advice. BP EQUITIES Pvt. Ltd or any of its affiliates or employees shall not be in any way responsible for any loss or damage that may arise to any person from any inadvertent error in the information contained in this report. BP EQUITIES Pvt. Ltd. or any of its affiliates or employees do not provide, at any time, any express or implied warranty of any kind, regarding any matter pertaining to this report, including without limitation the implied warranties of merchantability, fitness for a particular purpose, and non-infringement. The recipients of this report should rely on their own investigations.

BP EQUITIES Pvt. Ltd and/or its affiliates and/or employees may have interests/ positions, financial or otherwise in the securities mentioned in this report. Opinions expressed are our current opinions as of the date appearing on this material only. While we endeavor to update on a reasonable basis the information discussed in this material, there may be regulatory, compliance, or other reasons that prevent us from doing so.

This report is not directed to or intended for display, downloading, printing, reproducing or for distribution to or use by any person in any locality, state and country or other jurisdiction where such distribution, publication or use would be contrary to the law or regulation or would subject to BP EQUITIES Pvt. Ltd or any of its affiliates to any registration or licensing requirement within such jurisdiction.

Corporate Office:

4th floor, Rustom Bldg,
29, Veer Nariman Road, Fort, Mumbai-400001
Phone- +91 22 6159 6464 Fax-+91 22 6159 6160
Website- www.bpwealth.com

Registered Office:

24/26, 1st Floor, Cama Building,
Dalal street, Fort,
Mumbai-400001

BP Equities Pvt. Ltd.**CIN No: U67120MH1997PTC107392**