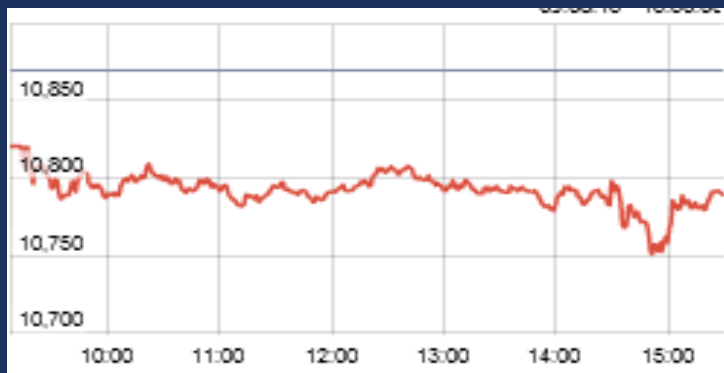


6-Dec-18

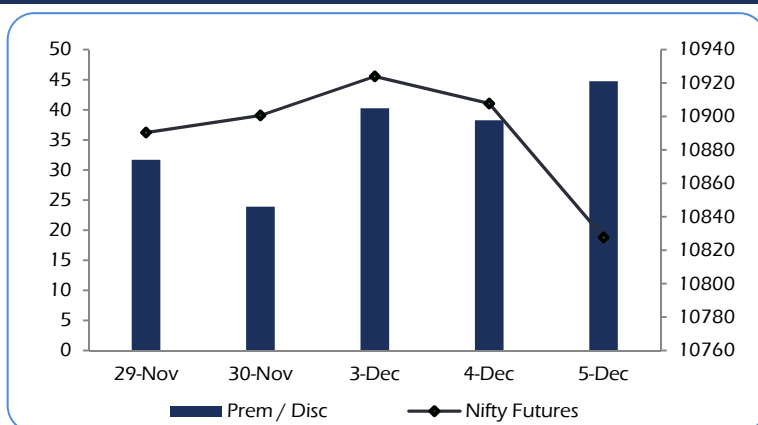
Date	Nifty Spot	Nifty Future	Pre / Dis	Nifty Future Curr. expiry OI	Nifty Future Total OI	PCR (OI)	VIX	Most Active Call	Most Active Put	P/E	Nifty P/B
05-Dec	10783	10,828	44.75	2,03,31,000	2,08,99,500	1.24	18.39	11100	11000	26.09	3.41
04-Dec	10870	10,908	38.25	2,00,70,525	2,05,60,650	1.31	18.11	10700	10800	26.30	3.44
Chg	-0.80%	-0.73%		1.30%	1.65%		1.55%				

Nifty Options Data is for the expiry 27-Dec-18

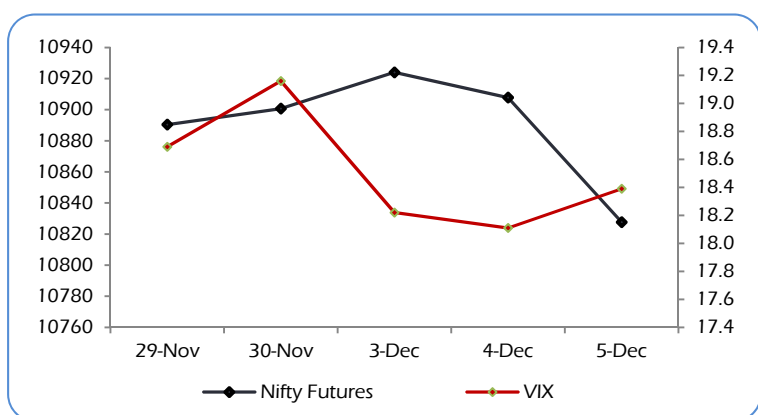
CNX NIFTY



NIFTY PREMIUM / DISCOUNT



CNX NIFTY vs INDIA VIX



MARKET OVERVIEW

India Volatility Index (VIX), a gauge for market's short term expectation of volatility increased by 1.55% and reached 18.39.

Nifty December 2018 futures closed at 10827.65 on Wednesday, at a premium of 44.75 points over spot closing of 10782.90.

Nifty January 2019 futures ended at 10874.25, at a premium of 91.35 points over spot closing.

Nifty December futures saw an addition of 0.26 million (mn) units, taking the total outstanding open interest (OI) to 20.33 mn units.

The Nifty Put Call Ratio (PCR) finally stood at 1.24 for December month contract.

The top five scrips with highest PCR on OI were V-Guard Industries (3.65), Mangalore Refinery & Petrochemicals (2.70), TCS (1.27), Oriental Bank of Commerce (1.17), Infosys (1.15) and Cholamandalam Investment and Finance (1.04).

From the most active contracts, Sun Pharmaceutical Industries December 2018 futures traded at a discount of 2.15 points at 415.05 compared with spot closing of 417.20. The numbers of contracts traded were 58,456.

Yes Bank December 2018 futures traded at a premium of 1.10 points at 174.20 compared with spot closing of 173.10. The numbers of contracts traded were 26,115.

Reliance Industries December 2018 futures traded at a premium of 3.10 points at 1161.25 compared with spot closing of 1158.15. The numbers of contracts traded were 23,353.

Indiabulls Housing Finance December 2018 futures traded at a premium of 5.25 points at 777.25 compared with spot closing of 772.00. The numbers of contracts traded were 15,822.

Bharat Forge December 2018 futures traded at a premium of 2.75 points at 533.00 compared with spot closing of 530.25. The numbers of contracts traded were 15,801.

Nifty Call Options

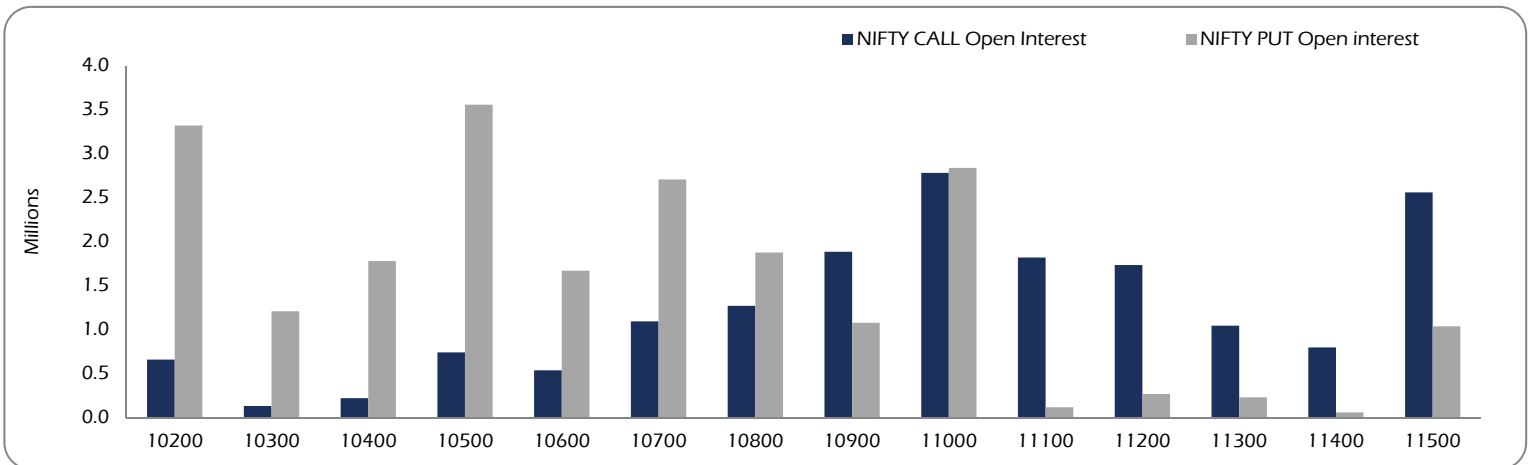
Strike	Nifty Call OI	Chg in OI	Curr. IV	Prev. IV	LTP	Net Chg
10500	7,41,000	-40650	17.3	15.2	400	-70.7
10600	5,38,500	-20325	17.3	15.8	326	-65.3
10700	10,94,325	-6600	17.0	15.7	256	-62.2
10800	12,71,025	168150	16.5	15.8	197	-55.9
10900	18,85,875	55875	16.1	15.5	143	-47.2
11000	27,81,900	52875	15.6	15.0	99	-38.8
11100	18,19,275	257700	15.1	14.5	64.2	-29.7
11200	17,33,925	241125	14.5	14.1	39.3	-21.3
11300	10,45,650	114900	14.3	13.8	23.0	-13.8
11400	7,97,250	41475	14.2	13.7	13.2	-8.5

Nifty Put Options

Strike	Nifty Put OI	Chg in OI	Curr. IV	Prev. IV	LTP	Net Chg
10500	35,55,675	31125	19.7	20.9	79.6	9.3
10400	16,69,800	31575	20.3	21.5	103.2	12.4
10500	27,06,975	69900	19.7	20.9	134.0	16.8
10600	18,76,725	-161400	19.2	20.5	169.8	20.9
10700	10,77,150	-130575	18.7	20.0	214	28.1
10800	28,37,850	-256575	18.0	19.5	270	38.5
10900	1,17,600	-17925	17.2	18.8	333	47.1
11000	2,68,575	-5925	17.1	18.1	409	58.1
11100	2,29,800	-12900	16.2	18.3	489	64.0
11200	60,075	975	15.7	18.0	570	64.4

Nifty Options Data is for the expiry 27-Dec-18

OPEN INTEREST – NIFTY CALL & NIFTY PUT

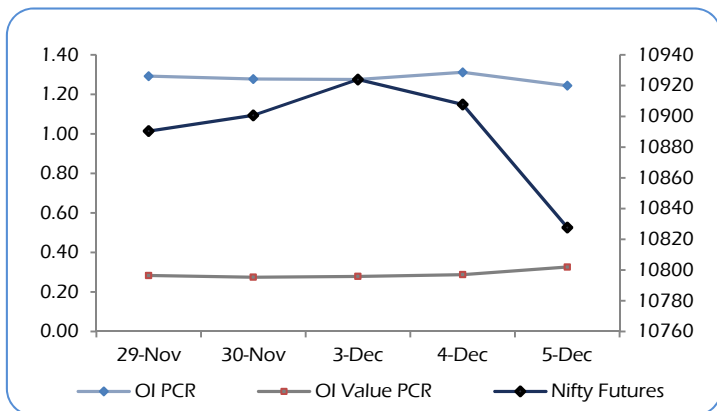


Among Nifty calls, 11000 SP from the December month expiry was the most active call with an addition of 0.26 million open interests.

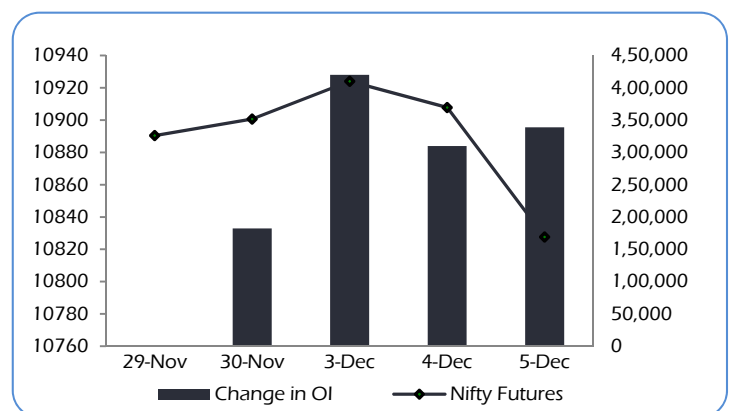
Among Nifty puts, 11,000 SP from the December month expiry was the most active put with a contraction of 0.26 million open interests.

The maximum OI outstanding for Calls was at 11,000 SP (2.78mn) and that for Puts was at 10,000 SP (3.89mn).

OI PCR, OI Value PCR vs NIFTY FUTURES



Change in OPEN INTEREST (Total) vs NIFTY FUTURES



NIFTY OPTIONS

Nifty Bullish Call Spread

Action	Strike	Premium	Max Profit	Max Loss
Buy	10800	196.5	46.60	53.40
Sell	10900	143.1		
Buy	10900	143.1	55.75	44.25
Sell	11000	98.9		
Buy	10800	196.5	102.35	97.65
Sell	11000	98.9		

Nifty Bearish Put Spread

Action	Strike	Premium	Max Profit	Max Loss
Buy	10900	214	55.85	44.15
Sell	10800	170		
Buy	10800	170	64.15	35.85
Sell	10700	134		
Buy	10900	214	120.00	80.00
Sell	10700	134		

Note: Above spread are provided for information purposes.

STOCK OPTIONS

Most Active Calls

Scrip	Strike Price	Price	Spot	Turnover (Rs Crs.)	Expiry
SUNPHARMA	460	8.75	413	315	27-Dec-18
RELIANCE	1180	25.90	1155	344	27-Dec-18
SUNPHARMA	500	3.25	413	310	27-Dec-18
RELIANCE	1160	34.80	1155	320	27-Dec-18
RELIANCE	1200	18.40	1155	326	27-Dec-18

Most Active Puts

Scrip	Strike Price	Price	Spot	Turnover (Rs Crs.)	Expiry
SUNPHARMA	400	15.00	413	308	27-Dec-18
RELIANCE	1140	22.00	1155	275	27-Dec-18
SUNPHARMA	420	22.70	413	199	27-Dec-18
ASHOKLEY	100	3.35	104	158	27-Dec-18
RELIANCE	1120	15.80	1155	218	27-Dec-18

STOCK FUTURES

LONG BUILDUP (Price rise OI rise)

Stock	CMP	Price Chg	OI Chg	(NSE+BSE) %Delivery	Recovery
DLF	177	1.8%	0.8%	8%	3%
HDFC	1973	1.7%	1.0%	65%	3%
HCLTECH	1051	1.4%	1.2%	41%	3%
INFRATEL	258	1.4%	0.2%	21%	2%
GLENMARK	627	1.1%	0.8%	26%	2%

SHORT BUILDUP (Price fall OI rise)

Stock	CMP	Price chg	OI chg	(NSE+BSE) %Delivery	Fall from High
SUNPHARMA	413	-6.8%	8.5%	27%	8%
RELINFRA	307	-6.6%	1.9%	12%	8%
RELCAPITAL	219	-5.9%	4.8%	16%	6%
BHEL	66	-5.7%	4.6%	46%	6%
MOTHERSUMI	158	-5.7%	0.9%	30%	5%

SHORT UNWINDING (Price rise OI fall)

Stock	CMP	Price Chg	OI Chg	(NSE+BSE) %Delivery	Recovery
ARVIND	104	2.9%	-6.8%	12%	3%
HINDUNILVR	1848	2.2%	-0.5%	34%	3%
STAR	470	2.1%	-9.3%	29%	5%
IDBI	61	1.5%	-6.6%	47%	2%
CADILAHC	358	1.5%	-1.3%	17%	1%

LONG UNWINDING (Price fall OI fall)

Stock	CMP	Price chg	OI chg	(NSE+BSE) %Delivery	Fall from High
DHFL	211	-5.9%	-2.7%	15%	6%
HINDALCO	221	-5.1%	-3.8%	30%	4%
EQUITAS	119	-4.8%	-4.9%	8%	5%
M&MFIN	421	-4.7%	-2.9%	39%	4%
ORIENTBANK	87	-4.3%	-4.3%	13%	4%

Long positions were witnessed in stocks like DLF & HDFC

Short positions were witnessed in stocks like SUNPHARMA & RELINFRA

FII's ACTIVITY IN DERIVATIVES

05-Dec-18	Buy	Sell	Net	OI	%	OI	%
Rs. Crs				Value	Chg	Contracts	Chg
INDEX FUTURES	2,744	3,909	-1165	25,078	7.3%	3,28,062	9.0%
INDEX OPTIONS	84,462	85,377	-915	55,263	-0.3%	7,54,470	-0.2%
TOTAL INDEX	87,206	89,286	-2,079				
STOCK FUTURES	12,093	12,936	-843	83,669	-1.7%	14,41,422	-0.1%
STOCK OPTIONS	6,514	6,204	310	5,594	9.7%	1,02,441	11.4%
TOTAL STOCKS	18,606	19,140	-533				

NSE DERIVATIVES TURNOVER

Rs. Crs	05-Dec	04-Dec	%	FII's
			Chg	Contribution
INDEX FUTURES	16,832	12,909	30%	40%
INDEX OPTIONS	6,49,128	3,82,171	70%	26%
TOTAL INDEX	6,65,960	3,95,080	69%	
STOCK FUTURES	45,691	44,563	3%	55%
STOCK OPTIONS	35,101	30,643	15%	36%
TOTAL STOCKS	80,792	75,206	7%	

FII's contribution to the total Derivatives turnover
29%
31%
DISCLAIMERS AND DISCLOSURES

LKP Sec. Ltd. (CIN-L67120MH1994PLC080039, www.lkpsec.com) and its affiliates are a full-fledged, brokerage and financing group. LKP was established in 1992 and is one of India's leading brokerage and distribution house. LKP is a corporate trading member of Bombay Stock Exchange Limited (BSE), National Stock Exchange of India Limited (NSE), MCX Stock Exchange Limited (MCX-SX). LKP along with its subsidiaries offers the most comprehensive avenues for investments and is engaged in the businesses including stock broking (Institutional and retail), merchant banking, commodity broking, depository participant, insurance broking and services rendered in connection with distribution of primary market issues and financial products like mutual funds etc.

LKP hereby declares that it has not defaulted with any stock exchange nor its activities were suspended by any stock exchange with whom it is registered in last five years. However, SEBI and Stock Exchanges have conducted the routine inspection and based on their observations have issued advice letters or levied minor penalty on LKP for certain operational deviations in ordinary/routine course of business. LKP has not been debarred from doing business by any Stock Exchange / SEBI or any other authorities; nor has its certificate of registration been cancelled by SEBI at any point of time.

LKP offers research services to clients. The analyst for this report certifies that all of the views expressed in this report accurately reflect his or her personal views about the subject company or companies and its or their securities, and no part of his or her compensation was, is or will be, directly or indirectly related to specific recommendations or views expressed in this report.

Other disclosures by LKP and its Research Analyst under SEBI (Research Analyst) Regulations, 2014 with reference to the subject company(s) covered in this report:-

Research Analyst or his/her relative's financial interest in the subject company: (NO)

LKP or its associates may have financial interest in the subject company.

LKP or its associates and Research Analyst or his/her relative's does not have any material conflict of interest in the subject company. The research Analyst or research entity (LKP) has not been engaged in market making activity for the subject company.

LKP or its associates may have actual/beneficial ownership of 1% or more securities of the subject company at the end of the month immediately preceding the date of publication of Research Report.

Research Analyst or his/her relatives have actual/beneficial ownership of 1% or more securities of the subject company at the end of the month immediately preceding the date of publication of Research Report: (NO)

LKP or its associates may have received any compensation including for investment banking or merchant banking or brokerage services from the subject company in the past 12 months.

LKP or its associates may have received compensation for products or services other than investment banking or merchant banking or brokerage services from the subject company in the past 12 months.

LKP or its associates may have received any compensation or other benefits from the Subject Company or third party in connection with the research report.

Subject Company may have been client of LKP or its associates during twelve months preceding the date of distribution of the research report and LKP may have co-managed public offering of securities for the subject company in the past twelve months.

Research Analyst has served as officer, director or employee of the subject company: (NO)

LKP and/or its affiliates may seek investment banking or other business from the company or companies that are the subject of this material. Our salespeople, traders, and other professionals may provide oral or written market commentary or trading strategies to our clients that reflect opinions that are contrary to the opinions expressed herein, and our proprietary trading and investing businesses may make investment decisions that may be inconsistent with the recommendations expressed herein.

In reviewing these materials, you should be aware that any or all of the foregoing, among other things, may give rise to real or potential conflicts of interest including but not limited to those stated herein. Additionally, other important information regarding our relationships with the company or companies that are the subject of this material is provided herein. This report is not directed to, or intended for distribution to or use by, any person or entity who is a citizen or resident of or located in any locality, state, country or other jurisdiction where such distribution, publication, availability or use would be contrary to law or regulation or which would subject LKP or its group companies to any registration or licensing requirement within such jurisdiction. Specifically, this document does not constitute an offer to or solicitation to any U.S. person for the purchase or sale of any financial instrument or as an official confirmation of any transaction to any U.S. person.

Unless otherwise stated, this message should not be construed as official confirmation of any transaction. No part of this document may be distributed in Canada or used by private customers in United Kingdom.

All trademarks, service marks and logos used in this report are trademarks or registered trademarks of LKP or its Group Companies. The information contained herein is not intended for publication or distribution or circulation in any manner whatsoever and any unauthorized reading, dissemination, distribution or copying of this communication is prohibited unless otherwise expressly authorized. Please ensure that you have read "Risk Disclosure Document for Capital Market and Derivatives Segments" as prescribed by Securities and Exchange Board of India before investing in Indian Securities Market. In so far as this report includes current or historic information, it is believed to be reliable, although its accuracy and completeness cannot be guaranteed.

All material presented in this report, unless specifically indicated otherwise, is under copyright to LKP. None of the material, nor its content, nor any copy of it, may be altered in any way, transmitted to, copied or distributed to any other party, without the prior express written permission of LKP