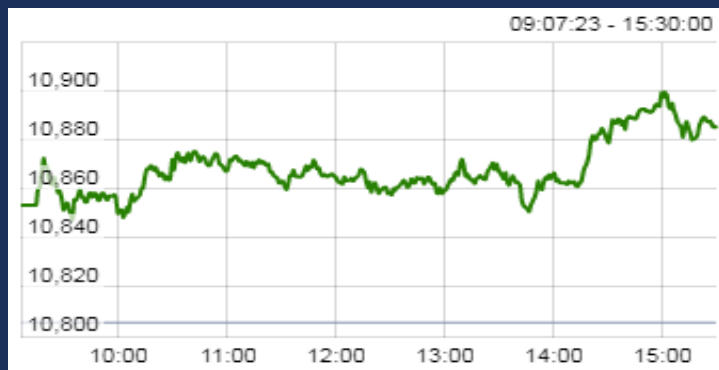


18-Dec-18

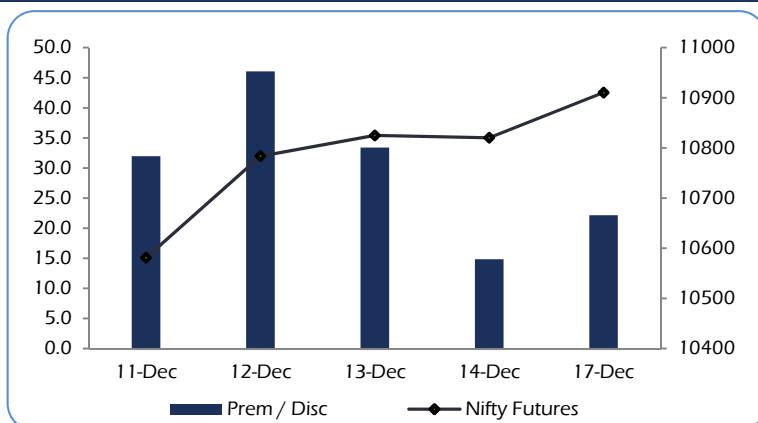
Date	Nifty Spot	Nifty Future	Pre / Dis	Nifty Future Curr. expiry OI	Nifty Future Total OI	PCR (OI)	VIX	Most Active Call	Most Active Put	P/E	Nifty P/B
17-Dec	10888	10,911	22.15	2,09,39,325	2,27,31,825	1.37	14.54	11000	10900	26.34	3.44
14-Dec	10805	10,820	14.85	2,10,25,875	2,25,85,125	1.30	15.16	11100	10800	26.14	3.42
<b>Chg</b>	<b>0.77%</b>	<b>0.83%</b>		<b>-0.41%</b>	<b>0.65%</b>		<b>-4.09%</b>				

Nifty Options Data is for the expiry 27-Dec-18

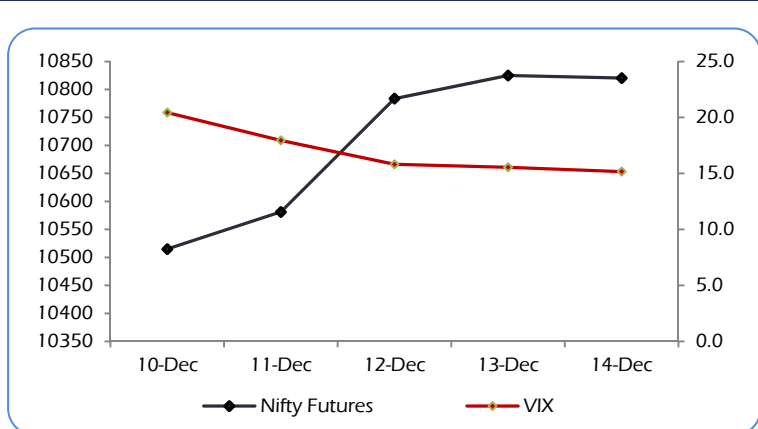
## CNX NIFTY



## NIFTY PREMIUM / DISCOUNT



## CNX NIFTY vs INDIA VIX



## MARKET OVERVIEW

India Volatility Index (VIX), a gauge for market's short term expectation of volatility decreased by 4.09% and reached 14.54.

Nifty December 2018 futures closed at 10910.50 on Monday, at a premium of 22.15 points over spot closing of 10888.35.

Nifty January 2019 futures ended at 10958.05, at a premium of 69.70 points over spot closing.

Nifty December futures saw a contraction of 0.09 million (mn) units, taking the total outstanding open interest (OI) to 20.94 mn units.

The Nifty Put Call Ratio (PCR) finally stood at 1.37 for December month contract.

The top five scrips with highest PCR on OI were MRPL (2.00), V-Guard Industries (1.66), Adani Power (1.50), Hero Motocorp (1.40), Castrol India (1.39) and Godrej Consumer Products (1.34).

From the most active contracts, Reliance Industries December 2018 futures traded at a premium of 1.80 points at 1133.45 compared with spot closing of 1131.65. The numbers of contracts traded were 25,604.

Kotak Mahindra Bank December 2018 futures traded at a premium of 4.30 points at 1226.30 compared with spot closing of 1222.00. The numbers of contracts traded were 25,201.

Tata Motors December 2018 futures traded at a discount of 0.20 points at 174.30 compared with spot closing of 174.50. The numbers of contracts traded were 23,864.

Yes Bank December 2018 futures traded at a premium of 0.90 points at 181.40 compared with spot closing of 180.50. The numbers of contracts traded were 19,397.

Vedanta December 2018 futures traded at a premium of 0.75 points at 206.15 compared with spot closing of 205.40. The numbers of contracts traded were 19,148.

### Nifty Call Options

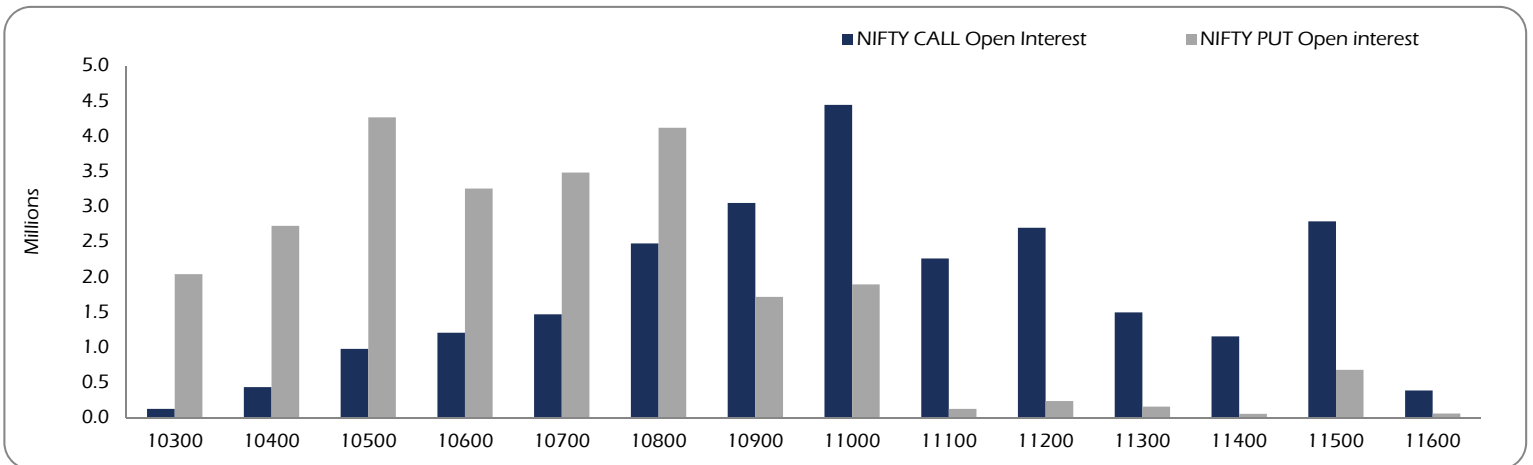
Strike	Nifty Call OI	Chg in OI	Curr. IV	Prev. IV	LTP	Net Chg
10600	12,06,225	-83850	13.3	11.4	327	68.6
10700	14,68,725	-87450	13.2	11.8	242	59.0
10800	24,75,375	-472275	12.4	11.7	162	44.4
10900	30,50,175	-179850	12.2	11.7	99	28.8
11000	44,42,175	-598575	12.0	11.8	53	14.5
11100	22,62,225	260175	11.9	11.4	25	6.8
11200	26,98,050	139950	11.8	11.8	10.0	1.6
11300	14,93,925	71700	12.2	11.9	4.2	0.4
11400	11,54,475	345000	13.5	12.9	2.6	0.4
11500	27,89,250	21375	15.0	14.3	1.9	0.0

### Nifty Put Options

Strike	Nifty Put OI	Chg in OI	Curr. IV	Prev. IV	LTP	Net Chg
10600	32,55,150	-33300	16.8	16.3	22.9	-22.5
10500	34,81,500	12450	18.3	17.3	34.5	-34.0
10600	41,18,475	845175	16.8	16.3	54.3	-47.0
10700	17,15,400	921075	15.3	15.6	87.6	-62.2
10800	18,93,525	107100	14.0	14.8	140	-77.8
10900	1,24,725	17625	13.2	14.3	209	-84.4
11000	2,36,250	33150	12.8	14.6	294	-87.5
11100	1,55,250	-33450	12.2	14.7	386	-87.1
11200	54,900	-4725	11.4	15.1	480	-109.4
11300	6,78,225	-223650	13.4	18.7	582	-92.8

Nifty Options Data is for the expiry 27-Dec-18

### OPEN INTEREST – NIFTY CALL & NIFTY PUT

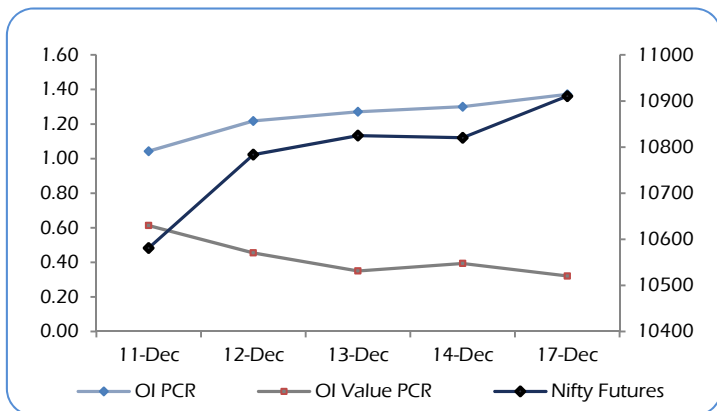


Among Nifty calls, 11000 SP from the December month expiry was the most active call with a contraction of 0.60 million open interests.

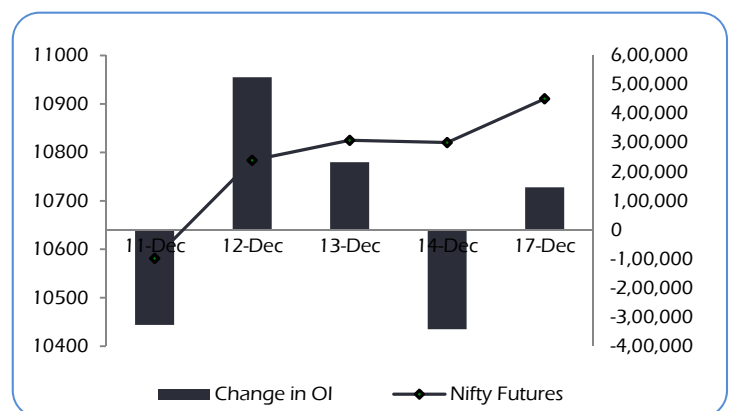
Among Nifty puts, 10,900 SP from the December month expiry was the most active put with an addition of 0.92 million open interests.

The maximum OI outstanding for Calls was at 11,000 SP (4.44mn) and that for Puts was at 10,000 SP (5.02mn).

### OI PCR, OI Value PCR vs NIFTY FUTURES



### Change in OPEN INTEREST (Total) vs NIFTY FUTURES



## NIFTY OPTIONS

### Nifty Bullish Call Spread

Action	Strike	Premium	Max Profit	Max Loss
Buy	10900	98.5	54.25	45.75
Sell	11000	52.8		
Buy	11000	52.8	71.95	28.05
Sell	11100	24.7		
Buy	10900	98.5	126.20	73.80
Sell	11100	24.7		

### Nifty Bearish Put Spread

Action	Strike	Premium	Max Profit	Max Loss
Buy	11000	140	47.25	52.75
Sell	10900	88		
Buy	10900	88	66.70	33.30
Sell	10800	54		
Buy	11000	140	113.95	86.05
Sell	10800	54		

Note: Above spread are provided for information purposes.

## STOCK OPTIONS

### Most Active Calls

Scrip	Strike Price	Price	Spot	Turnover (Rs Crs.)	Expiry
RELIANCE	1140	16.95	1130	632	27-Dec-18
TATAMOTORS	180	2.50	174	286	27-Dec-18
MARUTI	8000	35.00	7734	530	27-Dec-18
RELIANCE	1160	10.00	1130	452	27-Dec-18
RELIANCE	1120	27.00	1130	416	27-Dec-18

### Most Active Puts

Scrip	Strike Price	Price	Spot	Turnover (Rs Crs.)	Expiry
RELIANCE	1100	7.45	1130	421	27-Dec-18
KOTAKBANK	1200	21.50	1222	513	27-Dec-18
RELIANCE	1080	4.20	1130	259	27-Dec-18
RELIANCE	1120	12.80	1130	253	27-Dec-18
TATAMOTORS	170	2.45	174	100	27-Dec-18

## STOCK FUTURES

### LONG BUILDUP (Price rise OI rise)

Stock	CMP	Price Chg	OI Chg	(NSE+BSE) %Delivery	Recovery
BEML	846	8.0%	37.4%	5%	9%
INFIBEAM	49	4.4%	1.6%	16%	4%
TATAMTRDVR	96	4.3%	2.3%	21%	4%
TATAMOTORS	174	4.2%	1.1%	14%	4%
POWERGRID	193	3.7%	5.4%	50%	2%

### SHORT BUILDUP (Price fall OI rise)

Stock	CMP	Price chg	OI chg	(NSE+BSE) %Delivery	Fall from High
BIOCON	634	-2.2%	1.1%	23%	3%
CASTROLIND	146	-2.0%	7.6%	51%	4%
VOLTAS	568	-1.9%	10.6%	21%	4%
DCBBANK	159	-1.9%	2.8%	29%	3%
TATAPOWER	78	-1.8%	0.5%	40%	4%

### SHORT UNWINDING (Price rise OI fall)

Stock	CMP	Price Chg	OI Chg	(NSE+BSE) %Delivery	Recovery
JINDALSTEL	164	3.8%	-1.2%	20%	4%
UBL	1303	3.6%	-2.3%	29%	3%
IGL	262	3.5%	-2.8%	34%	3%
MFSL	447	3.5%	-1.0%	40%	4%
ICICIPRULI	321	3.4%	-3.4%	35%	3%

### LONG UNWINDING (Price fall OI fall)

Stock	CMP	Price chg	OI chg	(NSE+BSE) %Delivery	Fall from High
APOLLOHOSP	1217	-2.5%	-1.2%	29%	3%
INFY	694	-1.7%	-0.1%	49%	3%
BHARTIARTL	315	-1.3%	-0.6%	10%	3%
VGUARD	214	-1.2%	-6.2%	22%	2%
INDIANB	237	-1.2%	-4.7%	15%	2%

Long positions were witnessed in stocks like BEML & INFIBEAM

Short positions were witnessed in stocks like BIOCON & CASTROLIND

FII's ACTIVITY IN DERIVATIVES								NSE DERIVATIVES TURNOVER				
17-Dec-18	Buy	Sell	Net	OI	%	OI	%	Rs. Crs	17-Dec	14-Dec	%	FII's
Rs. Crs				Value	Chg	Contracts	Chg				Chg	Contribution
INDEX FUTURES	1,759	2,078	-319	28,116	3.1%	3,62,406	2.6%	INDEX FUTURES	13,308	14,380	-7%	29%
INDEX OPTIONS	55,743	55,722	21	65,520	2.4%	8,77,551	1.7%	INDEX OPTIONS	4,32,535	3,80,772	14%	26%
<b>TOTAL INDEX</b>	<b>57,502</b>	<b>57,800</b>	<b>- 298</b>					<b>TOTAL INDEX</b>	<b>4,45,843</b>	<b>3,95,152</b>	<b>13%</b>	
STOCK FUTURES	10,240	10,233	6	86,348	0.6%	14,75,590	-0.3%	STOCK FUTURES	39,332	45,289	-13%	52%
STOCK OPTIONS	6,195	6,150	46	8,816	2.8%	1,56,546	2.2%	STOCK OPTIONS	39,585	40,138	-1%	31%
<b>TOTAL STOCKS</b>	<b>16,435</b>	<b>16,383</b>	<b>52</b>					<b>TOTAL STOCKS</b>	<b>78,916</b>	<b>85,427</b>	<b>-8%</b>	
<b>FII's contribution to the total Derivatives turnover</b>									<b>28%</b>	<b>33%</b>		

#### DISCLAIMERS AND DISCLOSURES

LKP Sec. Ltd. (CIN-L67120MH1994PLC080039, www.lkpsec.com) and its affiliates are a full-fledged, brokerage and financing group. LKP was established in 1992 and is one of India's leading brokerage and distribution house. LKP is a corporate trading member of Bombay Stock Exchange Limited (BSE), National Stock Exchange of India Limited (NSE), MCX Stock Exchange Limited (MCX-SX). LKP along with its subsidiaries offers the most comprehensive avenues for investments and is engaged in the businesses including stock broking (Institutional and retail), merchant banking, commodity broking, depository participant, insurance broking and services rendered in connection with distribution of primary market issues and financial products like mutual funds etc.

LKP hereby declares that it has not defaulted with any stock exchange nor its activities were suspended by any stock exchange with whom it is registered in last five years. However, SEBI and Stock Exchanges have conducted the routine inspection and based on their observations have issued advice letters or levied minor penalty on LKP for certain operational deviations in ordinary/routine course of business. LKP has not been debarred from doing business by any Stock Exchange / SEBI or any other authorities; nor has its certificate of registration been cancelled by SEBI at any point of time.

LKP offers research services to clients. The analyst for this report certifies that all of the views expressed in this report accurately reflect his or her personal views about the subject company or companies and its or their securities, and no part of his or her compensation was, is or will be, directly or indirectly related to specific recommendations or views expressed in this report.

Other disclosures by LKP and its Research Analyst under SEBI (Research Analyst) Regulations, 2014 with reference to the subject company(s) covered in this report:-

Research Analyst or his/her relative's financial interest in the subject company: (NO)

LKP or its associates may have financial interest in the subject company.

LKP or its associates and Research Analyst or his/her relative's does not have any material conflict of interest in the subject company. The research Analyst or research entity (LKP) has not been engaged in market making activity for the subject company.

LKP or its associates may have actual/beneficial ownership of 1% or more securities of the subject company at the end of the month immediately preceding the date of publication of Research Report.

Research Analyst or his/her relatives have actual/beneficial ownership of 1% or more securities of the subject company at the end of the month immediately preceding the date of publication of Research Report: (NO)

LKP or its associates may have received any compensation including for investment banking or merchant banking or brokerage services from the subject company in the past 12 months.

LKP or its associates may have received compensation for products or services other than investment banking or merchant banking or brokerage services from the subject company in the past 12 months.

LKP or its associates may have received any compensation or other benefits from the Subject Company or third party in connection with the research report.

Subject Company may have been client of LKP or its associates during twelve months preceding the date of distribution of the research report and LKP may have co-managed public offering of securities for the subject company in the past twelve months.

Research Analyst has served as officer, director or employee of the subject company: (NO)

LKP and/or its affiliates may seek investment banking or other business from the company or companies that are the subject of this material. Our salespeople, traders, and other professionals may provide oral or written market commentary or trading strategies to our clients that reflect opinions that are contrary to the opinions expressed herein, and our proprietary trading and investing businesses may make investment decisions that may be inconsistent with the recommendations expressed herein.

In reviewing these materials, you should be aware that any or all of the foregoing, among other things, may give rise to real or potential conflicts of interest including but not limited to those stated herein. Additionally, other important information regarding our relationships with the company or companies that are the subject of this material is provided herein. This report is not directed to, or intended for distribution to or use by, any person or entity who is a citizen or resident of or located in any locality, state, country or other jurisdiction where such distribution, publication, availability or use would be contrary to law or regulation or which would subject LKP or its group companies to any registration or licensing requirement within such jurisdiction. Specifically, this document does not constitute an offer to or solicitation to any U.S. person for the purchase or sale of any financial instrument or as an official confirmation of any transaction to any U.S. person.

Unless otherwise stated, this message should not be construed as official confirmation of any transaction. No part of this document may be distributed in Canada or used by private customers in United Kingdom.

All trademarks, service marks and logos used in this report are trademarks or registered trademarks of LKP or its Group Companies. The information contained herein is not intended for publication or distribution or circulation in any manner whatsoever and any unauthorized reading, dissemination, distribution or copying of this communication is prohibited unless otherwise expressly authorized. Please ensure that you have read "Risk Disclosure Document for Capital Market and Derivatives Segments" as prescribed by Securities and Exchange Board of India before investing in Indian Securities Market. In so far as this report includes current or historic information, it is believed to be reliable, although its accuracy and completeness cannot be guaranteed.

All material presented in this report, unless specifically indicated otherwise, is under copyright to LKP. None of the material, nor its content, nor any copy of it, may be altered in any way, transmitted to, copied or distributed to any other party, without the prior express written permission of LKP