

MARKET LENS

NIFTY	12089
Support	11985
	11900
Resistance	12200
	12300

IN FOCUS

Stock in Focus	KALPATARU POWER
Intraday Pick	BALKRISIND
Intraday Pick	GAIL
Intraday Pick	JSWSTEEL

June 04, 2019



STOCK IN FOCUS

- ▶ **KPTL** is a diversified EPC player involved in execution of power transmission and pipeline projects. It also undertakes buildings, roads and power plant construction projects through its subsidiary JMC Projects. KPP's standalone order book rose by 13% YoY to Rs141bn as of FY19-end, order inflows declined by 11% YoY to Rs83.4bn with L1 stood at in the excess of Rs15bn.
- ▶ Looking ahead, the Company expects revenue to grow by 15-20% in FY20 led by strong growth in Railway and Oil & Gas pipeline segment, while core T&D is expected to grow by 10-12%.
- ▶ The domestic T&D ordering activity from PGCIL is slowing; this is likely to be offset by opportunity from green energy corridor in the near-term. T&D order inflows will be driven by international markets (mainly Africa and SAARC). In non-T&D segments - Railways and Oil & Gas pipelines – The Company is actively looking for overseas opportunities.
- ▶ With healthy cash-flow, it reduced its net debt to Rs5.1bn in FY19 from Rs7bn in FY18. The Management is looking forward to divest its BOT assets to unlock value, which could further reduce its debt, and it may look for further acquisition in international market. With healthy growth outlook and value-unlocking of subsidiaries, **we maintain our BUY recommendation on the stock with an SoTP-based Target Price of Rs591.**

Intraday Picks

**BALKRISIND (PREVIOUS CLOSE: 785) BUY**

For today's trade, long position can be initiated in the range of Rs 770-780 for the target of Rs.805 with a strict stop loss of Rs 760.

**GAIL (PREVIOUS CLOSE: 358) SELL**

For today's trade, short position can be initiated in the range of Rs 360-363 for the target of Rs.350 with a strict stop loss of Rs 366.

**JSWSTEEL (PREVIOUS CLOSE: 275) BUY**

For today's trade, long position can be initiated in the range of Rs 270-273 for the target of Rs.284 with a strict stop loss of Rs 267.

EQUITY INDICES

Indices	Absolute Change		Percentage Change		
	Last Trade	Change	1-D	1-Mth	YTD
<b>Domestic</b>					
BSE Sensex	40,267.6	553.4	1.4%	3.3%	11.6%
CNX Nifty	12,088.6	165.8	1.4%	3.2%	11.3%
S&P CNX 500	9,922.6	117.6	1.2%	3.1%	8.2%
SENSEX 50	12,588.8	172.5	1.4%	3.3%	10.7%
<b>International</b>					
DJIA	24,819.8	4.7	0.0%	-6.4%	6.4%
NASDAQ	7,333.0	(120.1)	-1.6%	-10.2%	10.5%
NIKKEI	20,340.5	(70.4)	-0.3%	-8.6%	1.6%
HANGSENG	26,858.2	(35.7)	-0.1%	-10.7%	3.9%
MSCI Emerging Mkts	1,008.3	10.3	1.0%	-6.9%	4.4%

ADRs / GDRs

	Last Trade	Change	1-D	1-Mth	YTD
Dr. Reddy's Lab (ADR)	39.7	1.6	4.1%	-6.0%	5.2%
Tata Motors (ADR)	12.7	0.2	1.4%	-16.2%	4.1%
Infosys (ADR)	10.5	(0.0)	-0.2%	1.2%	10.4%
ICICI Bank (ADR)	12.0	(0.1)	-0.4%	4.5%	16.1%
HDFC Bank (ADR)	126.0	1.9	1.5%	5.1%	21.7%
Axis Bank (GDR)	58.3	0.3	0.5%	6.4%	30.0%
Reliance Ind (GDR)	39.7	1.1	2.9%	-3.3%	24.5%

COMMODITY MARKET

Key Commodities	Last Trade	Change	1-D	1-Mth	YTD
Brent Crude (\$/bl)	61.2	(0.0)	-0.1%	-13.6%	13.8%
Silver (\$/Oz)	14.8	(0.0)	-0.2%	-1.1%	-4.7%
Gold (\$/Oz)	1,325.1	(0.2)	0.0%	3.4%	3.3%
Copper LME (\$/MT)	5,816.0	10.0	0.2%	-6.6%	-2.2%
Aluminium LME (\$/MT)	1,753.8	(19.3)	-1.1%	-0.9%	-5.9%
Baltic Dry	1,096.0	(1.0)	-0.1%	11.3%	-13.8%

CURRENCY RATES

	Last Trade	Change	1-D	1-Mth	YTD
USD/INR	69.3	69.7	-0.6%	0.1%	-0.7%
EUR/INR	77.5	77.7	-0.3%	0.4%	-3.1%

RATES

	Last Trade	Change	1-D	1-Mth	YTD
T-Bill - 91 D	6.0	6.1	-1.6%	-6.4%	-10.7%
10 Year G-sec Yield	7.0	7.0	-0.7%	-5.6%	-5.3%

INVESTMENT ACTIVITY (RS. CR)

Category	BUY	SELL	NET	Prev
FI	7,752.6	4,683.7	3,068.9	676..2
DII	2,587.6	3,050.3	(462.7)	394.1

EXCHANGE TURNOVER

Exchange	Rs Crore
BSE Equity	3,992.6
BSE Derivatives	0.16
NSE Equity	33,472.5
NSE Derivatives	17,16,927.3

Institutional Equity Research

MARKET LENS

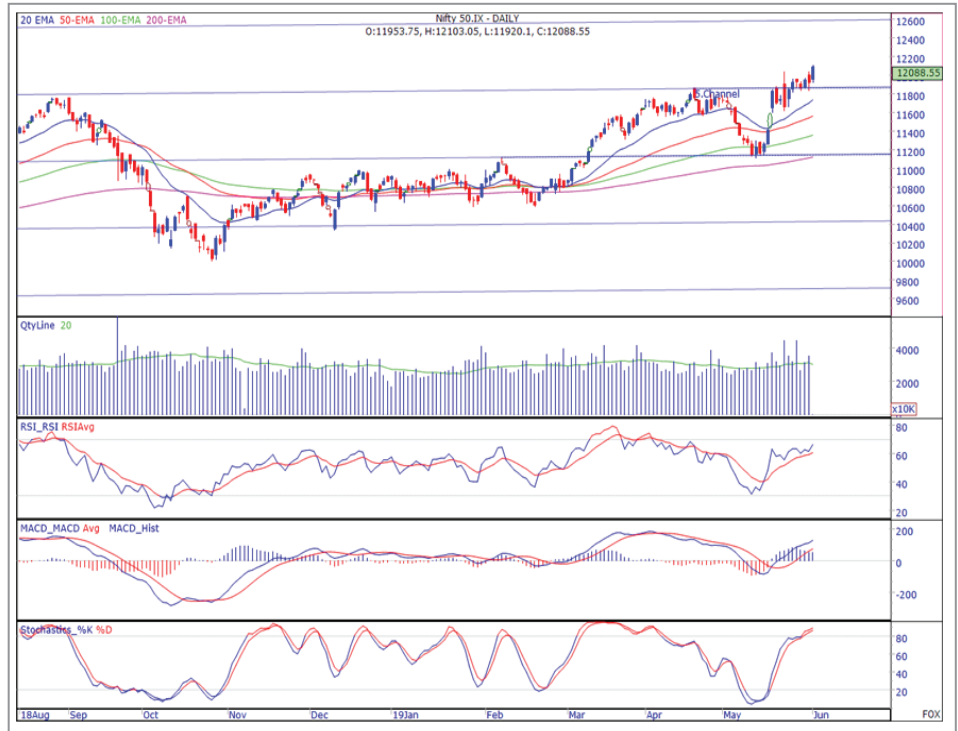
NIFTY	12089	IN FOCUS	
Support	11985	Stock in Focus	KALPATARU POWER
	11900	Intraday Pick	BALKRISIND
Resistance	12200	Intraday Pick	GAIL
	12300	Intraday Pick	JSWSTEEL

June 04, 2019

Technical Research

MARKET SYNOPSIS

- ▶ On Monday, NSE-NIFTY witnessed stable start and later advanced gradually the way session progressed. On the higher side, NIFTY faced hurdle around its R2 (then placed at 12,100 level) and remained sideways. Finally, index closed the day at 12,089 mark, with the gain of 166 points.
- ▶ NSE Cash segment reported turnover of Rs33,473 crore as compared to Rs42,197 crore reported earlier.
- ▶ Overall market breadth turned from negative to neutral, as 866 stocks advanced against 892 declined stocks.
- ▶ Positive trend was observed across all the sector indices during the day barring Media index (declined by 0.3%). Metal and Auto indices emerged as top gainers with the increase of 1.8% and 1.9%, respectively. However other sector indices have reported gain between 0.6% and 1.4%.



NSE-NIFTY OUTLOOK

- ▶ Indian bourses begun week on a strong note as NSE-NIFTY invalidated prior bearish formations (Dark Cloud Cover and Double Top) with a decisive up-move. As mentioned earlier, our bullish stance will remain intact on NIFTY as its key moving averages are sloping upwards and its major technical indicators are also positively poised above their respective averages. As per the multiple channel breakouts, now the index will face major hurdle around the upper ban of the channel, which is placed at 12,600 mark. In case of any decline, NIFTY will continue to find strong support around its make-or-break level-11,840.
- ▶ As for the day, support is placed at around 11,985 and then at 11,900 levels, while resistance is observed at 12,200 and then at 12,300 levels.

Institutional Equity Research

## MARKET LENS

NIFTY 12089 IN FOCUS

June 04, 2019

Support	11985	Stock in Focus	KALPATARU POWER
	11900	Intraday Pick	BALKRISIND
Resistance	12200	Intraday Pick	GAIL
	12300	Intraday Pick	JSWSTEEL

### Derivatives Snapshot

- ▶ Nifty opened higher on back of sharp slide in crude prices and continued its positive momentum to close at all time high for the day. Nifty closed up by 166 points at 12,089 levels. Among the nifty stocks 44 advanced and 6 declined during the day.
- ▶ Among sectors except for Media to end by 0.3% lower high beta sectors like Auto, FMCG and Metals to gain by 1.8%, 1.4% and 1.7% respectively for the day.
- ▶ Broader market indices remained positive with NIFTY 100,200 and 500 to close up by 1.3% average while midcap indices and small cap indices gained by 0.9% and 0.2% respectively.
- ▶ Nifty Jun futures ends with 24 points premium at 12,113 mark, while on other hand, Bank Nifty Jun futures ended with the premium of 35 points at 30,478 mark.
- ▶ Nifty has closed at all time high and the credit policy in the middle of the week will be important to watch for the next leg of move from current levels. The trend reversal levels will be 11,800 below which one can expect sharp profit booking.

**Sectoral Activity:** Amongst sectoral index, Auto and Metals remained in focus with positive momentum.

**Stock Activity:** VEDL and Maruti have witnessed long buildup in today's trade.

#### TOP 5 PRICE GAINERS

Stock Name	LTP	% Price Chg	% Vol Chg	%OI Chg	Support	Pivot	Resistance
APOLLO HOSPITALS ENTER. L	1357.30	9.57%	185.76%	63.69%	1277	1323	1403
PAGE INDUSTRIES LTD	21102.00	6.81%	95.82%	-15.40%	20104	20652	21650
HERO MOTOCORP LIMITED	2840.25	5.97%	179.58%	-11.15%	2748	2804	2896
TVS MOTOR COMPANY LTD	499.90	4.30%	282.05%	-26.75%	482	492	510
BHARAT FIN INCLUSION LTD	1042.45	4.16%	71.83%	-22.60%	1007	1026	1061

#### TOP 5 PRICE LOSERS

Stock Name	LTP	% Price Chg	% Vol Chg	%OI Chg	Support	Pivot	Resistance
RELIANCE INFRASTRUCTU LTD	98.95	-4.86%	-7.84%	-2.56%	97	100	102
JET AIRWAYS (INDIA) LTD.	141.10	-3.49%	-31.33%	-35.60%	138	143	146
V-GUARD IND LTD.	235.00	-3.11%	-65.31%	17.84%	232	237	240
PC JEWELLER LTD	75.00	-2.72%	-61.67%	-23.47%	74	75	77
IFCI LTD	9.60	-2.54%	-48.46%	-41.08%	9	10	10

#### TOP 5 OI GAINERS

Stock Name	LTP	% Price Chg	% Vol Chg	%OI Chg	Support	Pivot	Resistance
BERGER PAINTS (I) LTD	327.55	-0.83%	-74.40%	73.88%	325	329	331
APOLLO HOSPITALS ENTER. L	1357.30	9.57%	185.76%	63.69%	1277	1323	1403
NCC LIMITED	99.00	1.28%	-50.35%	19.98%	95	98	102
UJJIVAN FIN. SERVC. LTD.	362.45	0.00%	-42.69%	19.61%	358	363	368
V-GUARD IND LTD.	235.00	-3.11%	-65.31%	17.84%	232	237	240

#### TOP 5 OI LOSERS

Stock Name	LTP	% Price Chg	% Vol Chg	%OI Chg	Support	Pivot	Resistance
MINDTREE LIMITED	981.25	0.34%	-20.51%	-52.23%	975	980	986
MRPL	63.30	0.00%	-23.04%	-48.08%	63	64	64
TATA GLOBAL BEVERAGES LTD	244.95	0.39%	-50.07%	-45.27%	242	245	247
CG POWER AND IND SOL LTD	35.80	0.99%	-21.89%	-44.55%	35	35	36
BATA INDIA LTD	1362.80	2.86%	106.42%	-43.74%	1330	1350	1383

Institutional Equity Research

## MARKET LENS

NIFTY 12089 IN FOCUS

June 04, 2019

Support	11985	Stock in Focus	KALPATARU POWER
	11900	Intraday Pick	BALKRISIND
Resistance	12200	Intraday Pick	GAIL
	12300	Intraday Pick	JSWSTEEL

## Derivatives Snapshot

### TOP 5 "RISE IN % DEL CHG"

Stock Name	LTP	% Price Chg	% Vol Chg	%Del Chg	Support	Pivot	Resistance
TORRENT POWER LTD	247.30	0.55%	200.21%	270.23%	244	247	250
TVS MOTOR COMPANY LTD	499.90	4.30%	282.05%	240.29%	482	492	510
MINDTREE LIMITED	981.25	0.34%	-20.51%	221.19%	975	980	986
BAJAJ AUTO LIMITED	3034.60	3.72%	245.52%	210.40%	2933	3006	3107
HERO MOTOCORP LIMITED	2840.25	5.97%	179.58%	172.43%	2748	2804	2896

### TOP 5 "DECLINE IN % DEL CHG"

Stock Name	LTP	% Price Chg	% Vol Chg	%Del Chg	Support	Pivot	Resistance
CUMMINS INDIA LTD	772.40	-2.23%	-70.95%	-85.03%	762	778	789
TATA COMMUNICATIONS LTD	540.50	-0.09%	-46.55%	-83.87%	534	539	545
INFIBEAM AVENUES LIMITED	46.25	0.11%	-77.68%	-82.53%	45	46	47
VEDANTA LIMITED	164.20	2.27%	-54.17%	-80.54%	161	163	166
SRF LTD	2858.65	0.41%	27.56%	-78.71%	2799	2833	2893

## SECTORAL ACTIVITY

	Value Total OI	Average of OI Change %	Average of Price Change %	Total Volume	Average of Volume Change %
Consumer Discretionary	617316985	-15.5%	0.9%	161255873	8.8%
Consumer Staples	177323400	-16.4%	1.4%	37771002	-7.3%
Energy	274098943	-21.1%	0.8%	82302625	-10.1%
Financials	1246849119	-17.9%	0.9%	251295226	-30.3%
Health Care	143878864	-16.9%	1.4%	24354925	10.7%
Industrials	182243447	-18.2%	1.1%	43100855	-28.1%
Information Technology	122038550	-18.0%	1.0%	34499417	-24.7%
Materials	821819313	-12.8%	1.1%	152293449	-26.6%
Telecommunication Services	523959948	-24.2%	0.3%	62847818	-34.4%
Utilities	701349300	-23.1%	-0.4%	151305291	-5.8%
<b>Grand Total</b>	<b>4810877869</b>	<b>-17.3%</b>	<b>0.9%</b>	<b>1001026481</b>	<b>-13.0%</b>

Institutional Equity Research

## MARKET LENS

NIFTY 12089 IN FOCUS

June 04, 2019

Support	11985	Stock in Focus	KALPATARU POWER
	11900	Intraday Pick	BALKRISIND
Resistance	12200	Intraday Pick	GAIL
	12300	Intraday Pick	JSWSTEEL

### Pivot Table

Name	LTP	Support 2	Support 1	Pivot	Resistance 1	Resistance 2
Nifty 50	12089	11854	11971	12037	12154	12220
Nifty Bank	31654	31148	31401	31538	31791	31928
Nifty IT	16361	15970	16165	16278	16473	16586
ADANI PORT & SEZ LTD	425	407	416	421	430	435
ASIAN PAINTS LIMITED	1459	1416	1438	1451	1473	1486
AXIS BANK LIMITED	813	799	806	810	817	822
BAJAJ AUTO LIMITED	3035	2832	2933	3006	3107	3179
BAJAJ FINSERV LTD.	8348	8131	8240	8302	8411	8473
BAJAJ FINANCE LIMITED	3511	3430	3471	3500	3541	3570
BHARTI AIRTEL LIMITED	353	346	349	352	356	359
BHARAT PETROLEUM CORP LT	417	407	412	416	421	425
BRITANNIA INDUSTRIES LTD	2970	2905	2937	2969	3002	3033
CIPLA LTD	568	546	557	563	574	580
COAL INDIA LTD	261	250	255	259	264	267
DR. REDDY'S LABORATORIES	2724	2619	2671	2705	2758	2792
EICHER MOTORS LTD	19948	19349	19649	19859	20159	20369
GAIL (INDIA) LTD	357	351	354	360	363	369
GRASIM INDUSTRIES LTD	895	880	888	892	900	904
HCL TECHNOLOGIES LTD	1115	1075	1095	1107	1127	1139
HDFC LTD	2230	2177	2204	2219	2246	2262
HDFC BANK LTD	2457	2412	2435	2447	2470	2482
HERO MOTOCORP LIMITED	2840	2657	2748	2804	2896	2951
HINDALCO INDUSTRIES LTD	199	192	196	198	202	204
HINDUSTAN UNILEVER LTD.	1840	1773	1806	1826	1859	1879
INDIABULLS HSG FIN LTD	811	760	786	802	827	843
ICICI BANK LTD.	423	416	420	423	426	430
INDUSIND BANK LIMITED	1663	1562	1613	1640	1690	1717
BHARTI INFRA TEL LTD.	269	262	265	271	274	279
INFOSYS LIMITED	745	720	732	742	754	763
INDIAN OIL CORP LTD	170	165	168	169	171	173
ITC LTD	279	272	275	278	282	285
JSW STEEL LIMITED	275	266	270	273	277	280
KOTAK MAHINDRA BANK LTD	1531	1495	1513	1524	1542	1553
LARSEN & TOUBRO LTD.	1559	1535	1547	1559	1571	1582
MAHINDRA & MAHINDRA LTD	653	625	639	649	663	673
MARUTI SUZUKI INDIA LTD.	7023	6651	6837	6946	7132	7241
NTPC LTD	133	131	132	134	134	136
OIL AND NATURAL GAS CORP.	172	165	169	171	174	177
POWER GRID CORP. LTD.	193	189	191	192	194	196
RELIANCE INDUSTRIES LTD	1360	1304	1332	1350	1378	1396
STATE BANK OF INDIA	355	347	351	354	358	361
SUN PHARMACEUTICAL IND L	417	403	410	414	421	425
TATA MOTORS LIMITED	175	166	170	173	177	179
TATA STEEL LIMITED	498	478	488	495	505	512
TATA CONSULTANCY SERV LT	2242	2163	2203	2225	2265	2287
TECH MAHINDRA LIMITED	758	742	750	757	765	772
TITAN COMPANY LIMITED	1266	1213	1240	1254	1281	1296
ULTRATECH CEMENT LIMITED	4762	4699	4731	4762	4793	4824
UPL LIMITED	1007	987	997	1004	1014	1021
VEDANTA LIMITED	164	157	161	163	166	169
WIPRO LTD	291	285	288	290	293	295
YES BANK LIMITED	149	143	146	148	151	153
ZEE ENTERTAINMENT ENT LTD	360	347	353	360	366	372

Institutional Equity Research

NIFTY 12089 IN FOCUS

June 04, 2019

## MARKET LENS

Support	11985	Stock in Focus	KALPATARU POWER
	11900	Intraday Pick	BALKRISIND
Resistance	12200	Intraday Pick	GAIL
	12300	Intraday Pick	JSWSTEEL

### Simple Moving Average

Scrip Name	Close Rate	20-SMA	50-SMA	100-SMA	200-SMA	HIGH_52WEEK	LOW_52WEEK
NIFTY	12,089	11,604	11,615	11,260	11,073	12,103	10,005
BANK NIFTY	31,654	30,147	30,018	28,709	27,578	31,784	24,240
SENSEX 50	12,589	12,079	12,092	11,738	11,563	12,600	10,472
ACC	1,725	1,644	1,636	1,539	1,522	1,769	1,256
ADANI PORTS	425	<b>389</b>	385	370	363	431	292
AMBUJACEM	237	223	226	220	219	245	188
ASIANPAINT	1,459	<b>1,362</b>	1,422	1,416	1,365	1,530	1,118
AUROPHARMA	657	<b>699</b>	751	753	748	838	527
AXISBANK	813	<b>768</b>	763	731	671	822	499
BAJAJ-AUTO	3,035	2,990	2,981	2,884	2,791	3,195	2,420
BANKBARODA	132	<b>123</b>	124	118	118	158	91
BHARTIARTL	353	335	325	308	306	366	254
BHEL	72	<b>66</b>	70	68	70	83	56
BOSCHLTD	17,405	17,176	17,700	18,237	18,823	22,400	16,630
BPCL	417	<b>384</b>	376	363	349	429	239
CIPLA	568	560	550	539	566	678	484
COALINDIA	261	244	243	235	251	300	211
DRREDDY	2,724	<b>2,739</b>	2,780	2,714	2,615	2,964	1,873
EICHERMOT	19,948	<b>20,356</b>	20,620	20,639	22,660	30,274	18,205
GAIL	357	343	347	341	351	399	295
GRASIM	895	874	864	820	867	1,093	689
HCLTECH	1,115	1,084	1,092	1,053	1,034	1,188	880
HDFC	2,230	<b>2,061</b>	2,020	1,976	1,921	2,235	1,645
HDFCBANK	2,457	2,363	2,321	2,221	2,128	2,465	1,885
HEROMOTOCO	2,840	<b>2,645</b>	2,620	2,699	2,877	3,712	2,475
HINDALCO	199	197	203	202	216	260	182
HINDUNILVR	1,840	1,742	1,719	1,740	1,717	1,870	1,477
ICICIBANK	423	403	399	381	360	439	257
IDEA	14	13	16	18	21	40	12
INDUSINDBK	1,663	<b>1,513</b>	1,635	1,579	1,626	2,038	1,333
INFRATEL	269	<b>270</b>	291	295	281	335	242
INFY	745	721	732	730	706	773	597
ITC	279	<b>294</b>	298	290	290	323	259
KOTAKBANK	1,531	1,464	1,399	1,329	1,266	1,556	1,002
LT	1,559	<b>1,445</b>	1,400	1,356	1,348	1,607	1,183
LUPIN	745	<b>778</b>	794	806	838	986	720
M&M	653	640	656	668	747	993	597
MARUTI	7,023	6,803	6,885	6,965	7,378	9,929	6,318
NTPC	133	129	133	126	128	146	107
ONGC	172	171	164	155	157	185	128
POWERGRID	193	186	192	190	190	207	173
RELIANCE	1,360	1,304	1,340	1,285	1,221	1,418	931
SBIN	355	<b>332</b>	320	302	293	364	247
SUNPHARMA	417	<b>419</b>	447	441	498	679	345
TATAMOTORS	175	<b>180</b>	194	185	196	316	129
TATAPOWER	68	66	69	70	72	86	60
TATASTEEL	498	488	516	501	532	648	441
TCS	2,242	2,120	2,099	2,035	2,011	2,276	1,711
TECHM	758	<b>772</b>	786	777	744	847	612
ULTRACEMCO	4,762	4,611	4,357	4,039	4,005	4,905	3,260
WIPRO	291	287	279	274	256	299	190
YESBANK	149	<b>150</b>	208	208	226	404	132
ZEEL	360	357	394	413	440	575	288

Institutional Equity Research

## MARKET LENS

NIFTY 12089 IN FOCUS

June 04, 2019

Support	11985	Stock in Focus	KALPATARU POWER
	11900	Intraday Pick	BALKRISIND
Resistance	12200	Intraday Pick	GAIL
	12300	Intraday Pick	JSWSTEEL

### Bulk Deals Snapshot

Deal Date	Scrip Code	Company	Client Name	Deal Type*	Quantity	Price
03-06-2019	511463	ALEXANDER	KAHAR NIKLESH KANAIYABHAI	B	22,900	15.13
03-06-2019	511463	ALEXANDER	VANDNA ANIRUDH SETHI	B	1,25,500	14.69
03-06-2019	511463	ALEXANDER	KAHAR NIKLESH KANAIYABHAI	S	1,31,330	14.65
03-06-2019	530723	ASITCFIN	KETAN JAYANTILAL KARANI	B	2,35,507	16.65
03-06-2019	530723	ASITCFIN	TRUPTI KETAN KARANI	S	2,35,506	16.65
03-06-2019	537766	BCP	ACHINTYA SECURITIES PVT. LTD.	B	22,61,053	44.78
03-06-2019	537766	BCP	ACHINTYA SECURITIES PVT. LTD.	S	22,38,794	44.15
03-06-2019	537766	BCP	NIRAJ RAJNIKANT SHAH	B	4,95,000	44
03-06-2019	537766	BCP	NIRAJ RAJNIKANT SHAH	S	2,90,000	44.3
03-06-2019	537766	BCP	HARSHIT PROMOTERS PRIVATE LTD	S	5,50,000	45.37
03-06-2019	533228	BHARATFIN	GOLDMAN SACHS SINGAPORE PTE	B	8,32,107	1,004.00
03-06-2019	533228	BHARATFIN	EUROPACIFIC GROWTH FUND	S	8,31,869	1,004.00
03-06-2019	539770	DARJEELING	AROHI PRATYUSH SHAH	S	34,460	88.47
03-06-2019	540266	GLCL	SANJEEV BURMAN JHAVERI	B	37,000	6.7
03-06-2019	539225	JYAECO	MONEY GROW INVESTMENT	B	1,84,393	72.88
03-06-2019	539225	JYAECO	MONEY GROW INVESTMENT	S	1,71,033	72.91
03-06-2019	500520	M&M	M M BENEFIT TRUST	S	1,92,00,000	648
03-06-2019	500520	M&M	CAISSE DE DEPOT ET PLACEMENT DU QUEBEC	B	2,19,84,000	648
03-06-2019	541974	MANORAMA	ARCADIA SHARE & STOCK BROKERS PVT. LTD	S	62,400	201
03-06-2019	540243	NEWLIGHT	SAINT GLOBAL MARKETS LLP	B	35,521	35.11
03-06-2019	540243	NEWLIGHT	AJAY DOGRA	S	20,000	35
03-06-2019	540243	NEWLIGHT	ABHAY DINESH GUPTA	B	12,500	34.75
03-06-2019	540243	NEWLIGHT	ABHAY DINESH GUPTA	S	12,500	34.7
03-06-2019	540243	NEWLIGHT	JAY BHAVSAR	B	12,500	34.7
03-06-2019	540243	NEWLIGHT	KHUSHBU ARJUNBHAI PADHIYAR	B	12,500	34.9
03-06-2019	540243	NEWLIGHT	JAY BHAVSAR	S	12,500	34.85
03-06-2019	540243	NEWLIGHT	KHUSHBU ARJUNBHAI PADHIYAR	S	12,500	34.75
03-06-2019	540243	NEWLIGHT	MAHESHKUMAR JAYANTILAL CHAUHAN	B	12,500	34.85
03-06-2019	540243	NEWLIGHT	MAHESHKUMAR JAYANTILAL CHAUHAN	S	12,500	34.9
03-06-2019	542628	NSL	DIMPLE VIPUL PATEL .	B	2,22,000	34.05
03-06-2019	542628	NSL	HITESH MOHANBHAI PATEL	S	96,000	33.97
03-06-2019	542628	NSL	BHAVNA HITESH PATEL	S	1,71,000	34
03-06-2019	540198	OSIAJEE	PRAFULLATA KISHORE GADKARI	B	27,500	21.85
03-06-2019	540198	OSIAJEE	ARYADEEP INFRAHOMES PRIVATE LIMITED	S	76,000	21.8
03-06-2019	540198	OSIAJEE	SIBSAGAR TRADE AND AGENCIES PVT LTD	S	28,000	21.96
03-06-2019	536659	PVVINFRA	DHATRI JONNA	B	40,000	27.4
03-06-2019	536659	PVVINFRA	SUN DATACOMM PRIVATE LIMITED	S	40,000	27.4
03-06-2019	534708	RCRL	MAHAVEER CHAND JAIN*	S	81,000	12.16
03-06-2019	540175	REGENCY	MITESH KUMAR	B	19,521	26.44
03-06-2019	540175	REGENCY	SATVINDER SINGH	S	21,664	26.46
03-06-2019	540082	RSTL	VIVEK AGARWAL	B	48,000	16.55
03-06-2019	540082	RSTL	JHAVERI TRADING AND INVESTMENT PVT LTD	S	48,000	16.55
03-06-2019	508905	SMIFS	ANTRIKSH VYAPAAR LIMITED	B	50,000	39.6

\*B - Buy, S - Sell, \*\* = Weighted Average Trade Price / Trade Price

Institutional Equity Research

MARKET LENS

NIFTY 12089 IN FOCUS

June 04, 2019

Support	11985	Stock in Focus	KALPATARU POWER
	11900	Intraday Pick	BALKRISIND
Resistance	12200	Intraday Pick	GAIL
	12300	Intraday Pick	JSWSTEEL

Monthly Economic Calendar

Date	Country	Event	Period	Survey	Prior
4-6-19	AU	Retail Sales MoM	Apr	0.002	0.003
4-6-19	AU	RBA Cash Rate Target	04-06-2019	0.0125	0.015
4-6-19	US	Durable Goods Orders	Apr F	--	-0.021
5-6-19	AU	GDP SA QoQ	1Q	0.004	0.002
<b>5-6-19</b>	<b>IN</b>	<b>Nikkei India PMI Services</b>	<b>May</b>	<b>--</b>	<b>51</b>
<b>5-6-19</b>	<b>IN</b>	<b>Nikkei India PMI Composite</b>	<b>May</b>	<b>--</b>	<b>51.7</b>
5-6-19	US	MBA Mortgage Applications	31-05-2019	--	-0.033
<b>5-6-19</b>	<b>IN</b>	<b>BoP Current Account Balance</b>	<b>1Q</b>	<b>-\$7.00b</b>	<b>-\$16.90b</b>
<b>6-6-19</b>	<b>IN</b>	<b>RBI Repurchase Rate</b>	<b>06-06-2019</b>	<b>0.0575</b>	<b>0.06</b>
<b>6-6-19</b>	<b>IN</b>	<b>RBI Reverse Repo Rate</b>	<b>06-Jun</b>	<b>5.50%</b>	<b>5.75%</b>
<b>6-6-19</b>	<b>IN</b>	<b>RBI Cash Reserve Ratio</b>	<b>06-Jun</b>	<b>4.00%</b>	<b>4.00%</b>
<b>6-6-19</b>	<b>IN</b>	<b>RBI June Monetary Policy Decision: TOP Live</b>			
6-6-19	EC	GDP SA QoQ	1Q F	0.004	0.004
6-6-19	EC	GDP SA YoY	1Q F	0.012	0.012
6-6-19	EC	ECB Main Refinancing Rate	06-06-2019	0	0
6-6-19	US	Initial Jobless Claims	01-06-2019	--	215k
7-6-19	US	Change in Nonfarm Payrolls	May	190k	263k
10-6-19	JN	BoP Current Account Balance	Apr P	--	¥2847.9b
10-6-19	JN	GDP SA QoQ	1Q F	--	0.005
10-6-19	JN	GDP Annualized SA QoQ	1Q F	--	0.021
10-6-19	UK	Industrial Production MoM	Apr	--	0.007
11-6-19	UK	Jobless Claims Change	May	--	24.7k
<b>11-6-19</b>	<b>IN</b>	<b>Manpower Survey</b>	<b>3Q</b>	<b>--</b>	<b>13%</b>
12-6-19	JN	PPI YoY	May	--	0.012
12-6-19	JN	Core Machine Orders MoM	Apr	--	0.038
12-6-19	CH	CPI YoY	May	0.025	0.025
12-6-19	US	MBA Mortgage Applications	07-06-2019	--	--
<b>12-6-19</b>	<b>IN</b>	<b>CPI YoY</b>	<b>May</b>	<b>--</b>	<b>2.92%</b>
<b>12-6-19</b>	<b>IN</b>	<b>Industrial Production YoY</b>	<b>Apr</b>	<b>--</b>	<b>-0.10%</b>
12-6-19	US	CPI MoM	May	0.001	0.003
<b>12-6-19</b>	<b>IN</b>	<b>Imports YoY</b>	<b>May</b>	<b>--</b>	<b>4.50%</b>
<b>12-6-19</b>	<b>IN</b>	<b>Trade Balance</b>	<b>May</b>	<b>--</b>	<b>-\$15330.0m</b>
<b>12-6-19</b>	<b>IN</b>	<b>Exports YoY</b>	<b>May</b>	<b>--</b>	<b>0.60%</b>
13-06-19	AU	Employment Change	May	--	28.4k
13-06-19	AU	Unemployment Rate	May	--	0.052
13-06-19	US	Initial Jobless Claims	08-06-2019	--	--
14-06-19	JN	Industrial Production MoM	Apr F	--	0.006
<b>14-06-19</b>	<b>IN</b>	<b>Wholesale Prices YoY</b>	<b>May</b>	<b>--</b>	<b>3.07%</b>
14-06-19	US	Retail Sales Advance MoM	May	0.007	-0.002
14-06-19	US	U. of Mich. Sentiment	Jun P	--	--
18-06-19	EC	CPI YoY	May F	--	--
19-06-19	UK	CPI MoM	May	--	0.006
19-06-19	UK	CPI YoY	May	--	0.021



Institutional Equity Research

MARKET LENS

NIFTY 12089 IN FOCUS

June 04, 2019

Support	11985	Stock in Focus	KALPATARU POWER
	11900	Intraday Pick	BALKRISIND
Resistance	12200	Intraday Pick	GAIL
	12300	Intraday Pick	JSWSTEEL

Corporate Actions

Company Name	Ex-Date	Purpose
Colgate Palmolive (India) Limited	4-Jun-19	Interim Dividend
GOVERNMENT OF INDIA	4-Jun-19	Interest Payment
Tata Power Company Limited	4-Jun-19	Annual General Meeting/Dividend - Rs 1.30 Per
GOVERNMENT OF INDIA	6-Jun-19	Interest Payment
GOVERNMENT OF INDIA	7-Jun-19	Interest Payment/Redemption
Navin Fluorine International Limited	7-Jun-19	Dividend Rs - 4 Per Share
GOVERNMENT OF INDIA	10-Jun-19	Interest Payment
Monsanto India Limited	10-Jun-19	Annual General Meeting/Dividend - Rs 25 Per Share
Vishnu Chemicals Limited	12-Jun-19	Dividend Re 1 Per Sh
Asian Paints Limited	13-Jun-19	Dividend Rs -7.65 Per Share
GOVERNMENT OF INDIA	13-Jun-19	Interest Payment
Infosys Limited	13-Jun-19	Annual General Meeting/Dividend- Rs 10.50 Per Share
Kansai Nerolac Paints Limited	13-Jun-19	Annual General Meeting/Dividend - Rs 2.60 Per Share
GOVERNMENT OF INDIA	17-Jun-19	Interest Payment
GOVERNMENT OF INDIA	17-Jun-19	Interest Payment
MAS Financial Services Limited	18-Jun-19	Dividend Rs -3.60 Per Share
Rallis India Limited	19-Jun-19	Annual General Meeting/ Dividend - Rs 2.50 Per Share
Security and Intelligence Services (India) Limited	19-Jun-19	Annual General Meeting/ Dividend - Rs 3.50 Per Sahre
Shriram Transport Finance Company Limited	19-Jun-19	Annual General Meeting/Dividend - Rs 7 Per Share
Allahabad Bank	20-Jun-19	Annual General Meeting
Hindustan Unilever Limited	20-Jun-19	Annual General Meeting/ Dividend - Rs 13 Per Share
Nilkamal Limited	20-Jun-19	Annual General Meeting/Dividend - Rs 9 Per Share
Shankara Building Products Limited	20-Jun-19	Annual General Meeting/Dividend - Rs 1.5 Per Share
Visaka Industries Limited	20-Jun-19	Annual General Meeting/ Dividend - Rs 7 Per Share
BSE Limited	27-Jun-19	Dividend - Rs 25 Per Share

Institutional Equity Research

## MARKET LENS

NIFTY 12089 IN FOCUS

June 04, 2019

Support	11985	Stock in Focus	KALPATARU POWER
	11900	Intraday Pick	BALKRISIND
Resistance	12200	Intraday Pick	GAIL
	12300	Intraday Pick	JSWSTEEL

## Result Calendar

Company name	Purpose	Board Meeting Date
National Fertilizers Limited	04-Jun-19	Dividend
National Fertilizers Limited	04-Jun-19	Dividend
National Fertilizers Limited	04-Jun-19	Dividend
National Fertilizers Limited	04-Jun-19	Dividend
National Fertilizers Limited	04-Jun-19	Dividend
Fedders Electric and Engineering Limited	04-Jun-19	Financial Results
National Fertilizers Limited	04-Jun-19	Dividend
DQ Entertainment (International) Limited	07-Jun-19	Financial Results
Pricol Limited	15-Jun-19	Financial Results
Pricol Limited	15-Jun-19	Financial Results
Exide Industries Limited	02-Aug-19	Financial Results
Mukand Engineers Limited	08-Aug-19	Financial Results

Institutional Equity Research

MARKET LENS

NIFTY 12089 IN FOCUS

June 04, 2019

Support	11985	Stock in Focus	KALPATARU POWER
	11900	Intraday Pick	BALKRISIND
Resistance	12200	Intraday Pick	GAIL
	12300	Intraday Pick	JSWSTEEL

Guided Allocation Towards Research Products

	Product Allocation (%)	Max. Allocation in 1 stock (%)	Number of Calls	Frequency	Call Duration
<b>Trading Products</b>					
Intraday	30	25-30	3-4 stocks	Daily	Daily
Positional Calls/weekly calls/BTST	30	15-20	6-7 stocks	Weekly	Fortnightly
TradEdge	15	25-50	2 stocks	Fortnightly	Monthly
Option Strategies	15	10-20	2 stocks	Weekly	Weekly
Cash	10				
<b>Total</b>	<b>100</b>				

	Product Allocation (%)	Max. Allocation in 1 stock (%)	Number of Calls	Frequency	Call Duration
<b>Investment Products</b>					
Rsec Model Portfolio	25	10	8-10 stocks	Monthly	Half Yearly
Stock In Focus	25	5	1 stock	Daily	Quarterly
Fundamental Calls	25	5	10	Quarterly	Yearly
Initiating Coverage	20	10		As and When	Yearly
Cash	5				
<b>Total</b>	<b>100</b>				

Institutional Equity Research

## MARKET LENS

NIFTY	12089	IN FOCUS	
Support	11985	Stock in Focus	KALPATARU POWER
	11900	Intraday Pick	BALKRISIND
Resistance	12200	Intraday Pick	GAIL
	12300	Intraday Pick	JSWSTEEL

June 04, 2019

Reliance Securities Limited (RSL), the broking arm of Reliance Capital is one of the India's leading retail broking houses. Reliance Capital is amongst India's leading and most valuable financial services companies in the private sector. Reliance Capital has interests in asset management and mutual funds, life and general insurance, commercial finance, equities and commodities broking, wealth management services, distribution of financial products, private equity, asset reconstruction, proprietary investments and other activities in financial services. The list of associates of RSL is available on the website [www.reliancecapital.co.in](http://www.reliancecapital.co.in). RSL is registered as a Research Analyst under SEBI (Research Analyst) Regulations, 2014

**General Disclaimers:** This Research Report (hereinafter called 'Report') is prepared and distributed by RSL for information purposes only. The recommendations, if any, made herein are expression of views and/or opinions and should not be deemed or construed to be neither advice for the purpose of purchase or sale of any security, derivatives or any other security through RSL nor any solicitation or offering of any investment /trading opportunity on behalf of the issuer(s) of the respective security(ies) referred to herein. These information / opinions / views are not meant to serve as a professional investment guide for the readers. No action is solicited based upon the information provided herein. Recipients of this Report should rely on information/data arising out of their own investigations. Readers are advised to seek independent professional advice and arrive at an informed trading/investment decision before executing any trades or making any investments. This Report has been prepared on the basis of publicly available information, internally developed data and other sources believed by RSL to be reliable. RSL or its directors, employees, affiliates or representatives do not assume any responsibility for, or warrant the accuracy, completeness, adequacy and reliability of such information / opinions / views. While due care has been taken to ensure that the disclosures and opinions given are fair and reasonable, none of the directors, employees, affiliates or representatives of RSL shall be liable for any direct, indirect, special, incidental, consequential, punitive or exemplary damages, including lost profits arising in any way whatsoever from the information / opinions / views contained in this Report.

**Risks:** Trading and investment in securities are subject to market risks. There are no assurances or guarantees that the objectives of any of trading / investment in securities will be achieved. The trades/ investments referred to herein may not be suitable to all categories of traders/investors. The names of securities mentioned herein do not in any manner indicate their prospects or returns. The value of securities referred to herein may be adversely affected by the performance or otherwise of the respective issuer companies, changes in the market conditions, micro and macro factors and forces affecting capital markets like interest rate risk, credit risk, liquidity risk and reinvestment risk. Derivative products may also be affected by various risks including but not limited to counter party risk, market risk, valuation risk, liquidity risk and other risks. Besides the price of the underlying asset, volatility, tenor and interest rates may affect the pricing of derivatives.

**Disclaimers in respect of jurisdiction:** The possession, circulation and/or distribution of this Report may be restricted or regulated in certain jurisdictions by appropriate laws. No action has been or will be taken by RSL in any jurisdiction (other than India), where any action for such purpose(s) is required. Accordingly, this Report shall not be possessed, circulated and/or distributed in any such country or jurisdiction unless such action is in compliance with all applicable laws and regulations of such country or jurisdiction. RSL requires such recipient to inform himself about and to observe any restrictions at his own expense, without any liability to RSL. Any dispute arising out of this Report shall be subject to the exclusive jurisdiction of the Courts in India.

**Disclosure of Interest:** The research analysts who have prepared this Report hereby certify that the views /opinions expressed in this Report are their personal independent views/opinions in respect of the securities and their respective issuers. None of RSL, research analysts, or their relatives had any known direct /indirect material conflict of interest including any long/short position(s) in any specific security on which views/opinions have been made in this Report, during its preparation. RSL's Associates may have other potential/material conflict of interest with respect to any recommendation and related information and opinions at the time of publication of research report. RSL, its Associates, the research analysts, or their relatives might have financial interest in the issuer company(ies) of the said securities. RSL or its Associates may have received a compensation from the said issuer company(ies) in last 12 months for the brokerage or non brokerage services. RSL, its Associates, the research analysts or their relatives have not received any compensation or other benefits directly or indirectly from the said issuer company(ies) or any third party in last 12 months in any respect whatsoever for preparation of this report.

The research analysts has served as an officer, director or employee of the said issuer company(ies)?: No

RSL, its Associates, the research analysts or their relatives holds ownership of 1% or more, in respect of the said issuer company(ies)?: No

**Copyright:** The copyright in this Report belongs exclusively to RSL. This Report shall only be read by those persons to whom it has been delivered. No reprinting, reproduction, copying, distribution of this Report in any manner whatsoever, in whole or in part, is permitted without the prior express written consent of RSL.

RSL's activities were neither suspended nor have defaulted with any stock exchange with whom RSL is registered. Further, there does not exist any material adverse order/judgments/strictures assessed by any regulatory, government or public authority or agency or any law enforcing agency in last three years. Further, there does not exist any material enquiry of whatsoever nature instituted or pending against RSL as on the date of this Report.

**Important** These disclaimers, risks and other disclosures must be read in conjunction with the information / opinions / views of which they form part of.

RSL CIN: U65990MH2005PLC154052. SEBI registration no. (Stock Broker: INZ000172433, Depository Participants: CDSL IN-DP-257-2016 IN-DP-NSDL-363-2013, Research Analyst: INH000002384); AMFI ARN No.29889.