

Technical Build up

- ❖ Doji candle with decrease in volume
- ❖ Buy crossover in oscillators.
- ❖ Upper band of Bollinger exist at 10956
- ❖ Crucial moving average of 20/50 SMA are at 10806 and 10749
- ❖ 200 SMA trend deciding level exist at 10821

Outlook for the day

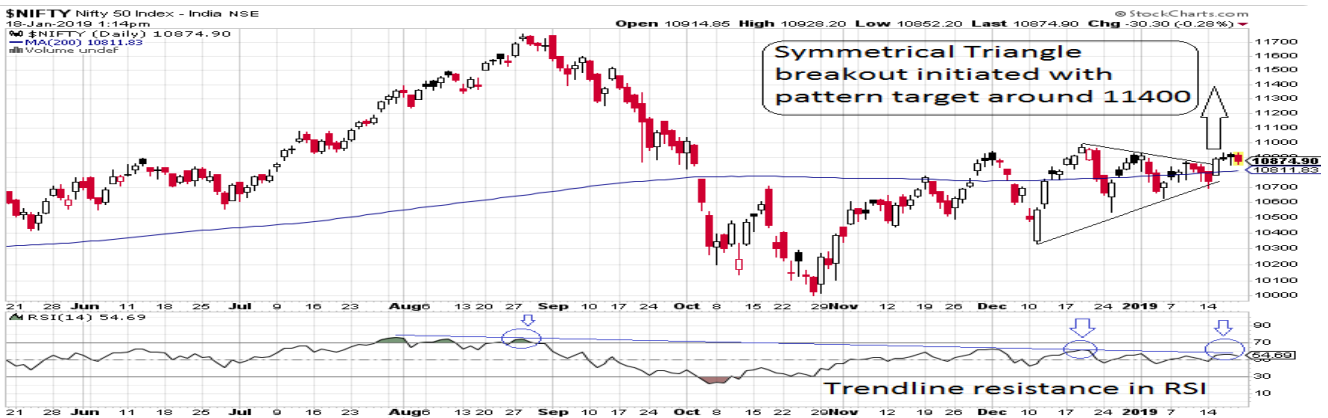
Indian Equity market closed marginally higher Friday after a volatile session as investors largely stuck to index heavyweights despite positive global cues. On sectoral front, IT outperformed the broader index Nifty 50 while AUTO, FIN SERVICE, FMCG, MEDIA, METAL, PHARMA, PSU BANK, PVT BANK and REALTY underperformed. On the technical front, Nifty formed long legged Doji, it seems that index has been undergoing a breather over the past two sessions after the breakout from the symmetrical triangle. Hence broader structural improvement indicates that Nifty might be at the vicinity to provide a breakout from narrow trading of 10500-11000 with probability being higher on the upside. Strengthening above 10985 would eventually lead towards 11100 as it is confluence of 61.8% retracement of 10005-11760 and 161.8% external retracement of last fall i.e. 10924-10629. On the downside upward sloping trend line drawn adjoining lows of October, December of 10005, 10334, respectively, is around 10590. On the option front maximum Put OI is at 10700 followed by 10500 strike while maximum Call OI is at 11000 followed by 10900 strike. It seems trades are initiating non-directional strategy and expecting the Index to witness large movement in either direction with long on Volatility hence Long Straddle is being considered.

World Indices	LTP	Daily Ch (Pts)	Daily Ch (%)
Dow Jones	24706	336	1.38
Nasdaq	7157	72	1.03
S&P 500	2670	34	1.32
FTSE 100	6968	133	1.95
DAX	11205	286	2.63
Hang Seng	27151	60	0.22
Nikkei	20741	75	0.33
Sensex	36386	12	0.03
Nifty	10906	1	0.02

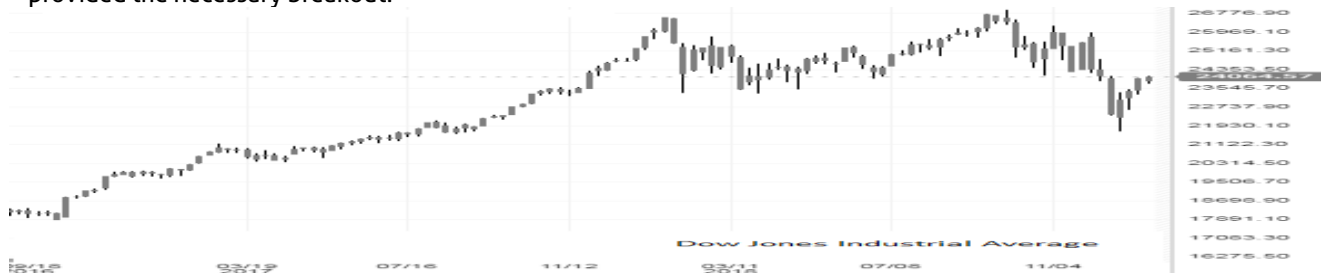
Commodity / Forex	LTP	Daily Ch (Pts)	Daily Ch (%)
Gold (\$/Oz)	1282.60	-9.70	-0.75
Silver (\$/Oz)	15.40	-0.14	-0.88
Copper (\$/lb.)	271.90	3.90	1.46
Brent Crude (\$/bl)	62.70	1.52	2.48
USD/INR	71.18	0.14	0.21
USD/YEN	109.78	0.52	0.48
USD/EUR	1.1363	-0.0026	-0.23

Support/Resistance levels for Indian Equity Indices					
	S1	S2	CMP	R1	R2
Sensex	36200	35970	36386	36530	36795
Nifty	10850	10780	10906	10950	11030
Nifty (Fut)	10870	10800	10927	10970	11060

Pivot Level		
Sensex	36358	
Nifty	10895	



US: U.S market rose on Friday as investors cheered potential progress in trade negotiations between China and the U.S. Technically it seems that present price consolidation has led to bullish Descending triangle formation and provided the necessary breakout.



Derivative Report

Nifty gained by 0.02% with Nifty future added 1.5 lakh shares in open interest and stock future added 196.7 Lakh shares in open interest.

- Nifty PCR increased to 1.56 from 1.52
- Total Nifty Calls shaded 19.2 lakh shares in open interest.
- Total Nifty Puts shaded 14.7 lakh shares in open interest.
- Maximum open interest (Nifty) in Calls for Nov series is at 11000 and 11000 put.
- FII's sold net Rs.124.91 Cr(provisional), while DIIs sold net Rs.0.97 Cr in cash market.
- FII sold net Rs.1029.78 Cr in F&O
- Securities in Ban Period: ADANIPOWER & JETAIRWAYS

Nifty Tracker

Particulars	18/01/2019	17/01/2019	16/01/2019	15/01/2019
Spot	10906.95	10905.2	10890.3	10886.8
% Change in Spot	0.02%	0.14%	0.03%	1.39%
Nifty(FUT) Dec	10927.15	10925.85	10921.65	10928.4
Nifty(FUT) Dec Vol.	106762	119253	104009	146944
Nifty(FUT) Dec - OI	24560475	24702750	25039275	25516725
Nifty(FUT) Jan	10963.1	10957.85	10952.2	10957.95
Nifty(FUT) Jan Vol.	6559	11994	14502	7846
Nifty(FUT) Jan - OI	2550600	2383350	2141925	1566000

Trade Statistics for 18/01/2019

Particulars	No. of Contracts	Turnover (Rs. Cr.)	Put Call Ratio
NSE Index Futures	211962	14818	-
NSE Stock Futures	809441	47641	-
NSE Index Options	6205794	391938	-
NSE Stock Options	980352	58934	0.58
NSE F&O Total Turnover	8207549	513,332	0.97
NSE Cash Turnover	-	27,590.51	-
BSE Cash Turnover	-	2,414.09	-
Total Turnover	-	543337	-

FII Corner (F&O)

FII NET BUYING/SELLING & CHANGE IN OPEN INTEREST (Cr. Rupee)						
Particulars	18/01/2019		17/01/2019		16/01/2019	
	Net Buying /Selling	Change In Open interest	Net Buying /Selling	Change In Open interest	Net Buying /Selling	Change In Open interest
Index Future	-398	258	-599	495	-818	2229
Index option	-1054	1136	620	71	366	2090
Stock Future	538	-267	445	221	171	818
Stock option	-115	594	-59	276	-44	313
Total	-1029	1722	407	1063	-325	5449

Market Open Interest

Addition/Reduction in Market Open Interest					
Contracts	18/01/2019	17/01/2019	16/01/2019	15/01/2019	14/01/2019
Index Futures	-104	163	666	1859	143
Index Options	-573	-93	574	2346	-568
Stock Futures	-45725	15302	7645	3883	9789
Stock Options	1567	1764	1563	-131	1150
F&O Total	-44835	17136	10447.68	7957.23	10513.93

Increase in OI with Increase in Price (Long Buildup)					
Symbol	Prev OI	Curr OI	CMP	Pr.Chg (%)	OI Chg (%)
APOLLOHOSP	738,500	858,000	1,359.95	1.21%	16.18%
IGL	3,720,750	4,226,750	280.2	0.97%	13.60%
WIPRO	29,378,400	31,519,200	346.1	2.96%	7.29%
ASIANPAINT	6,421,200	6,875,400	1,405	0.67%	7.07%
CESC	1,207,800	1,291,400	691.25	0.52%	6.92%

Increase in OI with Decrease in Price (Short Buildup)					
Symbol	Prev OI	Curr OI	CMP	Pr.Chg (%)	OI Chg (%)
SUNPHARMA	47,062,400	60,584,700	392.05	-8.32%	28.73%
RELCAPITAL	13,009,500	15,246,000	210	-3.80%	17.19%
INDIANB	3,980,000	4,582,000	244.5	-6.03%	15.13%
SBIN	77,787,000	88,980,000	296.55	-0.77%	14.39%
SUNTV	7,397,000	8,222,000	525	-7.51%	11.15%

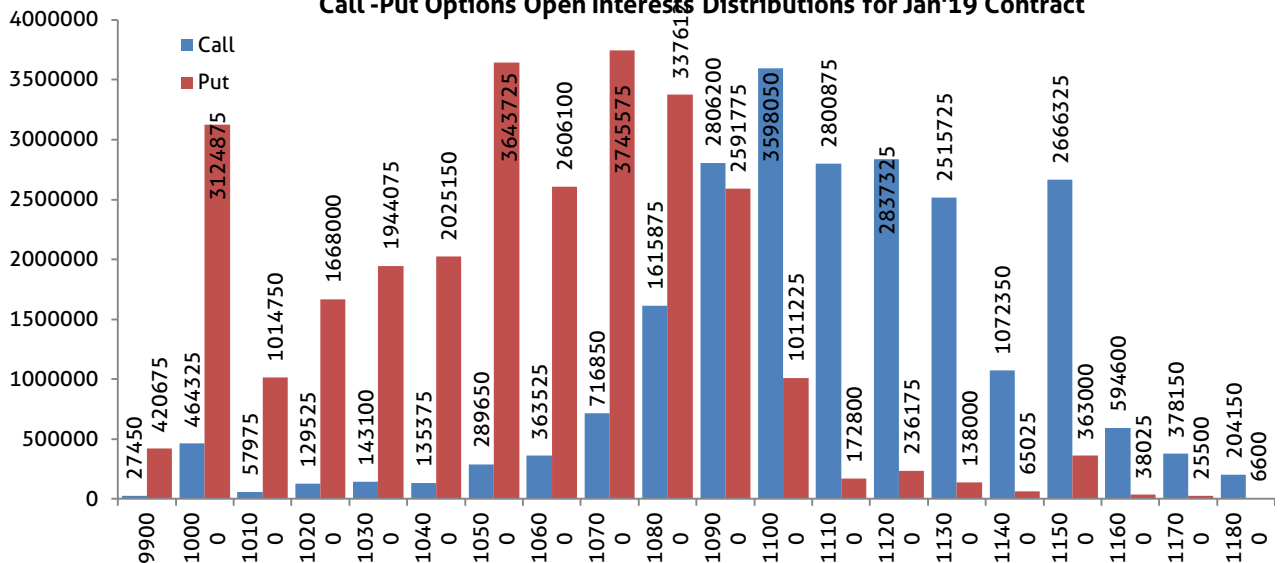
Nifty Option Open Interest Statistics

Nifty Options Highest ADDITION in Open Interest						
Expiry	Strike	Option Type	Settlement Price	Volume	Open Interest	Change In OI
28-Mar-19	11000	PE	292.65	8241	725100	474600
27-Jun-19	5000	CE	5832.7	3408	1424100	151800
31-Jan-19	10300	PE	9.25	30808	1944075	151425
28-Feb-19	11000	CE	206.7	8038	781725	80475
31-Jan-19	11150	CE	27.3	8381	237750	51150
31-Jan-19	10700	PE	44.9	112737	3745575	32700
28-Feb-19	10900	PE	207.25	3417	198750	27525
28-Feb-19	10300	PE	64.35	2074	836850	21525
28-Feb-19	11600	CE	20.95	2300	135975	20925
28-Mar-19	10500	PE	149.4	1262	294300	20325

Nifty Options Highest **REDUCTION** in Open Interest

Expiry	Strike	Option Type	Settlement Price	Volume	Open Interest	Change In OI
28-Feb-19	11000	PE	252	13272	1305825	-428250
31-Jan-19	11100	CE	39.95	127488	2800875	-319425
31-Jan-19	9500	PE	2.95	10804	2043600	-272325
31-Jan-19	11500	CE	3.3	30354	2666325	-211800
31-Jan-19	11400	CE	4	29811	1072350	-204300
31-Jan-19	11000	CE	75.1	242144	3598050	-192225
31-Jan-19	10500	PE	19.7	77289	3643725	-189450
31-Jan-19	10600	PE	29.6	69864	2606100	-174150
31-Jan-19	10000	PE	3.95	18367	3124875	-164475
31-Jan-19	11500	PE	573.3	3531	363000	-160875

Call -Put Options Open Interests Distributions for Jan'19 Contract



Stock Option Open Interest Statistics

Stock Options With Highest **ADDITION** in Open Interest

Symbol	Expiry	Strike	Option Type	Settl. Price	Volume	Open Interest	Change in OI
SUNPHARMA	31-Jan-19	400	CE	12.75	13486	2477200	2443100
YESBANK	31-Jan-19	180	PE	5	3827	5951750	2121000
SUNPHARMA	31-Jan-19	420	CE	5.95	8322	1988800	1820500
HINDALCO	31-Jan-19	225	CE	0.55	791	3339000	1690500
SUNPHARMA	31-Jan-19	440	CE	2.65	6001	2183500	1408000
IDEA	31-Jan-19	36	CE	0.75	320	1536000	1068000
GMRINFRA	31-Jan-19	20	CE	0.05	23	9585000	1035000
RELIANCE	31-Jan-19	1140	PE	7.15	25273	1802500	990000
RELIANCE	31-Jan-19	1160	PE	11.5	15646	1129000	987000
BHARTIARTL	31-Jan-19	320	CE	5.55	2589	1234200	982600

Stock Options With Highest REDUCTION in Open Interest

Symbol	Expiry	Strike	Option Type	Settl. Price	Volume	Open Int.	Change in OI
FEDERALBNK	31-Jan-19	90	CE	2.15	1490	3528000	-1351000
FEDERALBNK	31-Jan-19	95	CE	0.75	2990	7196000	-1246000
RELIANCE	31-Jan-19	1140	CE	52.1	19400	1074000	-993000
FEDERALBNK	31-Jan-19	100	CE	0.3	1310	6489000	-861000
RELIANCE	31-Jan-19	1160	CE	36.7	35322	1334000	-817500
YESBANK	31-Jan-19	205	CE	7.3	2292	2191000	-668500
BHEL	31-Jan-19	70	CE	2.2	300	1447500	-510000
FEDERALBNK	31-Jan-19	92.5	CE	1.25	840	4298000	-497000
RCOM	31-Jan-19	18	CE	0.1	32	4148000	-476000
SAIL	31-Jan-19	55	CE	0.2	140	7068000	-468000

Pivot Point Table for Today's trade

Co. Name	CMP (as on 18.01.19)	Support 2	Support 1	Pivot Point	Resistance 1	Resistance 2
NIFTY	10907.0	10807.5	10856.4	10893.5	10942.4	10979.5
BANKNIFTY	27456.7	27215.4	27372.1	27491.8	27648.5	27768.2
ACC	1439.8	1428.5	1441.8	1463.6	1476.9	1498.7
ADANIENT	146.8	144.0	146.5	148.9	151.4	153.8
ADANIPOWER	399.3	383.2	388.9	392.2	397.8	401.1
ADANIPOWER	50.8	48.5	49.7	50.5	51.7	52.6
AJANTPHARM	1140.8	1122.9	1137.2	1146.6	1160.9	1170.3
ALBK	43.8	43.6	44.0	44.5	44.9	45.4
AMARAJABAT	782.1	755.4	770.3	780.9	795.8	806.4
AMBUJACEM	212.7	211.8	213.5	216.0	217.7	220.2
APOLLOHOSP	1366.3	1333.6	1343.3	1351.0	1360.7	1368.4
APOLLOTYRE	217.9	215.2	216.8	219.3	220.9	223.5
ARVIND	93.1	92.3	93.4	94.9	96.0	97.5
ASHOKLEY	92.3	92.2	92.7	93.6	94.1	95.0
ASIANPAINT	1400.5	1375.9	1382.8	1390.6	1397.5	1405.3
AUROPHARMA	770.1	756.5	765.7	778.5	787.8	800.6
AXISBANK	664.6	659.7	668.2	674.1	682.6	688.5
BAJAJ-AUTO	2720.8	2684.4	2707.0	2723.4	2746.0	2762.4
BAJAJFINSV	6249.9	6244.4	6301.7	6393.4	6450.7	6542.3
BAJFINANCE	2542.9	2490.3	2513.1	2549.8	2572.6	2609.3
BALKRISIND	868.4	863.9	868.5	873.1	877.8	882.4
BANKBARODA	118.0	116.1	117.7	119.6	121.2	123.1
BANKINDIA	102.7	101.3	102.8	104.3	105.9	107.4
BATAINDIA	1155.9	1123.1	1137.7	1152.9	1167.5	1182.7
BEL	86.4	85.1	86.1	87.8	88.8	90.5
BEML	892.1	865.1	880.1	900.4	915.4	935.7
BERGEPAINT	326.2	320.6	322.7	324.7	326.8	328.8
BHARATFIN	957.9	947.2	954.9	963.5	971.2	979.8

Pivot Point Table for Today's trade

Co. Name	CMP (as on 18.01.19)	Support 2	Support 1	Pivot Point	Resistance 1	Resistance 2
BHARATFORG	479.8	481.2	485.2	489.6	493.6	497.9
BHARTIARTL	311.2	326.5	329.3	333.0	335.8	339.6
BHEL	71.0	67.1	68.6	69.5	71.0	71.9
BIOCON	652.1	645.1	651.4	655.7	662.0	666.3
BOSCHLTD	19210.5	18850.2	19000.4	19115.2	19265.4	19380.2
BPCL	354.2	341.8	348.5	352.8	359.5	363.7
BRITANNIA	3171.4	3161.1	3184.1	3198.1	3221.1	3235.0
CADILAHC	347.1	348.4	352.1	355.3	359.0	362.2
CANBK	272.6	266.8	271.1	274.2	278.5	281.6
CANFINHOME	269.0	267.9	272.0	277.1	281.2	286.3
CAPF	587.2	572.6	582.5	589.9	599.9	607.3
CASTROLIND	165.7	161.6	164.0	166.5	168.9	171.4
CEATLTD	1232.1	1213.8	1223.3	1230.5	1240.0	1247.1
CENTURYTEX	882.2	867.4	880.7	892.6	905.9	917.9
CESC	689.0	664.3	675.2	690.8	701.8	717.4
CGPOWER	43.1	41.9	42.8	43.9	44.7	45.8
CHENNPETRO	263.1	259.5	262.8	265.7	269.0	271.9
CHOLAFIN	1176.2	1168.1	1182.1	1195.1	1209.1	1222.1
CIPLA	509.4	503.4	506.5	510.7	513.8	518.1
COALINDIA	230.0	229.4	230.7	231.7	233.1	234.1
COLPAL	1310.8	1308.4	1317.5	1330.6	1339.7	1352.8
CONCOR	683.9	675.1	684.8	694.9	704.5	714.6
CUMMINSIND	844.4	820.1	830.9	843.4	854.2	866.6
DABUR	424.1	412.5	416.4	421.6	425.5	430.7
DALMIABHA	2372.9	2315.7	2356.9	2398.5	2439.7	2481.2
DCBBANK	185.6	177.0	181.7	185.0	189.7	193.0
DHFL	216.1	213.0	216.4	221.4	224.8	229.7
DISHTV	33.7	33.8	34.3	35.3	35.9	36.9
DIVISLAB	1509.2	1468.7	1487.0	1517.5	1535.8	1566.3
DLF	180.4	179.6	181.9	183.9	186.2	188.1
DRREDDY	2596.8	2587.2	2603.2	2616.0	2632.0	2644.8
EICHERMOT	20122.8	19772.1	20071.0	20459.4	20758.3	21146.7
ENGINERSIN	117.0	114.6	116.5	120.0	121.9	125.4
EQUITAS	119.0	114.3	116.9	120.8	123.4	127.3
ESCORTS	729.0	713.9	723.9	732.9	742.9	751.9
EXIDEIND	246.8	246.6	248.6	251.5	253.5	256.4
FEDERALBNK	90.0	82.9	85.7	89.2	92.0	95.6
GAIL	322.2	323.6	328.0	330.7	335.1	337.8
GLENMARK	640.4	646.2	653.8	658.9	666.6	671.7
GMRINFRA	16.3	16.0	16.2	16.4	16.6	16.9
GODFRYPHLP	951.8	924.9	944.8	966.8	986.6	1008.6
GODREJCP	789.7	765.8	779.5	788.8	802.5	811.8
GODREJIND	525.6	519.9	523.9	528.4	532.4	537.0
GRANULES	88.3	88.7	89.5	90.2	91.0	91.7

Pivot Point Table for Today's trade

Co. Name	CMP (as on 18.01.19)	Support 2	Support 1	Pivot Point	Resistance 1	Resistance 2
GRASIM	825.0	811.1	819.6	829.5	838.0	847.9
GSFC	107.9	109.8	110.4	111.3	112.0	112.9
HAVELLS	677.5	667.2	671.7	678.7	683.2	690.3
HCC	13.4	12.9	13.0	13.1	13.2	13.3
HCLTECH	966.3	924.4	939.5	948.3	963.4	972.2
HDFC	2006.9	1968.9	1986.7	1996.9	2014.7	2024.8
HDFCBANK	2130.3	2104.6	2118.5	2127.2	2141.0	2149.7
HEROMOTOCO	2898.8	2828.6	2866.1	2901.5	2939.0	2974.4
HEXAWARE	325.2	315.4	320.1	323.9	328.6	332.4
HINDALCO	208.8	203.3	204.6	206.7	208.0	210.1
HINDPETRO	239.5	238.1	241.2	243.8	246.8	249.4
HINDUNILVR	1744.1	1721.0	1736.3	1757.8	1773.0	1794.5
HINDZINC	272.4	267.4	269.6	272.7	274.9	278.0
IBULHSGFIN	817.4	784.7	800.7	827.1	843.1	869.5
ICICIBANK	372.0	370.0	372.3	375.1	377.4	380.3
ICICIPRULI	351.2	340.9	345.3	349.6	354.1	358.4
IDBI	58.2	58.8	59.8	61.0	62.0	63.2
IDEA	35.2	35.6	36.3	36.7	37.4	37.9
IDFC	43.2	42.2	42.9	43.6	44.3	45.1
IDFCFIRSTB	47.1	45.8	46.5	47.8	48.5	49.7
IFCI	14.6	14.4	14.6	14.9	15.1	15.4
IGL	280.5	269.0	273.1	275.5	279.6	282.0
INDIACEM	85.0	83.7	84.9	86.7	87.9	89.8
INDIANB	246.0	253.2	256.7	259.5	263.0	265.8
INDIGO	1076.0	1079.0	1095.9	1118.5	1135.4	1158.0
INDUSINDBK	1516.9	1497.0	1510.0	1523.0	1536.0	1549.0
INFIBEAM	44.5	42.8	43.8	45.0	46.0	47.2
INFRATEL	278.1	273.8	277.1	279.7	283.1	285.7
INFY	731.0	723.9	728.6	733.8	738.5	743.7
IOC	137.9	134.1	135.9	137.1	138.9	140.1
IRB	149.9	152.2	153.6	154.9	156.3	157.5
ITC	291.5	287.8	290.9	293.2	296.3	298.7
JETAIRWAYS	281.2	239.7	262.5	279.2	302.0	318.6
JINDALSTEL	145.7	142.8	144.4	146.3	147.9	149.8
JISLJALEQS	64.7	63.9	64.6	65.7	66.4	67.6
JPASSOCIAT	7.2	7.1	7.2	7.3	7.4	7.5
JSWSTEEL	285.6	283.7	286.4	288.5	291.1	293.2
JUBLFOOD	1218.0	1181.8	1197.0	1213.3	1228.5	1244.8
JUSTDIAL	472.2	459.9	468.6	483.3	492.1	506.8
KAJARIACER	535.0	526.9	530.9	535.7	539.8	544.6
KOTAKBANK	1240.2	1190.0	1205.0	1215.0	1230.0	1240.1
KPIT	216.2	206.1	209.8	214.4	218.1	222.6
KSCL	561.7	561.1	566.5	572.6	578.0	584.1
KTKBANK	122.1	116.1	118.5	120.1	122.5	124.1

Pivot Point Table for Today's trade

Co. Name	CMP (as on 18.01.19)	Support 2	Support 1	Pivot Point	Resistance 1	Resistance 2
L&TFH	140.7	138.0	139.7	141.9	143.6	145.8
LICHSGFIN	476.1	480.7	485.7	490.0	495.0	499.3
LT	1317.9	1330.1	1338.1	1344.9	1352.9	1359.8
LUPIN	862.3	853.1	860.9	868.0	875.8	882.9
M&M	735.0	722.2	728.4	734.2	740.5	746.3
M&MFIN	441.6	435.8	441.8	449.5	455.5	463.2
MANAPPURAM	97.4	95.2	97.4	99.1	101.3	103.0
MARICO	379.4	375.4	377.8	380.6	383.0	385.8
MARUTI	7358.0	7256.1	7296.2	7347.6	7387.6	7439.0
MCDOWELL-N	584.3	586.7	590.8	595.3	599.5	604.0
MCX	742.2	737.7	744.2	751.0	757.4	764.2
MFSL	457.2	450.5	453.8	458.2	461.5	465.9
MGL	904.5	883.6	891.7	898.4	906.5	913.2
MINDTREE	887.0	802.7	835.3	854.3	886.9	905.9
MOTHERSUMI	157.6	155.1	157.4	160.8	163.1	166.5
MRF	65739.8	65206.9	65504.9	65897.9	66195.9	66588.9
MRPL	69.4	68.8	69.6	70.4	71.2	72.1
MUTHOOTFIN	527.6	522.8	528.1	534.0	539.3	545.2
NATIONALUM	61.5	61.0	61.4	61.8	62.2	62.6
NBCC	58.0	57.1	58.0	59.1	60.0	61.1
NCC	88.0	87.0	88.3	89.4	90.7	91.8
NESTLEIND	11248.4	11062.6	11114.2	11173.6	11225.1	11284.5
NHPC	25.2	24.9	25.2	25.7	26.0	26.5
NIITTECH	1224.8	1194.2	1208.2	1219.0	1233.0	1243.8
NMDC	90.7	90.8	91.3	92.1	92.6	93.3
NTPC	144.3	142.2	143.6	145.6	147.0	149.0
OFSS	3615.9	3627.9	3661.1	3691.6	3724.8	3755.3
OIL	172.4	169.9	171.3	173.3	174.7	176.7
ONGC	146.8	142.6	143.8	145.6	146.8	148.6
ORIENTBANK	95.4	92.5	94.7	96.7	98.8	100.8
PAGEIND	22969.7	22875.4	23070.6	23315.2	23510.4	23755.0
PCJEWELLER	78.2	77.2	78.5	79.9	81.1	82.5
PEL	2296.2	2359.3	2373.6	2384.3	2398.6	2409.3
PETRONET	218.6	218.0	220.0	221.3	223.3	224.6
PFC	107.3	104.8	105.9	107.8	108.9	110.7
PIDILITIND	1148.8	1138.4	1145.0	1155.3	1161.9	1172.3
PNB	82.9	82.1	83.3	84.2	85.4	86.3
POWERGRID	193.6	190.9	192.4	193.5	195.0	196.0
PTC	87.4	87.6	88.5	90.0	90.9	92.4
PVR	1621.1	1607.9	1621.0	1638.0	1651.1	1668.1
RAMCOCEM	622.9	614.5	620.8	630.4	636.7	646.3
RAYMOND	807.0	792.0	800.7	815.3	824.0	838.5
RBLBANK	569.7	562.1	566.0	570.0	573.9	577.9
RCOM	13.4	13.2	13.4	13.7	13.9	14.2

Pivot Point Table for Today's trade

Co. Name	CMP (as on 18.01.19)	Support 2	Support 1	Pivot Point	Resistance 1	Resistance 2
RECLTD	126.2	124.1	126.2	127.9	130.1	131.8
RELCAPITAL	210.1	208.1	212.9	219.6	224.4	231.2
RELIANCE	1184.4	1119.6	1127.0	1137.5	1144.9	1155.4
RELINFRA	298.3	279.7	288.1	302.4	310.8	325.2
REPCOHOME	430.7	431.4	438.3	444.1	451.0	456.9
RPOWER	28.5	28.3	28.8	29.6	30.1	30.9
SAIL	49.7	49.0	49.5	50.1	50.6	51.2
SBIN	295.0	290.4	293.9	299.1	302.6	307.9
SHREECEM	15590.3	15446.5	15680.6	15960.3	16194.4	16474.1
SIEMENS	1054.8	1044.4	1054.6	1062.2	1072.4	1080.0
SOUTHBANK	15.6	15.2	15.5	15.8	16.1	16.4
SREINFRA	33.5	32.2	32.8	33.6	34.2	35.0
SRF	2071.2	2019.6	2035.3	2048.1	2063.8	2076.6
SRTRANSFIN	1135.8	1102.1	1125.8	1166.7	1190.4	1231.3
STAR	517.3	517.4	522.9	527.0	532.5	536.5
SUNPHARMA	390.8	401.9	414.2	434.8	447.1	467.7
SUNTV	525.2	555.0	560.0	568.2	573.2	581.5
SUZLON	5.3	5.2	5.3	5.3	5.4	5.4
SYNDIBANK	37.8	38.7	39.1	39.6	40.0	40.4
TATACHEM	693.7	685.8	689.4	693.7	697.4	701.7
TATACOMM	520.1	515.4	523.3	529.4	537.3	543.4
TATAELXSI	962.9	955.0	961.7	970.7	977.4	986.3
TATAGLOBAL	216.3	213.6	215.9	217.3	219.6	221.0
TATAMOTORS	183.3	181.3	183.1	185.2	187.0	189.1
TATAMTRDVR	97.1	95.4	96.8	98.2	99.6	101.0
TATAPOWER	76.0	74.0	75.0	76.0	77.0	78.0
TATASTEEL	470.7	466.2	469.7	474.0	477.4	481.7
TCS	1900.7	1861.2	1877.7	1887.9	1904.4	1914.6
TECHM	709.2	690.5	698.0	703.6	711.1	716.7
TITAN	961.0	945.9	953.7	959.4	967.2	972.8
TORNTPHARM	1897.8	1830.0	1858.0	1906.5	1934.5	1983.0
TORNTPOWER	265.0	257.5	259.6	262.8	264.8	268.0
TV18BRDCST	34.1	34.4	35.2	36.7	37.5	39.1
TVSMOTOR	535.7	536.7	541.9	547.4	552.7	558.2
UBL	1414.8	1389.2	1399.9	1412.7	1423.3	1436.1
UJJIVAN	286.5	278.9	283.3	288.6	292.9	298.2
ULTRACEMCO	3820.0	3752.3	3799.4	3857.1	3904.1	3961.8
UNIONBANK	92.5	91.6	93.2	95.1	96.7	98.6
UPL	766.1	756.3	762.7	768.1	774.5	779.9
VEDL	198.7	194.2	195.8	197.0	198.7	199.9
VGUARD	207.3	202.0	204.5	206.0	208.4	209.9
VOLTAS	535.2	528.0	531.3	535.8	539.2	543.7
WIPRO	346.2	328.2	331.8	335.2	338.8	342.2
WOCKPHARMA	489.4	490.0	495.6	504.7	510.3	519.4
YESBANK	198.6	194.5	198.0	203.8	207.3	213.1
ZEEL	440.3	421.2	431.1	444.1	453.9	466.9

Bulk Deal

FID FUNDS AIAN SMALLER COMP POOL BOUGHT 699673 EQUITY SHARES OF Gic Housing Finance Ltd @ Rs. 267.49

FIDELITY ASIAN VALUES PLC BOUGHT 724808 EQUITY SHARES OF Gic Housing Finance Ltd @ Rs. 267.49

FIDELITY FUNDS-ASIAN SMALLER COMPANIES POOL BOUGHT 698267 EQUITY SHARES OF GICHSGFIN @ Rs. 267.49

Insider Trade

KCT Management Services Private Limited Promoter Acquisition 45111 shares of WATERBASE LTD. on 10-Jan-18

Eros Worldwide FZ LLC Promoter Acquisition 50000 shares of EROS INTERNATIONAL MEDIA LTD. on 17-Jan-19

TRISHASHNA HOLDINGS & INVESTMENTS PRIVATE LIMITED Promoter Acquisition 56000 shares of Satin Creditcare Network Ltd on 15-Jan-19

Dr. Azad Moopen Promoter & Director Acquisition 12000 shares of Aster DM Healthcare Ltd on 16-Jan-19

Sunrays Properties and Investments Company Pvt Ltd Promoter Group Pledge 3500000 shares of APOLLO TYRES LTD. on 15-Jan-19

BVM Finance Private Limited Promoter Revoke 1600000 shares of SINTEX INDUSTRIES LTD. on 15-Jan-19

Diwakar Viniyog Private Limited Promoter Group Pledge 536000 shares of EMAMI LTD.-\$ on 15-Jan-19

Guild Builders Private Limited Promoter Pledge 700000 shares of OMAXE LTD. on 14-Jan-19

Ashika Stock Broking Limited ("ASBL") or Research Entity has started its journey in the year 1994 and is engaged in the business of broking services, depository services, distributor of financial products (Mutual fund, IPO & Bonds). This research report has been prepared and distributed by ASBL in the sole capacity of a Research Analyst (Reg No. INH00000206) of SEBI (Research Analyst) Regulations 2014. ASBL is a wholly owned subsidiary of Ashika Global Securities (P) Ltd., a RBI registered non-deposit taking NBFC Company. Ashika group (details is enumerated on our website www.ashikagroup.com) is an integrated financial service provider inter alia engaged in the business of Investment Banking, Corporate Lending, Commodity Broking, Debt Syndication & Other Advisory Services.

There were no significant and material disciplinary actions against ASBL taken by any regulatory authority during last three years.

Disclosure

ASBL or its associates, its Research Analysts (including their relatives) may have financial interest in the subject company(ies). However, the said financial interest is not limited to having an open stock market position in /acting as advisor to /having a loan transaction with the subject company(ies) apart from registration as clients.

- 1) ASBL or its Research Analysts (including their relatives) do not have any actual / beneficial ownership of 1% or more of securities of the subject company(ies) at the end of the month immediately preceding the date of publication of this report or date of the public appearance. However ASBL's associates may have actual / beneficial ownership of 1% or more of securities of the subject company(ies).
- 2) ASBL or their Research Analysts (including their relatives) do not have any other material conflict of interest at the time of publication of this research report or date of the public appearance. However ASBL's associates might have an actual / potential conflict of interest (other than ownership).
- 3) ASBL or its associates may have received compensation for investment banking, merchant banking, and brokerage services and for other products and services from the subject companies during the preceding 12 months. However, ASBL or its associates or its Research analysts (forming part of Research Desk) have not received any compensation or other benefits from the subject companies or third parties in connection with the research report. Moreover, Research Analysts have not received any compensation from the companies mentioned herein in the past twelve months.
- 4) ASBL or their Research Analysts have not managed or co-managed public offering of securities for the subject company(ies) in the past twelve months. However ASBL's associates may have managed or co-managed public offering of securities for the subject company(ies) in the past twelve months.
- 5) Research Analysts have not served as an officer, director or employee of the companies mentioned in the report.
- 6) Neither ASBL nor its Research Analysts have been engaged in market making activity for the companies mentioned in the report.

Disclaimer

The research recommendation and information herein are solely for the personal information of the authorized recipient and does not construe to be an offer documents or any investment, legal or taxation advice or solicitation of any action based upon it. This report is not for public distribution or use by any person or entity, where such distribution, publication, availability or use would be contrary to law, regulation or subject to any registration or licensing requirement. We will not treat recipients as customer by virtue of their receiving this report. The report is based upon the information obtained from public sources that we consider reliable, but we do not guarantee its accuracy or completeness. ASBL shall not be in anyways responsible for any loss or damage that may arise to any such person from any inadvertent error in the information contained in this report. The recipients of this report should rely on their own investigations.