

Technical Report

Closing Brief

Benchmark indices in previous trading session opened on a strong note but lately lost its ground soon after the market opened. The 2 day crucial GST meet ended where rates for maximum goods have been decided. Nifty finally ended at 9427.90 levels down by 1.55 points or 0.02%.

Technical Build up

- ❖ Bearish candle with increase in volume
- ❖ Sell crossover in oscillators.
- ❖ Upper band of Bollinger exist at 9541
- ❖ Crucial moving average of 20/50 SMA are at 9355 and 9213
- ❖ 200 SMA trend deciding level exist at 8696

Outlook for the day

Indian Equity market settled flat in a volatile session, continuing its consolidation phase. Concern over US political chaos and sharp fall in Brazil being a key part of Ems kept the market at edge. FMCG counters buzzed following finalisation of GST rates for bulk of the items. On the technical front, indicating a reversal in the existing uptrend however before drawing conclusion once should wait for Nifty to breach the upward rising trendline since December 2016 onward and now the elevated trendline presently stands around 9370. The said level further coincides with projected 150% retracement of the entire fall from September 2016 till December 2016. Breach of the said support might act extremely negative for the market and might head towards the previous swing low of 9270-9200. The momentum oscillators are also in extremely overbought zone suggesting a pause or correction. Upside might be capped at 9550. On the F&O front Nifty has been continuously adding open interest with every up move which indicates strength in the current trend. Hereafter the range of 9300-9500 will remain crucial in expiry week. The put-call ratio of open interest closed at 1.32 indicating put writing. The options open interest concentration is at the 9500-strike call with the highest open interest; among put options the 9300-strike had witnessed the maximum buildup

Technical & Derivative Report

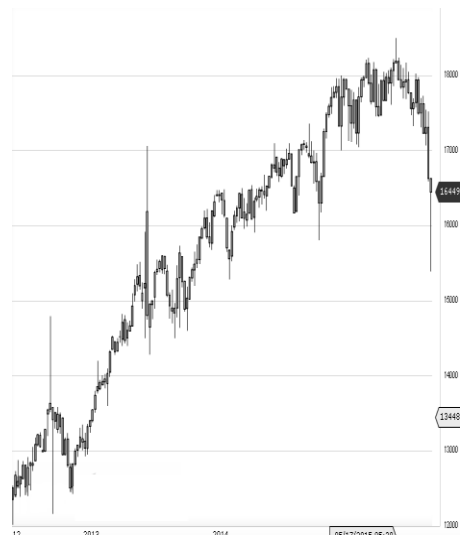
World Indices	LTP	Daily Ch(Pts)	Daily Ch(%)
Dow Jones	20804	141	0.69
Nasdaq	6083	28	0.47
S&P 500	2381	16	0.68
FTSE 100	7470	34	0.46
DAX	12638	48	0.39
Hang Seng			
Nikkei			
Sensex	30464	30	0.10
Nifty	9427	-1	-0.02

Commodity /Forex	LTP	Daily Ch(Pts)	Daily Ch(%)
Gold (\$/Oz)	1253.60	0.80	0.06
Silver (\$/Oz)	16.84	0.04	0.26
Copper(USD/lb.)	258.15	5.00	1.98
Brent Crude(USD/bbl)	53.61	1.10	2.09
USD/INR	64.63	-0.20	-0.32
USD/YEN	111.26	-0.23	-0.21
USD/EUR	1.1206	0.01	0.93

Support/Resistance levels for Indian Equity Indices					
	S1	S2	CMP	R1	R2
Sensex	30300	30140	30464	30650	30780
Nifty	9380	9330	9427	9480	9520
Nifty (Fut)	9400	9350	9445	9500	9540

Pivot Level					
Sensex				30505	
Nifty				9441	

US: US market closed higher on Friday as concerns about Donald Trump's presidency recede for the time being. Technically DJIA is presently trading at the 5th leg through Elliot wave count with negative divergence in oscillators.



Increase in OI with Increase in Price (Long Buildup)

Symbol	Prev OI	Curr OI	OI Chg (%)	Curr Pr.	Pr.Chg (%)
MUTHO					
OTFIN	1528500	1812000	18.6	383	0.9
HINDUN					
ILVR	9170400	9612600	4.8	1008	1.8
	3.01E+0	3.07E+0			
SUZLON	8	8	2	20.95	4.2
IBREALE	2446000	2487000			
ST	0	0	1.7	169	0.3
	4540320	4608960			
ITC	0	0	1.5	286.3	2.6

Increase in OI with Decrease in Price (Short Buildup)

Symbol	Prev OI	Curr OI	OI Chg (%)	Curr Pr.	Pr.Chg (%)
UJIVAN	5187600	5917200	14.1	320.85	[6.1]
	1336400	1395800			
GAIL	0	0	4.4	402.6	[0.6]
INDIGO	1542600	1597200	3.5	1076.95	[1.8]
	3538988	3617362			
SINTEX	0	0	2.2	112	[4.9]
RAYMO					
ND	1152000	1175200	2	718	[3.6]

Nifty declined by 0.02% with Nifty future shaded 4.3 lakh shares in open interest and stock future added 69.7 Lakh shares in open interest.

- Nifty PCR decreased to 1.21 from 1.26
- Total Nifty Calls added 20.0 lakh shares in open interest.
- Total Nifty Puts shaded 6.2 lakh shares in open interest.
- Maximum open interest (Nifty) in Calls for May series is at 9500 and 9300 put.
- FII's sold net Rs. 988.7 Cr(provisional), while DIIs bought net Rs.349.21 Cr in cash market.
- FII bought net Rs.1958.72 Cr in F&O
- Securities in Ban Period: BHARATFIN, CAPF, CEATLTD, CESC, HDIL, IDBI, INFIBEAM, JINDALSTEL, JISJALEQS, JPASSOCIAT, JSWENERGY, ORIENTBANK & TV18BRDCAST

Nifty Tracker

PARTICULARS	19/05/2017	18/05/2017	17/05/2017	16/05/2017
Spot	9427.9	9429.45	9525.75	9512.25
% Change in Spot	-0.02%	-1.01%	0.14%	0.71%
Nifty(FUT) May	9445.75	9440.7	9533.75	9522.15
Nifty(FUT) May Vol.	164078	134391	73353	107373
Nifty(FUT) May - OI	19109250	20046075	22242975	21739800
Nifty(FUT) June	9450.65	9441.9	9532.85	9520.75
Nifty(FUT) June Vol.	19421	12920	6618	8135
Nifty(FUT) June - OI	2706900	2287050	2051100	1909800

Trade Statistics for 19/05/2017

PARTICULARS	NO. OF CONTRACTS	TURNOVER (RS. CR.)	PUT CALL RATIO
NSE Index Futures	2,92,998	22863	-
NSE Stock Futures	9,75,920	71523	-
NSE Index Options	63,61,896	4,91,554.99	-
NSE Stock Options	7,81,047	60539	0.56
NSE F&O Total Turnover	84,11,861	646,480	1.11
NSE Cash Turnover	-	29,187.64	-
BSE Cash Turnover	-	4,134.78	-
Total Turnover	-	679802	-

FII Corner (F&O)

FII NET BUYING/SELLING & CHANGE IN OPEN INTEREST (Cr. Rupee)						
PARTICULARS	19/05/2017		18/05/2017		17/05/2017	
	Net Buying /Selling	Change In Open interest	Net Buying /Selling	Change In Open interest	Net Buying /Selling	Change In Open interest
Index Future	333	-566	-141	-375	-8	587
Index option	966	687	2685	-1232	24	3918
Stock Future	671	-559	-1124	-1550	-21	1153
Stock option	-12	134	-170	207	-111	379
Total	1958	-305	1250	-2950	-116	6037

Market Open Interest

ADDITION/REDUCTION IN MARKET OPEN INTEREST					
Contracts	19/05/2017	18/05/2017	17/05/2017	16/05/2017	15/05/2017
Index Futures	-800	-2267	676	1156	665
Index Options	-920	-3126	1878	1118	1888
Stock Futures	-19663	9312	7271	7422	3191
Stock Options	-210	1030	215	408	443
F&O Total	-21593	4949	10040.81	10103.78	6187.12

Nifty Option Open Interest Statistics

NIFTY OPTIONS HIGHEST ADDITION IN OPEN INTEREST						
Expiry	Strike	Option Type	Settlement Price	Volume	Open Interest	Change In OI
25-May-17	9450	CE	44.4	108344	1710600	610875
25-May-17	9450	PE	48.35	114010	1219950	309075
29-Jun-17	9300	PE	73.1	26549	1780250	253275
27-Jul-17	8400	CE	1040.75	2679	351000	200925
25-May-17	9700	CE	1.3	121637	2166150	200325
25-May-17	9600	CE	6	358387	4934250	199800
25-May-17	8900	PE	1.85	27699	2856975	160125
25-May-17	9550	CE	12.55	151785	1862100	156000
29-Jun-17	9000	PE	25.5	18399	2332500	152700
29-Jun-17	9400	PE	103.5	28393	1335150	149025

NIFTY OPTIONS HIGHEST REDUCTION IN OPEN INTEREST						
Expiry	Strike	Option Type	Settlement Price	Volume	Open Interest	Change In OI
25-May-17	9500	PE	77.4	360148	2524725	-777900
25-May-17	9200	PE	6.85	238281	4025475	-489750
25-May-17	8700	PE	1.05	20282	1407900	-321900
25-May-17	9100	PE	3.75	104227	4043775	-258525
25-May-17	9400	CE	75.15	277624	3471150	-238950
25-May-17	8400	CE	1041.15	3193	449250	-226125
25-May-17	9300	PE	14.1	396385	6561825	-195450
25-May-17	9600	PE	155.55	45723	394200	-172125
25-May-17	9000	PE	2.4	56066	4556775	-171825
25-May-17	9200	CE	250.85	5408	596175	-114075

Stock Option Open Interest Statistics

STOCK OPTIONS WITH HIGHEST ADDITION IN OPEN INTEREST							
Symbol	Expiry	Strike	Option Type	Settl. Price	Volume	Open Interest	Change in OI
SUZLON	25-May-17	22.5	CE	0.55	3489	60150000	10620000
SUZLON	25-May-17	25	CE	0.2	1918	31500000	9990000
SUZLON	29-Jun-17	20	CE	2.25	196	6810000	3810000
SUZLON	25-May-17	20	PE	0.65	516	21270000	3000000
SBIN	25-May-17	320	CE	1.5	15388	7023000	2610000
PNB	25-May-17	145	PE	0.2	2284	3944500	2310000
SUZLON	29-Jun-17	25	CE	0.65	198	4080000	1920000
SBIN	25-May-17	300	PE	1.75	11764	4263000	1764000
SBIN	25-May-17	325	CE	0.75	4832	3246000	1740000
SUZLON	25-May-17	27.5	CE	0.1	117	4350000	1740000

STOCK OPTIONS WITH HIGHEST REDUCTION IN OPEN INTEREST							
Symbol	Expiry	Strike	Option Type	Settl. Price	Volume	Open Int.	Change in OI
JPASSOCIAT	25-May-17	15	CE	0.05	57	29172000	-2856000
VEDL	25-May-17	230	PE	2.8	3127	1564500	-1403500
SBIN	25-May-17	310	CE	4.5	20134	6597000	-1269000
JPASSOCIAT	25-May-17	12.5	PE	0.3	36	8160000	-1224000
SBIN	25-May-17	300	CE	10.7	4150	2454000	-1176000
SBIN	25-May-17	305	CE	7.2	6076	1440000	-1155000
PNB	25-May-17	150	PE	0.9	2776	2166500	-1137500
SOUTHBANK	25-May-17	25	CE	1.4	129	4275189	-994230
IFCI	25-May-17	30	PE	1.1	113	2794000	-946000
TV18BRDCST	25-May-17	42.5	CE	0.2	89	4743000	-935000

Research Team

Name	Designation	Email ID	Contact No.
Paras Bothra	President Equity Research	paras@ashikagroup.com	+91 22 6611 1704
Krishna Kumar Agarwal	Equity Research Analyst	krishna.a@ashikagroup.com	+91 33 4036 0646
Partha Mazumder	Equity Research Analyst	partha.m@ashikagroup.com	+91 33 4036 0647
Arijit Malakar	Equity Research Analyst	amalakar@ashikagroup.com	+91 33 4036 0644
Kapil Jagasia, CFA	Equity Research Analyst	kapil.j@ashikagroup.com	+91 22 6611 1715
Tirthankar Das	Technical & Derivative Analyst	tirthankar.d@ashikagroup.com	+91 33 4036 0645

Ashika Stock Broking Limited ("ASBL") or Research Entity has started its journey in the year 1994 and is engaged in the business of broking services, depository services, distributor of financial products (Mutual fund, IPO & Bonds). This research report has been prepared and distributed by ASBL in the sole capacity of a Research Analyst (Reg No. INH00000206) of SEBI (Research Analyst) Regulations 2014. ASBL is a wholly owned subsidiary of Ashika Global Securities (P) Ltd., a RBI registered non-deposit taking NBFC Company. Ashika group (details is enumerated on our website www.ashikagroup.com) is an integrated financial service provider inter alia engaged in the business of Investment Banking, Corporate Lending, Commodity Broking, Debt Syndication & Other Advisory Services.

There were no significant and material disciplinary actions against ASBL taken by any regulatory authority during last three years.

Disclosure

ASBL or its associates, its Research Analysts (including their relatives) may have financial interest in the subject company(ies). However, the said financial interest is not limited to having an open stock market position in /acting as advisor to /having a loan transaction with the subject company(ies) apart from registration as clients.

- ASBL or its Research Analysts (including their relatives) do not have any actual / beneficial ownership of 1% or more of securities of the subject company(ies) at the end of the month immediately preceding the date of publication of this report or date of the public appearance. However ASBL's associates may have actual / beneficial ownership of 1% or more of securities of the subject company(ies).
- ASBL or their Research Analysts (including their relatives) do not have any other material conflict of interest at the time of publication of this research report or date of the public appearance. However ASBL's associates might have an actual / potential conflict of interest (other than ownership).
- ASBL or its associates may have received compensation for investment banking, merchant banking, and brokerage services and for other products and services from the subject companies during the preceding 12 months. However, ASBL or its associates or its Research analysts (forming part of Research Desk) have not received any compensation or other benefits from the subject companies or third parties in connection with the research report. Moreover, Research Analysts have not received any compensation from the companies mentioned herein in the past twelve months.
- ASBL or their Research Analysts have not managed or co-managed public offering of securities for the subject company(ies) in the past twelve months. However ASBL's associates may have managed or co-managed public offering of securities for the subject company(ies) in the past twelve months.
- Research Analysts have not served as an officer, director or employee of the companies mentioned in the report.
- Neither ASBL nor its Research Analysts have been engaged in market making activity for the companies mentioned in the report.

Disclaimer

The research recommendation and information herein are solely for the personal information of the authorized recipient and does not construe to be an offer documents or any investment, legal or taxation advice or solicitation of any action based upon it. This report is not for public distribution or use by any person or entity, where such distribution, publication, availability or use would be contrary to law, regulation or subject to any registration or licensing requirement. We will not treat recipients as customer by virtue of their receiving this report. The report is based upon the information obtained from public sources that we consider reliable, but we do not guarantee its accuracy or completeness. ASBL shall not be in anyways responsible for any loss or damage that may arise to any such person from any inadvertent error in the information contained in this report. The recipients of this report should rely on their own investigations.