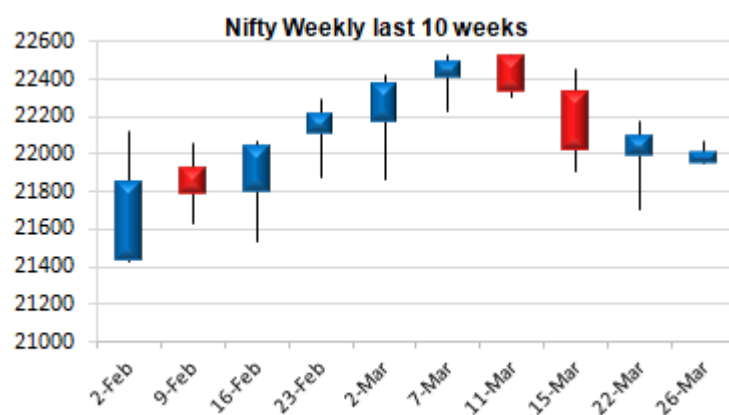
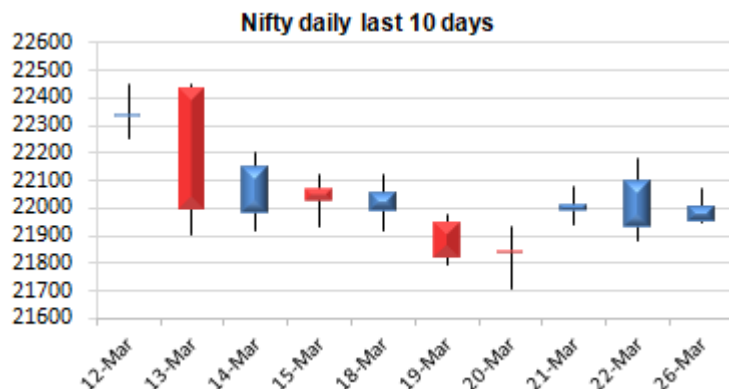


Date: 27<sup>th</sup> March 2024

\* Sensex 72470.30 - 361.64

\* Nifty 22004.75 - 92.05

\* Bank Nifty 46600.20 - 263.55



\*Blue candle → Close rate > Open rate \* Red candle → Close rate < Open rate

### Daily Trend turned Up

Scrip Name	LCP	Curr Trnd	Reversal
ALKEM	5002.15	-9	4841.9
ASTRAL	1992.9	-12	1951.25
AXISBANK	1040.55	-10	1039.05
COFORGE	5547.3	-1	5535.9
COLPAL	2745.5	-4	2721
HAVELLS	1487.55	-13	1483.05
MFSL	987.75	-9	952.4
ORACLEFIN	8764.3	-4	8547.5
PETRONET	265.55	-11	260.95
TATACOMM	1947.6	-10	1927.35
TORNTPHARM	2570.5	-11	2559.55
TVSMOTOR	2082.95	-9	2051.1

\* Trends turned Up after a significant period

### Market Preview

#### Nifty ends just above 22000 zone

Nifty after opening with a gap down on a weak note, remained rangebound for the rest part of the session resisting near 22070 levels to end in red just above the 22000 zone. BankNifty also slipped below the 46800 zone to remain stagnant near the 46600-46700 levels and closed near the 46600 zone losing 263 points. Sectorwise Realty, Metals and Infra were among the major gainers while Media, IT, Banking stocks and Financial Services were among the major laggards. The market breadth was slightly weak with the advance decline indicating a ratio of 2:3 at close.

### Market Forecast

#### Nifty daily range 21900-22200

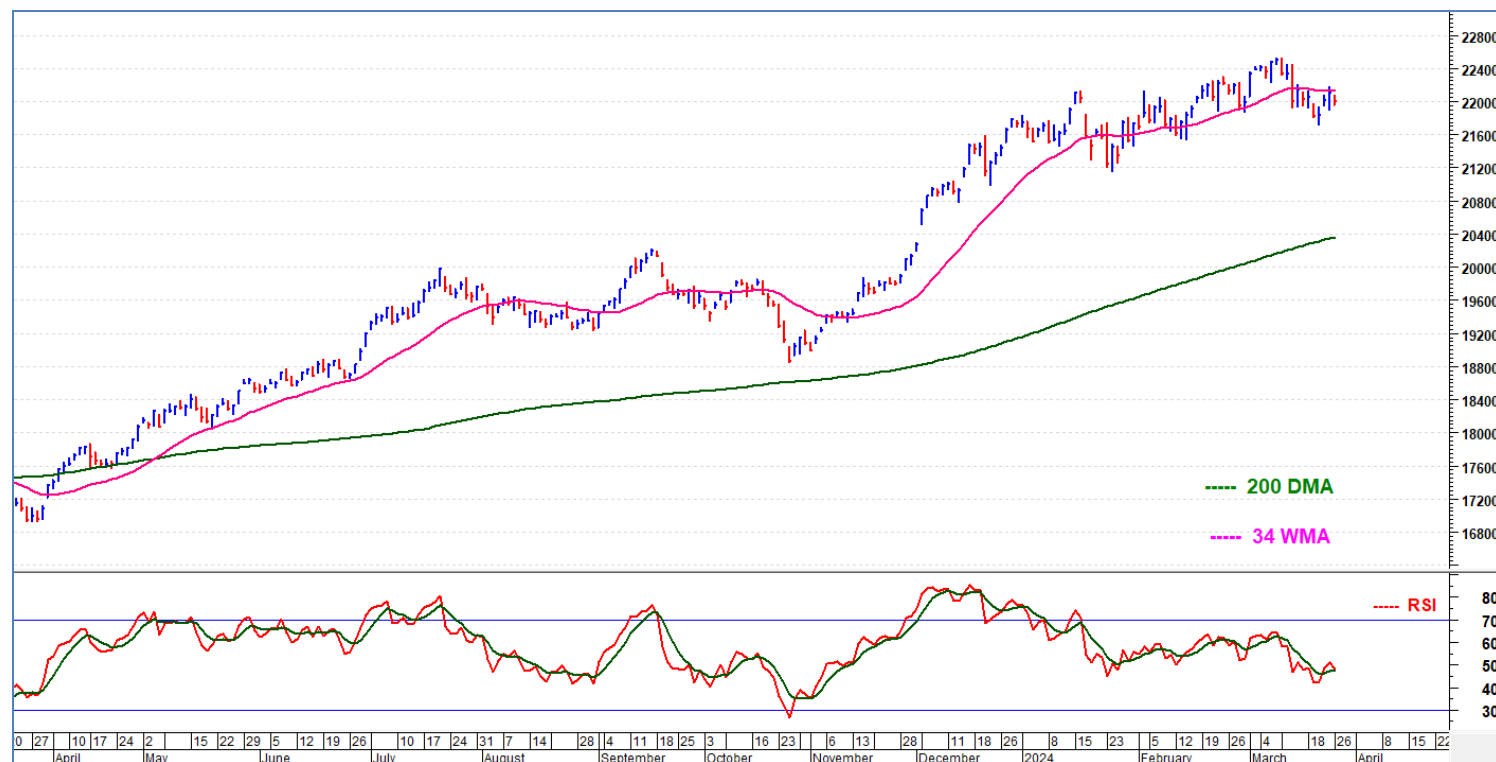
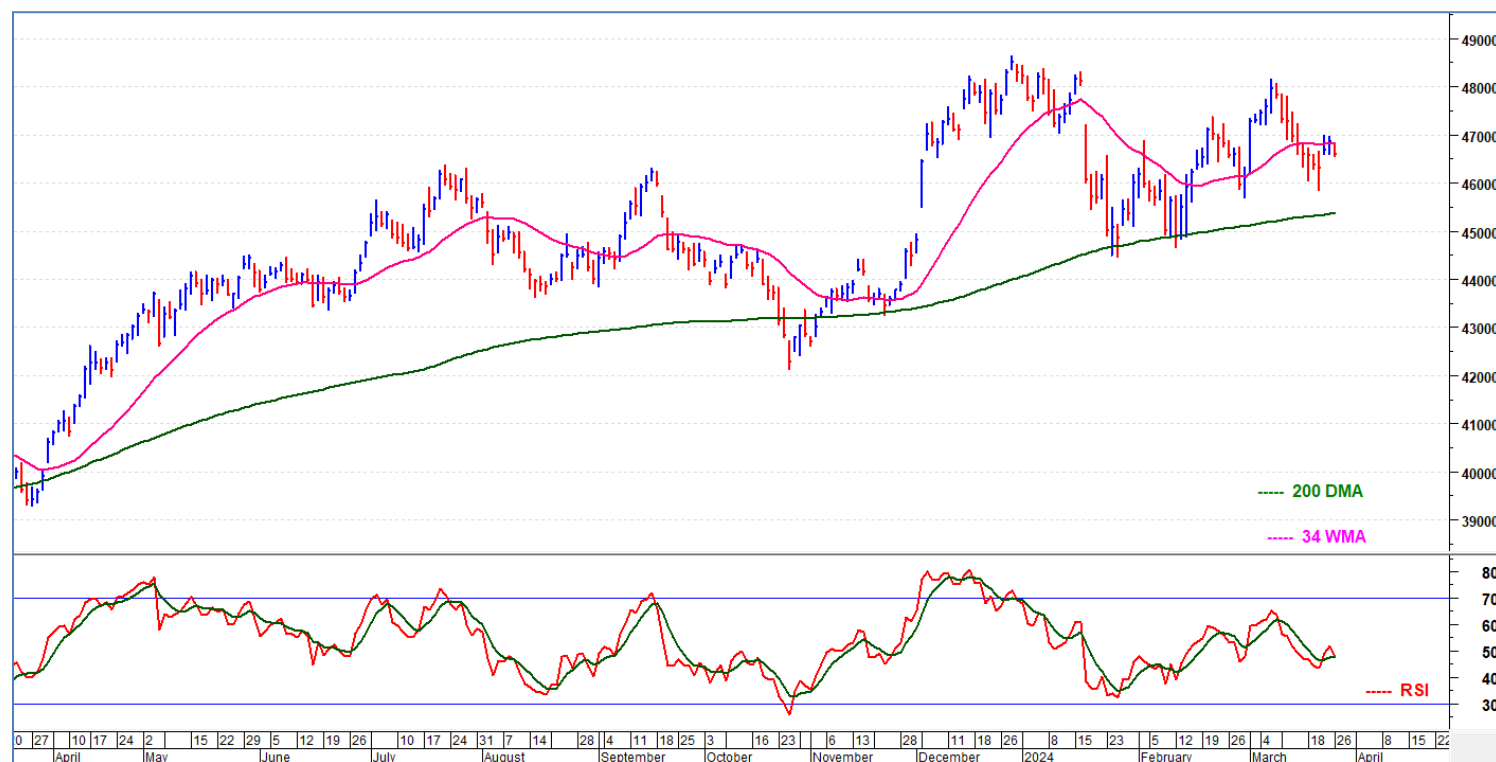
Nifty has been witnessing a rangebound movement since the last 3 sessions between 22180 and 21950 levels maintaining the significant 50EMA level of 21900 as the good support zone for the time being. The index has got the crucial support zone of 21700 levels while on the upside a decisive breach above 22300 levels is necessary to establish conviction for further rise. BankNifty is hovering near the important 50EMA level of 46600 and would need a decisive breach above the immediate resistance zone of 47000 levels to improve the bias with 46000 levels maintained as the significant near-term support levels. The support for the day is seen at 72000/21900 level while the resistance would be seen at 73200/22200 levels. BankNifty would have the daily range of 46200-47300 levels.

### Daily Trend turned Down

Scrip Name	LCP	Curr Trnd	Reversal
BALKRISIND	2266.4	4	2274.95
DCBBANK	118.65	6	119.2
DELTACORP	117.7	2	120.6
GLAXO	1921.5	5	1942.5
GODREJCP	1199.05	3	1221.45
HEIDELBERG	192.3	4	194.15
IBULHSGFIN	163.5	2	164.35
ICICIGI	1648.25	2	1663.85
KOTMAHBNK	1753.7	8	1759.9
TVTODAY	210.85	6	212.45
UBL	1712.9	3	1719.9
VRLLG	553.6	7	555.65

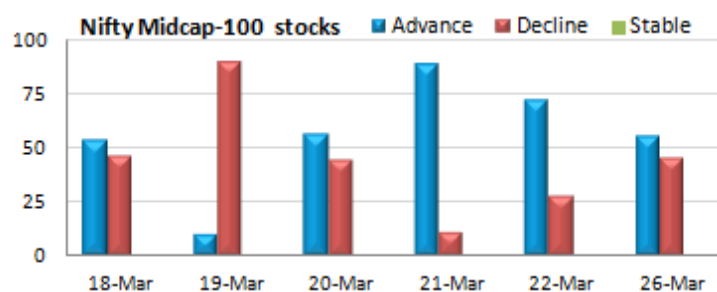
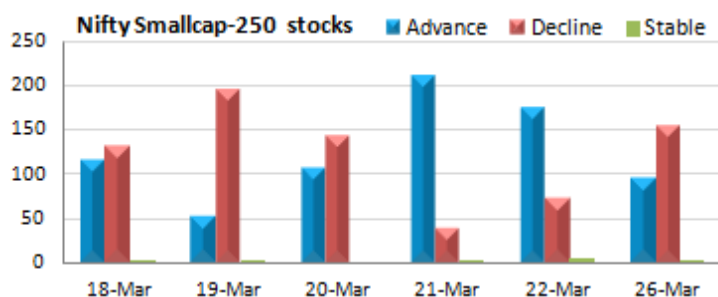
\* Trends turned Down after a significant period

Indices	Period	Closing	% Chng	Trend	Reversal	2 Sup	1 Sup	Pivot	1 Res	2 Res
Nifty	Daily	22004.70	-0.42%	3	21962.15	21883	21944	22008	22069	22134
	Weekly	22096.75	0.33%	-2	22584.90	21525	21811	21996	22282	22466
	Monthly	21982.80	1.18%	4	21410.90	21170	21576	21937	22343	22704
Bank Nifty	Daily	46600.20	-0.56%	3	46546.95	46380	46490	46639	46749	46898
	Weekly	46863.75	0.58%	-2	47052.45	45399	46132	46561	47293	47722
	Monthly	46120.90	0.27%	-2	46608.45	43310	44715	46039	47445	48769
Sensex	Daily	72470.30	-0.50%	-1	72448.30	72171	72320	72513	72663	72855
	Weekly	72831.94	0.26%	-2	74010.75	71099	71966	72541	73407	73982
	Monthly	72500.30	1.04%	4	71004.10	69637	71069	72241	73673	74845

**Nifty Daily chart with RSI indicator:****Banknifty Daily chart with RSI indicator:**

### Gainers - Losers (Nifty 500 stocks)

Gainers				Losers			
Scrip Name	LCP	% Change	Volume	Scrip Name	LCP	% Change	Volume
Apar Ind	7050.35	11.13	1059427	Tata Inv Corp	5663.5	-5	143249
Torrent Power	1405	9.45	4288729	SUMITOMO	349.2	-4.63	808655
Gujarat Pipavav	216.3	9.3	27926099	JBM Auto	1794.2	-4.05	335607
Finolex Cables	967.35	8.72	2155075	Laxmi Organic	236.5	-4.04	2563689
Triveni Turbine	537.6	7.02	4223835	Sterlite Techno	113.05	-4.03	4183625
Dr Lal PathLab	2267.5	6.52	1092495	Allcargo	69.7	-3.93	6286049
Interglobe Avi	3492.05	6.24	2463895	IIFL Finance	321.4	-3.84	3649120



### Breakouts - Cross above 200 DMA

Company Name	LCP	Change %	200 DMA
Flexituff Ventu	42.45	5.86	40.1
Greenlam Ind	511.9	4.17	491.41
Agri-Tech	180.05	2.66	175.38
V-Mart Retail	2078.35	2.52	2027.31
Esab India	5319.65	1.89	5220.79
Lumax Inds	2360	1.72	2320.09
EQUIPPP	29.75	1.5	29.31
HG Infra Engg	913.55	1.05	904.1
Panache Digilif	76.15	1.01	75.39
Home First	896.25	0.89	888.32
JITF Infralogis	515.4	0.53	512.7
Bajaj Finserv	1593.9	0.33	1588.7
Biocon	257.7	0.31	256.9
Raj Television	53.8	0.3	53.64
Sanofi India	7708.3	0.15	7696.42
Mrs. Bectors	1053.1	0.06	1052.45

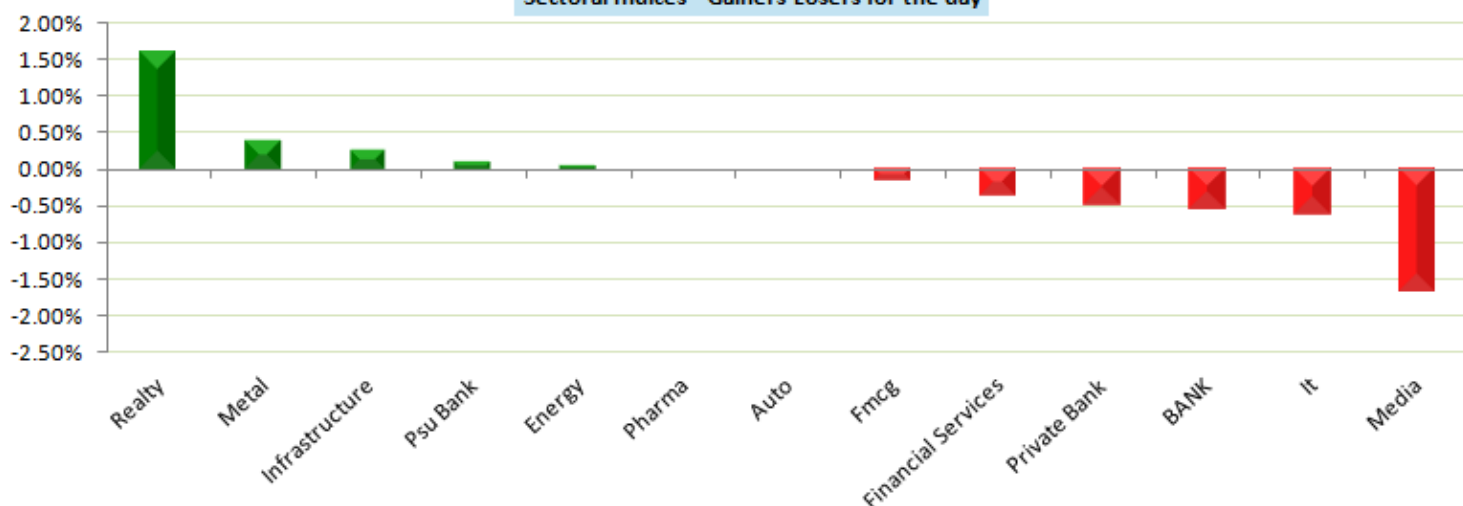
\* Stocks crossing above its Simple Moving Average (200DMA)

### Breakouts - Cross below 200 DMA

Company Name	LCP	Change %	200 DMA
Shiva Texyarn	138.05	-3.37	142.87
Renaissance	103.15	-3.37	106.75
SAB Events	4.95	-2.94	5.1
3i Infotech	40.5	-2.9	41.71
Suryalakshmi Co	66	-2.45	67.66
PDS	465.9	-2.31	476.92
JISL	30.2	-2.17	30.87
Cantabil Retail	218.95	-1.81	222.98
Poddar Pigments	344.6	-1.66	350.41
Jubilant Ing.	447.9	-1.64	455.36
5paisa Capita	477.05	-1.57	484.67
Spacenet Ent	25.6	-1.54	26
Rajshree Sugars	56.25	-1.45	57.08
Servotech Power	81.35	-1.45	82.55
Take Solutions	21.85	-1.35	22.15
HeidelbergCemen	194.4	-1.31	196.98

\* Stocks crossing below its Simple Moving Average (200DMA)

### Sectoral Indices - Gainers Losers for the day



Stocks witnessing a volume surge as compared to  
their 5 day average volume.

Volume Shockers - NSE					
Company name	LCP	% Chg	Volume	Avg Vol *	% Chg
Raj Rayon Ind	22.85	-1.72	403542	3460	11564
Mankind Pharma	2250.5	1.65	15639543	314068	4880
Flexituff Ventu	42.45	9.97	269944	13129	1956
Palash Securiti	122	1.2	77403	3964	1853
Savita Oil Tech	432.45	4.8	1615266	103655	1458
Globe Internati	47.45	-5.01	144000	10200	1312
Deep Ind	305.1	5.12	6035107	461513	1208
Industrial Inv	208.95	1.6	41882	3526	1088
Cineline India	132.8	9.93	389376	33300	1069
PVP Ventures	41.85	4.23	4688258	472918	891
Mohini Health &	52.25	-4.74	273000	27600	889
Apar Ind	7050.35	11.13	1059427	113678	832
Bhageria Indu	147.15	-3.38	472033	59871	688
Onelife Capital	25	19.9	2556688	334547	664
De Neers	225.7	-0.13	58200	7680	658
Universal Cable	444.95	5.93	133928	18419	627
Finolex Cables	967.35	8.72	2155075	304747	607
Control Print	976.55	4.49	100880	15038	571
HT Media	27.45	5.37	3164714	493832	541
Wise Travel	190.1	5.11	542000	87000	523

\* the Average Volume of last 5 days

Watch out for the stocks that have seen a huge spurt  
in its share price over the last three days

Price Shockers - NSE				
Company name	LCP	3 days *	% Chg	Volume
Onelife Capital	25	14.5	72.41	2556688
The Hi-Tech Gea	740.05	516.4	43.31	638818
Owais Metal and	448.55	320.6	39.91	164800
Skipper	316.55	239.95	31.92	5924617
Hindustan Media	110.55	87.95	25.7	457552
Sonu Infratech	61.65	49.1	25.56	27000
ABM Inter	65.75	52.8	24.53	9997
MRO-TEK	72.6	59.65	21.71	68363
Flexituff Ventu	42.45	34.9	21.63	269944
Maxposure	90.25	74.25	21.55	92000
Time Techno	250	207.1	20.71	8157854
eMudhra	740.15	616.75	20.01	1567311
Manoj Vaibhav G	275.45	230.9	19.29	279603
Arihant Academy	149	125.1	19.1	16000
Pearl Polymers	35.3	29.85	18.26	142306
Engineers India	206.25	174.45	18.23	19533953
Ausom Enterp	91.9	77.9	17.97	40182
Jyoti CNC Auto	729.1	619.15	17.76	1165735
Orient Bell	370.15	315.35	17.38	124013
Gravita India	924.85	789.05	17.21	212780

\* the % price rise of the last 3 days



## Nifty 50 stocks - Summary Details

Symbol	LTP	Chng	% Chng	Volume (lacs)	Turnover (crs.)	52w High	Diff with 52w H	52w Low	Diff with 52w L	365 days % chng	30 days % chng
NIFTY 50	22004.70	-92.05	-0.42%	3283.91	33380.66	22526.60	2.32%	17204.65	27.90%	-0.52%	30.40%
ADANIENT	3112.00	4.30	0.14%	9.37	293.33	3350.00	7.10%	1573.00	97.84%	-5.06%	78.54%
ADANIPTS	1305.00	23.40	1.83%	36.11	470.17	1356.55	3.80%	571.55	128.33%	-2.96%	100.88%
APOLLOHOSP	6325.00	-50.90	-0.80%	6.29	401.28	6874.45	7.99%	4168.00	51.75%	-5.88%	48.85%
ASIANPAINT	2817.50	-24.00	-0.84%	13.72	387.15	3568.00	21.03%	2708.65	4.02%	-4.84%	1.54%
AXISBANK	1043.00	9.70	0.94%	96.57	1001.85	1151.85	9.45%	826.05	26.26%	-5.79%	23.03%
BAJAJ-AUTO	8950.00	4.75	0.05%	5.34	478.30	9050.00	1.10%	3769.55	137.43%	6.02%	133.69%
BAJAJFINSV	1595.00	7.45	0.47%	16.16	259.38	1741.00	8.39%	1215.00	31.28%	-1.79%	27.96%
BAJFINANCE	6925.00	164.10	2.43%	18.50	1277.08	8192.00	15.47%	5522.70	25.39%	0.94%	19.68%
BHARTIARTL	1211.75	-24.35	-1.97%	108.98	1330.50	1245.00	2.67%	738.85	64.00%	9.80%	62.12%
BPCL	600.00	7.20	1.21%	67.83	405.32	687.95	12.78%	327.00	83.49%	-4.07%	71.63%
BRITANNIA	4950.80	85.80	1.76%	5.55	269.68	5386.05	8.08%	4153.00	19.21%	-1.45%	15.83%
CIPLA	1469.20	-12.05	-0.81%	16.36	240.78	1519.00	3.28%	861.25	70.59%	1.01%	68.85%
COALINDIA	435.75	3.80	0.88%	93.89	410.33	487.60	10.63%	207.60	109.90%	-2.69%	107.22%
DIVISLAB	3386.00	-45.45	-1.32%	4.78	162.32	4074.40	16.90%	2775.00	22.02%	-5.94%	22.25%
DRREDDY	6131.85	-71.35	-1.15%	2.72	167.72	6505.90	5.75%	4384.05	39.87%	-3.71%	38.96%
EICHERMOT	3919.20	-69.20	-1.74%	7.72	304.62	4200.00	6.69%	2836.00	38.19%	1.56%	37.08%
GRASIM	2237.55	14.00	0.63%	7.32	163.39	2270.55	1.45%	1585.20	41.15%	1.33%	39.47%
HCLTECH	1563.00	5.15	0.33%	44.96	703.09	1697.35	7.92%	1016.25	53.80%	-6.48%	48.12%
HDFCBANK	1424.90	-17.95	-1.24%	284.18	4064.47	1757.50	18.92%	1363.55	4.50%	1.57%	-7.55%
HDFCLIFE	627.50	3.65	0.59%	138.23	874.69	710.60	11.69%	481.60	30.29%	7.43%	26.73%
HEROMOTOCO	4673.95	-10.05	-0.21%	5.51	257.26	4949.05	5.56%	2246.00	108.10%	3.65%	102.48%
HINDALCO	559.90	12.15	2.22%	71.98	400.02	620.50	9.77%	386.00	45.05%	5.67%	41.03%
HINDUNILVR	2245.00	-11.55	-0.51%	30.27	678.98	2769.65	18.94%	2232.00	0.58%	-5.75%	-9.04%
ICICIBANK	1083.40	-6.90	-0.63%	133.67	1448.00	1113.55	2.71%	844.05	28.36%	2.73%	27.91%
INDUSINDBK	1520.00	7.90	0.52%	90.46	1372.24	1694.50	10.30%	1004.00	51.39%	2.15%	49.78%
INFY	1495.00	-13.85	-0.92%	83.51	1249.00	1733.00	13.73%	1185.30	26.13%	-10.02%	9.29%
ITC	428.00	-0.60	-0.14%	102.74	439.28	499.70	14.35%	374.40	14.32%	4.18%	13.18%
JSWSTEEL	822.60	-2.20	-0.27%	24.54	202.03	895.75	8.17%	655.75	25.44%	0.46%	25.39%
KOTAKBANK	1757.00	-19.40	-1.09%	53.03	935.19	2064.40	14.89%	1667.40	5.37%	3.04%	4.98%
LT	3670.00	52.20	1.44%	23.21	848.06	3737.90	1.82%	2121.00	73.03%	6.78%	67.02%
LTIM	4970.15	-34.85	-0.70%	3.88	193.70	6442.00	22.85%	4132.20	20.28%	-9.70%	8.77%
M&M	1868.00	-10.80	-0.57%	40.93	768.30	1982.30	5.77%	1123.40	66.28%	-2.65%	63.26%
MARUTI	12285.70	-52.00	-0.42%	5.08	621.57	12427.30	1.14%	8140.00	50.93%	6.95%	49.68%
NESTLEIND	2590.20	16.80	0.65%	9.71	250.80	2769.30	6.47%	1871.02	38.44%	-0.22%	-86.42%
NTPC	329.70	4.95	1.52%	112.09	367.00	359.95	8.40%	166.80	97.66%	-3.85%	88.04%
ONGC	265.25	2.00	0.76%	108.30	287.34	284.95	6.91%	146.50	81.06%	-3.29%	76.20%
POWERGRID	270.50	-5.25	-1.90%	284.75	769.04	298.90	9.50%	164.03	64.91%	-2.20%	23.99%
RELIANCE	2886.70	-23.35	-0.80%	57.08	1648.04	3024.90	4.57%	2198.00	31.33%	-2.58%	32.08%
SBILIFE	1489.45	-11.65	-0.78%	13.50	200.93	1569.40	5.09%	1083.25	37.50%	-1.83%	34.97%
SBIN	741.80	-4.90	-0.66%	146.78	1087.86	793.40	6.50%	501.55	47.90%	-1.63%	47.76%
SUNPHARMA	1602.00	-6.90	-0.43%	36.49	584.59	1627.00	1.54%	922.45	73.67%	3.05%	65.38%
TATACONSUM	1114.00	-8.75	-0.78%	24.07	268.10	1269.00	12.21%	690.00	61.45%	-3.24%	59.86%
TATAMOTORS	987.15	7.35	0.75%	94.61	935.22	1065.60	7.36%	400.45	146.51%	4.52%	135.25%
TATASTEEL	152.25	0.45	0.30%	529.62	805.24	159.15	4.34%	101.55	49.93%	4.37%	48.68%
TCS	3883.00	-27.90	-0.71%	34.41	1339.83	4254.75	8.74%	3070.25	26.47%	-3.48%	25.33%
TECHM	1255.00	-7.65	-0.61%	21.44	269.37	1416.30	11.39%	981.05	27.92%	-4.51%	14.58%
TITAN	3699.30	-7.40	-0.20%	11.58	428.65	3886.95	4.83%	2466.80	49.96%	0.40%	48.66%
ULTRACEMCO	9600.00	-81.75	-0.84%	3.98	382.13	10526.00	8.80%	7300.00	31.51%	-3.19%	30.73%
UPL	465.00	-5.00	-1.06%	50.72	236.65	759.95	38.81%	447.80	3.84%	-3.83%	-32.56%
WIPRO	479.90	-7.20	-1.48%	91.36	440.79	545.90	12.09%	352.00	36.34%	-9.15%	34.65%

Note: 52 week high & 52 week low prices are adjusted for Bonus, Split & Rights Corporate actions.

Color code for Stocks closer to 52-week high :

	- within 0% and 2%
	- within 2% and 5%
	- within 5% and 7%

Color code for Stocks closer to 52-week low :

	- within 0% and 2%
	- within 2% and 5%
	- within 5% and 7%

365 days % Change and 30 days % Change value are adjusted With respect to corporate actions

## Disclaimer / Disclosures:

### ANALYST CERTIFICATION

I, Mrs. Vaishali Parekh B.com, Research Analyst, author and the name subscribed to this report, hereby certify that all of the views expressed in this research report accurately reflect our views about the subject issuer(s) or securities. We also certify that no part of our compensation was, is, or will be directly or indirectly related to the specific recommendation(s) or view(s) in this report.

Terms & conditions and other disclosures:

Prabhudas Lilladher Pvt. Ltd, Mumbai, India (hereinafter referred to as "PL") is engaged in the business of Stock Broking, Portfolio Manager, Depository Participant and distribution for third party financial products. PL is a subsidiary of Prabhudas Lilladher Advisory Services Pvt Ltd. which has its various subsidiaries engaged in business of commodity broking, investment banking, financial services (margin funding) and distribution of third party financial/other products, details in respect of which are available at [www.plindia.com](http://www.plindia.com)

This document has been prepared by the Research Division of PL and is meant for use by the recipient only as information and is not for circulation. This document is not to be reported or copied or made available to others without prior permission of PL. It should not be considered or taken as an offer to sell or a solicitation to buy or sell any security.

The information contained in this report has been obtained from sources that are considered to be reliable. However, PL has not independently verified the accuracy or completeness of the same. Neither PL nor any of its affiliates, its directors or its employees accepts any responsibility of whatsoever nature for the information, statements and opinion given, made available or expressed herein or for any omission therein.

Recipients of this report should be aware that past performance is not necessarily a guide to future performance and value of investments can go down as well. The suitability or otherwise of any investments will depend upon the recipient's particular circumstances and, in case of doubt, advice should be sought from an independent expert/advisor.

Either PL or its affiliates or its directors or its employees or its representatives or its clients or their relatives may have position(s), make market, act as principal or engage in transactions of securities of companies referred to in this report and they may have used the research material prior to publication.

PL may from time to time solicit or perform investment banking or other services for any company mentioned in this document.

PL is registered as Research Analyst under Securities and Exchange Board of India (Research Analysts) Regulations, 2014 PL submits that no material disciplinary action has been taken on us by any Regulatory Authority impacting Equity Research Analysis activities.

PL or its research analysts or its associates or his relatives do not have any financial interest in the subject company.

PL or its research analysts or its associates or his relatives do not have actual/beneficial ownership of one per cent or more securities of the subject company at the end of the month immediately preceding the date of publication of the research report.

PL or its research analysts or its associates or his relatives do not have any material conflict of interest at the time of publication of the research report.

PL or its associates might have received compensation from the subject company in the past twelve months.

PL or its associates might have managed or co-managed public offering of securities for the subject company in the past twelve months or mandated by the subject company for any other assignment in the past twelve months.

PL or its associates might have received any compensation for investment banking or merchant banking or brokerage services from the subject company in the past twelve months.

PL or its associates might have received any compensation for products or services other than investment banking or merchant banking or brokerage services from the subject company in the past twelve months PL or its associates might have received any compensation or other benefits from the subject company or third party in connection with the research report.

PL encourages independence in research report preparation and strives to minimize conflict in preparation of research report. PL or its analysts did not receive any compensation or other benefits from the subject Company or third party in connection with the preparation of the research report. PL or its Research Analysts do not have any material conflict of interest at the time of publication of this report.

It is confirmed that Mrs. Vaishali Parekh B.com, Research Analyst of this report has not received any compensation from the companies mentioned in the report in the preceding twelve months compensation of our Research Analysts is not based on any specific merchant banking, investment banking or brokerage service transactions.

The Research analysts for this report certifies that all of the views expressed in this report accurately reflect his or her personal views about the subject company or companies and its or their securities, and no part of his or her compensation was, is or will be, directly or indirectly related to specific recommendations or views expressed in this report.

The research analysts for this report has not served as an officer, director or employee of the subject company PL or its research analysts have not engaged in market making activity for the subject company

Our sales people, traders, and other professionals or affiliates may provide oral or written market commentary or trading strategies to our clients that reflect opinions that are contrary to the opinions expressed herein, and our proprietary trading and investing businesses may make investment decisions that are inconsistent with the recommendations expressed herein. In reviewing these materials, you should be aware that any or all of the foregoing, among other things, may give rise to real or potential conflicts of interest.

PL and its associates, their directors and employees may (a) from time to time, have a long or short position in, and buy or sell the securities of the subject company or (b) be engaged in any other transaction involving such securities and earn brokerage or other compensation or act as a market maker in the financial instruments of the subject company or act as an advisor or lender/borrower to the subject company or may have any other potential conflict of interests with respect to any recommendation and other related information and opinions.